

IT'S YOUR BUSINESS

www.centralpachamber.com

Volume 9, Issue 2 - February 2024

In the News and Making Headlines, pg. 3



Be my
CENTRAL PA
CHAMBER OF COMMERCE

Remembering Jim King,
2024 Legislative Events, pg. 10
pg. 15



The Inside Scoop

Welcome to our February issue of IYB!



You'll find a lot of LOVE in this issue, to and from your Chamber! First, check out the 2024 President's Club members listed below. Thank you to this elite group of Central PA Chamber supporters who go above and beyond to help us achieve our mission and vision. 2024 has been off to a roller coaster start and it doesn't appear to be letting up anytime soon!

Next, you'll see the Central PA Chamber and our President & CEO, Tea Jay Aikey, have been honored with several distinctions from *Pennsylvania Business Central* and the State Treasury. We are a small team but we work hard on behalf of all our members. Getting recognized for our efforts isn't our priority—YOU are, but it is certainly a pleasant surprise to find our efforts aren't going unnoticed.

Tea Jay pays special tribute to a long-time friend of the Chamber and beloved figure in the community, Jim King. Regrettably, my tenure at the Chamber began at about the precise time Jim stepped back from volunteering, but I did have the opportunity to meet him once during an Inside Jobs Tour. I'm sure I'm not the only one who could say meeting Mr. King, even once, left a lasting impression!

You'll notice Jessica wants you to know all about our Legislative Events. Each of the quarterly breakfasts at the Watson Inn, keynote speaker, and sponsor have already been booked for 2024. We hope you'll join us welcoming both new and longtime friends of the Central PA Chamber for these well-attended events.

Finally, I'd like to thank you for the great privilege you have granted me as I transition from interim to full-fledged Comms Director. It is my pleasure to serve you! As always, thanks for reading!



Ryan Workman, Editor
Communications Director
workman@centralpachamber.com

Board of Directors

- | | |
|---|---|
| Genie Bausinger
Milton Regional Sewer Authority | Lauren McDonald
The Wealth Factory |
| Jeff Comitz
Thermal Product Solutions | Ashley Parrish
First Commonwealth Bank |
| Will Greiner
Great Dane | Michael Porter
Pennsylvania College of Technology |
| Rachael Herb
Service 1st Federal Credit Union | Brandon Schemery
Casale, Bonner, Hillman & Southard |
| Rob Jones
Milton Historical Society | Stephen Shope
Pennsylvania Treasury |
| Nathan Lawrence
United Plate Glass | Paul Smith
Sync Solutions |
| Noelle Long
SEDA Council of Governments | Tina Welch
Welch Performance Consulting |
| Sheri Marshall
Edward Jones | E. Terry Baldwin - Solicitor
Baldwin & Baldwin |

Staff

- Tea Jay Aikey - President & CEO**
tjaikey@centralpachamber.com
- Jessica Beaver - Finance & Membership Director**
jbeaver@centralpachamber.com
- Ryan Workman - Communications Director**
rworkman@centralpachamber.com

The President's Club

Thank you, 2024 Members! (Committed as of publishing.)

- | | | |
|--------------------------------|----------------------------------|----------------------------------|
| Abe's Cusom Woodworking | Jersey Shore State Bank | Service 1st Federal Credit Union |
| Asbury RiverWoods | Keystone Advertising | Service Electric Cablevision |
| Backyard Broadcasting | Lawton Insurance Agency | The Standard Journal |
| Decal Dynasty | LIVIC Civil | Sunbury Broadcasting Corp. |
| Endless Mountain Enterprises | MC Federal Credit Union | Susquehanna Fire Protection Co. |
| Evangelical Community Hospital | Meixell-Diehl Insurance | Susquehanna Valley Limousine |
| First Commonwealth Bank | Mifflinburg Bank & Trust Company | Sync Solutions |
| Fulton Bank | Near Me Entertainment | T-Ross Brothers Construction |
| Heaven's Best Carpet Cleaning | North Central Sight Services | United Plate Glass |
| Hosterman Photography & Design | North Shore Railroad Company | UPMC |
| Hot Frog Media | Pennsylvania American Water | The UPS Store |
| i3 Point-of-Sale | PenTeleData | USA Life Company |
| iHeart Media | PPL Electric Utilities | Vendetta Cyber Defense |
| Intrada Technologies | RHP Law Firm | |
| | Riverfront Financial Services | |

The President's Club is an exclusive sponsorship program created to prominently recognize members that contribute to the Central PA Chamber over and above their annual membership investment. Learn more at centralpachamber.com/tpc.

IYB Deadlines

Below are upcoming *It's Your Business* due dates. Every effort is made to include information in a timely manner.
Note: Only paid advertisements are guaranteed.

March Digital Issue News & Ads
due by Feb. 16

Spring Print Issue*
(released early April)
Ads & Flyers
due by March 8

April Digital Issue News & Ads
due by March 15

*The Central PA Chamber also publishes *IYB Quarterly* four times a year. Copies are available at public member locations across the region.



Chamber Recognized

Tea Jay Aikey
President & CEO



MILTON – The Central PA Chamber of Commerce has been selected as one of the “Top 100 Organizations” in Pennsylvania by the *Pennsylvania Business Central*, one of the most circulated, business-focused publications in the Commonwealth. “This recognition reaches 40,000 readers across a 23-county area in central Pennsylvania. Each year the editorial board reaches out to executives, chambers of commerce, community leaders, and readers to send in nominations for selection.” We are honored by this nomination and selection.

Central PA Chamber President & CEO, Tea Jay Aikey, was also selected as one of the *Pennsylvania Business Central’s* “Top 100 People.” According to the publication, “The vibrant economic and social life of central Pennsylvania is powered by people. When goods or services are delivered in an efficient and timely manner, expertise and knowledge brought to bear on a problem, or necessary care provided, it’s not just the businesses and the institutions – but the people behind them that get the job done. We all know that powerhouse individual – the person with the vision, dedication and drive to not only complete the task, but to envision, expand, and excel. We are fascinated by the impact a single individual can have on their workplace, their community and the lives of those around them. The stories of these individuals can provide instruction, inspiration, and the motivation to raise our own standard of excellence.”

During the tenure of Aikey, the Central PA Chamber has grown its membership and influence. We now have well over 600 members in multiple states and over 90 zip codes. Our programs reach thousands of individuals throughout the year and we are constantly finding new and more efficient ways to serve our members under her guidance. The business community appreciates Aikey’s wealth of knowledge and experience and she is often requested to be the master of ceremonies or keynote speaker at public events.

In addition to this distinction, Aikey has been appointed to the Advisory Council of the Pennsylvania Treasury’s *Prosperous Communities Initiative* for a two-year term. Aikey’s expertise in business and industry will be sought for actionable input as the Pennsylvania Treasury continually develops the messaging and methods necessary to drive consumer programming outreach.

CENTRAL PA Board Retreat

CHAMBER OF COMMERCE

The newly elected board of directors met for the first time in January. Following the regularly scheduled, monthly meeting, the directors and staff met in the Smith Training Room for a 'board retreat' including snacks and a 'Did You Know?' game show. The full board divided and competed against each other as two teams, Tea Jay asked questions, and Ryan and Jessica kept score. The final tally was very close, but ultimately the team, pictured below, came out on top.



Find New Members & Membership Renewals starting on page 8.



Joshua Hottenstein,
Physician & Owner
570-908-4053

joshua@eulistichealth.com,
www.eulistichealth.com
130 Buffalo Rd, Suite 207, Lewisburg, PA

How long has your business/organization existed?

Since November 2023.

What makes your business/organization unique in your industry (i.e. a service people wouldn't think you provide)?

Direct Primary Care—Low cost monthly membership provides unlimited primary care, urgent care, and Integrative Medicine for people age birth to 64. Personalized, caring, responsive.

Why are you a member of the Central PA Chamber of Commerce?

To give me the opportunity to meet neighbors in the local community.

What benefit/opportunity from your Chamber membership do you utilize or want to utilize?

Inside Jobs tour, advertising.



Aaron Barth,
Executive Director
570-522-6230

jeister-whitaker@asbury.org
www.riverwoods.org
270 RidgeCrest Circle Lewisburg, PA



How long has your business/organization existed?

In 1916, area church leaders established the United Evangelical Home now comprise RiverWoods continuing care retirement community and has been serving our community for more than 100yrs.

What makes your business/organization unique in your industry (i.e., a service people wouldn't think you provide)?

Not-for-profit United Methodist Affiliation senior living organization -Benevolent Care Agency. Leading Wellbeing program offering Brain Health services.

Why are you a member of the Central PA Chamber of Commerce?

We value the two-way opportunity to both engage with other companies and give back to the community at large.

What benefit/opportunity from your Chamber membership do you utilize or want to utilize?

Training opportunities for staff, workshops, informative seminars. As well as building relationships within the community.



Want to appear in the Member Spotlight?
E-mail Jessica Beaver:
ibeaver@centralpachamber.com



David Snyder,
Owner
570-259-2925

drinkwine@ironvineswinery.com
www.ironvineswinery.com
322 Raspberry Ave. Sunbury, PA

How long has your business/organization existed?

5 years

What makes your business/organization unique in your industry (i.e. a service people wouldn't think you provide)?

We have music Friday, Saturday and Sunday.

Why are you a member of the Central PA Chamber of Commerce?

Exposure, benefits, networking

What benefit/opportunity from your Chamber membership do you utilize or want to utilize? We will be participating in the inside job tours in March.



10 a.m. to 12 p.m. Wednesday, Mar. 27
@ 322 Raspberry Avenue, Sunbury

- A behind-the-scenes tour of the facility
- Testing & snacks provided
- Must be 21 to participate



Inside Jobs offers members a chance to tour facilities of fellow businesses/organizations. Learn more and register by March 20 @ www.centralpachamber.com/inside-jobs-tours

What's Happening



Community Health and Wellness and Mobile Health Screenings for February

LEWISBURG - Community Health and Wellness at Evangelical Community Hospital will hold a series of screenings through the month of February.

Skin Cancer Screen: Tuesday, February 6, 8:45-11:15 am, at Surgical Specialists of Evangelical, 25 Lystra Rogers Drive, Lewisburg. This free screening, with Daria Keyser, DO, helps individuals recognize their own pattern of moles, freckles, and "beauty marks." By being familiar with what is considered normal allows people to be more alert to changes in the number, size, shape, and color of pigmented areas that may be of concern. This is a comprehensive, full body screen. Appointments required. Call 570-768-3200.

Free Varicose and Spider Vein Screen: Monday, February 12, 8-11 am, at the Heart and Vascular Center of Evangelical. This screening, with Rachel Carr, PA-C, MPAS, includes free examination of varicose and/or spider veins, and an overview of treatment options. Appointments required. Call 570-768-3200.

Skin Cancer Screen: Tuesday, February 13, 8:45-11:15 am, at Surgical Specialists of Evangelical, 25 Lystra Rogers Drive, Lewisburg. This free screening, with Daria Keyser, DO, helps individuals recognize their own pattern of moles, freckles, and "beauty marks." By being familiar with what is considered normal allows people to be more alert to changes in the number, size, shape, and color of pigmented areas that may be of concern. This is a comprehensive, full body screen. Appointments required. Call 570-768-3200.

Healthy Heart Screen: Wednesday, February 14, 6:30-10 am, at The Miller Center, 120 Hardwood Drive, Lewisburg. This free screening assists in the detection and prevention of heart-related issues. The screenings include lipid panel (good, bad, and total cholesterol levels, triglycerides), blood sugar, blood pressure, and body composition. A 12-hour fast is required prior to your appointment. Appointments required. Call 570-768-3200.

Comprehensive Blood Screen: Thursday, February 22, 6:30-10 am, at The Miller Center, 120 Hardwood Drive, Lewisburg. A low-cost comprehensive blood screening can provide important details about your health, sometimes before symptoms of a condition surface, giving you and your physicians the power to plan ahead. \$55 fee includes lipid panel (HDL, LDL, total cholesterol, and triglycerides), complete blood count, and CMP (blood sugar, electrolytes, calcium, protein, liver enzymes etc.). Appointments required. Call 570-768-3200.



Community Health and Wellness and Mobile Health Screenings for February

Free Varicose and Spider Vein Screen: Friday, February 23, 1-3 pm, at the Williamsport Specialty Clinic of Evangelical, 457 River Avenue, Williamsport. This screening, with Rachel Carr, PA-C, MPAS, includes free examination of varicose and/or spider veins, and an overview of treatment options. Appointments required. Call 570-768-3200.

Blood Pressure Screenings:
 Tuesday, February 6, 10-11:30 am, Sunbury YMCA
 Wednesday, February 21, 9-10:30 am, Lewisburg YMCA, The Miller Center
 Tuesday, February 27, 10-11:30 am, Milton YMCA
 By appointment at Community Health and Wellness. Call 570-768-3200.

Blood Sugar Screenings:
 Tuesday, February 6, 10-11:30 am, Sunbury YMCA
 Wednesday, February 21, 9-10:30 am, Lewisburg YMCA, The Miller Center
 Tuesday, February 27, 10-11:30 am, Milton YMCA
 By appointment at Community Health and Wellness. Call 570-768-3200.

Evangelical Community Health and Wellness is located at The Miller Center, 120 Hardwood Drive, Lewisburg. To register for screenings that require appointments, please call 570-768-3200 or visit www.EvanHospital.com.

Mobile Health of Evangelical

Mobile Health of Evangelical delivers preventive health services directly into the communities surrounding the Hospital and beyond. A variety of services are offered on the 38-foot-bus throughout the area. To find out more about the services available through Mobile Health of Evangelical and where the bus will be stopping, call 1-833-251-0187 or visit www.EvanHospital.com/MobileHealth.

More information can be found at www.EvanHospital.com.

Send your event info to: rworkman@centralpachamber.com!

Evangelical Community Hospital Schedules February Support Groups

LEWISBURG-Evangelical Community Hospital has scheduled its roster of support groups for the month of February.

Bariatric: Wednesday, February 7, 6-7 pm. This month's topic: Increase Muscle Mass to Support Your Metabolism. Participants should meet at Surgical Specialists of Evangelical Lobby, 25 Lystra Rogers Drive, Lewisburg.
Empty Arms: Monday, February 12, 6:30-8:30 pm, St John's United Church of Christ, 1050 Buffalo Rd., Lewisburg. This support group is for individuals following the loss of a baby. For more information or to register, call 570-522-2378. For more information on any of these support groups, please call Community Health and Wellness at 570-768-3200 or visit www.EvanHospital.com.

Lewisburg Arts Council

LEWISBURG – The Lewisburg Arts Council invites the public to join in celebrating its tenth annual Members' Show at the Public Library for Union County, 255 Reitz Blvd., Lewisburg, The show opens Friday, February 2, and closes Wednesday, February 28.



Artwork will be displayed in the library's "Gallery 255" and can be viewed during regular hours: M, T, Th 9:30 am to 8:30 pm and W, F, Sat 9:30 am to 5:00 pm. The show's Opening Reception will be held Thursday, February 8, from 5:30 to 7:30 pm. Light refreshments will be served in the library's Community Room.

During the reception, meet other area creatives who share your interests, hear news about the Arts Council's exciting plans for the coming year, and learn how you can get involved in bringing the arts to our community.

At 6:00 pm, Arts Council President Della Hutchison will have a very special announcement about the Featured Artist for our upcoming annual Lewisburg Festival Arts.

Come celebrate the many artists and volunteers who have contributed to the show and helped it grow over the past ten years.

And, on Tuesdays in February, stop by the library's lobby between 11 am and 1 pm, when representatives will be available to engage with visitors and answer questions about the artwork, the Lewisburg Arts Council, the Photography Club, and the Artists' Guild.

You don't have to be an artist yourself – or even an Arts Council member – to attend!



Lewisburg Downtown Partnership

LEWISBURG – As winter wraps its icy embrace around Lewisburg, the Heart of Lewisburg Ice Festival is set to transform the charming town into a glittering winter wonderland from February 2nd to 4th. This weekend promises an enchanting blend of frozen artistry, activities for all ages, and community spirit that is not to be missed.

Frosty festivities commence on Friday morning with the unveiling of one-block ice sculptures up and down Market Street. Starting at 10 am, live carving sessions will treat on-lookers to the captivating transformation of blocks of ice into intricate masterpieces, creating a visual spectacle for all.

As the evening approaches on Friday, the town comes alive with the 2nd Annual Sip and Stroll, generously sponsored by the Susquehanna River Valley Visitors Bureau. The Sip and Stroll will take place between 4pm and 7pm with a little extra incentive to check in a little early between 2pm and 4pm.

This year's Sip and Stroll has doubled in size, featuring 10 stops for participants to enjoy. Meander through downtown Lewisburg, a little sipping, a little shopping, meeting up with friends, and commemorating the experience with your exclusive insulated wine cup in hand.

Tickets are on sale and can be purchased by going to lewisburgpa.com. There are a limited number of tickets available so grab them while you can. You may also stop into our offices at 328 Market Street between the hours of 10am and 12pm Monday through Friday to purchase tickets in person via cash or check. Please have your ID available.

Think ahead and make your dinner reservations now at your favorite Lewisburg restaurant for Friday, February 2nd, because downtown will be packed after the Sip and Stroll.

The Heart of Lewisburg Ice Festival is more than an event; it's a celebration of the resilience and vibrancy of the community. Come, join the festivities, and experience the heart-warming spirit that defines Lewisburg in winter.

For more information go to www.lewisburgpa.com and follow the link to the Heart of Lewisburg Ice Festival landing page (<https://www.lewisburgpa.com/ice-festival-2024>).

Date	Event	Location	Time	Cost
2/15/24	Cybersecurity Essentials: Toolkit for Small Business	Webinar	2 to 3:00 p.m.	Free
3/12/24	Supply Chain Management	Penn College Earth Scienc Center, 203 Allenwood Camp Lane, Montgomery	10 to 11:00 a.m.	Free
3/21/24	Problem Solving with Root Cause Analysis	Penn College Dept. 32 1 College Avenue, Williamsport	8:30 to 11:30 a.m.	\$189.00

Lauri Moon
Manager, Outreach & Special Projects
570-329-3200

www.imcpa.com/events

New Members

Ignite Business Services Inc.

329 Pine Street Suite 300

Williamsport, PA 17701

570-212-9558

anne@ignitepa.com

Anne Reiner - CO-CEO

www.facebook.com/ignitebusinessservicesinc

Ignite Business Services enhances the work of small business owners by providing valuable support in the form of marketing, video production, branding, website design and much more. If you feel overwhelmed by a day full of the busy administrative tasks, our team is here to help you focus on why you started your business in the first place.

Deer View Homes LLC

2625 Continental Boulevard

Turbotville, PA 17772

570-279-0522

deerviewhomes@gmail.com

Cortney Shupp - Office Manager

www.deerviewhomes.com

Custom Modular Home Dealer / General Construction.

Journey Bank - Avis

2 West Central Avenue

Avis, PA 17721

570-753-5155

Journey Bank - Benton

200 Market Street

Benton, PA 17814

570-925-6181

Journey Bank - Bloomsburg Main Office

232 East Street

Bloomsburg, PA 17815

570-784-1660

Journey Bank - Buckhorn

279 Columbia Mall Drive

Bloomsburg, PA 17815

570-387-3264

Journey Bank - Catawissa

347 Main Street

Catawissa, PA 17820

570-356-2842

Journey Bank - Clarkstown

2175 State Route 442

Muncy, PA 17756

570-546-2218

Journey Bank - Danville

710 Walnut Street

Danville, PA 17821

570-275-1406

Journey Bank - Dewart

48880 State Route 44

Dewart, PA 17730

570-538-2200

Journey Bank - Elysburg

119 Northumberland Drive

Elysburg, PA 17824

570-672-1503

Journey Bank - Front Street Berwick

1919 West Front Street

Berwick, PA 18603

570-752-3230

Journey Bank - Hughesville

725 State Route 405

Hughesville, PA 17737

570-584-5171

Journey Bank - Light Street Bloomsburg

1199 Lightstreet Road

Bloomsburg, PA 17815

570-387-3452

Journey Bank - Linden

7520 South Route 220

Linden, PA 17744

570-398-1234

Journey Bank - Main Street Muncy

319 South Main Street

Muncy, PA 17756

570-794-1660

Journey Bank - Market Street Berwick

300 Market Street

Berwick, PA 18603

570-752-8028

Journey Bank - Market Street Bloomsburg

1010 South Market Street

Bloomsburg, PA 17815

570-925-5467

Journey Bank - Millville

125 South State Street

Millville, PA 17846

570-458-5650

Have You Applied?



New Members (cont.)

Journey Bank - Montgomery
2190 State Route 54
Montgomery, PA 17752
570-547-0123

Journey Bank - Montoursville
900 Loyalsock Avenue
Montoursville, PA 17754
570-368-1234

Journey Bank - Muncy
2 North Main Street
Muncy, PA 17756
570-546-2211

Journey Bank - Scott Township Bloomsburg
2691 Columbia Boulevard
Bloomsburg, PA 17815
570-387-4689

Journey Bank - South Williamsport
201 South Market Street
South Williamsport, PA 17702
570-365-8522

Imoore@journeybank.com
Lesley Moore - Community Office Manager
www.journeybank.com

Journey Bank offers a full range of banking and financial services to individuals and businesses across five counties and the surrounding area. Product offering includes checking accounts, savings accounts, certificates of deposit, money market accounts, and personal, mortgage, commercial and installment loans. The Bank also maintains a Trust Division that provides full fiduciary services and an Investment Center that provides financial products and investment services for individuals and businesses. The locally owned and managed bank operates 22 branch offices in the communities of Avis, Benton, Berwick, Bloomsburg, Buckhorn, Catawissa, Clarkstown, Danville, Dewart, Elysburg, Hughesville, Lightstreet, Linden, Millville, Montgomery, Montoursville, Muncy, Scott Township and South Williamsport.

Membership Renewals

(As of Jan. 30, 2024)

Dwell Orphan Care - Lycoming County
Dwell Orphan Care - Columbia County
Budman Auto Body
Wilkes-Barre/Scranton International Airport
North Eastern PA American Red Cross Blood Services
Lewisburg YMCA at the Miller Center
Paige Electrical Services
Timberhaven Log & Timber Homes
Turbotville National Bank
Standard Journal
T-Ross Brothers Construction, Inc.
Ross Custom Homes
Bend-Fab
Reliable Glass Construction
GKN Hoeganaes Corp.
One Group Insurance
Reichard, Jr. K.Barton
Pinpoint Federal Credit Union
Aspire Wealth Group
Welch Performance Consulting
State Representative Joe Hamm - 84th District
Specialty Settlement Services
Megan Dugan - State Farm Insurance
Davis Davis and Kaar
Herring, Roll & Solomon P.C. - Sunbury
Herring, Roll & Solomon P.C. - Danville
Milton Steel Company
Thriv, LLC
Brynwood Rentals - 535, Inc.
Middle Creek Signs Inc.
Union County Historical Society
Central Builders Supply Company
Warrior Run Petcare Center
Matt Frye - State Farm Insurance
Rotary Club of Milton
Bucky Allis
Wyrope Williamsport Federal Credit Union
Chickadee eMarketing
SEDA-Council of Governments (SEDA-COG)
Innovative Manufacturer's Center (IMC)
River Valley Builders LLC
Larson Design Group, Inc. - Williamsport
Larson Design Group, Inc. - Selinsgrove
Meadowbrook Christian School
Union County Housing Authority
Unbound Physical Therapy LLC
Karen Baker
Photography by David Miller
Joseph S. Kowalski
Warehouse Battery Outlet
Custom Container Solutions LLC
Bucknell Golf Club
Blooming Meadows Farm
Borough of Watsontown
Spherion Staffing & Recruiting - Milton
Spherion Staffing & Recruiting - Sunbury
Ryder Supply Chain Solutions

CENTRAL PA BUSINESS & EDUCATION ASSOCIATION Seminar & Training Series

What is the Central PA Chamber?

9 to 11 a.m. Wednesday, March 6

Central PA Chamber of Commerce, 30 Lawton Lane, Milton

Cost: FREE to Attend

Come with questions and be prepared to deliver your elevator pitch!

Register by Feb. 28: www.centralpachamber.com/events

Presented by: **CENTRAL PA**
CHAMBER OF COMMERCE

Find the latest member news and events on our
Facebook and Instagram pages!

Time with Tea Jay

All in the Central PA Chamber Family

I know you've heard it said that we are a family here at the Central PA Chamber and we truly are. Not just the internal team, not just the Board and Committee members, not just the President's Club members or sponsors. Everyone is family.



On Christmas Eve I received a call from the friend-wife of a beloved Central PA Chamber family member James "Jim" King to share of his passing earlier that morning. There are no words to express the amount of sympathy and prayers of peace and love to a lovely bride who has just lost her husband of sixty-one years.

In the days after receiving the notice I did much reflection on the impact that Jim had on my life and how blessed I am to have known him as a co-worker, friend, mentor, and family member. There has been such a void at the Central PA Chamber since Jim's official retirement from the front desk; but the memories are abundant. The stories and Jim-isms we have are truly book worthy.

Jim's family expressed much gratitude for the Central PA Chamber honoring Jim with an Impact Award many years ago and then more recently with the dedication of a flagpole onsite at the Central PA Chamber facility. That day was beautiful and the photographs we have are proudly displayed. Jim was so incredibly humble. His family said how special it was that he was honored and recognized while he was still here with us to enjoy it. I can't agree more.

Too often we only share the honors and praise when someone has passed. Let's work to do it NOW in honor of Jim. Call someone out to let them know they've done a good job. Recognize their efforts now. We are quick to share and talk about mistakes, shortcomings, etc. so why not the positive things?

I loved that Jim cared so deeply about everyone's success and he genuinely gave feedback, good, bad, or indifferent. The one thing you could be sure of was that it was genuine and came with the purest intentions for your success.

Doesn't cost you anything to tell someone you believe in them. Those little things can help someone in their journey. Lead with kindness and compassion like Jim King did every single day.



Tea Jay Aikey
President & CEO
tjaikey@centralpachamber.com

In Memoriam



James E. King

Lt. Colonel James Edward King, of Lewisburg, passed away on the morning of Dec. 24, 2023.

He was born Sept. 24, 1939, in Trafford, Pa., to Daniel and Estelle (Quinn) King. After graduating from the University of Dayton, with a bachelor's in chemical engineering, Jim began a career in the Army, which took him all over the world. No matter how far his travels he was never far in heart or spirit from his wife of 61 years, Geraldine (Ciao). High school sweethearts who married on July 7, 1962, they built a life that includes four children, 11 grandchildren and seven great-grandchildren (with one on the way).

Jim had a distinguished military career which included two tours in Vietnam. After serving this country for 22 years, Jim moved into civilian life with the same sense of purpose and dedication. Jim worked tirelessly to improve the economic development in Central Pennsylvania at the Ben Franklin Program and with Northumberland County. Never able to sit idle, Jim later volunteered at the Central Pennsylvania Chamber, where a flagpole stands in commemoration of his years of service. Jim was also an active member of the Sacred Heart Catholic Church in Lewisburg for over 40 years.

Jim was a man known for great faith and work ethic and for giving the best hugs.

Jim is predeceased by his parents and brother, Daniel. He is survived by a brother, John; several nieces and one nephew.



Workman's New Role at Chamber

MILTON – The Central PA Chamber of Commerce is pleased to announce their new Communication Director will be Ryan Workman.

Workman has served as the Chamber's Business & Education Coordinator since 2022 but stepped into the Communication Director role after the previous director left for a new position with another organization last November. Central PA Chamber President & CEO, Tea Jay Aikey, encouraged Workman to take on the duties of Communications Director on an interim basis.



Ryan Workman
Communications Director

According to Aikey, "Ryan has completed the role as Interim Communications Director for the past thirty days with great energy, attitude, and success. Ryan adapted quickly to the scheduling requirements of the role as well as the various programs while maintaining the Central PA Chamber brand, look, and feel."

Aikey added "I am proud of Ryan's dedication to learning this role and taking on the responsibility in such a professional manner under the circumstances and limited time to train with the former director."

Workman stated, "I am honored to serve the Central PA Chamber of Commerce and very glad to have received the tutelage of my predecessor. I look forward to magnifying the voice, message, and success of our members as the new Communications Director."

Ribbon Cuttings



The Central PA Chamber helped celebrate State Senator Lynda Schlegel-Culver's new office in Shamokin Dam. Pictured from left: Tea Jay Aikey, Sen. Schlegel-Culver, Jessica Beaver, Ryan Workman.

Celebrating the new location with an open house, refreshments, & 15% off storewide. From 8 a.m. to 7 p.m.!

Ribbon Cutting

At OFFICE OUTLET

1 p.m. Friday, March 1 @ 7901 Old Turnpike Road, Mifflinburg

CENTRAL PA
BUSINESS & EDUCATION ASSOCIATION

Seminar & Training Series

SBA Programs Overview

10 to 11:00 a.m. Wednesday, March 13
In-Person @ the Central PA Chamber
Cost: FREE Register by March 4:
www.centralpachamber.com/events

Solomon Wheeler,
Branch Manager, Eastern PA District
U.S. Small Business Administration

Presented by:

CENTRAL PA
BUSINESS & EDUCATION ASSOCIATION

Seminar & Training Series

How to Deliver a Great Elevator Pitch

9 to 11 a.m. Wednesday, March 19
Central PA Chamber of Commerce, 30 Lawton Lane, Milton
Cost: \$10 Member / \$15 Non-Member
Register by March 12: www.centralpachamber.com/events

Presented by: **CENTRAL PA**
CHAMBER OF COMMERCE

Members Recognized

Bowen Agency Realtors

SELINGSGROVE - Austin Snyder of Mifflinburg recently joined the sales team at Bowen Agency Realtors in the Selingsgrove office. He is teaming up with veteran agent Dale Tittle, and the two of them are excited about the opportunity to serve buyers and sellers in the Central Susquehanna Valley together. Austin, a Union County native, brings his energy, enthusiasm and previous customer service experience to his new position. Larry Johnson, Bowen Agency Realtors Broker and President says, "Austin has taken full advantage of our top notch new agent training, and is being mentored by one of our top producing agents. We are glad to welcome him to our team and look forward to his success." Bowen Agency Realtors is a full-service real estate brokerage with offices in Selingsgrove, Sunbury and Lewisburg.

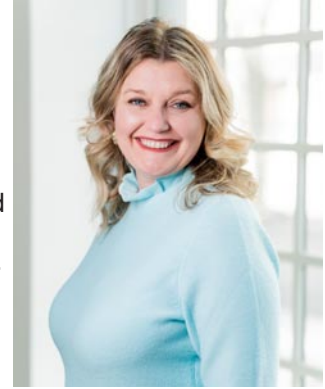
Pictured from left to right: Jim Dougherty, Executive Director, Community Arts Center; Jonah Howe, Regional Affairs Director, PPL Electric Utilities; Ana Gonzalez-White, College Relations Officer in charge of development, Community Arts Center.



First Community Foundation Partnership

The First Community Foundation Partnership of Pennsylvania (FCFP) is proud to announce President & CEO, Jennifer D. Wilson, was named one of City & State Pennsylvania magazine's 75 most influential difference-makers. Under Jennifer's leadership, FCFP has provided over \$52 million in grants, scholarships, and received \$54.6 million in charitable donations as well as launched a community anti-racism initiative, First Focus. She has helped to make lasting differences through her work done at FCFP. Jennifer curates a continuous effort of giving within our local communities and a constant push for positive change.

The men and women that make up the Impact 75 honorees were announced and celebrated on Tuesday, December 12, 2023, at the Philadelphia Hilton at Penn's Landing with several well-known keynote speakers. They are the highlight of the December issue of City & State Pennsylvania magazine, available at your local newsstand and digitally at this link: <https://fliphtml5.com/bundy/owgw>



Campus Theatre

LEWISBURG — The Campus Theatre, Lewisburg's historic Art Deco, single-screen theatre, seeks applications for Executive Director. Scotta Magnelli, who has served as the head of the 501(c)(3) non-profit organization that operates the theatre for the last five years, will be leaving the organization in mid-2024.

"On behalf of the Board of Directors, the staff, our members, and our supportive community, I want to thank Scotta for her commitment to the theatre and the work she has done to help further our mission of delivering engaging, entertaining, and inclusive programming to the region," said Chris Baylor, President of The Campus Theatre Board of Directors. "Please join me in wishing her the best in future endeavors."

"I have truly enjoyed my time here," said Ms. Magnelli. "I love this theatre, my team, and the incredible community we serve. But I'm looking forward to new adventures. I will remain with the theatre as we transition to a new Executive Director."

Mr. Baylor noted the theatre's Board of Directors has established a search committee and is now accepting applications from candidates interested in the position. Interested candidates please send your cover letter to campustheatreed-search@gmail.com or mail to The Campus Theatre, 413 Market Street, Lewisburg, PA 17837.

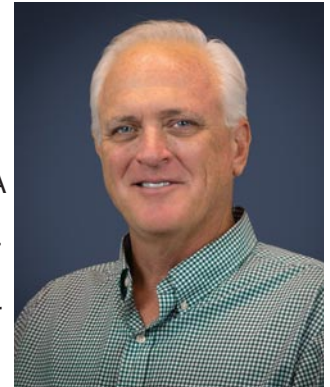
"We're looking for an energetic individual who has a passion for the arts and is ready to build on the foundation Scotta has helped to solidify," said Mr. Baylor. "We're well-positioned to grow our membership, increase our funding base, and welcome the community into our beautiful space for unique entertainment opportunities."

Herbert, Rowland & Grubic, Inc.

Herbert, Rowland & Grubic, Inc. (HRG) has acquired Bradford Engineering Associates, Inc. (BEA). BEA is a small, privately held company based in Delaware County and their main office is located in Aston.

BEA's core services are very similar to HRG's existing water and wastewater service group with a specific emphasis on Act 537 planning, pretreatment consulting, infiltration and inflow (I&I) studies, construction management, wastewater system design, and geographic information systems (GIS) development. BEA has a mixture of clients within both the municipally operated and private utility markets. As part of the acquisition, HRG has hired all previous BEA employees and will assume all BEA clients and projects within the region. BEA President, Walter Fazler, P.E. will work with HRG's King of Prussia leadership team including Cory Salmon and Lance Weatherly as part of the integration and growth strategy.

"I am very excited about this opportunity for both HRG and BEA. It's a simple way to bring the depth and expertise of a nationally recognized leader like HRG to an operation like BEA that has existing momentum and an established presence in the region. As with any acquisition, alignment of the firm's culture, core values, and commitment to quality are at the foundation of long-term success; we're excited about how similar we are in these areas. We've worked together on projects and have serviced clients as a team for several years now and we know what to expect from one another." said Fazler.



CENTRAL PA

BUSINESS & EDUCATION ASSOCIATION

Proud Supporter of

FOUNDATION FOR FREE ENTERPRISE EDUCATION
excellence in learning

"This experience has been life-changing, and I will forever be grateful for the opportunity to learn, grow, and make unforgettable memories."

Students apply now at www.pfew.org

LIVE HIGH SCHOOL SPORTS

and Original Local Programming

Exclusively on Service Electric Cablevision
Channel 508 and On Demand

secv8.com

MILTON HIGH SCHOOL CTE Appreciation MONTH

FEBRUARY 2024

- 7th Check It Out Day**
Members of business, industry, and community check out our CTE Programs
- 5th-9th CTSO Appreciation**
Highlight our student organizations: FBLA, FFA, NTHS & SkillsUSA
- 7th Chamber Breakfast**
Enjoy breakfast, learn about Milton's CTE and tour the programs. Chamber members and guests are welcome.
- 13th 4th Grade CTE Day**
High school students educate 4th graders about future careers available in CTE.
- 21st What's for lunch?**
Enjoy the delicious food at lunch and view the classrooms. Grandparents, parents, & guardians are all welcome.
- 28th CTE Olympics**
CTE students compete in different events.

Mark your calendars

Sign up required for Check it Out Day & What's for Lunch?

Proudly serving Centre, Clinton, Columbia, Lycoming, Mifflin, Montour, Northumberland, Snyder and Union Counties.

We welcome you to visit The Link

The 2nd Friday of the Month, 9:30am – 2:00pm

Milton Public Library

541 Broadway, Milton, PA

The Link offers professional staff support for:

- Job Matching
- Career Guidance
- Workforce Training
- Recruitment Events

The Link is equipped with:

- Computers
- Internet Access
- Printing

ADA accessible

For the entire schedule including locations visit our **Facebook page @TheLinkMCC** under Events or to learn even more visit our website CentralPACareerLink.org

Questions? Call or email:
Robert Eddy
reddy@censop.com
Craig Kurtz
ckurtz@censop.com
570-220-0003

Face Masks are Not Required to Enter but Encourage

Bringing Pennsylvania CareerLink to You!
A proud partner of the AmericanJobCenter network

Advance Central PA
Linking People & Business

Equal opportunity employer/program. Auxiliary aids and services available upon request to individuals with disabilities. Program funded with federal dollars. For more information, visit: <https://ofcans.ccentralpa.org/about-us/public-notices/>.

Know someone recently hired, retired, honored or awarded?

E-mail:
nworkman@centralpachamber.com

Members Recognized ctd.

Innovative Manufacturer's Center

CENTRAL, PA – The Innovative Manufacturers' Center (IMC), Inc. is thrilled to announce its recent recognition by the Society for Human Resource Management (SHRM) as a SHRM Recertification General Provider. IMC is now authorized to offer Professional Development Credits (PDCs) for SHRM-CP® or SHRM-SCP® recertification activities.

As a SHRM Recertification General Provider, IMC's SHRM approved training programs will qualify for SHRM Professional Development Credits. These credits are specifically designed to enhance HR knowledge and competency in alignment with the SHRM Body of Applied Skills and Knowledge™ (the SHRM BASK™).

Dennis Gilbert, President of IMC, expressed his enthusiasm about this recognition, stating, "IMC is excited that our approved training programs and events will be able to provide SHRM Professional Development Credits to our manufacturing clients. Small and mid-sized businesses, including manufacturing, face a special challenge in attracting, selecting, onboarding, engaging, and retaining workers today, and IMC continues to add programs and services to assist our clients in addressing these concerns, including our 5 Module webinar series, 'Meeting the HR Challenge.'"

IMC, a public-private partnership, is dedicated to enhancing Central Pennsylvania's manufacturing community through innovation, productivity, and profitable growth to drive economic impact. The center's experts collaborate with Central Pennsylvania manufacturers in various areas, including human resources, continuous improvement, quality assurance, product development, marketing, sales, and more.

Evangelical Community Hospital

LEWISBURG – Evangelical Community Hospital announces receipt of the Orthopaedic Center of Excellence Designation from DNV. This designation affirms an organization's excellence in the provision of diagnostic services, surgical services, and therapies related to orthopaedic care.

The designation is the only one of its kind given to a hospital in Pennsylvania.

"Evangelical Community Hospital's orthopaedic program has long had a reputation for providing consistent, high-quality care through the SUN Orthopaedics of Evangelical practice of providers, the Hospital's inpatient orthopaedic care post-surgery, and rehabilitation through Physical Therapy of Evangelical," said Kendra Aucker, President and CEO of Evangelical Community Hospital.

"It is through that close collaboration and caring for the whole patient on all levels that the Hospital can stand firm in our offerings of exceptional care for patients of the Greater Susquehanna Valley. This DNV designation affirms that we have the equipment, personnel, and training that makes us a



demonstrated leader in safe delivery of orthopaedic services and validates all the effort we put into enhancing and ensuring the health of our patients."

The DNV Orthopaedic Center of Excellence designation is obtained by achieving advanced certification in at least three (3) advanced orthopaedic programs. The DNV advanced orthopaedic requirements are informed by the guidelines and recommendations of organizations such as the American Academy of Orthopaedic Surgeons, the American Association of Hip and Knee Surgeons, the ERAS® Society, the American Society of Anesthesiologists, and relevant requirements of the CMS Conditions of Participation for Hospitals.

"Achieving designation shows a commitment to excellence," said Kelly Proctor, President of DNV Healthcare USA Inc. "It helps demonstrate to your community that you are performing at the highest level."

To learn more about orthopaedic care at Evangelical, visit www.EvanHospital.com/Ortho or call SUN Orthopaedics of Evangelical at 1-800-598-5096 to make an appointment.

Evangelical Community Hospital

LEWISBURG – Aubrey Alexander Toyota of Selinsgrove recently donated \$10,000 to the Thyra M. Humphreys Center for Breast Health at Evangelical Community Hospital in support of women's health programs and services.

Haykel Abrougui, General Manager of Aubrey Alexander Toyota, said he felt it was important to support a local cause. "Aubrey Alexander Toyota is proud to be part of this community and we know there are people in our region who could use help when it comes to addressing health issues. By making this donation, we know Evangelical will put it to good use, and that it will truly make a difference."

Abrougui said funds were raised during a four-week period in late 2023 through the sale of new cars. \$100 from every car sold went toward the fundraiser, and he added that this particular cause is a personal one for him. "In 2014, I lost my aunt to breast cancer at just 43 and it affected everyone around her. Making this contribution to the Thyra M. Humphreys Center for Breast Health will hopefully ensure that anyone who needs mammography can get the screenings that are so important to their health."

The Thyra M. Humphreys Center for Breast Health has a dedicated team of specialists who provide comprehensive care including screenings, diagnosis, and treatment for women. The care doesn't stop there, after diagnosis the Center offers survivors support through clinics, programs, and one-on-one attention with professionals trained to understand the psychological, physical, emotional, and social effects of a cancer diagnosis.

For more information about the Center for Breast Health and the services available, call 570-522-4200.



Did You Know?



2024 Schedule of Legislative Events

Did you know the Central PA Chamber of Commerce hosts Legislative Events with elected officials and public dignitaries who represent our state and region in Harrisburg and Washington DC on a quarterly basis?

Legislative Events provide an opportunity for Chamber members and the community-at-large to meet federal, state, and local elected officials, and to hear about issues affecting the community—especially

related to business and commerce.

Sponsoring these events also provides a platform for a Chamber member to address a large audience and gain publicity through print, digital, and social media like this IYB publication. Contact Membership and Finance Director, Jessica Beaver for complete details.

Legislative Events take place at the Watson Inn’s Moon Room in Watsontown and begin with a breakfast buffet, specially prepared for the attendees. After some opening remarks and a brief presentation from the sponsor, the keynote speaker gives their remarks and takes your questions. There is always ample time to network. It is a nice way to start a Friday!

As you can see below, the four Legislative Events for 2024 are already scheduled and registration is open now for you to reserve your seats.




Welcomes
State Rep. Michael Stender (R-108)



7:30 to 9 a.m. Friday, Feb. 23 @ Watson Inn, Watsontown
Topics to include: Perspective on Harrisburg & current issues from our region's newest representative.

Central PA Chamber Members - \$20; Non-Members - \$25
www.centralpachamber.com/events



Register by Friday, Feb. 9!



Welcomes
State Sen. Lynda Schlegel-Culver (R-27)



7:30 to 9 a.m. Friday, April 26 @ Watson Inn, Watsontown
Topics to include: Highlights from the Senate Appropriations Hearings - Setting the Stage for the Budget.

Central PA Chamber Members - \$20; Non-Members - \$25
Register by April 12 @ www.centralpachamber.com/events



Register by Friday, April 12!



Welcomes
State Rep. Joe Hamm (R-85)



7:30 to 9 a.m. Friday, Sept. 13 @ Watson Inn, Watsontown
Topics to include: state budget, economy & inflation, regulations & permits.

Central PA Chamber Members - \$20; Non-Members - \$25
www.centralpachamber.com/events



Register by Friday, Aug. 30!



welcomes
PA State Treasurer Stacy Garrity



7:30 to 9 a.m. Friday, Nov. 1 @ Watson Inn, Watsontown
Topics to be announced.

Central PA Chamber Members - \$20; Non-Members - \$25
www.centralpachamber.com/events



Register by Friday, Oct. 18!

Learn more about these upcoming Legislative Events in Jessica’s Column on page 18.

What's Happening ctd.

be kind.
KINDNESS WEEK THEMES!
Feb 12-16, 2024

Monday - Kind is the New Cool!

Tuesday - Be Kind to All Kinds!

Wednesday - Random Acts of Kindness!

Thursday - Be Kind to Your Mind!

Friday - Celebrate Kindness!

Don't forget to take pictures and post them on social media!
Tag us @SusquehannaValleyUW with the hashtag #BeKind2024.

Creative Teamwork. Brilliant Solutions.

Whether you need a creative way to stimulate your business with web, print, apparel, or promotional items, allow the dedicated team at AdOne to help increase your brand awareness! We deliver the project with competitive pricing and fast turn times.

AdOne
advertising & design

print design web development apparel promotional items display/signage

570-286-1111
mypromotionalneeds.com

Spring Season Begins



The Weis Center's spring 2024 season has officially commenced.

The season brochure is now available as an eco-friendly, downloadable and printable PDF at Bucknell.edu/WeisCenter.

Hardcopies are available at the Weis Center and throughout the Susquehanna River Valley region including the Susquehanna River Valley Visitors Bureau, Columbia Montour Visitors Bureau, local Chambers of Commerce and local libraries.

The Weis Center's 2023-24 season is supported by the following season-level sponsors: Bucknell Sports Properties, The Daily Item, Seven Mountains Media, Sunbury Broadcasting Corporation and WVIA.

Event sponsors include Backyard Broadcasting, Bucknell Music Department Gallery Series, Martha and Alan Barrick, Centre Daily Times, Class of 1953 Fund, Coldwell Banker Penn One Real Estate, Columbia-Montour Visitors Bureau, Nancy and Sam Craig, Evangelical Community Hospital, Geisinger, Jazz at Bucknell, Clayton and David Lightman, Teri MacBride and Steve Guattery, The News Item, PPL Foundation, Press Enterprise, Asbury Riverwoods, Adriana Rojas and family in memory of Andrew, Service 1st Federal Credit Union, Gary and Sandy Sojka, Standard Journal, Stone State Entertainment, ViaMedia, Williamsport Sun Gazette, Karl Voss and Chanin Wendling family, PAHomepage/WBRE/WYOU, WNEP and WVIA.

Grant funding for the season includes Mid Atlantic Arts Foundation, Western Arts Alliance Advancing Indigenous Performance (AIP) Touring Fund and the Andrew W. Mellon Foundation, National Endowment for the Arts, and the Pennsylvania Council on the Arts.

Tickets are now available:

Weis Center Atrium
Monday–Friday, 10 a.m.–4 p.m.
Elaine Langone Center, Campus Activities & Programs Center
Monday–Friday, 10 a.m.–4 p.m.
The Campus Box Office opens one hour prior to performances at the performance location.

570-577-1000 or Bucknell.edu/BoxOffice

Note: All performances take place at 7:30 p.m. in the Concert Hall, unless otherwise noted.

For more information about the Weis Center for the Performing Arts, go to Bucknell.edu/WeisCenter or search for the Weis Center on Instagram, Facebook, Twitter or YouTube.

ERCE



Thank you, Cheryl!

CENTRAL PA

CHAMBER OF COMMERCE

Help Wanted!

Front Desk Volunteer

The Central PA Chamber of Commerce has an immediate opening for a Front Desk Volunteer.

Responsibilities mostly involve clerical work (e.g. typing, answering the phone, greeting visitors, receiving mail/packages, directing guests, assisting with on-site events and being available when Chamber staff is off site). Customer service experience is a plus!

Flexible schedule between 8 a.m. and 4:30 p.m.

Monday thru Friday.

Interested? E-mail tjaikey@centralpachamber.com



Our Customers.
Our Community.
Our Mission.
Since 1948.



secv.com | 800.522.2389

LANDLORD EVENT

MONDAY, FEBRUARY 26, 2024

Marzoni's Brick Oven & Brewing Co.

6PM-8PM

834 N Susquehanna Trail,
Selinsgrove, PA 17870

Topics of Discussion:

- ✓ Rental Rehabilitation Program
- ✓ Housing Choice Voucher

For Landlords in
Union & Snyder
Counties

RSVP by February 20, 2024
By calling: 570-522-1300

DINNER WILL BE PROVIDED



Good People Installing Trust On Time

COMMERCIAL AND RESIDENTIAL GLASS EXPERTS



upgpa.com • 570-286-6791
4762 State Route 890
Sunbury, PA 17801

Jessica's Jottings



Legislative Events

The Central PA Chamber of Commerce plans quarterly Legislative Events. These events give you the opportunity to hear from officials who can update or inform you on various topics ranging from policies and legislation that can affect your personal and professional life. You might remember them when they were held at the Country Cupboard, but now we have a new venue and the same great breakfast! Below are the details for each Legislative Event happening in 2024!

In February, we'll hear from our sponsor Intrada Technologies and keynote speaker Rep. Michael Stender. Intrada Technologies delivers strategic, innovative, efficient, and effective solutions with technology. Think of Intrada as an instant expansion of your IT Department. Rep. Stender will be giving you his perspective on Harrisburg as he is new to his role in the State House as well as informing you on current issues happening in our state government.

Next, in April we'll hear from our sponsor Fulton Bank and keynote speaker State Senator Lynda Schlegel-Culver. Fulton Bank strives to deliver the best banking experience to their customers and prides themselves on the convenience of finding a branch or atm near you. Senator Schlegel-Culver has been a presence in our region for many years and shows her support to many of our local businesses. Even with her busy schedule she always makes time to meet and speak with the people of our region. Topics for this event will be added to our website soon.

September's breakfast is sponsored by The Wealth Factory and the keynote speaker State Rep. Joe Hamm. The Wealth Factory is an independent financial planning, investments and insurance for individuals and business - including employee benefit programs. State Rep. Hamm represents the 85th House District. He will be discussing the state budget, economy and inflation, and regulations and permits.

Finally, in November, hear from Service 1st Federal Credit Union and keynote speaker PA State Treasurer Stacy Garrity. Service 1st Federal Credit Union prides themselves on helping our region continue to grow by their generosity to nonprofits and charitable contributions. They truly are friends you can bank on. Treasurer Garrity is an Army Veteran and has served as Treasurer since 2021. Topics for this event will be announced at a later date.

All Legislative Events are held at the Watson Inn. Registration is open now, and you can go to www.centralpachamber.com to claim your seat. These events are open to the public and costs \$20 for members and \$25 for non-members. We cannot wait to see you each quarter at the Watson Inn!

Jessica Beaver
Finance & Membership Director
jbeaver@centralpachamber.com

Join us at an upcoming event!
Visit: centralpachamber.com/events

LESSIE'S GARDEN

Greenhouse & Gift Shop
Plants with a purpose

TREAT THE ONE YOU LOVE!

CHOOSE FROM:

- RED
- DEEP ORANGE
- BRIGHT YELLOW

\$50 DOZEN
\$30 1/2 DOZEN
\$5. SINGLE

CANDY ARRANGEMENTS JUST \$35.00!

To order call (570) 622-7368 or email eumbenhen@avenuesofpa.org
2 Park St., Pottsville

Place your order by February 7th.

Your purchase supports individuals with disabilities.

LIKE US ON FACEBOOK @LESSIE'S GARDEN GREENHOUSE & GIFT SHOP

14TH ANNUAL BEER TASTING DINNER

THURSDAY, MARCH 21, 2024
AT MOUNTAIN VALLEY GOLF COURSE

36th Annual Duck Race

Grand Prize \$2024.00!

Many other prize packages valued at over \$100.00!

Duck Tickets just \$5.00!

Tickets Available in March.

Sunday April 28th, 2024 * Walmart SuperCenter, St. Clair
Noon 5, race time 3:32

***FOOD *VENDORS**
***ENTERTAINMENT *FAMILY FUN**

avenuesofpa.org

Realtor of the Year


LEWISBURG — Chris Coup, Associate Broker at The Coup Agency was recognized as the Central Susquehanna Valley Board of REALTORS® 2023 REALTOR® of the Year at a General Session Meeting on Wednesday January 24 at the Pine Barn Inn. The REALTOR® of the Year Award is the greatest honor bestowed upon a REALTOR® by their peers. The award is given to recognize and honor a REALTOR® for their outstanding work and commitment to the real estate industry, general public, local community, as well as family and friends. Coup was nominated by his fellow REALTORS® and selected by a panel of previous recipients of the award.

Rick Coup, Broker at The Coup Agency was also recognized at the same meeting as a REALTOR® Emeritus, which is bestowed upon a REALTOR® who has been a member of the Nation Association of REALTORS® for at least 40 years. Rick will mark the beginning of the 46th year, later this year.

The Coup Agency is a 4th Generation Real Estate and Insurance Agency with their main office located at 49 Broadway in Milton and they have recently relocated their Lewisburg Office location to the Lewisburg Professional Building at 23 N. Derr Dr. Suite 1 in Lewisburg.



SAVE
THE
DATE



SATURDAY

April **20** 2024


6:00 PM

NEIGHBORS


HELPING NEIGHBORS

(formerly Holiday Happenings)

csgiving.org/neighbors



Community Giving
FOUNDATION
Danville



INVITATION
TO
FOLLOW

Event proceeds support the
Neighbors Helping Neighbors
Fund of the Community
Giving Foundation.

We want to hear your good news!

To appear in It's Your Business, e-mail:

rworkman@centralpachamber.com


CENTRAL PA
CHAMBER OF COMMERCE

INSIDE JOBS

10 a.m. to 12 p.m. Wednesday, Mar. 27
@ 322 Raspberry Avenue, Sunbury

- A behind-the-scenes tour of the facility
- Tasting & snacks provided
- Must be 21 to participate

Featuring:



Inside Jobs offers members a chance to tour facilities of fellow businesses/organizations. Learn more and register by March 20 @ www.centralpachamber.com/inside-jobs-tours

BY THE NUMBERS...

*As of publication time

Since January 1st 2024...

2,023 individual browsers visited centralpachamber.com!

12,714 individual pages were visited!

And our social media posts reached **38,700** individual interactions!

Join us at these upcoming events!

BREAKFAST BRIEFING

Off-site!

7:30 to 9 a.m. Friday, Feb. 9
@ Milton Area High School,
700 Mahoning St., Milton

Off-site!

Free to Attend
Register by Feb. 2 @ centralpachamber.com/events

Sponsored by:



CENTRAL PA CHAMBER OF COMMERCE

Welcomes

State Rep. Michael Stender (R-108)



7:30 to 9 a.m. Friday, Feb. 23 @ Watson Inn, Watsontown

Topics to include: Perspective on Harrisburg & current issues
from our region's newest representative.

Central PA Chamber Members - \$20; Non-Members - \$25
www.centralpachamber.com/events



Register by
Friday, Feb. 9!

CENTRAL PA BUSINESS & EDUCATION ASSOCIATION

Seminar & Training Series

What is the Central PA Chamber?

9 to 11 a.m. Wednesday, March 6

Central PA Chamber of Commerce, 30 Lawton Lane, Milton

Cost: FREE to Attend

Come with questions and be prepared to deliver your elevator pitch!

Register by Feb. 28: www.centralpachamber.com/events

Presented by: **CENTRAL PA**
CHAMBER OF COMMERCE

BREAKFAST BRIEFING

7:30 to 9 a.m. Friday, March 15 @
the Central PA Chamber of Commerce
30 Lawton Lane, Milton.

Members - FREE; Non-members - \$7
Register by March 8 @ centralpachamber.com/events

Sponsored by:



service1st

Federal Credit Union | Friends you can bank on.

It's a BRIGHT idea!



Marketing
CENTRAL PA
CHAMBER OF COMMERCE

Place your clickable ad here.
Advertise with the
Central PA Chamber.
Seen by thousands, monthly.