

# IT'S YOUR BUSINESS

www.centralpachamber.com

Volume 8, Issue 1 - January 2023

## RtB revamping, pg. 16

### RAISING the Board

Practice. Act. Apply. Connect.



## New board directors,

pg. 3



*Board of Directors*

- |   |  |
|---|--|
| <b>Rob Jones</b><br>Milton Historical Society             | <b>Skyler Herb</b><br>Skyworks Equipment Rental          |
| <b>Chenelle Thomas</b><br>ClearView Asset Protection      | <b>Lennea Brown</b><br>Heritage Springs Memory Care      |
| <b>Genie Bausinger</b><br>Milton Regional Sewer Authority | <b>Will Greiner</b><br>Fabtex                            |
| <b>Alison Hall</b><br>The UPS Store                       | <b>Keith Foust</b><br>Susquehanna Fire Equipment Co.     |
| <b>Nathan Lawrence</b><br>United Plate Glass              | <b>Brad Lawton</b><br>Lawton Insurance Agency            |
| <b>Lauren McDonald</b><br>The Wealth Factory              | <b>Ashley Parrish</b><br>First Commonwealth Bank         |
| <b>Rachael Herb</b><br>Service 1st Federal Credit Union   | <b>Ginnetta Reed</b><br>T-Ross Brothers Construction     |
| <b>Brandon Schemery</b><br>Backyard Broadcasting of PA    | <b>E. Terry Baldwin - Solicitor</b><br>Baldwin & Baldwin |

*Staff*

- Tea Jay Aikey - President & CEO**  
tjaikey@centralpachamber.com
- Jeff Shaffer - Communication Director**  
jshaffer@centralpachamber.com
- Jessica Beaver - Finance & Membership Director**  
jbeaver@centralpachamber.com
- Ryan Workman - Business & Education Coordinator**  
rworkman@centralpachamber.com

# The Inside Scoop



Resolutions or not, a New Year can mean many new beginnings.

We're highlighting a few in this issue, including our incoming class of Chamber Board Directors (see the next page), and giving our successful Raising the Board program a revamp (page 16).

Of course, there is always something new on the pages of IYB, such as new members to welcome (page 4), new events (starting on page 6), and new business (see page 14).

I would also encourage you to take in our impressive numbers featured on the back page this month. It's a recap of our success in cyber space in 2022. We made some significant gains. And, we want to use our popularity to further your business or organization. It can be as simple as sending me your great news or upcoming event information, which could appear at no cost on our Facebook/Instagram pages, or for a nominal fee, be the first to be seen on our website's homepage or events calendar for an entire month (or longer)! All you have to do is contact me for details.

With a New Year, I also want to encourage Central PA Chamber members who have not been sharing their news and events with us to do so. If you don't know where to begin, I'm happy to help. Here, we want to see everyone highlight their successes and changes, both large and small. It's a matter of supporting each other and self promotion, both of which are important for your business/organizational growth.

If you prefer a more hands off approach, there is always room for you to advertise on these pages. This guarantees you'll appear each and every month you commit to. As always, the rates are very reasonable. Enjoy the issue!



Jeff Shaffer, Editor  
Communication Director  
[jshaffer@centralpachamber.com](mailto:jshaffer@centralpachamber.com)

## The President's Club

Thank you, 2022 Members!

- |                                       |                                    |
|---------------------------------------|------------------------------------|
| Abe's Custom Woodworking              | Meixell Diehl Insurance            |
| Backyard Broadcasting of Pennsylvania | Mifflinburg Bank & Trust Company   |
| Century 21 Mertz & Associates         | NESCO Resource                     |
| ClearView Asset Protection            | North Central Sight Services       |
| Coldwell Banker Penn One Real Estate  | North Shore Railroad Company       |
| Contrast Communications               | On Fire Promotions                 |
| Davis, Davis & Kaar                   | PenTeleData                        |
| Decal Dynasty                         | PPL Electric Utilities             |
| Evangelical Community Hospital        | Raceway Mobile Storage             |
| Fulton Bank                           | RE/MAX Bridges - Ann Hilliard      |
| Green Ridge Graphics                  | Riverwoods Senior Living Community |
| Heaven's Best Carpet Cleaning         | Safeguard Business Systems         |
| Heritage Springs Memory Care          | Service 1st Federal Credit Union   |
| Hosterman Creative                    | Service Electric Cablevision/SECV8 |
| i3 Point-of-Sale                      | Sunbury Broadcasting Corporation   |
| iHeartMedia                           | Susquehanna Fire Equipment Company |
| Interaction Dynamics Group            | Susquehanna Valley Limousine       |
| Java Momma                            | T-Ross Brothers Construction       |
| Jersey Shore State Bank               | The Standard-Journal               |
| La Primavera Italiano Ristorante      | The UPS Store                      |
| Lawton Insurance Agency               | The Wealth Factory                 |
| Lewisburg Pharmacy                    | TPS                                |
| LIVIC Civil                           | Unique Inspirations Limited        |
| LMJJ Creative Property Solutions      | Watsonstown Dental                 |
| MCPS Credit Cards                     | Weaver Wireless Consultants        |

The President's Club is an exclusive sponsorship program created to prominently recognize companies that contribute to the Central PA Chamber over and above their annual membership investment. For more information, call 570-742-7341.

## It's Your Business Deadlines

Below are upcoming *It's Your Business* due dates to help ensure your member information appears in IYB. Every effort is made to include information in a timely manner.

*Note: Only paid advertisements are guaranteed.*

**February Digital Issue**  
News & Ads due by Jan. 13

**March Digital Issue**  
News & Ads due by Feb. 10

**Spring Print Issue\* (released early April)**  
Ads & Flyers due by March 10

**April Digital Issue**  
News & Ads due by March 17

\*The Central PA Chamber also publishes *IYB Quarterly* for each of the four seasons. Copies are available at public member locations across the region.

If interested in being a drop-off location, e-mail [jshaffer@centralpachamber.com](mailto:jshaffer@centralpachamber.com).

# Membership elects new board directors

MILTON - The Central PA Chamber of Commerce welcomes four new members to its Board of Directors starting in January.

Elected to three-year terms following the membership wide election in November are: Keith Foust, President of Susquehanna Fire Equipment Company, Dewart/Lewistown; Rachael Herb, Assistant VP of the Lewisburg Market for Service 1st Federal Credit Union; Ginnetta Reed, Marketing Director of T-Ross Brothers Construction, Montandon; and Brandon Schemery, Senior Account Executive with Backyard Broadcasting of Pennsylvania, Williamsport.

In addition, incumbent Lauren McDonald, Account Executive for The Wealth Factory, Muncy, was re-elected to serve a second three-year term.

"I am honored to have another three years on the board," McDonald said. "The Central PA Chamber of Commerce has grown into a huge resource for businesses and non-profit organizations requiring a delicate balance of hard work and nuanced changes.

"We need to keep doing what we are known for while adapting to changes. I look forward to being part of it through my service."

While McDonald maintains a high level of excitement, it's showing to be infectious among the new board members.

"I'm in the big leagues now," Foust said. "It will be a great learning experience, and I'm looking forward to being a part of a great crowd."

Herb said being on the board will "provide me with an exciting opportunity to be an advocate for the needs of our local businesses. This aligns itself perfectly with Service 1st's core value of supporting communities. I am extremely passionate about helping our local businesses grow and thrive, which makes this opportunity a perfect fit for me.

Reed called it "an honor" to be elected to the Central PA Chamber's Board, adding, "I am excited and looking forward to serving our members."

And, Schemery, who is also an attorney by trade, and works with



Keith Foust



Rachael Herb



Lauren McDonald



Ginnetta Reed



Brandon Schemery

people from across a wide range of industries, said, "I'm excited to use my diverse background to serve the Central PA Chamber of Commerce and its members."

With new board members means others are stepping down. They include: Andrew Hertzler, Owner of XW Construction, Watsonstown; Chris Pinchak, Owner/Operator of Heaven's Best Carpet Cleaning, Milton; and Todd Ross, President of the aforementioned T-Ross Brothers Construction.

Hertzler, who was on the board since 2018, said it was a new experience for him serving the community in this way.

"It's important to give back," he said. "I think it's something, as business owners, we sometimes fail to realize. It brought new perspective.

"I enjoyed my time and found it to be delightful and informative. I got to meet and learn from a lot of people and know them on a personal level."

"This will not be the end of the Chamber for me," said Pinchak, who served on the board since 2020 and as an officer in 2021. "I will still be around and active. I enjoyed my time on the board and learned a lot from everyone.

"I know the work will continue and progress in the future. The Central PA Chamber is an amazing organization to be a part of... Good luck to everyone!"

This concludes Ross's most recent service to the board. During another term, he served as chairman of the board and has been an active member for more than 20 years.

"I have enjoyed every moment of the experience," he said. "I have seen the growth of the former Milton Chamber of Commerce to what it is today. Our management team, led by Tea Jay Aikey, has taken our organization to new levels of training, assisting, and partnering with all of the businesses they serve.

"As I am stepping off the Chamber board for now, I am and always will have the Chamber's best interests at heart and will do everything I can to stay active and assist the Chamber team in any way I can. This Chamber has done so much for me and our business over the years, and I know that this trend will continue for many years to come."

Aikey, the Chamber's President & CEO, approaches this time of year with some mixed emotions.

"It's always bittersweet," she said. "The 'farewell' to those I've spent three years getting to know and work alongside is never easy. It isn't a 'goodbye' though, but rather a 'see you later.'"

**"We need to keep doing what we are known for while adapting to changes."**  
**- Lauren McDonald, The Wealth Factory**

**"I'm in the big leagues now!"**  
**- Keith Foust, Susquehanna Fire Equipment Company**

See "Election" (on page 11)



**Budman Auto Body**

Quality Collision Repairs on  
 All Domestic & Foreign Cars & Trucks  
 Alignment Specialists • State Inspection  
 Towing & Rollback Service

---

**47 Apple Street • Milton, PA 17847**  
**Phone: (570) 742-9627**



**Decal Dynasty**  
 WRAPS & GRAPHICS  
 VEHICLE & TRAILER WRAPS | SIGNS & BANNERS

**570.922.3361**  
 WWW.DECALDYNASTY.NET  
 A DIVISION OF POTOSKI DECAL SERVICE

**DECAL APPLICATION & REMOVAL**

Fleet & Truck Markings,  
 Custom Striping, Labels, Magnetic Signs,  
 Contractor Job Site Signs, Posters,  
 Window & Wall Graphics, Building Letters

*A Quality Service*

**decaldynasty.net • 17355 Old Turnpike Road (Rt 45), Millmont, PA 17845**



# Election 2022

Following the election in November, the individuals listed below are set to serve a three-year term on the Central PA Chamber of Commerce's Board of Directors starting this month. Thank you to all primary contacts or voting members who participated in the election! In addition the Chamber thanks all candidates, their nominators and the nomination committee!

## Keith Foust

*President*

**Susquehanna Fire Equipment Company**

## Ginnetta Reed

*Marketing Director*

**T-Ross Brothers Construction**

## Rachel Herb

*AVP Lewisburg Market*

**Service 1st Federal Credit Union**

## Brandon Schemery

*Senior Account Executive*

**Backyard Broadcasting**

## Lauren McDonald (incumbent)

*LPL Financial Advisor & CEO*

**The Wealth Factory**

*Read the full story about this past year's election starting on page 3.*

## New Members

### Fastenal Industrial Supply

2525 Old Route 15

New Columbia, PA 17856

570-538-1356

Nwalburn@fastenal.com

Nicole Walburn - General Manager

www.fastenal.com

*Industrial supply chain.*

### Elite Excavating Service

310 W. High St.

West Milton, PA 17886

570-220-2351

swertz@eliteexcavatingservices.com

Shawn Wertz - Owner

www.facebook.com/EliteExcavating

*Site excavation, demolition, water/sewer, installs/repairs, foundations, land clearing and erosion/sediment control.*

### HandyCrafts LLC

handycraftsllc@gmail.com

Thomas Beall-Ellersieck - Founder

www.facebook.com/profile.php?id=100076339929100

*We specialize in handmade items, crafted primarily out of wood and wire. If there's something you're imagining, we can probably create it for you!*

(As of Dec. 16, 2022)

American Red Cross

NCPA Chapter

Beiter's Inc.

Brighter Pathways Speech and Swallowing Services

Brookpark Pet Supply

Bucknell Sports Properties

Camp Koala

Christ Wesleyan Church

Cole's Hardware, Inc.

- Danville & Lewisburg

Cup O Code

Davis Davis and Kaar

DogWatch of East Central PA

Dwell Orphan Care

- Columbia & Lycoming Counties

East West Drilling Inc.

Fero Vineyards & Winery

GAF Roofing

Susquehanna Valley United Way

Herbert, Rowland & Grubic, Inc.

Heritage Springs Memory Care

- Lewisburg & Montoursville

K. Barton Reichard, Jr.

Kelly RV Inc

kinetic Business by Windstream

La Primavera Italiano Ristorante

Law Offices of Baldwin & Baldwin

Lewisburg Pharmacy

Matt Frye - State Farm

Insurance

McNerney, Page, Vanderlin & Hall

Meixell-Diehl Agency

Mifflinburg Bank & Trust

Company - Milton, Downtown

Lewisburg and Lewisburg

Milton Area School District

Milton Regional Sewer Authority

Northumberland County

Housing Authority

Nu-Tec Tooling Co., Inc.

Padgett Business Services

Robinwood Day Care Center

Rusty Clugston III

Rusty Rail Brewing Co.

SUN Habitat for Humanity

Susquehanna Human Resource

Management Association

The Coup Agency

- Milton & Lewisburg

Timberhaven Log &

Timber Homes

UPMC

VortX United Inc.

Warrior Run Petcare Center

Weaver's Tire Service, Inc.

Weis Markets, Inc.

Zook's Enterprises

*Find the latest member news on our Facebook and Instagram pages!*



Trish Brill, Graphic Designer/Office Manager

mail@middlecreeksigns.com



570-658-4511

www.middlecreeksigns.com

**How long have you been in business?**  
Since 1994.

**What makes your business unique?**

We started in our home when our kids were young. It meant a lot to us that they could see what we do and help out occasionally. Eventually, our youngest joined the business and has been instrumental in its growth. So, our family and Middle Creek Signs histories dovetail, which is special.

**What is a service that people are surprised to learn you offer?**

Variety! If we're doing sign panels for a customer, they're surprised we do vehicles. If we're working on vehicle lettering, they're surprised we also do carved, gilded, dimensional signs, etc. Logo design is always a surprise. Everyone here has a degree in graphic design, so there's lots of ideas from different perspectives.

**What is your Mission Statement?**

To provide custom, crafted signage that help our customers start and/or grow their business.

**What other community organizations do you participate with?**

Middle Creek Area Community Center, the Beaver Fair, the local Boy Scouts and fire departments.

Yvonne Arnold, Owner

570-538-2393

www.warriorrunpetcare.com

wrpetcare@windstream.net



**How long have you been in business?**  
Since 1972.

**What makes your business unique?**

Our client relations! We spoil their pets and pets staying at our resort have fun and leave happy and healthy. It's a good experience for both pets and their owners. Our staff enjoys grooming little dogs to make

them cute and easy to care for. Clients' dogs happily return wagging their tails on future visits.

**What is a service that people are surprised to learn you offer?**

We have a Kitty Cabana with spacious areas for boarding cats. Another surprise service is that we offer private on-site cremations by our other business, Pet Rest Memorial Park

& Crematory.

**What is your Mission Statement?**

To spoil pets in our care and keep them happy and healthy.

**What other community organizations does your organization participate in?**

Haven-to-Home, Arthur's Pet Pantry, local SPCAs, Little League teams, public libraries, local church and school events.



Andrew Hertzler, General Manager

xwconstruction78@gmail.com



570-436-0051

www.xwconstruction.com

**How long have you been in business?**  
Since 2011.

**What makes your business unique?**

We are a family run organization that has the ability to handle the toughest and most unique roofing projects in America.

**What is a service that people are surprised to learn you offer?**

RV roof repair and maintenance.

**What is your Mission Statement?**

To do high quality projects at an affordable price and make sure the consumer gets the best price.

**What other community organizations does your organization participate in?**

CSBA, PBA, NAHB

**Want to appear in the Member Spotlight?**

**E-mail Jessica Beaver at:**

**jbeaver@centralpachamber.com**

# What's Happening



## PATH to CAREERS

**Connect to your future workforce!**

Sign up today or join us at the next onboarding event to get started!

**When:** January 11 | 9AM-3PM  
**Where:** Central PA Chamber of Commerce  
**Address:** 30 Lawton Lane, Milton PA, 17847

[PathToCareers.org](http://PathToCareers.org)

- Stop in at your convenience to:
- Learn more about Path To Careers
  - Create a business profile
  - Begin connecting with local students and schools

Powered by:



**SAVE THE DATE**

# Winter Bridal Expo

The Standard-Journal and THE NEWS-ITEM  
 in partnership with  
**Whispering Oaks Vineyard**  
 1306 PA-61, Sunbury, PA  
**Saturday, January 14, 2023**  
**1pm-4pm**  
 (Snow Date: January 15, 2023)

- Vendors:**
- |                             |   |
|-----------------------------|---|
| 1st Choice DJ Service       | It's About 2 Go Down Entertainment      |
| Affordable Events by Nicole | Mary Kay                                |
| An Elegant Production       | OPTAVIA Nutritional Weight Loss         |
| Ard's Farm                  | Pretty Petals and Gifts by Susan        |
| Bethany Lahr Photography    | Sciccatano's Catering                   |
| Cheese Louise Cheese Cakery | The Breaking Bread Company              |
| Craft Catering              | The Springfield Banquet Hall & Catering |
| DJ Big Andy                 | Tony's Custom Tailor Shop               |
| Foss Jewelers               | Travel Depot                            |
| Fusion Formal and Bridal    | Unforgettable Events                    |
| Gable House Bakery          | Untangled Salon                         |
| Grilled Cheese Cafe II      | Wash Tubs Linen Rental                  |
| Harping Along               | Whispering Oaks Vineyard                |

# CENTRAL PA

BUSINESS & EDUCATION ASSOCIATION

## Seminar & Training Series

**Introduction to Grant Writing**  
 11 a.m. to 12 p.m. Tuesday, Feb. 21  
 In-Person @ the Central PA Chamber Ross Room  
 Cost: **Free of Charge**  
 Register: [www.centralpachamber.com/events](http://www.centralpachamber.com/events)

Presented by:   
 Central Susquehanna Intermediate Unit

# BREAKFAST BRIEFING

*Off-site!* 7:30 to 9 a.m. Friday, Feb. 10 *Off-site!*  
 @ Milton High School,  
 700 Mahoning St., Milton.

**Free to Attend**  
 (Registration is Required)

Sponsored by: 

Send your event information to [jshaffer@centralpachamber.com](mailto:jshaffer@centralpachamber.com)!



**The LINK**  
Proudly serving Centre, Clinton, Columbia, Lycoming, Mifflin, Montour, Northumberland, Snyder and Union Counties.

We welcome you to visit The Link  
**Friday, January 13th, 10:00 am – 2:00 pm**  
**Milton Public Library**  
541 Broadway, Milton, PA

**The Link offers professional staff support for:**

- Job Matching
- Career Guidance
- Workforce Training
- Recruitment Events

**The Link is equipped with:**

- Computers
- Internet Access
- Printing

**Face Masks are Not Required to Enter but Encourage**

**ADA accessible**

For the entire schedule including locations visit our **Facebook page @TheLinkMCC** under Events or to learn even more visit our website **CentralPACareerLink.org**


**Questions? Call or email:**  
Robert Eddy  
reddy@censop.com  
Craig Kurtz  
ckurtz@censop.com  
570-220-0003

Bringing **PA CareerLink** to You!  
A proud partner of the **AmericanJobCenter** network.

**Advance Central PA**  
Linking People & Business

Equal opportunity employer/program. Auxiliary aids and services available upon request to individuals with disabilities. Program funded with federal dollars. For more information, visit: <https://advancecentralpa.org/about-us/public-notices/>.

# Chamber Blood Drive



**Thank you to Tim Apple of Contrast Communications and the other 16 people that donated during our American Red Cross Blood Drive in December! Altogether, that can save as many as 57 lives! We appreciate all of you for giving the gift of life. There are blood drives scheduled at our location throughout the year, and you are welcome to join us for any or all of them as you're able to give. Visit: [www.redcrossblood.org](http://www.redcrossblood.org), and use code "PAchamber".**

**Find the latest member events on our Facebook and Instagram pages!**

Date	Event	Location	Time	Cost
1/11/23	Near Shoring as Opposed to Off Shoring, Why Choose the "Americas"	Webinar	10 to 11 a.m.	Free
1/17/23	Building an Innovative Enterprise: An Introduction to Design Thinking	Webinar	11 a.m. to 12 p.m.	Free
2/2/23	Lean Manufacturing Level One Certification	Penn College Earth Science Center 203 Allenwood Camp Lane Montgomery	8 a.m. to 4:30 p.m.	\$1,895



**Lauri Moon**  
**Manager, Outreach & Special Projects**  
**570-329-3200 ext 8085**  
[www.imcpa.com/events](http://www.imcpa.com/events)



**Small Business Development Center**  
**Bucknell University**  
570-577-1249  
[www.bucknell.edu/sbdcevents](http://www.bucknell.edu/sbdcevents)

Date	Event	Location	Time	Cost
1/12/23	Business Startup Basics for Central PA: The First Step	416 Market St., DeWitt Building, 3rd Floor Lewisburg	9:30 to 11:30 a.m.	No Fee
1/17/23	Should I Start This Business?	416 Market St., DeWitt Building, 3rd Floor Lewisburg	6 to 7:30 p.m.	No Fee
1/26/23	Navigating Personal and Small Business Taxes During These Uncertain Times!	Webinar	9:30 to 11:30 a.m.	No Fee



## A COVATION MasterClass

### 10-week Business Course

- Course launch: Feb. 1. Class discussion: 7 to 9 p.m. on Wednesdays.
- Course launch: March 1. Class discussion: 7 to 9 p.m. on Thursdays.

Valued at \$3,500,  
this program  
is FREE for  
Pennsylvania  
businesses!

### Why choose this program?

- A curriculum-based program built for small businesses
- Round-table discussions with other business owners
- 1-on-1 coaching sessions with business experts

Register Here:

[www.covationcenter.org/masterclass](http://www.covationcenter.org/masterclass)

## Mostly Mutts Madness

SUNBURY – Tickets are available for the annual Mutts Madness Raffle benefiting Mostly Mutts, a no-kill animal shelter near Sunbury. Prizes range from \$25 to \$500.

Tickets at \$10 each may be purchased from Mostly Mutts volunteers, by contacting Cindy Shamp at 570-473-1029, or sending an e-mail to [mostlymuttsonline@gmail.com](mailto:mostlymuttsonline@gmail.com).

The drawing will be held at 2 p.m. Sunday, Feb. 12, at Penn's Tavern,

113 River Road (Route 147), Sunbury.

Winners of the following prizes will be contacted by phone: \$500, one winner; \$300, one

winner; \$200, one winner; \$100, 10 winners; \$50, six winners; and \$25, eight winners.

All proceeds from the raffle support approximately 50 dogs and several cats housed at the shelter.

To learn more about Mostly Mutts, the animals available for adoption, and upcoming events, visit [www.mostlymuttsonline.com](http://www.mostlymuttsonline.com), call 570-988-6483 or follow Mostly Mutts of Sunbury PA on Facebook and MostlyMuttsSunbury on Twitter.



Mostly Mutts of Sunbury, PA.

## Do you like discounts on products and services?

Visit  
[www.centralpachamber.com](http://www.centralpachamber.com)  
and click on  
"Member-to-Member  
Discounts" under the  
"Membership" tab.

Want to offer a discount to fellow  
Central PA Chamber members?  
E-mail [jshaffer@centralpachamber.com](mailto:jshaffer@centralpachamber.com).



# CENTRAL PA

BUSINESS & EDUCATION ASSOCIATION

## Seminar & Training Series

### Federal Grant Writing

11 a.m. to 12 p.m. Tuesday, Feb. 28

In-Person @ the Central PA Chamber Smith Room

Cost: **Free of Charge**

Register: [www.centralpachamber.com/events](http://www.centralpachamber.com/events)



Find the latest member news and events on our Facebook and Instagram pages!

## BREAKFAST BRIEFING

7:30 to 9 a.m. Friday, Feb. 24 @  
the Central PA Chamber of Commerce  
30 Lawton Lane, Milton.

**Members - FREE; Non-members - \$7**  
(Registration is Required)

Sponsored by:



# CENTRAL PAL

CHAMBER OF COMMERCE

Pledged Asset Loan

To support its Vision of "Helping Our Region Grow", the Central PA Chamber of Commerce is offering Pledged Asset Loans (PAL) to member businesses and organizations that need help in securing business loans.

For more information, visit: [www.centralpachamber.com/pal](http://www.centralpachamber.com/pal).

"It was pretty much a seamless transaction with you guys, and it certainly will make things easier for me to do the renovations as opposed to having to use all of my cash...I'm certainly happy to suggest or encourage anyone who is looking to purchase to chat with you on how you can help them."

-Ann Hilliard, RE/MAX Bridges

# Wellness at Work

LEWISBURG - Evangelical Community Hospital has introduced the opportunity for businesses to take advantage of a Wellness at Work program through its Community Health and Wellness Department.

According to the U.S. Chamber of Commerce, workplace wellness programs are a win-win for both employers and employees. Employees who participate in workplace wellness programs tend to be fitter, more productive, and have better morale than employees who do not otherwise treat their chronic conditions.

Evangelical's Wellness at Work offerings provide a framework of options that can be chosen individually or be combined to create an integrative approach to wellness. The result can be a comprehensive approach that matches employers' goals and objectives for a healthier

workforce. Participants of worksite wellness programs see: Increased productivity and employee retention; Fewer sick days and healthcare expenses; Improved morale and mental health.

Wellness at Work businesses can tailor the program to meet goals and objectives for their employees. Options include: health and wellness seminars, wellness workshops, wellness challenges, health coaching, health and safety classes, and biometric and health screenings. All programs are put on by members of Evangelical's Community Health and Wellness team, which includes: health educators, certified health coaches, exercise science and fitness professionals, registered nurses, and registered dietitians.

To learn more, visit [www.EvanHospital.com/wellnessatwork](http://www.EvanHospital.com/wellnessatwork).

**Creative Teamwork. Brilliant Solutions.**



Whether you need a creative way to stimulate your business with web, print, apparel, or promotional items, allow the dedicated team at AdOne to help increase your brand awareness! We deliver the project with competitive pricing and fast turn times.

**AdOne**  
advertising & design



print design



web development



apparel



promotional items



display/signage

570-286-1111  
[mypromotionalneeds.com](http://mypromotionalneeds.com)



# Time with Tea Jay

## Worth a second chance



“What the New Year brings to you will depend a great deal on what you bring to the New Year.” – Vern McLellan, author The Central PA Chamber, which is your Chamber, spent the final quarter of 2022 re-focusing the services, benefits, and programs offered to best serve our members in 2023.

I work and live by the motto that, “I cannot fix what I do not know is broken.” And, I want you to acquaint yourself with that mindset. If you have a need, issue, concern, etc., please, bring it to my attention. I have an open door and am accessible by phone and e-mail as well.

The team and I spent the past few weeks ensuring we were ready to start the New Year having all resources prepared for the changeover from 2022 to 2023. There is much activity that keeps this organization and its resources operating smoothly, and we are so blessed to have a dedicated and talented team made of up Jeff, Jessica and Ryan. The sky is the limit for 2023, in my opinion, with a team like the one you and I both are fortunate to have alongside us.

The Seminar & Training Series schedule is in full swing and offering many programs and educational opportunities that will benefit you in the New Year. Remember, you get out of it what you put in. So, spare the time to invest in your team as I can guarantee you the return on investment is priceless. We are only as strong as our weakest link.

Speaking of teams, so many are looking to add to their team. We are continuing to focus on educating members on the benefits of second-chance hiring from the untapped workforce. I've been reading a book titled “Untapped Talent” (How second chance hiring works for your business and the community) by Jeffrey D. Korzenik. I found it interesting that as the 2010s ended, U.S. Labor Department statistics continued to report that job openings exceeded jobseekers, yet we seem to have labeled the worker shortage as a COVID-19 by-product. The reality is it's been a problem long before the pandemic, and it just so happens that the virus elevated the crisis of worker shortages.

We all know that without workers, you can't service customers well and you can't grow your business.

Is it a risk to employ second-chance employees? Yes, of course, but isn't hiring anyone a risk? I encourage you to familiarize yourself with the many state and federal resources available to employers that support this otherwise untapped workforce. We have several resources, and we encourage you to educate yourself to reap the rewards. There are many individuals who are ready to help your business succeed in the new year!

The SHRM Foundation research revealed that second-chance hires have lower turnover rates, which saves companies money. In addition, many companies that have changed their culture to ensure second-chance employees can succeed are finding that their entire workforce is now more loyal and engaged.

I can't wait to hear about your next new hire that you gave a second chance!

Tea Jay Aikey  
President & CEO

[tjaikey@centralpachamber.com](mailto:tjaikey@centralpachamber.com)

# Breakfast Briefing



Thank you to everyone who joined the Central PA Chamber for its last Breakfast Briefing of 2022 in December. It's not as dramatic as it sounds, because the Chamber holds a Breakfast Briefing at its location every month of the year! This particular one was sponsored by One Focus Property Management. Leasing Agent Kristin Leet told the crowd how One Focus can handle all your property rental needs. Learn more at [www.onefocuspm.com](http://www.onefocuspm.com). Breakfast Briefings are a great way to network and meet like-minded business people and non-profit leaders. Register to attend at [www.centralpachamber.com/events](http://www.centralpachamber.com/events).

## Good People Installing Trust On Time

COMMERCIAL AND RESIDENTIAL GLASS EXPERTS



UNITED  
PLATE  
GLASS

[upgpa.com](http://upgpa.com) • 570-286-6791  
4762 State Route 890  
Sunbury, PA 17801

# Legislative Event speaker announced

WATSONTOWN – For the first time, in-person, Congressman Dan Meuser, representing the new PA-9, will address local business and community leaders at the Central PA Chamber’s first Legislative Breakfast of 2023.

After the district realignment this year, U.S. Rep. Meuser now represents a large number of Central PA Chamber members.

While topics have yet to be announced, there will be plenty to talk about with the new Congress and how it impacts the Central PA region.

The cost to attend the Legislative event in the Watson Inn’s Moon Room is \$20 for Central PA Chamber members and \$25 for non-members.

Registration includes a breakfast buffet and the opportunity to network with around 100 (or more) other business and community leaders.

Sign up by Feb. 10 at [www.centralpachamber.com/events](http://www.centralpachamber.com/events). This Legislative Event is sponsored by Pennsylvania College of Technology Workforce Development. Learn more at: [www.pct.edu/business/workforce-development](http://www.pct.edu/business/workforce-development).

## “Election” (from page 3)

“The words of gratitude at the December board meeting were tearful as I’ve come to build a great friendship with directors Hertzler, Pinchak and Ross. My appreciation to their steadfast support during my tenure is priceless, and I’m certain those relationships will remain strong.”

She added she’s pleased to have McDonald return for a new term, citing her wealth of knowledge and dedication to the organization.

“She is one of the most selfless and humble women I know,” Aikey said.

And, naturally, the Chamber chief is excited to see how the new board members start their terms.

“I’m eager to see the connections made, each of them getting to know each other, and how they are so willing to dedicate their time and energy to the efforts of the Central PA Chamber.”

The Central PA Chamber thanks all nine of this year’s board candidates, everyone who made nominations and the board’s nominating committee. The committee included: 2022 Board Chairman Rob Jones of the Milton Historical Society; 1st Vice Chair Skyler Herb of Skyworks Equipment Rental, Harrisburg; Treasurer Lennea Brown of Heritage Springs Memory Care, Lewisburg/Montoursville; McDonald; and Director Alison Hall of The UPS Store, Lewisburg.

A total of 697 votes were tallied from among 161 ballots submitted by an organization’s “primary contact” or “voting member”. The Central PA Chamber used a new election service this year - ElectionBuddy - and saw a 118 percent increase in voter participation over last year.

One board seat was vacated at the end of summer with the hiring of Ryan Workman as the Chamber’s Business & Education Coordinator. That is why there are four new additions to the board with only three stepping off.

A reorganizational meeting to determine the four 2023 board officers, who make up the Executive Committee, will take place just prior to the first board meeting of the year on Thursday, Jan. 12.



Andrew Hertzler



Chris Pinchak



Todd Ross



welcomes


**Congressman Dan Meuser (PA-9)**



**7:30 to 9 a.m. Friday, Feb. 17 @ Watson Inn, Watsontown**

*(Topics to be announced at a later date)*

**Central PA Chamber Members - \$20; Non-Members - \$25**  
**Register @ [www.centralpachamber.com/events](http://www.centralpachamber.com/events)**

Premier Sponsor:  **Workforce Development**

# LIVE

# HIGH SCHOOL

# SPORTS

## and Original

## Local Programming

Exclusively on Service Electric Cablevision

Channels 508 HD | 8 SD | On Demand



[secv8.com](http://secv8.com)

## Who Represents You?

*Where were you born?*  
Staten Island, NY

*Favorite vacation spot?*  
Scotland

*Have any hobbies?*  
Knitting and baking

*A fun fact about yourself?*  
I have a weakness for Jelly Belly jelly beans.

*What is your favorite Chamber memory?*  
There are so many - from ribbon cuttings at my store locations to Inside Jobs Tours.



**Alison Hall**  
Community Member

**Director**  
Term ending 2024



# Members Recognized

## Herbert, Rowland & Grubic

LEWISBURG - Herbert, Rowland & Grubic, Inc. (HRG) received the top prize at the ESOP Association's Annual Awards for Communications Excellence at the end of last year in Las Vegas. The award, for Total Communications, recognizes HRG's efforts to promote the benefits of employee ownership to their employees and to the public. The company's human resources director Laura Williams and ESOP Advisory Committee chairperson Raj Moola accepted the award.

HRG is committed to an open and honest exchange of ideas with their employee-owners at all levels of the organization. Leadership shares a wealth of information about the company's performance and goals in monthly e-mails from the president, videos, livestream announcements, and quarterly reports from the chief financial officer. But, most importantly, they listen, too. Employee-owners can offer their input through a suggestion program, online surveys and town hall meetings. They also can play an advisory role on the ESOP committee or OPT IN team (which focuses on operational innovations). The company promotes its ownership culture with an annual Valuation Day celebration each June and activities throughout ESOP Month each October, both of which are highlighted on social media.

HRG previously won the ESOP Association's Annual Award for Communication Excellence in 2018 for "Employee Ownership Marketing." They were also named ESOP Company of the year by the Pennsylvania-Delaware chapter of the ESOP Association in 2019.

## PA Business Central

STATE COLLEGE - Now more than ever, the rising generation of business leaders are providing a shining example of drive and determination necessary to adapt and succeed in a rapidly changing economic environment, according to PA Business Central in its recent issue highlighting 2022's Foremost Under 40.

This year's 38 honorees were selected from the many nominations sent to PA Business Central in its 23-county readership. A listed have made a positive impact on the Central Pennsylvania business community by consistently moving their business forward, adapting to major changes in their personal and professional life and giving back to the community through volunteering or mentoring.

Among the Central PA Chamber members featured were: Leighton Lutze, Founder/CEO of Evergreen Cleaning Co.; Chenelle Thomas, Director of Operations for Clearview Asset Protection; Marie Wagner, Owner of Marie Wagner LMT; James Haywood, Senior Project Coordinator for Intrada Technologies; Joey Lye, Founder/Chief Empowerment Officer of Joey Lye OLY LLC; and Jennifer Lehman, CEO of Sunset Staffing LLC.

Read more, here: [www.pabusinesscentral.com/foremost-under-40](http://www.pabusinesscentral.com/foremost-under-40).

## Evangelical Community Hospital

LEWISBURG— Evangelical Community Hospital welcomes new doctors to its staff.

As neurologists, Drs. Kelly Baldwin and Christopher Cummings specialize in diseases and treatment of the nervous system. Both physicians are practicing at Neurology of Evangelical. As a critical care physician, Dr. Katherine Patil specializes in serious and critical illnesses and injuries. She joins the Hospital's Critical Care Group in caring for patients on the Critical Care Unit and is also available for inpatient pulmonary consultations and bronchoscopy. Dr. Baldwin comes to Evangelical from Maine Medical Center, Port-

land, where she was a Neurology Hospitalist. In addition to her role as a neurologist, Dr. Baldwin will serve as the Medical Director of Medical Education at Evangelical, which oversees student education and advancement of shadowing and clinical education programs at the Hospital.

Dr. Cummings comes to Evangelical from Maine Medical Partners – Neurology, where he served as an attending Vascular Neurologist and the Stroke Clinic Director.

Dr. Patil comes to Evangelical from Pottstown Medical Specialists, where she served as a Pulmonary, Critical Care, and Sleep Medicine attending for ten years in the Philadelphia area. She also currently serves as a teaching attending in Critical Care Medicine and Pulmonology at Conemaugh Memorial Medical Center.

In other news, Phoebe Faden, LPN, was presented the DAISY Award in November, presented to a deserving nurse who exemplifies clinical expertise and compassionate care and is recognized as a role model in the nursing community.

Faden was nominated for the award by co-worker, Jennifer Sullivan, RN, BSN, who heard about Faden going above and beyond for a patient.

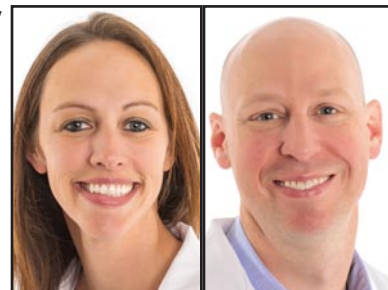
"The story I want to recognize her for is that of an elderly patient of hers who was sad and depressed. This patient lives in a nursing home and said that she did crafts to keep herself occupied there. Through talking and listening with her patient, Phoebe one day brought in an entire bag of crafts for her patient to make projects with. The patient made a sign for Phoebe's locker and Phoebe made the patient a small, hooked rug." In talking about the act, Faden told Sullivan it was her pleasure and joy to be able to do this for her patient and that it was a good reminder to listen to what the mind and body need to be well.

Faden has been an Evangelical employee since September 2021 when she began as an LPN on the Intermediate Care Unit. Nominations for the DAISY award can be made by patients, patient family members, colleagues, and providers. If an Evangelical Community Hospital nurse has displayed extraordinary clinical expertise and compassion, visit [www.DAISYnomination.org/ECH](http://www.DAISYnomination.org/ECH) and fill out a nomination form.

## SEDA-COG

WASHINGTON - The International Economic Development Council (IEDC) announced the 2022 Entrepreneurship Development Professional (EDP) credential recipients at the end of last year, which included Betsy Kramer, Revitalization Coordinator for SEDA-COG.

The EDP designation requires candidates to have two years of full-time experience in economic development, complete the necessary education requirements and pass the certification examination. It is designed for professionals who work with entrepreneurs and



Dr. Kelly Baldwin



Dr. Christopher Cummings



Dr. Katherine Patil



Phoebe Faden



Betsy Kramer

small businesses as well as those that support them via programs, networks and approaches that foster small business and entrepreneurial growth. The 2022 program courses and examination were presented in an entirely virtual format.

"IEDC's EDP credential has prepared this next class of professionals to serve and advance their communities. They have demonstrated great dedication and hard work through the completion of the program. This sets the foundation for great success in the future," said IEDC President and CEO Nathan Ohle.

The IEDC is the world's largest membership organization for economic development professionals. Economic developers promote economic well-being and quality of life in their communities by creating, retaining, and expanding jobs that facilitate growth and provide a stable tax base. From public to private, rural to urban, and local to international, our members represent the entire range of economic development.

In other news, board officers for SEDA-COG were elected at the Dec. 7 public meeting.

The 2023 SEDA-COG Board of Directors' officers will be Centre County Commissioner Mark Higgins, President; Lycoming County Commissioner Scott Metzger, First Vice President; Snyder County Commissioner Joe Kantz, Second Vice President; Larry Reisinger of Perry County, Secretary; and Dennis Van Benthuyzen of Snyder County, Treasurer.

The 2022 officers were Mifflin County Commissioner Kevin Kodish, President; Centre County Commissioner Mark Higgins, First Vice President; Montour County Commissioner Ken Holdren, Second Vice President; Larry Reisinger of Perry County, Secretary; and Dennis Van Benthuyzen of Snyder County, Treasurer.

Higgins said he is looking forward to serving as board president in the new year.

"Serving as board president for 2023, I look forward to continued service with our dedicated board of directors and our professional staff. Together, we will continue to administer existing programs and identify new opportunities to encourage and support long-term economic growth through our local small business community.

These efforts serve to strengthen the quality of life throughout our 11-county SEDA-COG region."

SEDA-COG Executive Director Kim Wheeler thanked outgoing board President Kevin Kodish for his service to the agency.

"Board President Kodish has led the SEDA-COG Board through some unprecedented times. We deeply appreciate his commitment and guidance to serving this region and ensuring the Board is attentive to critical matters of importance for our future," Wheeler said. "We are looking forward to seeing what else we can accomplish in the new year with Commissioner Higgins at the helm."

The SEDA-COG board is a 22-member, county-based policy board representing both public and private sectors.

And, SEDA-COG announces that Steven Beattie is the new Ex-

ecutive Director of the SEDA-COG Joint Rail Authority (JRA).

Beattie began his career as a project manager for area engineering consulting firms, including Herbert, Rowland & Grubic, Inc., where he managed the Lewisburg office. He later joined the Larson Design Group where he worked in a multitude of roles: Site/Civil Engineering Senior Project Manager, Retail Design Senior Project Manager, and the Director of Sales and Marketing. He most recently served as the Community



Steven Beattie

Development/Grant Manager for the Borough of Lewisburg. Since 1998, Beattie has served numerous roles for engineering consulting firms in the SEDA-COG region. Throughout his career he has served municipal, commercial, industrial, and institutional clients managing projects through the design, funding, and construction phases. His latest accomplishment includes leading the effort to secure over \$3.4 million in funds for the Borough of Lewisburg over an 18-month period.

In addition, Beattie has obtained various licenses and certifications throughout the course of his career, including being a Notary Public, a Licensed Landscape Architect, and having received the Advanced Emergency Certification for the role of municipal emergency management coordinator.

Beattie's major goals as Executive Director include preserving and expanding upon the legacy the JRA has built in our surrounding communities.

See "Members Recognized" (on page 18)



Pictured are 2023 SEDA-COG Board Officers, from left: Joe Kantz, Mark Higgins, Larry Reisinger and Scott Metzger. Not pictured: Dennis Van Benthuyzen.

## How about a "new you" in the New Year!

**1/2 Price** PhotoWhere Photography

# Headshots!

For only \$50\*, have a 10-minute session with photographer Ron Aunkst of PhotoWhere Photography and receive at least five images on a white background, suitable for a wide-variety of promotional purposes.

\*Half of the proceeds are being donated to the Central PA Chamber!

**8 to 11 a.m. Friday, Jan. 27 @** **CENTRAL PA**  
CHAMBER OF COMMERCE

**Registration required @**  
[centralpachamber.com/events](http://centralpachamber.com/events)

# Ribbon Cuttings



Congratulations to Health By Design Wellness Center Lewisburg at 115 Farley Circle, Ste. 202! On Dec. 20, the Central PA Chamber helped the new business celebrate its recent opening with a ribbon cutting ceremony. 'We're very excited to be a part of the community,' said co-owner Shahryar "Sha" Vahabzadeh, alongside of his business partner, Maria Schramm. 'Hopefully, we'll bring some wellness to those around us.' According to the owners, they provide quite a few non-invasive treatments at their wellness spa, including: Red Light Therapy, IV Therapy, Infrared Sauna, Botox, Skin Care Treatment and Hair Removal. Find more at [www.healthbydesignwellnesscenter.com](http://www.healthbydesignwellnesscenter.com). Teaming up for the ribbon cutting are co-owners Vahabzadeh and Schramm, as well as her daughter, Layla. They are joined by, from left: Tea Jay Aikey, Central PA Chamber President & CEO; Ashley Parrish of First Commonwealth Bank and a Chamber Board Member; state Rep. David Rowe (R-85); Alison Hall, Chamber Board Member; Amber Amato de Guerrero of the Small Business Development Center at Bucknell University; Ginnetta Reed of T-Ross Brothers Construction and Chamber Board Member-elect; and Brad Lawton of Lawton Insurance Agency, also a Chamber Board Member.

# Safety first at UPG



Safety in the construction industry is a paramount concern, and the team at United Plate Glass, Sunbury, have been doing it right! Over the summer, UPG reached an incredible milestone - five years of safety with no accidents. Moreover, they achieved this landmark during a time when they've been busier than ever. From 2017 to 2022, the company had a 900 percent increase in revenue. 'No matter how much we grow, our core principles will remain,' said President Nate Lawrence, pictured above in the middle with his team. 'We're good people, installing trust, on time. A lot of guys start to lose something when they get too big, but we want to make sure we retain our values no matter what. That includes safety, customer service, and quality.' More recently, in November, the UPG team embarked on a fun-filled day to celebrate their accomplishments. It started with breakfast on a limo bus as they traveled to a local go-kart track for some friendly competition. Learn more at [www.upgpa.com](http://www.upgpa.com).



This past fall, Dan Myers, Financial Advisor for Edward Jones in Lewisburg (second from left), was in State College to support The Walk to End Alzheimer's. He was joined by his Senior Branch Office Administrator, Mary Wagner, and a fellow office in Williamsport. Collectively, the region raised more than \$9,000 to support Alzheimers research.

## Sales & Service

- ◆ Fire Extinguishers
- ◆ AED
- ◆ Emergency Lighting
- ◆ Backflow Water Testing
- ◆ DEP / OSHA / Extg Training Classes
- ◆ Automatic Fire Suppression Systems
- ◆ Rescue Equipment
- ◆ Portable Gas Detection
- ◆ Fire Equipment
- ◆ Breathing Air Compressors
- ◆ SCBA
- ◆ Fixed Gas Detection Systems
- ◆ Confined Space
- ◆ CO<sub>2</sub> Fire Protection Systems



[www.susquehannafire.com](http://www.susquehannafire.com)

2122 Main Street  
P O Box 209  
Dewart, PA 17730

**800-822-2105**



# SUN-Tech awarded funds

NEW BERLIN - SUN Area Technical Institute (SUN-Tech) was recently awarded an Appalachian Regional Commission (ARC) grant in the amount of \$85,088 for Mechatronics training equipment, according to SEDA-COG.

SUN-Tech, which serves Snyder, Union, and Northumberland counties in Central PA, recently added a Mechatronics Program to its list of course offerings.

There is a need for skilled and trained personnel in the Mechatronics field in the region. By adding a mechatronics program to SUN-Tech, and enhancing the program with industry standard equipment, students access to equipment and technology used in the field for Mechatronics training will translate into learned job skills to fill high priority positions in the region. These positions can earn \$40,000 entry level, and \$60,000 for experienced level, and are expected to see an increase in employment of around 8 percent by 2028.

The curriculum for this course will cover: Electrical Systems, National Electrical Code, Robotics, Circuits, Programmable Logic Controls, Electric Motor

Controls, Pneumatics, Mechanical Power Transmissions, Fluid Power Systems, Troubleshooting and Repair.

Jobs in the mechatronics field include a variety of occupations which include engineers, mechanical engineers, hydraulic specialist, pneumatic specialists, PLC troubleshooting, maintenance managers, maintenance technicians, industrial maintenance automation technical manager, and plant managers.

SEDA-COG's Betsy Lockwood, Director of Project Development and Grants, submitted the ARC application for the equipment on behalf of SUN-Tech. Regarding the benefits of the grant, Lockwood said, "Considering the rapidly growing field of mechatronics, it was imperative that our area have access to the latest and most advanced equipment, curriculum, and training aids to expand and strengthen skill development and ensure long-term employment success in central PA. I am thrilled for the innovation opportunity this provides SUN-Tech and for the adult learners and recent high school graduates who will be able to take part in this program."



In November, Aspire Wealth Group, Montoursville, supported The MSG Sean Thomas Foundation, run by the family of Master Sgt. Sean Michael Thomas, who was killed March 27, 2007, while bravely serving our country in Iraq. The foundation was formed in 2009 with a mission to support military members (past and present) and their families during times of need in Lycoming, Clinton, and Union counties. In addition, the Foundation provides annual monetary awards to nominated graduating seniors who have selflessly committed to joining the military. The Foundation has awarded dozens of area students thus far. Presenting the check is Wealth Advisor Mitchel Thomas, a nephew of the late MSG Sean Thomas.

## 'Capped' with success



Camp Susque, a non-denominational Christian camp in the mountains of Lycoming County, near Trout Run, exceeded its lofty goal of raising \$75,000 during its Campfire Cappuccino fundraiser during the month of November. The non-profit seeks sponsors for each cup sold at Alabaster Coffee Roaster & Tea Company in Williamsport.

During the fundraiser, Peter Swift, executive director of the camp, stopped in at the Chamber office for the staff to give the unique concoction a try. 'We had thought that our goal of 750 cups seemed a little aggressive, but we blew that out of the water,' Swift told us recently.

Altogether, a total of 1,049 cappuccinos were sold. Swift is very grateful to all sponsors and everyone who stopped in to buy a cup, or two, or three. Pictured is the Central PA Chamber team with Swift. From left: Jeff Shaffer, Communication Director; Swift; Ryan Workman, Business & Education Coordinator; Jessica Beaver, Finance & Membership Director; and Tea Jay Aikey, President & CEO.

## Looking to hire or even be hired?



Visit [www.centralpachamber.com](http://www.centralpachamber.com) and click on

**"Job Opportunities" under the "Economic Development" tab.**

**Want to post a job your business or organization has available?**

**E-mail [jshaffer@centralpachamber.com](mailto:jshaffer@centralpachamber.com).**

# Business & Education

## Raising the Board revamping

MILTON – Raising the Board (RtB), a program designed to raise the skills and confidence of current and would-be non-profit board members, will be undergoing some exciting changes in 2023.

The first class of RtB was held four years ago and has had 44 graduates to date, representing dozens of non-profits across the Central PA region.

Traditionally, an RtB session has been held over four consecutive weeks, covering subject matter most important for a non-profit board member to know and understand. The subjects are broken down into four focus areas, including: Practice, Act,

Apply and Connect. While this teaching method has proven valuable for many, organizers understand that there could be some time constraints for those interested in attending RtB.

Chamber staff and class presenters, called “mentors”, will meet at the beginning of the year to determine a class schedule that increases participation, while still providing the same level of content. Stay tuned for more details!

Learn more about RtB’s subject matter and mentors by visiting [www.centralpachamber.com/rtb](http://www.centralpachamber.com/rtb). Interested in attending? Call 570-742-7341.



The Central PA Chamber congratulates Keith Foust of Susquehanna Fire Equipment Company, Kerry Ann Colville-Wood of Hummel Station and Annette Welch of MC Federal Credit Union, who graduated from Raising the Board in December! Bookending them are Ryan Workman, the Central PA Chamber's Business & Education Coordinator and RtB program director, and Lauren McDonald of The Wealth Factory, who is a Chamber board director and RtB mentor. Not pictured are mentors Rob Jones of Milton Historical Society, also a Chamber board member; and Loni Martz-Briner of North Shore Railroad. RtB will be undergoing some changes in 2023, which should allow even more to participate.

## Dream It, Be It



Last fall, high school girls and area professional women came together at Susquehanna University for a ‘Dream It Be It’ Career Support event. The program, sponsored by Soroptimist International, is designed to empower young women and provide enrichment and career exploration during a day-long event. The conference is intended for girls who demonstrate great potential but lack the resources or support to plan meaningfully for their futures, or who otherwise face barriers to success. Throughout the day, roughly 50 students from school districts in Snyder, Union and Northumberland counties participated in sessions regarding exploring careers, financing higher education, career development programs, building resilience and confidence and balancing stress; as well as sitting and speaking with local professional women who serve as table mentors throughout the event. It featured multiple Central PA Chamber members, serving as table mentors and speakers. Among the speakers were: Elba Arenas, president of MC Federal Credit Union; Angela Hummel of Angela Hummel Consulting; and Rose Weir, a trauma therapist with Transitions of PA.

Need some training that fits your busy schedule?

We offer hundreds of online and on demand classes starting at \$10.00!

[Learn more @ centralpachamber.com](http://centralpachamber.com)

Featuring:

- \*Accounting
- \*Marketing
- \*Human Resources
- \*Leadership
- \*Safety
- \*Many More!



Questions? Call 570-742-7341.



# First-hand at Fabtex

# Ryan's Writings



## New Year opportunities

Welcome to 2023. The New Year brings us a moment to change our calendars, priorities, obligations, and even our lives. You've probably been asked to make a "New Year's resolution". These often range from a diet or exercise regimen to building a new relationship or asking for that promotion you've been mustering the courage for all year. I won't ask you to make any such commitment, but if you are looking for a challenge or chance to learn and grow this year, the Central PA Chamber may have just the right opportunity for you!

The Central PA Business & Education Association has an ambitious agenda for 2023. Our Steering Committee had its first, and very instructive, meeting in November. The "B&E" Association is working to relaunch and refresh to magnify its impact and reach for area job seekers and creators. Our aim is to become the area's central hub for pairing students and apprentices with the training resources and skills education options for regional employment needs. Likewise, our members in need of finding new recruits will be able to partner and influence the development of skills and potential workers. There is an almost overwhelming number of resources available, but both those in need of work and those in need of workers don't always make the necessary connections. I will keep you updated on our progress throughout the year.

So many of our members bring their care and attention to organizations that positively impact our community. Raising the Board is a course developed here at the Central PA Chamber to help hone the skills of those who serve or wish to serve on a non-profit board. I was grateful to complete this course myself during the summer of 2021. We recently completed another class and there will be more opportunities to participate in upcoming classes.

The Seminar & Training Series calendar is filling with presentations for 2023. Our membership was polled last year, and I have a list of topics and information you all have expressed interest in receiving instruction and demonstration. First up in January, we heard from one of our newer members, Honest Jobs, about how they can help you find potential new employees from the largely, un-tapped re-entry workforce. Then we will have presentations on local apprenticeships, QuickBooks, and even a Chamber 101 seminar. There will be no chance for you to not get the most out of your membership.

Please, check the events calendar on our website and register for these New Year opportunities. Hopefully one of these can satisfy your resolution!

Ryan Workman  
Business & Education Coordinator  
[workman@centralpachamber.com](mailto:workman@centralpachamber.com)



In November, Fabtex Inc. hosted a group of junior-high students from the Warrior Run School District. The company in Danville is taking part in a statewide project pairing local schools with local manufacturers. The objective is to let students know what kind of careers are available in areas of manufacturing while combating the stigma of a factory being a 'loud, dirty, monotonous dead-end job'. Fabtex showed students the various types of work and skills it takes to support a facility while concentrating on the manufacturing aspect. They heard all about the work it takes to meet customer expectations. Video was taken and the students will edit it to tell a story to be entered into the contest for voting by the manufacturing community. It begins in regions with the possibility of advancing to the state finals. Fabtex officials said enjoyed the opportunity to educate the students about their industry. They were even provided with a hands-on opportunity to make their own pillows.



Learn more about "B&E" at [www.centralpachamber.com](http://www.centralpachamber.com) under the "Business & Education" tab!

# Jessica's Jottings

## New Year, new you

It's a New Year and could be a new start for your business or organization!

If you are reading this column, it means you have access and interest in the Central PA Chamber's publications already. Just imagine if your business/organization was a member - you could be in front of many readers just like yourself! Becoming a member of the Central PA Chamber of Commerce is simple and can be done in three easy steps!

Step 1: Fill out the application. Our membership application can be found on the Chamber website

([www.centralpachamber.com](http://www.centralpachamber.com)) by clicking the "Join Now" button, or you can ask me for a paper application and do it the "old school" way. The information on both forms is the same, and it just comes down to what you prefer. You can also give me a call, and I can fill out the form for you! Once your application is filled out, you are ready for step 2.

Step 2: Pay the membership dues. The Central PA Chamber of Commerce's dues schedule is based on the number of employees with your business/organization. We also offer a discounted rate for new members in their first year if they belong to another like organization, such as another Chamber of Commerce or to any of our partnering organizations. To see a list, be sure to visit our website. We also offer membership to students and retired friends as well! Payments for membership can be made by cash, check or credit card.

Step 3: Start using your benefits! Once we receive your application and payment, you are officially a member of the Central PA Chamber of Commerce! We will send you a welcome packet with information for you to check out right away, and we will also send an e-mail to all our current members welcoming you to the Chamber family. Now you can start taking advantage of the many benefits we offer to our members and start the path to growing your business/organization!

Becoming a member of the Central PA Chamber of Commerce is as simple as 1-2-3! We are here to provide our members with service that is easy to use and gets your message out to the masses in the most effective way possible. If you have any questions, or want to learn more, I encourage you to check out our website. Feel free to give us a call or stop in our office to meet the team and have all your questions answered.

Thank you for reading and I hope to hear from you soon!



*Jessica*

Jessica Beaver  
Finance & Membership Director  
[jbeaver@centralpachamber.com](mailto:jbeaver@centralpachamber.com)

Learn more @  
[www.centralpachamber.com/membership/benefits](http://www.centralpachamber.com/membership/benefits)

## "Members Recognized" (from page 13)

### Camp Mount Luther

MIFFLINBURG - About 110 outdoor ministry professionals, board members, and others gathered for the annual Lutheran Outdoor Ministry Conference.

The event was held in November at The Riverside Hotel in Boise, ID. One of the participants was the executive director from Camp Mount Luther, Chad W. Hershberger of Mifflinburg.

Under the theme of RIVER, participants explored rest, imagination, vision, and emerging renewed to go out and continue to minister to those in their contexts. The conference schedule was built around lots of time for reconnecting with colleagues, share ideas, and refocus in changing times.

During the conference, Lutheran Outdoor Ministries, a non-profit organization, met in business sessions. LOM is an independent association of outdoor ministry organizations, professionals, board members, businesses and students connected to Lutheran camping, conference, and retreat centers. Camp Mount Luther is a member of LOM.

And, in other news, the American Camp Association (ACA) has announced that Camp Mount Luther has received ACA Accredited Camp Status following their site visit this past summer. The Keystone Regional Local Council of Leaders of ACA voted to re-accredit the camp this fall.

"ACA accreditation means that Camp Mount Luther submitted to a thorough review of its operation from staff qualifications and training to emergency management and complied with the highest standards in the industry," said Nancy Hartmann, ACA National Standards Commission. "Parents expect their children to attend accredited schools. They also deserve a camp experience that is reviewed and accredited by an expert, independent organization." Every three years, a team of trained camp professionals visit camps on behalf of ACA to observe the camp while in session and compare its practices with the highest standards of camping in America. Camp Mount Luther has been accredited by ACA since 1989. Accreditation is important because that status shows that Mount Luther is committed to provide programs and facilities that are safe for those campers who come to the camp. For more information, visit [www.campmountluther.org](http://www.campmountluther.org).



Chad Hershberger

**transitions**

SAFER FAMILIES. SAFER COMMUNITIES.

**COMPREHENSIVE CRIME  
VICTIM SERVICE CENTER**

**24-Hour Crisis Hotline**

**800-850-7948**



[www.transitionsofpa.org](http://www.transitionsofpa.org)

# Going Gold raises over \$15k in 2022

DANVILLE - During September, a number of local businesses, organizations and communities joined together to “Go Gold,” raising awareness about pediatric cancer and \$15,750 to support the ThinkBIG Pediatric Cancer Fund.

The 2022 Going Gold Committee kicked off a month-long calendar of events with a special outdoor event held on Aug. 28 at Hess Field, Danville. In addition to a lineup of entertainment, including: Woody Wolfe, Kat Holdren, Dey Street Band, Iron Ukulele Benders, Frank Wicher and AC Soul Medicine, attendees enjoyed food trucks, a special beverage section supported by Bull Run Tap House, Marley’s Brewery & Grille, Matty’s Sporthouse Grille, Old Forge Brewing Company, Rock God Brewing Company and Rusty Rail Brewing Company, as well as a number of family activities.

Nearly 15,500 children in the United States are diagnosed with cancer every year. ThinkBIG is dedicated to minimizing the stress families battling pediatric cancer experience, by providing financial support for everyday cost of living expenses and unpaid medical bills. Since 2014, this organization has allocated over \$1 million to help local families battling this disease.

A number of events, including an online T-shirt sale were held. Covered Bridge Brewhaus, Shamokin; Old Forge Brewing Company, Danville; Union Cellars, Lewisburg; and Watson Inn, Watsonstown, each hosted awareness events. Old Forge Brewing Company, Danville, was not only instrumental in helping to organize the outdoor event, but they also continued a special tradition, collaborating with Marley’s Brewery & Grille, Bloomsburg, to brew Gold Dust Pale Ale. Old Forge Brewing Company donated \$1 per pint of this special ale sold throughout September to ThinkBIG.

Going Gold also received support from the following businesses/organizations this year: Bason Coffee Roasting, Danville; Geisinger Medical Center, Danville; Weis, Danville; and Montour Area Recreation Commission (MARC), Danville.

In 2015, Woody Wolfe approached Old Forge Brewing Company and Service 1st Federal Credit Union and asked, “Why not go gold?” Going Gold soon grew into a month-long awareness effort. Each year, support continues to expand as additional communities and organizations join the fight against pediatric cancer. This was the eighth consecutive year for the Going Gold initiative.



Going Gold 2022 raised awareness and \$15,750 to support ThinkBIG Pediatric Cancer Fund. Pictured are, from left: Bob Stoudt, Director, Montour Area Recreation Commission; Mark Stankiewicz, Managing Director, ThinkBIG Pediatric Cancer Fund; Colleen Phillips, Vice President Marketing, Service 1st; Damien Malfara, Owner, Old Forge Brewing Company and Bill Lavage, President/CEO, Service 1st.

To date, this initiative has raised over \$97,250. For more information about Going Gold, visit [www.service1.org](http://www.service1.org) or call Service 1st Federal Credit Union at 800-562-6049.

*We want to hear your good news!  
To appear in It's Your Business,  
e-mail  
[jshaffer@centralpachamber.com](mailto:jshaffer@centralpachamber.com).*



Mifflinburg Bank & Trust employees recently donated their contributions for casual Fridays for a month to Kelsey’s Dream. Pictured are, from left: Shelby Hackenberg, Community Relationship Manager for Mifflinburg Bank & Trust; and Tina Kuhns, Volunteer/CEO of Kelsey’s Dream. Learn more at: [www.KelseysDream.org](http://www.KelseysDream.org).

**Our Customers.  
Our Community.  
Our Mission.  
Since 1948.**

**SERVICE ELECTRIC**  
CABLEVISION

**secv.com | 800.522.2389**

# BY THE NUMBERS...

Our Facebook page had over **102,000** page reaches in 2022, a **57%** increase over 2021!

In 2022, there were more than **56,000** page views on our website, a **22%** increase over 2021!

We started 2022 with **540** members and finished with **573**, which reflects an **87%** retention rate!

## Join us at these upcoming events!

### BREAKFAST BRIEFING

7:30 to 9 a.m. Friday, Jan. 20 @  
the Central PA Chamber of Commerce,  
30 Lawton Lane, Milton.

**Members - FREE; Non-members - \$7**  
(Registration is Required)

Sponsored by:



### CENTRAL PA BUSINESS & EDUCATION ASSOCIATION Seminar & Training Series

Advance Central PA's Apprenticeship Programs

10 a.m. to 12 p.m. Tuesday, Jan. 24  
In-Person or Online via Zoom

Cost: \$10 Member / \$15 Non-Member

Register: [www.centralpachamber.com/events](http://www.centralpachamber.com/events)

Presented by:



### CENTRAL PA CHAMBER OF COMMERCE INSIDE JOBS

11 a.m. to 1 p.m. Wednesday, Jan. 25

@ Sync Solutions, 48 A St., Northumberland

- A behind-the-scenes tour
- Learn about Control Systems for A/V, corporate meeting spaces & video distribution
- Lunch provided

Featuring:



Inside Jobs offers members a chance to tour facilities of fellow businesses/organizations.  
Find tour details and register @ [www.centralpachamber.com/events](http://www.centralpachamber.com/events).

Find the latest event information @

[www.centralpachamber.com](http://www.centralpachamber.com)  
Click on "Events"



TRB  
T-ROSS BROTHERS  
CONSTRUCTION INC.

Building for the Future

Building with honesty and integrity.  
[www.trossbrothers.com](http://www.trossbrothers.com) | 570-524-6411



BEND-FAB  
STANDING SEAM METAL ROOFING

Eco-friendly metal roofing.  
[www.bend-fab.com](http://www.bend-fab.com) | 570-522-0042



R  
ROSS CUSTOM HOMES

Turning dreams into reality.  
[www.rosscustomhomes.com](http://www.rosscustomhomes.com) | 570-524-6411