

It's Your BUSINESS

www.centralpachamber.com

Volume 7, Issue 8 - August 2022



BOOM!

SUPER SPEAKER SELECTED.

PG. 3

POW!

CENTRAL PA

CHAMBER OF COMMERCE

Board of Directors

Rob Jones - Chair **Skyler Herb - 1st Vice Chair**

Milton Historical Society Skyworks Equipment Rental

Chenelle Thomas - 2nd Vice Chair **Lennea Brown - Treasurer**

ClearView Asset Protection Heritage Springs Memory Care

Genie Bausinger **Will Greiner**

Milton Regional Sewer Authority Strong Spas

Alison Hall **Andrew Hertzler**

The UPS Store XW Construction

Nathan Lawrence **Brad Lawton**

United Plate Glass Lawton Insurance Agency

Lauren McDonald **Ashley Parrish**

The Wealth Factory First Commonwealth Bank

Chris Pinchak **Todd Ross**

Heaven's Best Carpet Cleaning T-Ross Brothers Construction

Ryan Workman **E. Terry Baldwin - Solicitor**

Susquehanna Computer Innovaions Baldwin & Baldwin

Staff

Tea Jay Aikey - President & CEO

tjaikey@centralpachamber.com

Jeff Shaffer - Communication Director

jshaffer@centralpachamber.com

Jessica Williams - Finance & Membership Director

jwilliams@centralpachamber.com

The Inside Scoop



This year's Annual Meeting theme is really taking me back to my younger years.

As many of you can surely relate, growing up there wasn't nearly as much entertainment available as compared to today. So, buying a comic book to keep her grandson entertained was one of the things my grandmother did from time-to-time.

My imagination has always run wild, so it was fascinating to spend time in an alternate world now and then. I probably haven't picked up a comic to read in the last 30 years, but what I seem to recall most is that despite being superheros and the saviors of their universes, they still had their own problems, just like everyone else. We all encounter personal issues and our own "kryptonite", if you will.

Strength, which takes on many forms (not just lifting cars) is something we should all spend time growing upon. We've all learned how valuable strength can be over the last couple of years, to adapt, overcome and thrive. We did this both as individuals and as a community. What you learned then can and should be still helpful to you now. Your Central PA Chamber of Commerce always wants its members to be in the best position they can when the antagonist shows itself. This world will never be perfect, so take the time when you can now to better yourself, which often has a multiplier effect on the people around you.

We hope you can join us for our Annual Meeting coming up this fall on Oct. 27. Read our cover story for more details and meet this year's keynote speaker - Olympic medalist Joey Lye!

There is so much more to see and read on these pages, too. We also have a speaker for our next Legislative Event. Turn to page 11. And, there is no shortage of member news, events and other celebrations. Enjoy the issue!

Jeff Shaffer, Editor
Communication Director

jshaffer@centralpachamber.com

The President's Club

Abe's Custom Woodworking	Mifflinburg Bank & Trust Company
Backyard Broadcasting of Pennsylvania	NESCO Resource
Century 21 Mertz & Associates	North Central Sight Services
ClearView Asset Protection	North Shore Railroad Company
Coldwell Banker Penn One Real Estate	On Fire Promotions
Contrast Communications	PenTeleData
Davis, Davis & Kaar	PPL Electric Utilities
Decal Dynasty	Raceway Mobile Storage
Evangelical Community Hospital	RE/MAX Bridges - Ann Hilliard
Fulton Bank	Riverwoods Senior Living Community
Green Ridge Graphics	Safeguard Business Systems
Heaven's Best Carpet Cleaning	Service 1st Federal Credit Union
Heritage Springs Memory Care	Service Electric Cablevision/SECVs
Hosterman Creative	Seven Mountains Media
i3 Point-of-Sale	Sunbury Broadcasting Corporation
iHeartMedia	Susquehanna Fire Equipment Company
Interaction Dynamics Group	Susquehanna Valley Limousine
Java Momma	T-Ross Brothers Construction
Jersey Shore State Bank	The Standard-Journal
La Primavera Italiano Ristorante	The UPS Store
Lawton Insurance Agency	The Wealth Factory
Lewisburg Pharmacy	TPS
LIVIC Civil	Unique Inspirations Limited
LMJJ Creative Property Solutions	Watsonstown Dental
MCPS of Central PA	Weaver Wireless Consultants
Meixell Diehl Insurance	

The President's Club is an exclusive sponsorship program created to prominently recognize companies that contribute to the Central PA Chamber over and above their annual membership investment. For more information, call 570-742-7341.

It's Your Business Deadlines

Below are upcoming *It's Your Business* due dates to help ensure your member information appears in IYB. Every effort is made to include information in a timely manner.

Note: Only paid advertisements are guaranteed.

**September Digital Issue
News & Ads due by Aug. 15**

**Fall Print Issue* (released end of September)
Ads & Flyers due by Sept. 2**

**October Digital Issue
News & Ads due by Sept. 16**

**November Digital Issue
News & Ads due by Oct. 14**

*The Central PA Chamber also publishes *IYB Quarterly* for each of the four seasons. Copies are available at public member locations across the region.

If interested in being a drop-off location, e-mail jshaffer@centralpachamber.com.

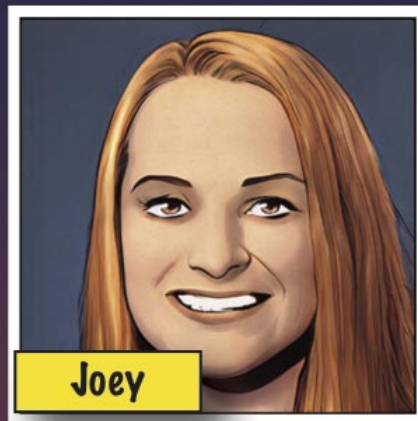
2022

ANNUAL MEETING



KEYNOTE SPEAKER
OLYMPIC MEDALIST
JOEY LYE

STARRING:



11:30 a.m. - 1:30 p.m. / Thursday, Oct. 27
Silver Moon Banquet Hall, Lewisburg

Visit: centralpachamber.com/events



FEATURING:



Meal/Venue Sponsor:



CENTRAL PA
CHAMBER OF COMMERCE

Strength Through Knowledge!



OLYMPIC MEDALIST TO SPEAK

LEWISBURG - This year's Annual Meeting will be amazing, incredible, fantastic, uncanny, and many other popular adjectives that adorn the covers of comic books!

Throughout this year, the Central PA Chamber has been encouraging its members that there is "Strength Through Knowledge". The more you know, understand and implement, the better off you'll be as we continue to navigate an ever-changing world. Everyone has been through a lot over the last couple of years, and now is the time to re-build your strength in many senses of the word.

This year's keystone speaker has shown tremendous strength, including on the world stage. Joey Lye, earned a bronze medal at the 2020 (postponed until 2021) Olympics in Tokyo, Japan, as a member

of women's softball for Team Canada. She now resides in Lewisburg and is Chief Empowerment Officer of Joey Lye OLY LLC. Her new venture delivers high performance consulting in the form of customized programming to take your business from good to great. Lye has also been on the world stage as a TEDx speaker, and it's just another reason why this Central PA Chamber member was selected to share the main message at the Chamber's largest event of the year, which will be held from 11:30 a.m to 1:30 p.m. Thursday, Oct. 27, at the Silver Moon Banquet Hall in Lewisburg. This venue has served the Chamber and its members well over the last several years, featuring Feast of Flavor Catering.

See "ANNUAL MEETING" (on page 11)



Quality Collision Repairs on
All Domestic & Foreign Cars & Trucks
Alignment Specialists • State Inspection
Towing & Rollback Service

47 Apple Street • Milton, PA 17847
Phone: (570) 742-9627

Davis, Davis & Kaar

Attorneys at Law

*Wills & Estate Planning * Real Estate*
*Family Law * Business Law * Personal Injuries *

37 N. Arch Street, Milton, PA
P.O. Box 319

Phone: 570-742-8777 Fax: 570-742-6155

New Members

Airiam

130 Buffalo Road, Ste. 103

Lewisburg, PA 17837

570-524-6894

andy.gritzer@airiam.com

Andy Gritzer - Account Executive

<https://airiam.com>

Airiam provides businesses with best-in-class managed IT and cybersecurity solutions. Airiam's managed IT services are scalable, agile and robust for all business types. With Airiam, businesses benefit from on-demand responses 24/7/365 and reduced workloads of in-house teams.

Moms4Liberty - Northumberland County Chapter

805 Elm St.

Watsonstown, PA 17777

570-940-9319

moms4libertynorthumberland@gmail.com

Clarissa Paige - President

<https://www.momsforliberty.org/chapters-coming-soon/>

Moms for Liberty - Northumberland County, PA is dedicated to the survival of America by unifying, educating and empowering parents to defend their parental rights at all levels of government.

Hilltop Land Management

2244 Buffalo Road

Lewisburg, PA 17837

570-428-5581

sergeishek@hilltoplandmanagement.com

Sergei Shek - Owner

<http://hilltoplandmanagement.com>

We provide land clearing and Hydroseeding services. Please, look at our Facebook page for more information.

Kopitsky Insurance Agency

559 Mill St., Ste. 101

Danville, PA 17821

570-580-4845

skopitsky@farmersagent.com

Suzanne Kopitsky - Agency Owner

<https://agents.farmers.com/pa/danville/suzanne-kopitsky>

At the Kopitsky Insurance Agency, we help customers like you identify the insurance coverage that best fits your needs. We are your local Farmers® agents serving Danville, Lewisburg, Bloomsburg, and the entire surrounding area. Give us a call, and we can discuss all your options for home insurance, business insurance, auto insurance, and so much more.

Kurtz's Motorsports

151 Bryson Road

Allenwood, PA 17810

570-538-2160

sales@kurtzmotorsports.com

Michelle Kurtz - Office Manager

<https://www.kurtzmotorsports.com>

Welcome to Kurtz Motorsports, Inc., the region's top-ranked dealer for powersports products located in Allenwood, PA. We are your one stop shop for the hottest new powersports vehicles, including: motorcycles, ATVs, snowmobiles, side by side vehicles and more.

Membership Renewals

(As of July 19, 2022)

ADERS, Inc. (Autism Diagnostic Evaluations Resources & Services)

American Drug and Alcohol Diagnostics

Arthaus Projects

Arthurs Pet Pantry

Century 21 Mertz

& Associates, Inc.

Country Turf & Trail

Covation Center

Devoted To Your Day

Emmanuel Home

Frame It Here

Intrada Technologies

Kevin's Garage

Lifting Little Lives

Malee Law Firm, P.C.

Mountain View

Nesco Resource (DePasquale Staffing Services)

Northumberland County

Economic Development

RE/MAX Bridges - Lewisburg

RE/MAX Bridges - Watsonstown

RE/MAX River Valley Realty

Skyworks Equipment Rental

SUNCOM Industries

The Graphic Hive

Universal Advertising

Associates, Inc.

Victoria Rosancrans

VNA Health System / Lewisburg

Home Health and

Crossings Hospice

W & L Collision Center

W & L Nissan

W & L Subaru

XW Construction

**Do you like
discounts on
products
and services?**

Visit

www.centralpachamber.com

and click on

**"Member-to-Member
Discounts" under the
"Membership" tab.**

Want to offer a discount to fellow

Central PA Chamber members?

E-mail jshaffer@centralpachamber.com.

*Find the latest member news on our
Facebook and Instagram pages and
@ www.centralpachamber.com.*



Member Spotlight



Jessica Houck,
Director of Programs for PA/CT/WNY
717-437-3125

Jhouck@A4TD.org

www.A4TD.org

How long have you been in business?
Since 1983.

What makes your organization unique?

- Extensive expertise training and serving mature workers .
- Been selected as a 'Best Practice' site in the study researching 'how outstanding SCSEP programs help older workers tran-

sition to jobs, offer high value community service opportunities and overcome various challenges to attain excellence' (2002).

- Developed unique computer training & mentoring initiatives to help job seekers modernize their skills.
- Helped mature job seekers earn industry-recognized credentials such as Phar-

macy Tech Licenses, ServSafe certifications, etc.

- Served thousands of older workers with training and job placement services.

What is a service that people are surprised to learn you offer?

- Supportive service funds for dental, transportation, incidentals (clothing, shoes, etc.), vision.

Chris Confer,
Business Development Coordinator
570-505-1289

chris.confer@raymondjames.com

www.aspirewealthgrp.com



How long have you been in business?
Since 2011.

What makes your business unique?

Our team has the ability to customize a financial plan to fit each individual. Whether it is a couple getting ready to purchase their first home or a retired individual planning for their future, Aspire is there every step of the way. Another distinguishing aspect about our organization is that we have a young team. Our advisors come from many different backgrounds and bring great knowledge and growth to the overall team.

Aspire Wealth Group is affiliated with Raymond James Financial Services. Raymond James is a global financial service firm with a focus on providing trusted advice and tailored, sophisticated strategies for individuals and institutions.

Jason Dugan, President and CEO of Aspire, was recognized as a 2021 and 2022 Forbes Best-In-State Wealth Advisor. This list, produced by Forbes in partnership with SHOOK research, is an elite list of wealth advisors nominated by their firms. Jason has also received Chairman's Council recognition for the Top 100 advisors within Raymond James Financial Services.

What is a service that people are surprised to learn you offer?

People are mostly surprised that we can follow our clients through every stage of life. Our clients span generations, and we often find ourselves working with multiple generations within one family. The relationships that we have built over the years are very meaningful to our entire team.



Bobbi Landis, Marketing Director

570-765-7293

info@timberhavenloghomes.com

www.timberhavenloghomes.com

try, and we are only a phone call away.

- Quality! Quality is an integral part of who we are and what we do. We pay careful attention to each step in the manufacturing process to ensure a quality custom home that will last a lifetime. Our premium-grade Kiln-Dried Engineered or Traditional Solid Logs & Timbers are second to none.

- Completeness and Flexibility! We offer one of the most complete home packages available on the market today. Plus, from design services to package components, our packages are completely customizable to meet specific homeowner needs.

- Quality Assurance Programs! Our home packages are backed by our most complete "No-Shop" Guarantee and the finest Lifetime Warranty available.

What other community organizations does your organization participate in?

Every quarter, the Timberhaven Team sponsors a non-profit organization and/or family in need. We have made contributions to the Samaritan's Purse, American Red Cross, Ronald McDonald House, By Grace Transitional Home, Promise Ranch Ministries, ARC of Susquehanna Valley, various homeless and food bank drives, and more.

How long have you been in business?

Timberhaven Log & Timber Homes was established in 2013, though our team has an employee average of 29 years experience in the log and timber home industry.

What makes your business unique?

The Timberhaven Difference:

- Who we are! As previously mentioned, we have the most experienced team in the indus-

What's Happening



HAVEN to HOME
CANINE RESCUE

CORDIALLY INVITES YOU

DUELING PIANOS

A Benefit Fundraiser with Special Guest "Otis," a senior collie rescued from life on a chain in February 2022. He was severely matted, had double ear infections, and needed 20 diseased and loose teeth removed. Help us, help them!

AUGUST 28, 2022 • 3-6 PM •
WHISPERING OAKS VINEYARD

SPONSORS NEEDED!




Tickets will be \$20, in homage to Otis's 20 teeth that were removed.
Time for the tooth fairy to pay up!
For more details, visit our Facebook page.

LIFTING LITTLE LIVES PRESENTS

The 8th Annual Winefest by the River

Aug. 13th - 1 p.m. - 5 p.m. Montgomery Park
Rt. 405 Just off the Bridge in Montgomery

This is a Free Family Friendly Event

Donation \$15.00
for wine tasting
Must be 21 or older for wine tasting
(Proper I.D. Required)

Over 7 Wineries and Distilleries
Food & Craft Vendors
Music Entertainment

Advanced reservations at
www.LiftingLittleLives.org
incl. a stemless wine glass
(while supplies last)

Proceeds benefit ill and/or disabled children in our area
www.LiftingLittleLives.org

MOMS for LIBERTY
NORTHUMBERLAND COUNTY • PA

MOMS for LIBERTY
UNION COUNTY • PA

Mark. Your. Calendar.

School Board Candidate Training
August 13, 2022
10am to 12pm



Central PA Chamber of Commerce
30 Lawton Lane
Milton, PA 17847

The Future Begins now!
Register online at
<https://www.momsforliberty.org/events/738/>

the YMCA

GRAB & GO MEALS



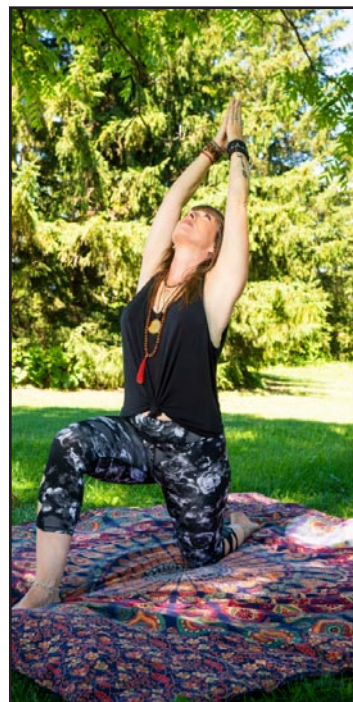
LOCATION: MILTON YMCA
(garage door on Elm Street)

Wednesdays until Aug. 17!
Pick up times will be from 1-2PM and 4-5:30PM

Parents of children under 18 years old
may pick-up five-day bundles of
lunches and snacks

12 BOUND AVE
MILTON, PA 17847

Find the latest member events
on our Facebook and Instagram pages!



SUNSET YOGA ON THE LAWN

at Roupp Funeral Home
with Johanna Kodlick of
Lizard Toes Yoga

August 7th, 2022
7pm - 8pm

Free to attend
No yoga experience needed

Register Today!



**AUGUST 6, 2022
11:00 AM
KREAMER FIRE HALL**

DRAG BINGO!

TEQUILA ALEXUS CHYNNA XANDER

**ALL PROCEEDS BENEFIT
ARTHUR'S PET PANTRY**

**\$20 ADVANCED TICKETS - PAYPAL
ARTHURSPETPANTRY@GMAIL.COM**

**\$25 TICKETS AT THE DOOR
GIFT CARD BINGO**

*Find the latest member events
on our Facebook and Instagram pages!*

CENTRAL PA BUSINESS & EDUCATION ASSOCIATION

Seminar & Training Series

How to Deliver a Great Elevator Speech

9 a.m. to 11 a.m. Wednesday, August 24

Central PA Chamber of Commerce, 30 Lawton Lane

Cost: \$5 Member / \$10 Non-Member

Register: www.centralpachamber.com/events

Presented by:



Date	Event	Location	Time	Cost
8/2/22	OSHA Myths and Misconceptions: Setting the Record Straight	Webinar	2 to 3 p.m.	Free
9/14/22	A Holistic Approach to Workforce with Talent Pipeline Management (TPM)	Webinar	3 to 4 p.m.	Free
9/15/22	Lean Manufacturing Level One Certification - Williamsport	Center for Business & Workforce Development, 1127 W. 4th St., Williamsport, PA 17701	8 a.m. to 4:30 p.m.	\$1,795

IMC INNOVATIVE MANUFACTURERS' CENTER

Lauri Moon
Manager, Outreach & Special Projects
570-329-3200 ext 8085

www.imcpa.com/events

S B D C
PENNSYLVANIA

**Small Business
Development Center**
Bucknell University

570-577-1249
www.bucknell.edu/sbdc

Date	Event	Location	Time	Cost
8/5/22	Salamander Wellness & Yoga Studio Ribbon Cutting & Grand Opening	126 S. Front St., Milton, PA 17847	5 p.m.	No Fee

Have you dreamed of being your own boss for many years but don't know where to start?...

Start with the Bucknell SBDC!

Mostly Mutts to tee it up

SUNBURY – Registration is open for Mostly Mutts' 13th annual golf tournament on Wednesday, Sept. 7, at the Susquehanna Valley Country Club, Selinsgrove.

The four-person scramble will begin with event-day registration at noon and a shotgun start at 1. The entry fee of \$85 covers 18 holes of golf, a cart, refreshments and chances to win various prizes. All proceeds benefit the no-kill shelter in Sunbury.

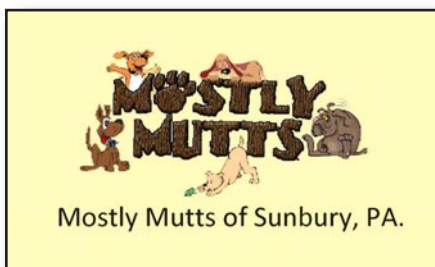
Prizes will be awarded at specialty holes for closest to the pin, longest putt and closest to the line. Golfers who bring a donation from Mostly Mutts' wish list, available at www.mostlymuttsonline.com, will receive a free lunch at registration, courtesy of the Susquehanna Valley Country Club. A silent auction is also planned.

To register for the tournament, golfers may complete the form available at www.mostlymuttsonline.com. Checks payable to "Mostly Mutts Inc.", along with completed registration forms, should be sent to: Sunbury Motors KIA, c/o Liz Mertz, P.O. Box 403, Hummels Wharf, PA 17831.

For information on sponsorship packages, contact Mertz at 570-274-6131.

New this year is the opportunity to honor or memorialize pets with on-course signs at a cost of \$100 each. Contact Sara Fry at sarafry2@gmail.com for information.

Mostly Mutts is a no-kill animal shelter in Sunbury. To learn more about Mostly Mutts, the animals available for adoption, and upcoming events, visit www.mostlymuttsonline.com, call 570-988-6483 or follow Mostly Mutts of Sunbury PA on Facebook and MostlyMutts-Sunbury on Twitter.



Mostly Mutts of Sunbury, PA.



Runners crossing the finish line at the first Y to Y Challenge.

Y to Y Challenge

MIFFLINBURG, PA – The 2nd Annual Y to Y Challenge will take place at 8:30 a.m. on Saturday, Sept. 17 on the Buffalo Valley Rail Trail.

The 7.5 mile walk/run event begins in the area of the Mifflinburg Weis Markets store, with the finish line on the courtyard of the Lewisburg YMCA at the Miller Center.

The event supports youth programs at the Mifflinburg and Lewisburg branches of the Greater Susquehanna Valley YMCA.

One program that stands to benefit is the Teen Leaders Club at the Mifflinburg YMCA. The Teen Leaders Club includes students in sixth through ninth grades who meet weekly at the Mifflinburg YMCA after school to

participate in service projects for the betterment of the community. "The youth enjoy fun activities, build friendships, learn and grow as individuals, and develop leadership skills, all while making valuable contributions to improving the local community," said Angela Haines, Director of the Mifflinburg YMCA.

The public is invited to gather on the courtyard of the Lewisburg YMCA at the Miller Center to cheer on runners and take part in activities including an obstacle course for kids, Pelican's Sno-balls, a food truck, nutrition information and more.

To register and for more information, visit gsnymca.org, or contact Angela Haines at 570-966-7273 or ahaines@gsnymca.org.

5K RUN OR WALK & VIRTUAL MOVEMENT

OCTOBER 15, 2022

REG. OPENS 8:00AM : RACE BEGINS 9:00AM

SOUTH WILLIAMSPORT PARK COMPLEX
E CENTRAL AVE | SOUTH WILLIAMSPORT, PA US 17702

WE EXIST TO SUPPORT AND ENCOURAGE FOSTER AND ADOPTIVE FAMILIES IN CENTRAL, P.A. WHILE MOBILIZING AND EQUIPPING THE COMMUNITY AND LOCAL CHURCH SO THAT CHILDREN HAVE A SAFE, LOVING, FOREVER HOME IN WHICH TO DWELL.

SCAN HERE TO REGISTER!

because every kid matters

1 LESS orphan in the world
1 LESS child in foster care,
1 LESS teen aging out
1 LESS foster family feeling unsupported and alone.

Register on or before September 15th, to receive a "Miles for Minus 1" 5K shirt!

WWW.DWELLORPHANCARE.ORG
DWELL IS A 501(C)3 NONPROFIT ORGANIZATION. EIN 83-2470625

Ronald McDonald House of Danville

4th Annual Masquerade Ball

Friday, September 16, 2022

6:00-10:30PM

Bush House Estate
Muncy, Pa

Purchase tickets at
rmhdanville.org

presented by



Ambassador Challenge raises \$153K

LEWISBURG - Evangelical Community Hospital introduced a new way to support its commitment to the community with the Ambassador Challenge.

The challenge, which ran throughout May, raised over \$153,000 to support the Evangelical Care Fund.

The fund provides a foundation of financial support for Community Health and Wellness screenings, events, and education; Mobile Health of Evangelical; Evangelical Regional Mobile Medical Services (ERMMS), the Hospital's paramedic and EMT response; The Family Place, the Hospital's obstetrics unit; Hospice of Evangelical, end-of-life care; and more.

The 2022 Ambassador Challenge was generously supported by many businesses and organizations including the lead "Emissary" sponsor—Fulton Bank.

The Ambassador Challenge featured community representatives promoting the Hospital's mission and encouraging charitable giving as ambassadors for the Hospital. Denise Haddon of Selinsgrove; Timm Moyer of Watsontown; and Leslie Temple of Lewisburg were the ambassadors of this inaugural campaign in 2022.

Collectively, the three ambassadors raised \$75,555 with Leslie Temple of Lewisburg being named Ambassador of the Year for raising over \$45,000. Each ambassador was presented a crystal award by Kendra Aucker, President and CEO, at a celebration appreciation event.

"All three ambassadors for this year's challenge took on their part of the challenge with enthusiasm built on their dedication to Evangelical Community Hospital and the role it plays in the community," said Donna Schuck, Associate Vice President of Philanthropy and Donor Relations. "They exceeded all expectations and have set a great example for years to follow. They couldn't have done it without members of the community who backed them in their support of the Hospital."

In addition to monies raised by the ambassadors, an online auction brought in over \$7,000 and a Weis Shopping Spree raffle garnered over \$2,000.

Winner of the 2-minute shopping spree was Mary Ann Hamilton of Lewisburg, who during her run through the Lewisburg Weis, filled her cart with \$960.69 worth of groceries. Other winners of the raffle included Ryan Ehmann of Milton who won a \$100 Weis Gift Card, and Samantha Mahaffey of Williamsport who won a \$50 Weis Gift Card. The Ambassador Challenge committee included: Brandy Kift, Chair; Eustacia Muir, Co-Chair; Jeanne Bernt; Chad Evans; Kristen Moyer; and Stacey Napoli, along with staff members, Schuck; John Allison; Drew Kauffman; Krista Stephens; and Bridgette Thompson.



Leslie Temple of Lewisburg earned the honor of Ambassador of the Year for raising over \$45,000 to support the Ambassador Challenge.

**Creative
Teamwork.
Brilliant
Solutions.**



Whether you need a creative way to stimulate your business with web, print, apparel, or promotional items, allow the dedicated team at AdOne to help increase your brand awareness! We deliver the project with competitive pricing and fast turn times.

AdOne
advertising & design



print design



web development



apparel



promotional items



display/signage

570-286-1111
mypromotionalneeds.com



SAVE THE DATE



**SATURDAY
-
SEPTEMBER
17TH
2022**



Time with Tea Jay

Reflecting and resolving

A lot of people don't take the time to reflect on events, including myself. But, I took some time to go over some key takeaways from the past month.

First, poor communication often creates a tense environment where people are not motivated to be productive and not inspired to collaborate. This lack of motivation then affects how employees relate to clients and potential customers, negatively affecting the bottom line. Poor communication skills lead to frequent misunderstandings and frustration. Always do your best to provide a clear message.

Second, passion never fails. Paul Chen, an entrepreneur, said passion is an unstoppable inner force that drives you to achieve whatever goal or dream you have. Maybe your definition is a little different and that's fine. Whatever your personal definition, write it down. And since it won't fail, because passion never fails, ride the wave, and stay true to it and you.

Third, people matter. The mission of Central PA Chamber member Kingdom Kidz Inc is "Presenting quality programs through excellent puppetry and providing educational experiences to foster individual creativity in order to encourage others to make a difference and to help us to show people they matter." They hosted our most recent Inside Jobs Tour, and they make their mantra quite clear.

Fourth, we must show love and kindness to others despite their failures and shortcomings. When we sin, when we blow it; God forgives us if we confess it. He continues to love us and encourage us. We should treat others in like manner. This was shared by Paster Mike Reece of Delaware Run Wesleyan Church where I am a member.

And, Captain Richard Phillips of the Maersk Alabama, who was rescued along with his crew by Navy Seals, said, "I have three things I would like to leave you with: One, you are stronger than you know, and you can handle much more than you think. Two, the only time it is over is when you say it is over. Three, a motivated, focused team of professionals can solve any problem." It was a joy listening to him speak while accepting an award from Manufacturers' Association in York.

I'm also looking ahead, because there remains a lot of excitement right around the corner.

What is an elevator pitch and why do I need one? An elevator pitch is a brief way of introducing yourself, getting across a key point or two, and making a connection with someone. It's called an elevator pitch because it takes roughly the amount of time you'd spend riding an elevator with someone. Elevator pitches are handy to have in mind any time you're at an event where you might meet prospective clients or networking connections. You can hone your skills later this month with our Communication Director Jeff Shaffer, during the Seminar & Training Series class "How to Deliver a Great Elevator Speech" on Aug. 24, here at Chamber. Be sure to register soon as this popular course fills up quickly.

And, you can already see our excitement for our Annual Meeting on Oct. 27 featuring Olympic medalist Joey Lye, who is now the Chief Empowerment Officer of Joey Lye OLY LLC. At our event, she plans to speak on: Knowing yourself; Taking advantage of your "superpowers"; and Connection with others. Registration is now open.

Tea Jay

Tea Jay Aikey
President & CEO

tjaikey@centralpachamber.com



Celebrating CSVT



The Central PA Chamber was honored to be a part of the ribbon cutting on June 29 for the Central Susquehanna Valley Transportation Project. Dozens upon dozens turned out to celebrate the completion of the river bridge, with several speakers, the ribbon cutting and a chance to drive across to the Union County side from the Northumberland County side with stops in between. Many key people to the project - past and present - were in attendance, including numerous public officials at the local, state and federal level. This bridge is a much needed and welcome addition to our area. Congrats to everyone involved!

CENTRAL PA
CHAMBER OF COMMERCE

HOME DECORATED PRODUCTS ABOUT THE GRAPHIC HIVE CONTACT

Welcome to the Central PA Chamber of Commerce Apparel Store!

START SHOPPING

Central PA Chamber Of Commerce - CrownLux Performance™ Men's Plaid Polo

Central PA Chamber Of Commerce - CrownLux Performance™ Ladies' Plaid Polo

Central PA Chamber Of Commerce - Ladies' CrownLux Performance™ Plaid Tipped Sleeveless Polo

Central PA Chamber Of Commerce - Ladies' CrownLux Performance™ Plaid Tipped V-Neck Polo

You can't get much cooler - figuratively and literally - if you're sporting the Central PA Chamber's new line of shirts, only available for a limited time!

Order yours today at: centralpachamber.graphichivestores.com
Shirts are expected within three weeks of the online store closing.

Thank you to The Graphic Hive for setting it up!

Decal Dynasty
WRAPS & GRAPHICS

VEHICLE & TRAILER WRAPS | SIGNS & BANNERS

570.922.3361

WWW.DECALDYNASTY.NET

A DIVISION OF POTOSIN DECAL SERVICE

DECAL APPLICATION & REMOVAL

Fleet & Truck Markings,
Custom Striping, Labels, Magnetic Signs,
Contractor Job Site Signs, Posters,
Window & Wall Graphics, Building Letters

A Quality Service

decaldynasty.net • 17355 Old Turnpike Road (Rt 45), Millmont, PA 17845

DeFoor headlines Legislative Event

LEWISBURG - The Central PA Chamber of Commerce welcomes state Auditor General Timothy DeFoor as the speaker for its Legislative Event Friday, Sept. 16, at the Watson Inn, Watsontown. Specific topics to be addressed by DeFoor were not yet available as of publication time, however, expect relevant discussion as always and a chance to ask questions.

To register, and for any updates, visit www.centralpachamber.com/events. This Legislative Event is sponsored by Service 1st Federal Credit Union.

DeFoor was sworn in as PA's 52nd Auditor General on Jan. 19, 2021. He started his career in public service as a special investigator with the state Office of Inspector General, where he investigated government and contractor fraud, waste, and abuse within state government. DeFoor then went on to become a special agent with the state Office of Attorney General, investigating Medicaid fraud and illegal prescription drug diversion. Later, he became a fraud investigator and internal auditor for the University of Pittsburgh Medical Center – Health Plan and various federal contractors.

In 2015, DeFoor was elected as Dauphin County Controller, where he quickly earned a reputation as a fiscal watchdog and trusted leader, saving and recovering more than a million taxpayer dollars during his first term in office. He has also worked to create Dauphin County's first Audit Division, and prepared the first Dauphin County Retirement Fund Report.

His efforts earned his office Dauphin County's first ever award for financial reporting from the Government Finance Officers Association.

Growing up in Harrisburg, DeFoor has always been committed to giving back to the community he loves. He currently serves on and is the former chair of the Harrisburg Area Community College Foundation Board of Directors, state YMCA of Pennsylvania Board of Directors, and the Chris "Handles" Franklin Foundation Board of Directors. In addition, he is a member of the Greater Harrisburg Area NAACP and the Pennsylvania State Fraternal Order of Police Lodge #78.

DeFoor is also very passionate about financial literacy being taught to adults, teachers and Pennsylvania students from kindergarten through 12th grade.



Timothy DeFoor

"Annual Meeting" (from page 3)

Lye said the opportunity to share her message at the Annual Meeting means a lot to her.

"Connection is something that drove progress toward my Olympic dream and continues to impact me today," she said. "Connecting further with both the Central PA Chamber of Commerce staff and the membership is an honor I hope to live up to."

As she continues to work on her talk, Lye anticipates speaking about the importance of knowing yourself, taking advantage of your "super powers", and connecting with others.

To register, visit: www.centralpachamber.com/events. Annual Meeting sponsors as of press time are: Service 1st Federal Credit Union, Meal/Venue Sponsor; Evangelical Community Hospital, Centerpiece Sponsor; kinetic by windstream and T-Ross Brothers Construction, Award Sponsors; The Wealth Factory, Favor Sponsor; Susquehanna Fire Equipment Co., First Commonwealth Advisors - Scott Frost, and Cabinetworks Group, Program Sponsors. To be a sponsor, call Jessica Williams at 570-742-7341.

CENTRAL PA
CHAMBER OF COMMERCE

welcomes

PA Auditor General Timothy DeFoor



7:30 to 9 a.m. Friday, Sept. 16 @ Watson Inn, Watsontown

Topics: To Be Determined

Admission: \$17

Register @ www.centralpachamber.com/events

Premier Sponsor:



Friends you can bank on.

**LIVE
HIGH SCHOOL
SPORTS**
and Original
Local Programming

Exclusively on Service Electric Cablevision
Channels 508 HD | 8 SD | On Demand



secv8.com

Who Represents You?

Where were you born?
Williamsport, PA

Favorite vacation spot?
My husband and I love to go to Seneca Lake and stay in a cabin.

Have any hobbies?
Playing softball, camping with my family and volunteering in my community.

A fun fact about yourself?
Including where I live currently, I have moved 13 times in my life.

What is your favorite Chamber memory?
So far with the Chamber, it was the Inside Jobs Tour at Whispering Oaks Vineyard.



Ashley Parrish
First Commonwealth
Bank

Director
Term ending 2024

CENTRAL PA
CHAMBER OF COMMERCE

Members Recognized

Evangelical Community Hospital

LEWISBURG - Ryan Brown, BSN, RN, has been named Director of Peri-Operative Services at Evangelical Community Hospital.

In this role, Brown's primary purpose is to direct, coordinate, and manage the financial resources, human resources, materials/supplies, and patient care activities of peri-operative services (Pre-admission Care, One Day Surgery, and PACU/Recovery Room) on a 24-hour basis.

Brown has over two decades of nursing experience and for the last decade has served in a hospital/healthcare environment. He comes to Evangelical from Geisinger Medical Center where he most recently served as the Operations Manager of Surgical Services and Division of Anesthesia. Prior to that, he served in nursing leadership and management positions including working with radiology and the implementation of nurse information/inpatient systems.

In addition, Evangelical is pleased to welcome Michael Briskey, MD, an Emergency Medicine physician to its Medical Staff. Dr. Briskey joined the Evangelical Emergency Medicine Group in June.

As an emergency physician, Dr. Briskey specializes in rapid recognition and treatment of trauma and acute illness.

Dr. Briskey received his Doctor of Medicine from Drexel University College of Medicine, Philadelphia. He completed his residency in Emergency Medicine, serving as Chief Resident, at Crozer-Chester Medical Center in Upland, Pa.

Dr. Briskey is currently completing his Fellowship in the Academy of Wilderness Medicine (FAWM) through the Wilderness Medical Society. As a FAWM fellow, Briskey will be recognized as receiving the highest level of achievement in the field of wilderness medicine. Wilderness medicine concentrates on recognizing, treating, and preventing injuries and illnesses that are common in the outdoors.

And, Shelby Ruch, RN, BSN, was presented the DAISY Award in June. The award is presented to a deserving nurse who exemplifies clinical expertise and compassionate care and is recognized as a role model in the nursing community.

Ruch, who has been an RN and a part of the Evangelical family of employees since January 2017, was surrounded by her nominator, fellow coworkers, mentors, Hospital and Nursing leadership, as well as her husband, daughter, and extended family, as she was presented with the award. She was nominated for the award by a coworker, Brittany Smith, a nursing assistant on the Acute Care Unit at Evangelical. In the nomination, Smith shared, "I got to follow Shelby around for my nursing internship. The one day we had a 'heavy' assignment, but I watched first-hand Shelby making sure every patient was well cared for. Now working as a nursing assistant, I have watched Shelby go above and beyond with every patient she encounters. She exemplifies the role of an empathetic and caring nurse, and I could not be happier than to work beside her and follow in her footsteps."

Ruch was hired as an RN on the Surgical Unit when she began at Evangelical. In the transition to the new addition of the Hospital her



Ryan Brown



Dr. Michael Briskey



Shelby Ruch

nursing expertise now includes caring for medical, surgical, and acute care patients. Since joining Evangelical, Ruch has worked through the nursing ladder program at the Hospital and is currently a level III Registered Nurse. A RN III is accountable for the provision of expert patient care including service to patients with complex needs. The level III nurse has increased responsibilities that may include staff orientation, patient care coordination, or other unit/service activities.

Nominations for the DAISY award can be made by patients, patient family members, colleagues, and providers. If an Evangelical Community Hospital nurse has displayed extraordinary clinical expertise and compassion, visit www.DAISYNomination.org/ECH and fill out a nomination form.

SEDA-Council of Governments

LEWISBURG - SEDA-Council of Governments (SEDA-COG) is pleased to announce that Teri Provost, a 15-year staffer, will be taking on the role of Chief in the newly formed Community Services Division.

The Community Services Division (CSD) will encompass SEDA-COG's Community Development, Flood Resiliency, Housing Rehabilitation, and Community Revitalization programs. In the CSD, the intentionally coordinated efforts of these departments will further allow SEDA-COG to respond to community needs in a more comprehensive way. These efforts will ultimately provide improved service opportunities to our member counties and regional communities.

Provost worked in SEDA-COG's Community Development Program for nine years before becoming the Director of Housing Rehabilitation and Flood Resiliency. Throughout her 15-year career at SEDA-COG, she has prepared numerous grant applications and has proficient experience with Federal Emergency Management Agency and Housing and Urban Development programs. Provost has been a member of The Association of State Floodplain Managers (ASFPM) since 2018 and serves as the Chapter District 2 Director. This position has a two-year term.

She also serves as past chair of the Pennsylvania Association of State Floodplain Managers (PAFPM) board. Her board appointment is from January to December 2022. Before this appointment, she held the Vice Chair position with PAFPM from January to December 2021.

Provost has also developed and managed public works projects throughout the central Pennsylvania counties served by SEDA-COG. Additionally, she is a Certified Floodplain Manager (CFM) and has administered several state- and federally-funded buyouts and residential elevation projects in flood-prone communities.

"My top priority is to ensure that our agency can serve the region for years to come in a truly impactful manner, not only by leveraging grant funding opportunities, but also by building long lasting meaningful relationships. In the CSD, the orchestration of multiple aspects of municipal assistance will provide a comprehensive community approach to community resiliency, augmented by diversity in leadership and innovation," Provost said.

In other news, SEDA-COG recently welcomed Brooks Luzier as a Loan Officer within the Business Finance Department.

Luzier has over 10 years of experience in banking, customer service and sales. He previously worked as the Commercial Relationship Manager for Jersey Shore State Bank. Luzier currently serves as a Board Member for both the Lock Haven YMCA and the River



Teri Provost

Valley Regional YMCA. He received a Bachelor of Arts degree in Political Science from Lock Haven University in 2010.

Lewisburg Sunrise Rotary Club

LEWISBURG - The Rev. Ralph Hibbs was named the new president of the Lewisburg Sunrise Rotary Club.

A retired clergyman, he has been a member of the club since August 2020. His vision for the club this year is "Imagine Rotary", which is the Rotary International motto for 2022-2023.

Hibbs would like the club members to continue to use their energy to touch more lives in the community and around the world, focus on local, national and international club projects and have fun. Immediate Past President is The Rev. Marian Anderson.

And, Brett Hosterman was recently inducted as a new member of the Lewisburg Sunrise Rotary Club.

He is a freelance photographer, graphic designer and musician from Central Pennsylvania. He launched his photography and graphic design business, Hosterman Photography in Montandon, in 2015, specializing in portraits to artistic still-life's and nature's beauty.

Camp Mount Luther

MIFFLINBURG - The Camp Mount Luther Corporation is pleased to announce the creation of a new part-time remote position at the camp, located outside of Mifflinburg.

The new position will expand the camp's community outreach through marketing and new programs.

Pastor James A. Vitale, Jr. began his position in July and will focus on writing and editing daily digital devotions, work on current and new marketing opportunities, and develop new off-season programs. Vitale, now living in Harrisburg, is originally from Albany, NY but comes to Camp Mount Luther by way of Beaver Lutheran Church, Beavertown. He is also returning to school to pursue a master's degree. The camp is working with the Upper Susquehanna Synod and the Evangelical Lutheran Church in America (ELCA) to make this a called pastoral position, as Pastor Vitale is rostered in the ELCA. Vitale said he is excited for the opportunity to work for camp and can't wait to see where this new calling leads them.

Executive Director Chad W. Hershberger said, "Knowing Jim's gifts and experiences - particularly his work on digital devotions and marketing when he was at Luther Seminary - I feel he is going to be a tremendous asset to our ministry as we try to branch out into new areas to attract campers and user groups. This new position continues our efforts this year to operate in new ways but still maintain high quality of services.

"I'm looking forward to working with Jim to help expand camp's reach and offerings to the people of Central PA."

For more information on any of Camp Mount Luther's programs call the camp at (570) 922-1587 or visit www.campmountluther.org.

Community Giving Foundation

BERWICK - The Community Giving Foundation is pleased to welcome Shelli Sarge to the Foundation team as Operations Assistant.



Rev. Ralph Hibbs Brett Hosterman



Pastor James Vitale, Jr.

Sarge will work closely with the Foundation's Director of Philanthropy to provide support for the development and finance departments by processing incoming donations, offering technical support to donors and fundholders, and utilizing the Foundation's database software to its fullest capabilities. Prior to joining the Foundation team, she worked for KN-AN Inc. and Lehrine Inc. as a bookkeeper, and also owned and operated Red Brick Studios for many years. She is a native of Nescopeck and continues to call the community home with her husband. Their daughter lives in York, PA. "I am excited to work with the Foundation and am impressed with its ideals," Sarge said. "I appreciate the value of helping others in our local area and look forward to serving the community with this team."

For more information about the Community Giving Foundation, visit csgiving.org or call the Foundation at 570-752-3930.



Shelli Sarge

Lawton Insurance Agency

LEWISBURG - Lawton Insurance Agency recently hired Ashlyn Yearick as a customer service representative.

New to the insurance business, she is actively working to obtain her Property & Casualty License. Yearick is a 2014 graduate of Mifflinburg Area High School and now resides in Lewisburg with her husband, Jesse, and their two sons, Bentley and Gideon. Outside of work, she enjoys spending time with her family.



Ashlyn Yearick

Pennsylvania Business Central

STATE COLLEGE - Women in Business, a publication of Pennsylvania Business Central, has announced its 50 to Follow Women-Owned Businesses, which includes two Central PA Chamber members - Diane Weller Coaching and Marie Wagner LMT.

In 2016, Diane Weller tapped into 33 years' experience across health care, insurance, and higher education, and her love for people development, to launch Diane Weller Coaching. Today, she serves as an internationally certified coach, speaker, writer, and Chief Encouragement Officer. Weller is a nationally recognized speaker on the topic of Solving Your Career Confusion and Easing Career Change. She specializes in guiding individuals to gain confidence and advantage from their natural strengths, and organizations to develop communication skills that build credible effective teams and increase performance.

She holds degrees from Central Penn Business School and Penn State University. She sits on the Career Services Advisory Council at Central Penn College and is an organizing member of 1 Million Cups Susquehanna Valley, a monthly event that educates, engages, and empowers entrepreneurs.

The company Marie Wagner LMT (Licensed Massage Therapist) specializes in pain management, stress relief, and oncology massage. Marie Wagner is the owner/operator with two locations. The first office is open to people with pain and stress in Lewisburg. The second office is available for people in treatment within UPMC Hillman Cancer Center in



Diane Weller



Marie Wagner

Ribbon Cuttings

Congratulations to Java Momma! On July 1, the Central PA Chamber of Commerce helped them celebrate their grand opening at 1426 Ferry St., Danville, with a ribbon cutting ceremony. They have a large assortment of coffees to enjoy, plus teas, spices, ice cream, jams and a number of gifts. They also provide online sales, whole sale, private label and more.

Visit www.javamomma.com.

Cutting the ribbon is Melissa Shoop, CEO and Founder. She is flanked by, from left, Rob Jones, Central PA Chamber Board Chairman; Shoop; 'Bonnie Barista', 'Community Manager'; Dana Jenkins, COO; and Tea Jay Aikey, Central PA Chamber President & CEO. Melissa and Dana then provided a behind-the-scenes look at the operation.

Find more pictures on the Central PA Chamber's Facebook and Instagram pages.



Congratulations to The Wealth Factory! The Central PA Chamber of Commerce helped them celebrate their new location at 21 Kristi Road, Ste. 1, Muncy, on July 20 with a ribbon cutting ceremony. The fun continued with family, friends and fellow Central PA Chamber members having lunch, networking and more. The Wealth Factory provides independent financial planning, investments and insurance for individuals and business, including employee benefit programs.

Learn more at www.twfplan.com.

Cutting the ribbon is Lauren McDonald, LPL Financial Advisor and co-founder of The Wealth Factory. She is flanked by, from left: Steve McDonald, Lauren's husband; John Machak, co-founder and fellow LPL Financial Advisor; McDonald; Michelle 'Shelly' Vest of M.V.

Payroll Bookkeeping & Tax Services and Lauren's niece; and Tea Jay Aikey, President & CEO of the Central PA Chamber. Find more pictures on the Chamber's Facebook and Instagram pages.

INSIDE JOBS

Thank you to Kingdom Kidz Inc. for hosting the latest Inside Jobs Tour on July 7 at their 'Puppet Home', 11 E. Third St., Watsonstown. Their mission is to share with kids of all ages, either in a religious or non-religious setting, educational concepts through the creative art of excellent puppetry. The Central PA Chamber has seen this organization grow so much over the years, and congratulates them on their continued success! Learn more at www.hiskingdomkidz.org. Pictured are, from left: Lisa Derr, KKI General Manager; Rob Jones of the Milton Historical Society and Central PA Chamber Board Chair; Ryan Workman of Susquehanna Computer Innovations and a Chamber Board Director; Ginnetta Reed of T-Ross Brothers Construction; Tea Jay Aikey, Chamber President & CEO; and Donna Bridge, KKI Founder.



State program highlighting online retailers

HARRISBURG - When it comes to the stock market, diversification is key to building resilience in your portfolio. And, officials with PA Business One-Stop Shop would tell you it should be no different for your small business.

As the Central PA Chamber has been emphasizing this year, there is "Strength Through Knowledge". Having a better understanding of what allows your business to persevere through difficult times is important.

An online store – whether through your own website or via Amazon, Etsy, eBay, etc. – is not only lucrative but even considered critical at this point.

The memories of the state-ordered shutdowns in 2020 due to the rise of the COVID-19 pandemic are still fresh in the minds of seemingly everyone who had to endure it. Naturally, consumers turned to online purchasing when they couldn't get to their favorite local stores, and they apparently haven't looked back.

According to statistics from May 2020, more than 86 percent of millennials (generally considered to be between 22 and 40 years old) shopped online. "Baby boomers" are shopping at a rate of 62 percent while "Gen X" is at 79 percent. And, according to the U.S. Census Bureau, more than \$700 billion was spent for online retail in 2020, which is the latest full year of data available.

You can further take advantage of this online market through CommonGoods, a new e-commerce initiative launched by the state Department of Community & Economic Development at the end of last year.

So, why consider CommonGoods? It's completely free for small businesses to join, according to Terrell Martin, Director of PA Business One-Stop Shop, which is considered to be "the go-to resource for planning, registering, operating, and growing a business in Pennsylvania."

The organization follows the U.S. Small Business Administration's definition of a "small business" of having 500 employees or less. According to this standard, that accounts for 99.6 percent of all businesses in PA, and collectively, these businesses employ 2.5 million people.

In addition, to be eligible for CommonGoods, you must have a retail business with a storefront or other physical location (e.g. manufacturing/distribution wholesaler) with online sales located in PA. Whoever owns or operates it must be 18 or older and registered with the PA Department of State and/or PA Department of Revenue.

Consumers support small businesses for a number of reasons. For one, it helps local communities thrive, shapes the culture and a much higher percentage of profits stay in the local economy.

Martin said, if for any reason, it should be part of your "resiliency planning effort."

"Should there be another shutdown, could the business stay open," he asked.

Not only would you stay open to the customers that already rely on you, but perhaps many more.

"You can expand your reach across Pennsylvania and expand your pool of consumers," said Leora Appleby, Administrative Officer with PA Business One-Stop Shop.

People have latched on to both online shopping and the value of shopping local, she added, which is really important for any small business's success.

The Central PA Chamber has always supported and encouraged partnerships among members, and now there is even chance to grow partnerships through CommonGoods as well.

The program is still in its early stages with only a little more than 100 businesses registered, but an initial goal is to see that a small business from every one of PA's 67 counties joins. As of this writing, there are just a small number of businesses listed from the Chamber's surrounding counties, and zero in Union County, which has a large number of small businesses.

Martin said it's a simple process to register. Go to coomongoods.pa.gov to browse and click "For Businesses" to sign up. You will be asked for routine information about yourself and the business, but also asked about any special classifications (e.g. veteran-owned, woman-owned) and business categories you should be included in. Add some key words, logos, pictures, links to social media and online store(s) and you're pretty much set.

There is an approval process in place, but in the future, site users

may be able to make live updates on their own as needed.

Also coming down the pike is a consumer marketing plan to drive traffic to the website. While "still in its infancy," according to Martin, it will likely involve a strong social media presence. Officials are currently reviewing early surveys from site customers.

Is online selling still something your business hasn't tried? There are many resources to help, either from fellow Central PA Chamber members or the Temple University Small Business Development Center (SBDC), designated to head the Pennsylvania Digital Transformation and eCommerce Program (PADTEP) for the SBDC network, to promote statewide services to transform businesses' abilities to increase profits and sustain operations online. Businesses from any area of PA may reach out to them directly by emailing: sbdc@temple.edu or visiting <https://pasbdc.ecenterdirect.com/signup>.



**faxingmailboxingstoringpacking
printingboxingfreightingcopying
direct-mailingdeliveringbrochuring
designingflyeringshredding
brochuringreceivingsupplying
storingpackingpostcarding**

**Every ing for small business.
And, of course, shipping.**

The UPS Store 

Penn House Commons
325 N 10th St, Ste 400
Lewisburg, PA 17837

570.523.2611 Tel
store5918@theupsstore.com
theupsstore.com/5918

Business & Education

And the winners are...



Congratulations to the winners of the 7th Annual Golf Ball Drop!, sponsored by Service 1st Federal Credit Union, and held prior to the 21st Business & Education Golf Tournament on June 24 at Bucknell Golf Club. Above, Jenna Brown was presented the big check by the Chamber's Finance & Membership Director Jessica Williams in the amount of \$810 for taking first place! Below, taking second, was Jessica Eckman, winning \$324. Third place went to Deanna Rubie. Her \$162 check was mailed to her, since she lives in Arizona. The Golf Ball Drop! has been a great side fundraiser for B&E. Individually numbered golf balls are dropped about 30 feet onto a practice green from a cage, suspended by a crane provided by T-Ross Brothers Construction. The golf balls that roll in to the designated prize hole first (or closest) are the winners of a portion of the cash pot. Thank you to everyone who bought a ticket! You need not to present to win. Make sure to play next year!



T-Ross Brothers Construction recently congratulated Jason Wood from the Warrior Run School District. He received the T-Ross Brothers Construction, Inc. Scholarship Fund set up through the First Community Foundation Partnership of PA. Here he shakes hands with Todd Ross, president of T-Ross. Jason plans to attend Geneva College in the fall to major in Civil Engineering. For more information on the scholarship fund, contact Ginnetta Reed at ginnettar@trossbrothers.com.

EARLY ALERT NOTIFICATION THREAT ASSESSMENT, THREAT DETECTION AND THREAT MITIGATION



DATE
August 19, 2022

TIME
10:00 AM to 2:00 PM

LOCATION
Warrior Run School

SAVING LIVES BY INTEGRATING TECHNOLOGY WITH BOOTS ON THE GROUND

Join ClearView Asset Protection on August 19th at Warrior Run school for a demonstration of the advanced security and technology we offer to prevent active threats from happening in schools, sporting events, concerts and other venues.



clearviewassetprotection.com



La Primavera Italiano Ristorante & Pizzeria

Fine Italian Cuisine

*Banquet Room Facilities
holds up to 160 people*



Titolari: Vito & Salvatore Mazzamuto
Rt. 45 west Lewisburg, PA Telephone: (570) 523-1515

Business & Education Association to refocus

MILTON - The Central PA Chamber of Commerce will look to its members and stakeholders as it plans to refresh and renew its Central PA Business & Education Association (B&E).

The non-profit 501(c)(3) organization has been in existence since 2010, and its members have partnered on B&E-related activities for much longer. However, President & CEO Tea Jay Aikey said it's time to take a hard look at the programs it conducts and their effectiveness at shaping tomorrow's leaders and workers.

"The timing feels right as we seek our next Business and Education Coordinator," Aikey said.

Anyone interested in filling that roll should see the job description below and e-mail a resume and cover letter to Aikey at tjaikey@centralpachamber.com.

This position was recently revisited with several changes and updates. It was approved by the Chamber's Board of Directors at its July meeting.

"We need to keep up with the times and what current needs are," Aikey added.



Her first goal is to encourage any business professional, educator, student, and educational institution to come to the table and help B&E refocus, making it a worthwhile endeavor well into the future.

B&E will not see a complete overhaul, as programs like the Seminar & Training Series, career fairs, job shadowing opportunities and

invitations to students to attend Legislative Events will remain, however, a planned steering committee can help fill in any gaps. Aikey said the Chamber needs to be flexible in meeting the needs of its members.

The end goal is a strong regional workforce with the right set of skills, including "soft skills".

Aikey added it's also important to highlight efforts already being made by other organizations.

"I feel connecting people and groups is one of our best qualities," she said.

Aikey has begun reaching out to individuals to serve on the new steering committee, but if you have an interest in shaping B&E, contact her at tjaikey@centralpachamber.com or call 570-742-7341.

"This won't happen overnight, but it will greatly help the long-term success of B&E, our educational institutions and employers."

We're hiring!

Interested in working for the Central PA Chamber of Commerce as its next Business and Education Coordinator? See how to apply, a position summary, requirements and responsibilities below!

To be considered for this position, applicants must e-mail a resume and cover letter to tjaikey@centralpachamber.com. Your cover letter should specially address the required qualifications to the position as well as salary requirements. Provide contact information for three references, including at least one current or former supervisor.

Position Summary: This is an hourly position responsible for connecting businesses and professionals with educators, students, and educational institutions to develop and equip the workforce of the future. Additionally, responsible for a broad range of administrative, clerical, organizational, and professional duties required to ensure the Chamber's ability to achieve its mission and the objectives of its members. Also assists with functions of the Chamber and its related organizations. These organizations include: Central PA Chamber of Commerce, Milton Area Industrial Development Association (MAIDA), and the Central PA Business & Education Association.

Education and/or Experience: High school graduate with some college or business school preferred. Experience in Customer Service, Business Administration, Marketing, Fundraising, and Public Speaking desired.

Requirements:

- Must possess a valid driver's license and be available for occasional early morning and evening programs and events.
- Must be a self-starter and able to work well in a and contribute to a team environment
- Portray a professional image through conduct, attitude, attire, and grooming.
- Must be able to work under regular, moderate levels of stress.
- Provide excellent customer service.
- Have ability to communicate clearly and concisely, both orally and in writing.
- Possess good decision-making skills.
- Excellent interpersonal, organizational, multi-tasking and time management skills.
- Strong computer skills, including proficiency with Microsoft Office products and keyboarding.
- Basic marketing skills and familiarity with database management.
- Some knowledge of both web site development and social media.
- Basic experience with both Windows and Mac OS.
- Basic experience with photography and videography.
- Must be able to obtain Act 34, 114 and 151 clearances.
- Ability to develop and maintain good relationships.

- Creative thinking and ability to bring ideas to fruition.

Specific Responsibilities:

- Answer phone calls, with back up assistance from other members of Chamber staff, assists callers and directs calls to appropriate members of staff or other sources of assistance.
- Courteously welcomes and assists visitors to the Chamber office as a back-up to designated team member.
- Maintains an organized, attractive, and quality lobby/reception area as well as meeting rooms.
- Recruit new members and continue building relationships with existing members.
- Assist with maintaining membership database regularly to ensure a high level of data accuracy.
- Responsible for the Green Business of the Year Award preparation and application review.
- Coordinate meeting agendas, reports, and scheduling for Business & Education Association Committee with the chairman of the committee and any related sub-committees.
- Processes, responds to, and directs incoming emails from Chamber members and the public.
- Occasionally meets with members at their place of business.
- Assist in preparation of budgets for the Central PA Business & Education Association and the Chamber.
- Review, refine, create, and implement fundraising activities and events to make the Business & Education Association self-sustaining.
- Assist with all aspects of Chamber and Business & Education Association events.
- Provides back-up support for all social media posts and Chamber website updates.
- Review, refine, create, and implement educational activities and events for the Chamber membership as a part of the Seminar & Training Series.
- Serve as program facilitator for Raising the Board.
- Assist with general building maintenance and scheduling of non-general needs.
- Handle invoicing for seminar & training series events.
- Maintains detailed registration lists for events and registers members and guests at events.
- Prepare membership and general correspondence, as assigned, and required.
- While assigned to specific responsibilities, assist other members of staff whenever the need arises.
- The President & CEO may require assistance at functions that occur outside of the normal business hours.

Jessica's Jottings

Your fellow members can help!



Welcome to the last, fleeting weeks of summer vacation! I hope you have enjoyed yourself this season and have taken time to relax and enjoy the beautiful weather we've been experiencing.

Now, we start to prepare for kids going back to school, college classes starting back up, and getting our businesses ready for the year end.

With the majority of our schools starting at the end of August, now is the time to get them stocked up on the supplies they will need. Look no further than some of our Chamber members to help you with this task. A+ Office Outlet has everything from pencils to calculators that your kids will need this school year, and with great prices, you have nothing to lose by paying them a visit in Mifflinburg. Make sure to also keep an eye on the Chamber's Facebook page, as well as your downtown's Facebook page, as businesses like to participate in backpack giveaways to help families.

For the older kids that are heading off to college, now is the time to start filling up their dorms with the items they need. Again, check out A+ Office Outlet for the furniture they may need as well as classroom supplies. Other items to place on their checklist could be opening a checking account, making sure their vehicle is up to par for commutes from school to home, and sort through the clothes they plan to pack and make sure they are set for all weather seasons. You can check out our Membership Directory to find the members that will help you with these tasks.

Now that the kids are ready, is your office ready for the end of year? The third and fourth quarter of any year is a great time to take a look at where you stand on your yearly budget. This will help you determine how much stocking up you can do on supplies to finish out the current year and start the new year off on the right track. Reviewing the first half the year can also allow you to get a head start on creating next year's budget. In this way, you are not scrambling at the end of the year. Being organized and having a game plan will help you and your fellow co-workers stress less, which leads to a great work environment!

Remember, this is all just a few clicks away on our website. Visit today!

Jessica Williams
Finance & Membership Director
jwilliams@centralpachamber.com

Sales & Service

- ◆ Portable Fire Extinguishers
- ◆ Emergency Lighting
- ◆ Backflow Water Testing
- ◆ Automatic Fire Suppression Systems
- ◆ Fixed Gas Detection Systems
- ◆ AED

- ◆ Rescue Equipment
- ◆ Portable Gas Detection
- ◆ Fire Equipment
- ◆ Breathing Air Compressors
- ◆ SCBA
- ◆ DEP/OSHA/Extg Training Classes

800-822-2105

2122 Main Street
P O Box 209
Dewart, Pa 17730

www.susquehannafire.com

"Members Recognized" (from page 13)

Williamsport.

Her community involvement includes raising funds and awareness for local charities and causes by donating \$5 from every 2021 session. In 2022, \$5 from every session at the Williamsport location will be donated to the Touch of Kindness fund through Susquehanna Health providing massages for people in treatment. She has also volunteered with Susquehanna Valley CASA and with Evangelical Hospice.

Wagner graduated from Harrisburg Area Community College and is licensed by the Commonwealth of Pennsylvania. She has also received specialized training in orthopedic massage, oncology massage, and energy work.

According to Women in Business, "It is not only our mission to provide current success stories, but by highlighting these successes to encourage women who have yet to break into the business world."

Villager Realty, Inc.

LEWISBURG - Villager Realty, Inc. recently announced the names of their Realtors selected to be honored as agents in the second quarter of 2022.

Jessica Herman was chosen as Agent of the Quarter in the Northumberland Office. She works with landlords and property management as well as listing and selling real estate.



Jessica Herman

Cory Poticher

Technology is a key element in the organization of her successful day and she continues to exceed client expectations.

Cory Poticher was chosen to be the Agent of the Quarter for the Danville Office, and as the Villager Realty Agent of the 2nd Quarter of 2022. She started with Villager in the quarantine era and is a true testament to what hard work and dedication will do for a real estate career.

Timothy Karr, President and CEO, said of the awards, "The market was still favoring sellers during the second quarter, however, it seems to be leveling out now. During that time period, the agent who was making sales had to work efficiently and effectively with the population seeking housing."

transitions

SAFER FAMILIES. SAFER COMMUNITIES.

COMPREHENSIVE CRIME
VICTIM SERVICE CENTER

24-Hour Crisis Hotline

800-850-7948

www.transitionsofpa.org

LDP receives Main Street American accreditation

LEWISBURG — Lewisburg Downtown Partnership (LDP) has been designated as an Accredited Main Street America program for meeting rigorous performance standards.

Each year, Main Street America and its partners announce the list of Accredited programs to recognize their exceptional commitment to preservation-based economic development and community revitalization.

In 2021, Main Street America programs generated \$5.76 billion in local reinvestment, helped open 6,601 net new businesses, generated 30,402 net new jobs, catalyzed the rehabilitation of 10,595 historic buildings, and leveraged 1,427,729 volunteer hours. On average, for every dollar that a Main Street program spent to support their operations, it generated \$19.34 of new investment back into communities.

The LDP's performance is annually evaluated by Pennsylvania Downtown Center, which works in partnership with Main Street America to identify the local programs that meet rigorous national performance standards. Evaluation criteria determines the communities that are building meaningful and sustainable revitalization programs and include standards such as, fostering strong public-private partnerships, supporting small and locally owned businesses, and actively preserving historic places, spaces, and cultural assets.

"The LDP is proud to be part of an incredible community and able to partner with so many people and organizations that live, work and visit our downtown," according to LDP officials. "Last year, we organized or collaborated to hold the Summer Craft Fair, Welcome to the Neigh-

borhood, Fall Festival, Market Street Mask-A-Rade and Miracle on Market Street. In addition to holding events that bring people downtown, our Partnership created and continues to sustain the Make Market Street More Beautiful program. People come from all over to see the beautiful summer flower baskets then come back again to enjoy the greens and lights of winter from the Lewisburg in Lights program. And if that isn't enough, LDP is one of the main collaborators in Live! from Lewisburg live musical performances, including the Live from Lewisburg Variety Show. Finally, we have partnered with the PA Council on the Arts to provide art programming and services at The Piers and with DCED to obtain plans for wayfinding & pedestrian safety projects in downtown Lewisburg."



U.S. Sen. Bob Casey, center, recently stopped in at Susquehanna Fire Equipment Co. in Dewart to take a tour and congratulate them on being named the U.S. Small Business Administration's Eastern Pennsylvania District Office's 2022 Family-Owned Small Business of the Year. From left, are: Maureen Hauck of the Bucknell SBDC; Seth Foust, SFEC VP; Casey; Keith Foust, SFEC President; and Steve Stumbris of the Bucknell SBDC, which nominated SFEC for the award.



Recently, Tina Kuhns, CEO of Kelsey's Dream, took advantage of a nice day to deliver snacks to Geisinger's Childlife Department. Kelsey's Dream created the snack program in 2007 for children with cancer that have appointments at the hospital in Danville. The children select snacks, juice boxes, or if they are there for all-day treatments or procedures, they can select Kraft Macaroni and Cheese, oatmeal or Chef Boyardee microwaveable meals. The medical team said the kids really look forward to selecting snacks during their appointments.

We're All About Building Relationships.



If you are looking for a place to call home and feel you are more than just a number, consider Pinpoint for all of your banking needs! A Member-owned and Member-Driven financial institution making local lending decisions with you in mind!

Online and mobile services available as well as more than 5500 shared branch locations and 30,000 surcharge free ATMs!

If you have a child or grandchild in a Northumberland County School District you can join!

Locations in Milton and Lewisburg!



Pinpoint
FEDERAL CREDIT UNION

www.pinpointfcu.org
P: 570-742-3903

BETTER TOGETHER



Speeds
— up to —
1 GIG



Plume®

Whole-Home
Wi-Fi System



SERVICE ELECTRIC
CABLEVISION

secv.com/internet • 800.522.2389



BY THE NUMBERS...

*As of publication time

At this point in the year, the Central PA Chamber maintains a member retention rate of **94** percent.

Each year, our Annual Meeting draws around **200** people representing several dozen members.

We're looking for **1** great person to join our team! Could it be you? Turn to page 17.

Join us at these upcoming events!

BREAKFAST BRIEFING

7:30 to 9 a.m. Friday, Aug. 19 @
the Central PA Chamber of Commerce,
30 Lawton Lane, Milton.

Free to Attend - **Registration is Required**

Sponsored by:



CENTRAL PA BUSINESS & EDUCATION ASSOCIATION Seminar & Training Series

Building Your Business with Digital Media Marketing

12 to 1 p.m. Wednesday, Aug. 31
Central PA Chamber of Commerce, 30 Lawton Lane, Milton
Cost: \$15 (includes lunch)

Register: www.centralpachamber.com/events

Presented by:



CENTRAL PA BUSINESS & EDUCATION ASSOCIATION Seminar & Training Series

PPL Business Energy Efficiency Program

11 a.m. to 12 p.m. Thursday, Sept. 1
Central PA Chamber of Commerce, 30 Lawton Lane, Milton
Cost: Free

Register: www.centralpachamber.com/events

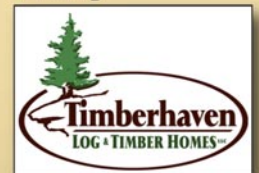
Presented by:



CENTRAL PA CHAMBER OF COMMERCE INSIDE JOBS

10 a.m. to 12 p.m. Wednesday, Sept. 21
@ Timberhaven Log & Timber Homes
1081 Salem Church Road, Middleburg

Featuring:



- A behind-the-scenes tour of the facilities
- Light lunch to follow
- Meet the Timberhaven team

Inside Jobs offers members a chance to tour facilities of fellow businesses/organizations.
Find tour details and register @ www.centralpachamber.com/events.

**Reliable
Glass**
Construction Inc.



Custom glass installation for any home or business
reliableglassco.com | 570-672-2518

**T-Ross Brothers
CONSTRUCTION INC.**



The leader in the construction industry for more than 60 years.
A team you can trust to build with honesty and integrity.
trossbrothers.com | 570-524-6411

Building for the Future



Does your home or business
need a new roof?
Get your estimate today!
570-522-0042
bend-fab.com