

It's YOUR BUSINESS

www.centralpachamber.com

Volume 6, Issue 9 - September 2021



Making a Shift,

pg. 3



Board of Directors

Ron Mackley - Chair iHeartMedia	Lennea Brown - Vice Chair Heritage Springs Memory Care
Chris Pinchak - 2nd Vice Chair Heaven's Best Carpet Cleaning	Cheryl Rheppard - Treasurer USG
Alison Hall The UPS Store	Joel Harris The Salvation Army
Skyler Herb Skyworks Equipment Rental	Andrew Hertzler XW Construction
Rob Jones Milton Public Library	Brad Lawton Lawton Insurance Agency
Lauren McDonald The Wealth Factory	Ashley Parrish First Commonwealth Bank
Todd Ross T-Ross Brothers Construction	Chenelle Shaner Nature's Medicines
Adam Wolfe Pivot Physical Therapy	E. Terry Baldwin - Solicitor Baldwin & Baldwin

Staff

Tea Jay Aikey - President & CEO tjaikey@centralpachamber.com
Jeff Shaffer - Communication Director jshaffer@centralpachamber.com
Michael Porter - Education Coordinator mporter@centralpachamber.com
Jessica Williams - Finance & Membership Director jwilliams@centralpachamber.com

The Inside Scoop



There is a leader in each of us, and several dozen people in our area now have a better understanding of what it takes.

Leadercast 2021 returned after a COVID-based hiatus, and it didn't disappoint! You can catch up on the highlights and captured moments in our cover story, starting on the next page.

Also inside, we offer a preview of two of our speakers at our next big events - one being the Legislative Event and then our Annual Meeting just two weeks later. You'll find both on page 11. We're excited to be back at the Country Cupboard where we haven't hosted an event since February 2020. We're equally excited for this speaker to be local state Rep. Lynda Schlegel-Culver, who has a variety of topics she wants to discuss and will open the floor to your questions.

We also proudly introduce the keynote speaker for our Annual Meeting. We had a chance to meet with Billy Robel recently, and we look forward to what he has to say. His perspective on recovery should be able to reach all attendees, considering what we've been through collectively over the last year and a half.

It has been ribbon cuttings a plenty for us over the last several months, and it continued into August. See the three latest businesses to make the cut on page 14.

This edition of IYB is also loaded with new members (starting on page 4), member events (starting on page 6) and members recognized for their hard work and new appearances at member business, starting on page 12.

We're always happy to share in your good news as you help lead our communities into the future.

There is all of this news and so much more! Enjoy the issue!

Jeff Shaffer, Editor
Communication Director
jshaffer@centralpachamber.com



A&A Construction and Services
Ann Hilliard - RE/MAX Bridges
Backyard Broadcasting of Pennsylvania
Century 21 Mertz & Associates
Coldwell Banker Penn One Real Estate
Contrast Communications
Davis, Davis & Kaar
Decal Dynasty
Evangelical Community Hospital
Green Ridge Graphics
Heaven's Best Carpet Cleaning
Hosterman Photography & Design
i3 Point-of-Sale
iHeartMedia
Interaction Dynamics Group
Jersey Shore State Bank
La Primavera Italiano Ristorante
Lawton Insurance Agency
Lewisburg Pharmacy
LIVIC Civil
Mifflinburg Bank & Trust
Milton Savings Bank

North Central Sight Services
North Shore Railroad
On Fire Promotions
PenTeleData
PPL Electric Utilities
Raceway Mobile Storage
Riverwoods Senior Living Community
Safeguard Business Systems
Service 1st Federal Credit Union
Service Electric Cablevision/SECVs
Seven Mountains Media
Sunbury Broadcasting Corporation
Susquehanna Fire Equipment Company
Susquehanna Valley Limousine
T-Ross Brothers Construction
The Daily Item
The Standard-Journal
The Wealth Factory
Unique Inspirations Limited
Watson town Dental
Weaver Wireless Consultants

The President's Club is an exclusive sponsorship program created to prominently recognize companies that contribute to the Central PA Chamber over and above their annual membership investment. For more information, call 570-742-7341.

It's Your Business Deadlines

October Issue

News/Ads Sept. 15 -- Flyer Inserts Sept. 20

Interested in advertising in this publication?
Contact Jeff at jshaffer@centralpachamber.com.

Find FREE copies of *It's Your Business* at these
Chamber member locations (**availability may vary**):

Lewisburg

Country Cupboard ■ Lewisburg Borough ■ Lewisburg Hotel
Lewisburg Pharmacy ■ McCann School of Business & Technology

Mifflinburg

A+ Office Outlet ■ Abe's Custom Woodworking

Milton

Arrowhead Drive-Inn Restaurant ■ Baldwin & Baldwin
Central Vision Eyecare ■ Milton Public Library ■ Pinpoint Federal Credit Union
The Breaking Bread Company

Northumberland

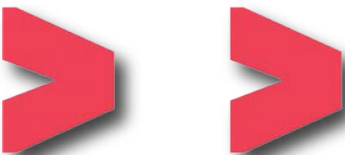
RE/MAX River Valley Realty ■ W and S Distributors

Sunbury

Eclipse Craft Brewing ■ Sunbury City Hall

Watson town

Watson Inn



More than 50 in-person attendees of the Central PA Chamber's Leadercast 2021 - Shift host site watch one of many world-renowned speakers on the big screen at the Silver Moon Banquet Hall, Lewisburg. The photos included in this story, and on the cover, are by Ronald Aunkst of PhotoWhere Photography, Milton. Those pictures include Chamber President & CEO Tea Jay Aikey firing up the crowd, Dr. Kevin Sensenig of Interaction Dynamics Group serving as event co-emcee, and taking a lunch break during a full day of events.



Making a Shift

LEWISBURG - More than 60 individuals in the area took the time on Aug. 11 to maximize their growth potential for the day by attending the local host site for Leadercast 2021 - Shift.

It was the second time in three years that the Central PA Chamber organized a local venue for the Leadercast event - known to be the largest one-day leadership training in the world - and this time there was even the option of attending virtually from the comfort of a home or office.

Via a live simulcast, participants heard from a dozen speakers with various backgrounds and upbringings, sharing personal stories and advice on growing as a leader at any level.

"Very engaging topics," wrote one attendee on a post-event survey. "It exceeded my expectations."

The sentiments would be shared by many as nearly everyone who participated indicated Leadercast was worth taking part in, again, next year if given the opportunity.

"Leadercast 2021 was a remarkable triumph for the internal team who worked tirelessly to secure, promote and host the event," said Tea Jay Aikey, President & CEO. "The post event comments from attendees who were members and non-members were just incredible."

"We're thrilled to be able to have invested in our region's leaders by

hosting Leadercast this year."

The "Shift" theme carried throughout, with the speakers encouraging listeners to be bold in this new era of change.

"Marry the mission, date the model," said longtime Leadercast speaker Andy Stanley, a communicator, pastor and author. "If you're not willing to change things up, he said one should let the next generation lead the way in innovation. Advancements are moving rapidly, Stanley added, including a 10-year leap in e-commerce, due to the constraints stemming from COVID-19.

Motivation took center stage as well. "Imagine if you treated every customer as your first one," said Liz Bohannon, an author, founder of Sseko Designs, and a powerful story teller.

While some speakers focused on innovation, tenacity and grit, others, like Bohannon, reinforced how you treat others can affect your life.

"We're all the same in football," said David Baker, President & CEO of the Pro Football Hall of Fame. "And, life after football is even more important."

Baker was followed up by one such HOF player, Chris Carter, who

Leadercast
shift

See **"SHIFT"** (on page 15)



Quality Collision Repairs on
All Domestic & Foreign Cars & Trucks
Alignment Specialists • State Inspection
Towing & Rollback Service

47 Apple Street • Milton, PA 17847
Phone: (570) 742-9627

Davis, Davis & Kaar

Attorneys at Law

*Wills & Estate Planning * Real Estate *
*Family Law * Business Law * Personal Injuries *

37 N. Arch Street, Milton, PA
P.O. Box 319

Phone: 570-742-8777 Fax: 570-742-6155

New Members

W & L Collision Center
3819 N. Susquehanna Trail
Shamokin Dam, PA 17876
570-473-3432
wlsubaruccc@gmail.com
Shaun Regan - General Manager
www.wandlcollision.com

We are one of the Valley's premier collision centers located in Shamokin Dam. We take pride in servicing all MAKES and MODELS. We are family owned and operated and take pride in doing a job right the first time and making any vehicle look like new again and back to manufacture specifications. If you have been involved in an auto accident or need repairs to your current vehicle, we would be happy to give you a FREE estimate. Come see us at our brand NEW facility in Shamokin Dam next to our NIS-SAN dealership. We have drive-up, climate controlled estimating bays, and we offer loaner vehicles to our customers when their vehicle is being serviced.

Heritage Springs Memory Care - Montoursville
878 Old Cement Road
Muncy, PA 17756
570-935-0938
Eanthyony@heritagespringsmemorycare.com
Emily Anthony - Executive Director
www.heritagespringspa.com

A specialized senior living community, serving the needs of seniors with memory impairments such as Alzheimer's Disease and Vascular Dementia. Our community is the only type of its kind in the area.

Apex Coaching Strategies
800 Park Drive
Sunbury, PA 17801
570-898-0933
apexcoachingstrategies@gmail.com
Peggy Reichenbach - Owner
Individual and group coaching.

Lifting Little Lives
P.O. Box 138
West Milton, PA 17886
570-238-0077
liftinglittlives@gmail.com
Ashley Parrish - President
www.liftinglittlives.org

Lifting Little Lives is a registered 501(c)(3) non-profit organization. Our mission is to enhance the lives of ill and/or disabled children in our local community. We cover six counties including: Northumberland, Snyder, Union, Lycoming, Montour and Columbia. We raise funds through entertaining benefits, sales of T-shirts and other items, sponsors and the great help of our supporters and members. If you know someone who could use our help, please, have them contact one of our members.

Apex Homes of PA
7172 Route 522
Middleburg, PA 17842
570-837-2333
lkuhns@apexhomes.net
Lynn Kuhns - President
www.apexhomesofpa.com

Manufacture of modular custom single family homes, commercial and multi-family structures. Located in Middleburg, we ship product to 14 states, north to Maine and south to North Carolina.

Accepting Nominations for 2022 Board of Directors

As a member of the Central PA Chamber of Commerce, you have the opportunity to elect the organization's next directors, who will serve three-year terms beginning Jan. 1, 2022.

The Chamber is now accepting nominations from the membership to fill six open positions on the Central PA Chamber of Commerce Board of Directors.*

Nominations must be made by Sept. 15 and can be e-mailed to the nominating committee at mporter@centralpachamber.com.

The committee will prepare the slate of candidates to be published in the November issue of *It's Your Business*.

One ballot will be e-mailed on Nov. 12 to each member business' primary contact. Ballots will be accepted until close of business on Nov. 19.

The nominating committee will meet during the first week of December to count ballots. Vote tallies will be presented to the board at the Dec. 9 meeting for certification.

New board members will be contacted and given details for their introduction at the first board meeting to be held in January 2022.

CENTRAL PA
 CHAMBER OF COMMERCE

***Eligibility requires you to be a member in good standing. Learn about other qualifications at www.centralpachamber.com/qualifications.**



Member Spotlight



Mission Autism Clinics

What makes your business unique?

Our in-clinic, one-on-one therapy.

How do you market your business?

We partner with other therapists as well as non-profit organizations to make sure the families have all of the resources they need.

What is your mission statement?

Your child's achievement is our mission.



Harry Hinkle, Director of Community Outreach

info@missionautismclinics.com

(888) 726-4774

www.missionautismclinics.com

We provide the highest quality, individualized ABA therapy for children with autism.

How many people do you employ?

60

Advice to those who own a business?

Do not give up when things start to get tough or don't go your way.

Finish this sentence – "On a day off I..."

Spend time with family.

What are the top 3 company priorities you focus on?

Culture, culture, culture

What are the characteristics you look for in employees?

Works hard, flexible and buys in to a team first mentality

What philanthropic causes does your business support?

Autism.

Bob & Debbie Showers, Owners

info@abeswoodworking.com



416 Chestnut St., Mifflinburg

www.abeswoodworking.com

What makes your business unique?

We will help you create your gift for that special person/occasion. A unique piece that cannot be purchased in a big box store.

As a custom shop, with all handmade items, we build wood products that conform to your imagination. We've added laser glass products and 3D printing.

What is your mission statement?

Our mission is to provide a finished product that displays your creativity combined with our creativity and workmanship to build/ craft a product that will last for generations to come.

Advice to those who own a business?

Businesses are created from dreams and hard work. Hold on to your dreams, they come from the heart!

Finish this sentence – "On a day off I..."

Work at home, spend time with family/ grandchildren and enjoy some TV.

Words to live by?

The choices you make today create your destiny tomorrow! Kindness and respect for others will take you far.

What are the top 3 company priorities you focus on?

1) Customers: Without customers you don't have a business.



2) Next generation: Teach the grandchildren how to use their creativity and get them excited to want to learn the equipment. We hope Abe's Custom Woodworking will be a blessing to their futures one day.

3) Be a Blessing: To our family, our church and our community.

What philanthropic causes does your business support?

We give money to our church and have donated custom made items for special events and non-profits.



What makes your organization unique?

We are the only professional puppet organization in the area that travels and has their own building.

How do you market your business?

Through radio, print media, posters



Lisa Derr, General Manager

puppets@hiskindomkidz.org

11 E. Third St., Watsonstown

www.hiskindomkidz.org

and flyers, social media and our web site.

What is your mission statement?

Presenting quality programs through excellent puppetry, which encourages others to make a difference and helps us show people they matter.

How many do you employ?

1 full time, 1 part time

Advice to those who own a business?

Be prepared for challenges everyday whether positive or negative.

Finish this sentence – "On a day off I..."

Spend time with the Lord asking for wisdom and guidance for Kingdom Kidz and help me be the leader he has called me to be. I also get chores done and errands ran.

Words to live by?

Seek God in all daily decisions.

What are the top 3 company priorities you focus on?

Presenting quality programs, making a difference, showing people they matter.

What's Happening



45th Annual
**MILTON
HARVEST
FESTIVAL**
Sept. 10-18

www.miltonharvestfestival.com

Camp Koala

DAY CAMP
FOR GRIEVING KIDS

Sept 18th 2021

For kids ages 7-18 who have experienced a death
Saturday, September 18th, 2021, from 10-5pm. Lunch and all
supplies are included, there is no cost to attend.

Location: BSA Camp Karoondinha, Union County
225 Thomas Dam Road, Millmont, PA

Please note that due to Covid-19, we will be practicing social distancing,
holding activities outdoors and wearing masks. If your child cannot wear
a mask while at camp, please do not sign up. We feel this is in the best in-
terest of our campers and volunteers, thanks for your understanding.

Activities are fun! We have fun outdoor activities, including Art
Therapy, lake activities, campfires and more!
Meet other grieving kids too!

For an application and more information, please visit
www.campkoala.org/campers, call 717-258-1122
or email director@campkoala.org

Space is limited, please apply early.

CENTRAL PA CHAMBER OF COMMERCE INSIDE JOBS

11 a.m. Wednesday, Oct. 7
@ Strong Spas

3204 Point Township Drive, Northumberland

Featuring:



- Park on Danville side of the plant
- Wear closed-toe shoes
- Tour to last one hour with lunch to follow

Inside Jobs offers members a chance to tour facilities of fellow businesses/organizations.
Find tour details and register @ www.centralpachamber.com/events.

BREAKFAST BRIEFING

off-site! 7:30 to 9 a.m. Friday, Oct. 15 @ *off-site!*
the Covation Center
217 West 4th Street, Williamsport.

Free to Attend - **Registration is Required**

Sponsored by:



Celebrating the newest location and renovations!
Open house from 4 to 6 p.m. with light refreshments!

Ribbon Cutting
RE/MAX



5 p.m. Thursday, Oct. 7 @ 2006 W. Market St., Lewisburg

Find the latest
member news and events on our
Facebook page!



COME JOIN US AT THE FOLLOWING EVENTS

Every Day – We have a clothing and shoes **ONLY** bin at the puppet home as a fundraiser. It is a HandUp bin. It is located behind the puppet home at the back alley.

Miss Curly's Right Hand Club – Fundraiser for a monthly subscription of \$15 or more to help pay for our monthly utilities and insurances. Go to:
<https://hiskingdomkidz.networkforgood.com/projects/119681-2021-giving>

Amazon Smile - If you use Amazon Smile, you can help us while shopping. Go to Smile.Amazon.com click on Kingdom Kidz and we will receive a donation from Amazon Smile. No extra monies taken from you.

Saturday, September 11 – BALLOONFEST, Air Show and So Much More, Lycoming County Fairgrounds
 Fairground Drive, Hughesville, PA 17737

Saturday, September 18 – Milton Harvest Festival Parade.
 Parade starts at 1:00 pm

Saturday, September 25 – Montandon Baptist Church,
 257 Main St, Montandon, PA 17850. Ice Cream Social, with games and crafts.

Sunday, September 26 – Faith UMC Church, 203 Arch St.
 Sunbury Pa 17801, at 10:15 am for Church Service

Kingdom Kidz OPEN HOUSE Monday Sept. 27, from 4-8 pm at the puppet home
11 E, 3rd St., Watsonstown.

Quality Family Programming
www.hiskingdomkidz.org e-mail: puppets@hiskingdomkidz.org
 Follow us on Facebook 570-838-3133

Date	Event	Location	Time	Cost
9/9/21	Top 5 OSHA Safety Training Topics - Requirements & Best Practices to Safety & Health	Webinar	2 to 3 p.m.	Free
9/15/21	Manufacturing eCommerce Success	Webinar	11 a.m. to 12 p.m.	Free
9/30/21	Lean Manufacturing Level One Certification - Williamsport	Genetti Hotel & Conference Center, 200 W. 4th St., Williamsport	8 a.m. to 4:30 p.m.	\$1,495

S B D C
 PENNSYLVANIA
Small Business Development Center
Bucknell University
570-577-1249
www.bucknell.edu/sbdc

Date	Event	Location	Time	Cost
09/13/21	ARC Presents: Ready Rating: Creating an Emergency Action Plan for Your Small Business	Online (Live)	12 to 1 p.m.	Free
9/14/21	Patent 101 and Other Intellectual Property for Small Business	Online (Live)	9:30 to 11 a.m.	Free
9/29/21	Maximizing Ecommerce Sales: Driving Traffic & New Sales via Website and Social Media	Online (Live)	9 to 10 a.m.	Free



American Red Cross

The need is constant.
 The gratification is instant.
 Give blood.™

redcrossblood.org | 1-800-RED CROSS

Blood Drive Central PA Chamber of Commerce

Smith Room – 30 Lawton Lane - Milton

September 29th, 2021

10:00 AM – 3:00 PM

Call 1-800-Red Cross (1-800-733-2767) or visit redcrossblood.org and enter: PAchamber to schedule an appointment

 **SUNBURY SANDWICH STROLL**
 Saturday, October 9th | 11am-1pm

IMC INNOVATIVE MANUFACTURERS' CENTER
Lauri Moon
Manager, Training & Outreach
570-329-3200 ext 8085
www.imcpa.com/events

"New Members" (from page 4)

Calculated Design Company
 906 Old Route 15
 New Columbia, PA 17856
 570-246-3599
Calculatedesign@mail.com
Cheri Nicholas - Owner/Operator
www.facebook.com/calculatedesign
Body, mind and skin health and wellness spa.

Northeast Training Institute
 1025 Alliance Park Drive
 Bloomsburg, PA 17815
 570-993-4098
lcfrace@northeastti.com
Larry Frace - CEO
www.northeasttraininginstitute.com
State-of-the-art training facility for building related trades. Courses and training given for home inspectors, building officials, contractors, realtors and much more.

Intrada Technologies
 31 Ashler Manor Drive
 Muncy, PA 17756
 800-858-5745
jhaywood@intradatech.com
James Haywood - Project Coordinator
www.intradatech.com
Intrada Technologies delivers strategic, innovative, efficient, and effective solutions with technology. Think of Intrada Technologies as an instant expansion of your IT Department. We build trusted partnerships with every client. Focusing on your success, we customize our services to fit your needs. For more than 20 years, Intrada Technologies has been exceeding clients' expectations in information technology, web site design and development, hosting and cloud and digital marketing services. Technology-based and customer service driven, Intrada Technologies supports clients in Pennsylvania and around the U.S. How can we help you?

Compu-Gen Technologies
 515 W. Fourth St.
 Williamsport, PA 17701
 570-323-8324
Vic@compu-gen.com
Victor Borgess - President
www.compu-gen.com
Computer consultants, networking, LED digital signs, alarm systems, point-of-sale and phone systems.

Skyworks Equipment Rental
 6680 Allentown Blvd.
 Harrisburg, PA 17112
 717-585-9703
sherb@skyworksllc.com
Skyler Herb - Sales and Marketing
www.skyworksllc.com
Our employees live, work and give back in the communities in which they work. The money our branches generate doesn't support a large corporate office, but instead stays within the community where the branch is located. We have a proven business model that is supported by our positive customer feedback and our achievements. Skyworks is listed 35th in the RER 100 top equipment rental companies. Skyworks has a large, modern fleet of over 10,000 pieces spread across its 19 branches. We strive to have the largest variety of equipment available to you at our locations. Although Skyworks is a growing company, we maintain our small family environment. In this way, we ensure quick response times to our customers. Our goal is to provide you the best possible customer service.

First Commonwealth Advisors - Scott M Frost
 20 S. Main St.
 Muncy, PA 17756
 570-316-3880
sfrost@fcadvisor.com
Scott Frost - Financial Advisor
www.fcbanking.com/personal/investment-brokerage-services/meet-our-financial-advisors/scott-frost/

Saving and protecting your money now is one of the most critical actions you can take in building the foundation for your financial future. Whether you need to start an investment plan, pass on a legacy, or protect your family's assets, we want to make sure that you have the right advisor and the right investment plan. Together we can build the financial future of your dreams. No investment services plan is the same because every customer's life is different, and we prefer it that way. Our team is able to approach each investment plan with creativity backed by a disciplined approach and years of experience. Your goals may be managing your wealth, passing on your legacy, saving for a major purchase, planning your retirement and/or leveraging your retirement income.

*Find the latest member news on our
 Facebook page and at
www.centralpachamber.com.*

Membership Renewals

(As of Aug. 19, 2021)

ADERS Inc. (Autism
 Diagnostic Evaluations
 Resources & Services)
 Angela Hummel Consulting
 Backyard Broadcasting
 of Pennsylvania
 Bowen Agency Realtors
 - Lewisburg
 Bowen Agency Realtors
 - Selinsgrove
 Bryden & Kessel Family
 Dentistry
 Comfort Keepers
 - Selinsgrove
 Image One Technologies
 Keystone Power Washers
 & Auto Detailing
 McCann School of Business
 & Technology
 Mostly Mutts, Inc.
 North Central Sight Services

Northumberland County
 Economic Development
 OPTIMO Information
 Technology, LLC
 Roto-Rooter Sewer & Drain
 Seven Mountains Media LLC
 Sunsational Family
 Campground
 Susquehanna Valley CASA
 Susquehanna Valley
 Community Education
 Project
 The ARC Susquehanna
 Valley
 The Campus Theatre
 The Forest House Hotel
 The Wealth Factory Inc.
 Universal Advertising
 Associates, Inc.
 Verizon Wireless - Russell
 Cellular - Danville
 Verizon Wireless - Russell
 Cellular - Mifflinburg



DECAL APPLICATION & REMOVAL

Fleet & Truck Markings,
 Custom Striping, Labels, Magnetic Signs,
 Contractor Job Site Signs, Posters,
 Window & Wall Graphics, Building Letters

A Quality Service

decaldynasty.net • 17355 Old Turnpike Road (Rt 45), Millmont, PA 17845

Celebrating the new location of the corporate offices! Open house from 3 to 7 p.m. with ribbon cutting ceremony at 4 p.m. Wednesday, Oct. 13.

Open House & Ribbon Cutting

TRB
T-ROSS BROTHERS
CONSTRUCTION INC.

CENTRAL PA
CHAMBER OF COMMERCE

2733 Route 45, Milton (former Montandon Elementary)

BREAKFAST BRIEFING

Off-site! 7:30 to 9 a.m. Friday, Oct. 29 @ *Off-site!*
the Bucknell Golf Club's 1846 Grill,
366 Smoketown Road, Lewisburg.

Free to Attend - **Registration is Required**

Sponsored by:

1846 GRILL **BUCKNELL GOLF CLUB** EST. 1930

MA
The Manufacturers' Association

IN PARTNERSHIP WITH:
CENTRAL PA
CHAMBER OF COMMERCE

FREE SAFETY TRAINING

Topics include:

- Warehouse hazards overview
- Pallet stacking
- Robotic palletizing systems/automation
- Material handling & storage
- Hazard communication
- Musculoskeletal injuries
- Electrical safety
- Respiratory safety & PPE

Trainings will be held live throughout the region, at The Manufacturers' Association, your location or virtually!

Available in Spanish

To attend: Email LauriM@imcpa.com
Call (570) 329-3200 x8085 or
Visit mascpa.org/2020-sh-safety-training

This material was produced under grant number SH-99016-SH0 from the Occupational Safety and Health Administration, U.S. Department of Labor. It does not necessarily reflect the views or policies of the U.S. Department of Labor, nor does mention of trade names, commercial products, or organizations imply endorsement by the U.S. Government.

CAMERON PARK Fall Job Fair

September 9th, 2021
1-3 pm
Cameron Park
152 Market Street
Sunbury, PA 17801



Registration Fee \$25!

Visit www.eventbrite.com to register!

Please plan to bring your own tables, chairs, & canopies.

Parking will be available at the rear of the
Municipal Building (225 Market Street)

PA CareerLink*
Northumberland/Snyder/Union Counties
225 Market St., 3rd Floor
Sunbury, PA 17801
P: 570.988.7304 TTY: 570.286.8293
*FREE PARKING at rear of building

Pennsylvania CareerLink™
A proud partner of the AmericanJobCenter network

Auxiliary aids and services are available upon request to individuals with disabilities. Equal Opportunity Employer/Program

Creative Teamwork. Brilliant Solutions.

Whether you need a creative way to stimulate your business with web, print, apparel, or promotional items, allow the dedicated team at AdOne to help increase your brand awareness! We deliver the project with competitive pricing and fast turn times.

AdOne
advertising & design

print design web development apparel promotional items display/signage

570-286-1111
mypromotionalneeds.com

Time with Tea Jay

I hope to see you there!

"Steady persistence in a course of action, a purpose, a state, etc., especially in spite of difficulties, obstacles, or discouragement"...that is the Merriam-Webster definition for perseverance.

It has also been the ongoing theme of the Central PA Chamber this year, and it will be the underlying theme for our upcoming Annual Meeting and Awards Ceremony.

The team and I are incredibly excited to host our members, guests and dignitaries on Thursday, Sept. 30 at the Silver Moon Banquet Hall in Lewisburg.

The Annual Meeting and Awards Ceremony has become a much-anticipated event and offers a special level of curiosity to regular attendees and first-time attendees alike. What will the décor be, what will the centerpieces be, what will the team be wearing, who will the speaker be, how will the National Anthem be delivered, but most pondered who will be receiving Chamber Impact Awards?

This event has become "THE" Annual Meeting of Annual Meetings. Even though the event date had to be moved from February to September, be rest assured it will not disappoint.

While the level of surprise as to whom the Impact Award recipients will be is a "wow" factor, there also may be some other wows. To say the past year and more has been a challenge for businesses and non-profits is putting it lightly. However, remember this - where there is no trouble, there is no triumph. Only true faith can let one rejoice in the midst of trouble. Faith sees the glory of the future in the gloom of the present.

If you haven't yet registered for the Annual Meeting and Awards Ceremony on Sept. 30, I strongly urge you to do so now! You can easily register via our web site

(www.centralpachamber.com/events) or simply call the office at 570-742-7341. Everyone is welcome and encouraged to attend.

If you want to experience heartfelt leadership, passion and transparency plan to join us! The event is just two hours in length, but it will be 120 minutes that you will never want to forget. The smiles, hugs, handshakes, laughs, tears, shock and humility are at its best.

"People do not buy goods and services. They buy relations, stories and magic." - Seth Godin

Tea Jay

Tea Jay Aikey
President & CEO

tjaikey@centralpachamber.com



Breakfast Briefing



Great crowd at the Aug. 13 Breakfast Briefing, sponsored by Susquehanna Computer Innovations! Ryan Workman, Marketing/Account Executive, discusses the variety of technology services the company has offered over the last 20-plus years. Learn more at: www.sciatwork.com.

The Central PA Chamber holds Breakfast Briefings monthly at its location, giving members and guests the opportunity to network, learn more about each other and the Chamber.

Breakfast included!

Register at www.centralpachamber.com.

LOCAL BANKING

1920 **101** 2021
YEARS STRONG

ASK HOW
YOU CAN GET
PRE-QUALIFIED!

- ▶ Mortgage and Construction Loans
- ▶ Home Equity Loans
- ▶ Personal and Collateral Loans

ALL LENDING DECISIONS
MADE LOCALLY!

570-742-8541



Member
FDIC



milton

SAVINGS BANK

CALL 570-742-8541 OR VISIT US TO GET STARTED

80 Broadway Street | Milton, PA 17847 | www.miltonsavingsbank.com

SOLD

Don't worry we've done this a million times

RE/MAX
BRIDGES

2006 W. Market St.
Lewisburg, PA 17837
570-768-4792

RE/MAX
RIVER VALLEY REALTY

166 Eighth St.
Northumberland, PA 17857
570-473-8888

RE/MAX
BRIDGES

210 Main St.
Watson, PA 17777
570-538-2582

Billy Robel, Recovery Campus Pastor for Christ Wesleyan Church, will be the keynote speaker at the Central PA Chamber's Annual Meeting & Awards Ceremony on Sept. 30 at the Silver Moon Banquet Hall, Lewisburg.



Speaker announced

LEWISBURG - Billy Robel, Recovery Campus Pastor for Christ Wesleyan Church, will be the keystone speaker at the Central PA Chamber's Annual Meeting & Awards Ceremony from 11:30 a.m. to 1:30 p.m. on Sept. 30 at the Silver Moon Banquet Hall, Lewisburg.

Robel, a certified recovery specialist, has been part of the church for the past 20 years. Within the early years of his faith, he felt called into the ministry, and has served and ministered in the community with the White Deer and Gaudenzia Recovery Ministries.

Robel joined the staff at CWC this year, serving those who struggle with addictions and their families.

Robel has titled his talk: "Pushing through adversity to reach our purpose. How our individual

stories affect the way we do business."

The Annual Meeting would not be possible without many wonderful sponsors. As of press time, they include: Service 1st Federal Credit Union, Meal Venue Sponsor; Evangelical Community Hospital and One Focus Property Management, Centerpiece Sponsors; Milton Savings Bank, The Daily Item, T-Ross Brothers Construction and Heritage Printing & Design, Award Sponsors; Susquehanna Fire Equipment Co., Favor Sponsor; The Wealth Factory and AdOne Advertising, Program Sponsors.

Food is by Feast of Flavor Catering. The cost to attend is \$35 for members and \$40 for non-members. Register now at: www.centralpachamber.com/events.

Legislative Event topics released

LEWISBURG - State Rep. Lynda Schlegel-Culver (R-108) will speak on a variety of hot topic issues at the Central PA Chamber's Legislative Event on Friday, Sept. 17.

For the first time since February 2020, the Chamber will be at Country Cupboard in Lewisburg, giving its members a chance to hear from and speak directly to elected officials. The event starts at 7:30 a.m. with a breakfast buffet, followed by the speaking portion at 8.

Rep. Schlegel Culver will discuss at least four topics of interest and allow time for an open "Q&A" session at the end of the event, which concludes at 9.

The Central PA Chamber has specifically asked her to provide a legislative update on the issues surrounding the employment and reemerging opioid crises. In addition, Rep. Schlegel Culver wants to share information pertaining to redistricting in Pennsylvania, as well as election reform.

"These issues go hand-in-hand, and people are concerned," she said. "We want this to be an open process and get people involved." The Legislative Event is sponsored by Thermal Product Solutions, New Columbia. The cost to attend is \$17. Register now at: www.centralpachamber.com/events.



State Rep. Lynda Schlegel Culver



Highly Visible Office/Retail Space Available In Downtown Lewisburg

1,000 SF+/- available for lease September 1 in this four unit commercial building. Space is newly renovated and features a large reception and open office space in front with two private offices in rear and two restrooms. Space was formerly a financial planner and adjacent units are occupied by apartments. Possible room for expansion.

Call (570) 975-5806 or visit online at rentalslewisburgpa.com/office

WHY US?

What our members are saying...

"I REMAIN A MEMBER DUE TO THE FRIENDLY STAFF AND HOW THEY CONTINUE TO GO ABOVE AND BEYOND TO HELP MY BUSINESS SUCCEED."

- Brad Lawton, Lawton Insurance Agency

CENTRAL PA
CHAMBER OF COMMERCE

faxing mailboxing storing packing
printing boxing freighting copying
direct-mailing delivering brochuring
designing flyerings shredding
brochuring receiving supplying
storing packing postcarding

Every ing for small business.
And, of course, shipping.

The UPS Store



Penn House Commons
325 N 10th St, Ste 400
Lewisburg, PA 17837

570.523.2611 Tel
store5918@theupsstore.com
theupsstore.com/5918

Members Recognized

Stahl Sheaffer Engineering

STATE COLLEGE - Stahl Sheaffer Engineering is celebrating 15 years in business and ongoing recognition as a top design firm. Based in State College, PA, the multi-discipline civil and structural engineering company has offices in four states as well as a geotechnical lab, and has provided engineering, survey and inspection solutions since 2006.

This year, Stahl Sheaffer also celebrates the firm's ranking as a top Mid-Atlantic design firm by Engineering News Records (ENR) for the fourth consecutive year. The recognition this year will be especially memorable, given the obstacles that were overcome.

"We are grateful for our team members, who have continued to provide timely and high quality service in spite of the challenges faced by our industry and our country over the past year and a half, as well as the continually evolving relationships that we have built with our diverse clients," said Jeff Sheaffer, Stahl Sheaffer Principal.

A diverse client base has been critical to weathering economic and industry fluctuations. Higher education, public transportation, municipal, private development, and energy markets have figured prominently in Stahl Sheaffer's growth. While Stahl Sheaffer's services, operations, and client relationships have expanded, the firm's company values – focused on exceeding client expectations and "people first" policies – have remained constant.

Stahl Sheaffer thanks their clients, business partners, employees, and all who helped the firm reach these milestones! Learn more about Stahl Sheaffer at www.stahlsheaffer.com.

Evangelical Community Hospital

LEWISBURG — Evangelical Community Hospital is pleased to welcome Stephen Wall, DO, as a member of the Medial Staff and part of the Pathology Group of Evangelical.

As a pathologist, Dr. Wall specializes in performing lab tests that analyze tissues, organs and body fluids for the purpose of assisting healthcare providers in reaching a diagnosis for treatment.

Dr. Wall received his Doctor of Osteopathic Medicine from Ohio University Heritage College of Osteopathic Medicine. He completed his Anatomic and Clinical Pathology Residency at Summa Health System Akron City Hospital in Ohio and his Cytopathology Fellowship at Geisinger Medical Center. As an undergraduate, Dr. Wall obtained his Bachelor of Science in Psychology at Northern Kentucky University.



Dr. Stephen Wall

Villager Realty

LEWISBURG - Sabra L. Karr, General Manager of Villager Realty in Lewisburg, is pleased to announce the real estate company's "Agent of the Quarter" Awards for the 2nd Quarter of 2021. Villager's "Agent of the Quarter" Award recognizes the contributions of the agents by their production, growth, new levels of personal achievement and community involvement.

"Villager is proud to recognize Jessica Herman of our Northumberland office as the Agent of the 2nd Quarter of 2021," Karr said. "Jessica is an extremely competent rental and property management agent, and continues to be one of our top sales persons in the Northumberland Office, too."



Jessica Herman

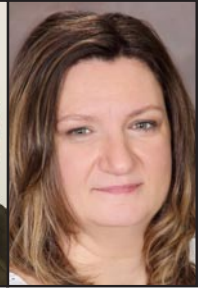
"When you're looking for an agent with many contacts, good customer reviews and a fine track record, Jessica fits the bill."

Nominated from the Lewisburg office was Terry Conrad, while Torie Livziey achieved the nomination in the Danville office.

"Available inventory remains tight," said Kaar. "But these agents have shown that knowledgeable and industrious is still a winning combination in an unprecedented market."



Terry Conrad



Torie Livziey

First Community Foundation Partnership of Pennsylvania

WILLIAMSPORT - The First Community Foundation Partnership of Pennsylvania (FCFP) recently appointed Sara Street as the Rider Park Manager. The vacancy was created by the retirement of Bonnie Mahoney who served in the role for more than eight years.

Street's educational background is in landscape architecture, ecological restoration, arboriculture and park management. She loves plants and has developed a "landscape eye." As she walks through the meadows and forest at Rider Park, she is constantly mentally editing plants, dreaming of native plants to add and removing the invasive species that compete for space and nutrients. Through her work with a local consulting forester, she has learned how to look at the forest and notice the successional trends and look for ways to improve reforestation. It has been her great fortune to have worked for the North Cascades National Park Service trail crew where she designed and built accessible and backcountry hiking trails.

As Rider Park Manager, Street will oversee the upkeep and development of the 867-acre natural area. Rider Park is the largest privately owned recreation area in Lycoming County and is open to the public daily from dawn until dusk. Street's work will enable visitors to connect with nature and experience the history and beauty that the region has to offer. Street will lead the Rider Park team of staff and volunteers to maintain over 10 miles of trail systems and facilities.

Rider Park is owned and operated by FCFP, which works to improve the quality of life in north central Pennsylvania through community leadership, the promotion of philanthropy, the strengthening of nonprofit impact and the perpetual stewardship of charitable assets. For more information on the programs and services offered by the Foundation, or to learn more about ways to make a difference in your community, contact the Foundation office at 570-321-1500.



Sara Street

Coldwell Banker Penn One Real Estate

LEWISBURG - Martha Barrick, broker/owner of Coldwell Banker Penn One Real Estate, has announced the office's monthly awards for the month of July.

The July agent of the month was awarded to Doug Wertz. He was also awarded the Listing and Sales agent of the month.

"Doug continues to put forth quality service and ex-



Doug Wertz

ceptional skills in every aspect of real estate," Barrick said. "We're extremely proud of him."

Coldwell Banker Penn One Real Estate is located at 331 Market St., Lewisburg, and can be reached at 570-524-7500 or www.coldwellbankerpennone.com. Coldwell Banker Penn One Real Estate has been serving the area for 35 years.

Mifflinburg Bank & Trust

MIFFLINBURG – Michelle Huey, community office manager of Mifflinburg Bank & Trust, Downtown Lewisburg, was one of four students who achieved honor student status from the Pennsylvania Bankers Association's (PA Bankers') 2021 Virtual Advanced School of Banking, July 18-23.

Honor students are selected based on outstanding work on six home extension problems' cumulative scores.

Huey has served the banking industry for over five years. As a community office manager, she manages the daily operations of the branch, sustains customer relations and promotes community involvement.

PA Bankers' Advanced School of Banking is a three-year program that teaches financial services knowledge and skills and paves the road for participants to become leaders at any level within their organization. The curriculum provides a greater understanding of the multiple banking disciplines and how those disciplines work together within the bank. It is analogous to 200-, 300- and 400-level college course study.

PA Bankers has been bringing banks and bankers together for more than 125 years to learn, grow, serve and engage with their peers, communities and lawmakers. The association has built a strong reputation as a leading advocate for pro-banking policies at the state and federal levels, as well as the delivery of quality education, products and services for banks of all sizes and their employees.



Michelle Huey

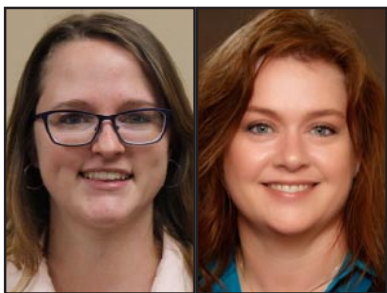
Service 1st Federal Credit Union

DANVILLE - Four Service 1st Federal Credit Union employees recently completed the Enhanced Financial Counseling Certification Program (FiCEP) through the CrossState Credit Union Foundation.

Chrissy Collier, Assistant Market Manager, Service 1st Lewisburg Office; Coleen Snover, Vice President Training & Development; Matt Gardill, Assistant Market Manager, Service 1st Mifflinburg Office; and Morgan Mattern, Assistant Vice President Mifflinburg Market, earned their Certified Credit Union Financial Counselor (CCUFC) designation by completing the program. The FiCEP program provides credit union professionals with the skills they need to help members achieve their financial goals.

This was the fifth group of Service 1st professionals to attend this program. To date, 25 Service 1st team members have earned their CCUFC designation.

For more information, contact Service 1st at 800-562-6049 or visit the credit union online at www.service1.org.



Chrissy Collier

Coleen Snover



Matt Gardill

Morgan Mattern

T-Ross Brothers Construction

MONTANDON - Ginnetta Reed was recently hired as the Marketing Director of T-Ross Brothers Construction, Inc.

Her responsibilities include developing a strategic marketing plan that will generate and retain clients for the construction company throughout northeastern and central PA. In addition, she is responsible for producing business content for advertisements and press releases, maintaining and designing the web site and social media channels, and actively seeking community engagements.

Reed previously worked at the Ronald McDonald House of Danville serving as the Director of Marketing and Events. Over the years at the local Ronald McDonald House, Reed developed a comprehensive development and marketing program, established and organized fundraising events, generated philanthropic support, and maintained and designed the web site and social media channels. Prior to her position, she served as a leader for the Geisinger Health Plan Family Room Campaign, which raised over \$200,000 for the Ronald McDonald House Family Room.

Reed received her Bachelor of Science Degree in Business Administration with a minor in Human Resources from Central Penn College of Pennsylvania. She is currently President of the Milton Rotary Club and a 2019 graduate of Leadership Susquehanna Valley.

In other news, T-Ross Brothers Construction was recently recognized by Metallic Building Systems with an Award of Merit in Metallic's 2021 contest for its National Building of the Year.

RitzCraft contacted T-Ross Brothers Construction for a design-build project based on T-Ross's past performance and their relationship with RitzCraft dating back nearly 50 years.

Together, management designed a new lunchroom facility at the Mifflinburg location. The new construction consisted of a vending café lunchroom, men's and women's locker rooms, foreman's offices and employee loft overlooking the lunchroom. A tower feature accentuates the front entry, which opens into the lunchroom and attention is drawn to the dramatic custom-built open stairs with river birch stair treads.

"Congratulations to everyone involved in the project," said Todd Ross, President of T-Ross Brothers Construction.



Ginnetta Reed

LIVE HIGH SCHOOL SPORTS

and Original
Local Programming

Exclusively on Service Electric Cablevision
Channels 508 HD | 8 SD | On Demand

secv8.com

Ribbon Cuttings



Congratulations to W&L Collision Center! We helped them celebrate the new facility July 21 with a ribbon cutting ceremony. Anyone familiar with the area will find them at the former K-Mart location at 3819 N. Susquehanna Trail in Shamokin Dam, located next to W&L Nissan. The renovations started in the fall of 2020, and the building includes 26 working bays, with air conditioning and free drive-up estimates. All makes and models of vehicles can be serviced there. For more information, visit: www.wandlcollision.com.

Cutting the ribbon is Robert Long, owner. He is flanked by, starting at left: Ron Mackley, iHeartMedia and Board Chair for the Central PA Chamber; Rob Long, co-owner; Robert; Andrew Long, dealer principal with his wife, Silvia, and their sons, London (back), Noah (front), twins Greyson (held by Andrew) and Jackson; and Tea Jay Aikey, President & CEO of the Central PA Chamber.

Congratulations to Landis Originals! We helped them celebrate their new store at 5 N. 3rd St., Lewisburg, with a ribbon cutting ceremony on July 31. Landis Originals uses cutting-edge technology to design and create personalized gifts, custom products and prototypes. Learn more at: www.landisoriginals.com. Cutting the ribbon are owners Andy and Katie Landis. Alongside them, from left: Tea Jay Aikey, President & CEO of the Central PA Chamber; Kilee Reynolds, Mason Reynolds, Andy and Katie, Brysen Landis and Nolan Reynolds. Also part of the Landis/Reynolds family, but not pictured, is Kaden Landis.



Congratulations to kinetic Business by Windstream! We helped them celebrate their new retail location on Aug. 6 with a ribbon cutting ceremony. An open house block party was held the following day at 20 S. 2nd St., Lewisburg. Windstream is one of the largest providers of telecommunications services in rural communities in the U.S. Learn more at: www.windstream.com/siteselector. Cutting the ribbon is Susan Schraibman, regional president in Ohio, Pennsylvania and New York. From left, are: Perry Koot, local manager; Stacy Richards, Union County Commissioner; Tea Jay Aikey, President & CEO of the Central PA Chamber; Jeanne Shearer, vice president of government affairs in Pennsylvania; Schraibman; Jeff Stauder, director of operations in Pennsylvania; Jordan Childers, retail manager; Shawna Cossin, regional marketing consultant in Ohio, Pennsylvania and New York; Bob Garrett, President & CEO of the Greater Susquehanna Valley Chamber; Dessa Hopkins, sales consultant; and Art Thomas, President of Meck- Tech, Inc.

"SHIFT" (from page 3)

was impacted mostly by those who told him they believed in him and looked out for him at a young age in a rough neighborhood. And, it's not just others you should lift up, but yourself as well. "I viewed myself with limited capacity," said three-time Emmy nominated actor Rainn Wilson from the hit TV show "The Office." "Don't!" The event raised more than \$7,000 for the Central PA Chamber, which wouldn't have been possible without its many attendees, supporters and sponsors.

The Venue Sponsors were Strong Spas and UPMC. Registration Sponsors were Graphite Grantworks and iHeartMedia - Williamsport. The Gift Sponsor was The Wealth Factory and Speaker Sponsors included Community Giving Foundation, Interaction Dynamics Group, Pinpoint Federal Credit Union and Service Electric Cablevision. The Central PA Chamber also partnered with Feast of Flavor Catering, Crickett Wireless (providing wifi access and a charging station) and PhotoWhere Photography, to capture moments from the day-long event.

There were a pair of emcees to keep the crowd engaged as they reflected on the speakers and subjects. One was Dr. Kevin Sensenig of Interaction Dynamics, known by many in the Central PA Chamber community, as well as Ian Keefer, a senior at Milton Area High School. Last school year, he completed the Chamber's Building Leaders for the Susquehanna Valley (BLSV) program and served as class speaker.

THANK YOU, SPONSORS!

Venue Sponsors



Event Partner



Registration Sponsors

Graphite Grantworks
iHeartMedia - Williamsport

Gift Sponsor
The Wealth Factory

Speaker Sponsors

Community Giving Foundation
Interaction Dynamics Group
Pinpoint Federal Credit Union

Additional Support By:

Crickett Wireless - Lewisburg
PhotoWhere Photography



Above, the group from Heaven's Best Carpet Cleaning stands in for a group photo. From left: owner/operator Chris Pinchak and his wife, Adrienne; Steve Clements and Heidi Tilman. Here, attendees also provided testimonials about their Leadercast experience, some which have been shared on the Chamber's IYBT program, available on YouTube and Facebook. Below, event co-emcee Ian Keefer, a Milton Area High School senior, converses with Kent Vonada, director of operations, and Chelsey Houseknecht, human resources, for Venue Sponsor Strong Spas. Vonada shared during the sponsor portion of the morning that the company has been making its own shift to improve its reputation in the community and continuing expansion.



As mentioned in the photo at left, kinetic Business by Windstream celebrated its new retail location in Lewisburg. As part of the celebration, they made a \$1,000 donation to the Donald L. Heiter Community Center at 100 N. 5th St., Lewisburg. The Windstream representatives holding the check, from left, are: Susan Schraibman, regional president in Ohio, Pennsylvania and New York; Jeff Stauder, director of operations in Pennsylvania; and Shawn Cossin, regional marketing consultant in Ohio, Pennsylvania and New York. The Donald L. Heiter Community Center strives to provide innovative programs that are educational, social and recreational and responsive to the needs of the community. Learn more by visiting: www.donaldheiter.org.

We're All About Building Relationships.

If you are looking for a place to call home and feel you are more than just a number, consider Pinpoint for all of your banking needs! A Member-owned and Member-Driven financial institution making local lending decisions with you in mind!

Online and mobile services available as well as more than 5500 shared branch locations and 30,000 surcharge free ATMs!

If you have a child or grandchild in a Northumberland County School District you can join!

Locations in Milton and Lewisburg!



www.pinpointfcu.org
P: 570-742-3903

Business & Education

High school interns

LEWISBURG - According to the U.S. Department of Labor, employment in health-care occupations is projected to grow 15 percent from 2019 to 2029, much faster than the average for all occupations, adding about 2.4 million new jobs.

Healthcare occupations are projected to add more jobs than any of the other occupational groups. This projected growth is mainly due to an aging population, leading to greater demand for healthcare services.

Evangelical Community Hospital in Lewisburg is taking proactive steps to prepare students interested in health-care-related careers to meet the future demand through a unique program that allows them to experience many aspects of care.

This year's class included 12 individuals, made up of students having completed their junior or senior years at schools throughout the surrounding districts. The students must have a grade point average of 3.3 (88 percent) or better and the willingness to experience different areas of the healthcare environment.

The 72-hour internship program provides 24 hours in the classroom and 48 hours of one-on-one interaction with nurses and patients. Hospital educators teach the students a variety of skills including CPR certification, lifting and transfer techniques and personal care skills. The classroom training includes a fully recreated patient stay where students learn how to care for a patient from feeding, bathing, and oral hygiene, to making the bed and completing paperwork.

The high school students of this year's class come from five school districts including: Lewisburg, Line Mountain, Midd-West, Mifflinburg, and Selinsgrove.



Pictured are Evangelical Community Hospital's 2021 High School Summer Healthcare Careers Internship Students. In front, from left: Aleigha Heimbach, Selinsgrove; Rylynn Long, Mifflinburg; Emma Bobb, Midd-West; Ashley Snook, Midd-West; Abigail Times, Selinsgrove; and Kylie Figard, Line Mountain. Back: Sean Witmer, Mifflinburg; Sage Hoover, Line Mountain; Lydia Geipel, Selinsgrove; Trista Tehansky, Line Mountain; Grace Hilkert, Lewisburg; and Hailee Schlieff, Midd-West.

flinburg, and Selinsgrove.

The students began classroom training in late June and were placed in six-day rotations in varying departments including Obstetrics, Acute Care, Orthopaedics, Intermediate Care Unit, Imaging Services, Wound Clinic, Emergency, Intensive Care, and One-Day Surgery following their classroom instruction.

Students can use their summer experiences at the hospital to meet job shadowing requirements while experiencing first-hand a career path they might wish to pursue. For more information on the High School Summer Healthcare Careers Internship program, call 570-522-2727 or visit www.evanhospital.com.

CENTRAL PA BUSINESS & EDUCATION ASSOCIATION Seminar & Training Series

Creating Positive Workplace Cultures: Effective Employee Onboarding

10 a.m. to 12 p.m. Thursday, September 9
Central PA Chamber of Commerce or Online
Cost: **\$20 Member/ \$25 Non-Member**

Register: www.centralpachamber.com/events

Presented by: **Angela Hummel
Consulting**

CENTRAL PA BUSINESS & EDUCATION ASSOCIATION Seminar & Training Series

Current Technology Challenges Facing Small Business

9 to 11 a.m. Wednesday, September 15
Smith Room, Central PA Chamber of Commerce
Cost: **\$15 Member/ \$20 Non-Member**

Register: www.centralpachamber.com/events

Presented by:



Find the latest Seminar & Training class information @
www.centralpachamber.com/events

PPL supports 'B&E'

MILTON – The Central PA Business & Education Association is pleased to announce it has received a \$3,500 grant from the PPL Foundation.

These funds will support 'B&E' in its mission to provide career development opportunities for students. Putting students into experiences where they can meet and work with business professionals will increase their career interest and help better prepare them for the next stage of their lives. Opportunities include: Building Leaders for the Susquehanna Valley (BLSV), career fairs and hosting students at Legislative Events.

"We are so very thankful for the partnership with the PPL Foundation to help impact area students," said Michael Porter, Education Coordinator. "The funds from this grant will go a long way in helping develop the future leaders of the region."

The PPL Foundation awards annual grants through a competitive application and review process. Through strategic partnerships, it supports organizations working to create vibrant, sustainable communities, promote diversity, equity and inclusion, and empower each citizen to fulfill her or his potential.

The PPL Foundation contributes more than \$3 million annually to a wide variety of non-profit organizations. To learn more, visit: www.pplcares.com.

The Central PA Business & Education Association is the 501(c)(3) entity under the Central PA Chamber umbrella. There is a Business & Education Committee, and it takes numerous volunteers, the support of businesses/organizations and educational institutions to make B&E programs a reality.

The mission is to unite educational institutions and businesses to develop models that will empower students to lead the region in the future, all with the hope to attain B&E's vision of having "A Knowledge-ABLE Workforce".

Michael's Minutes

Hope and community



"Community is made up of hope dealers." – Liz Bohannon, Owner of Sseko Designs and a Leadercast 2021 Speaker.

Now more than ever, hope and community are the things we need in our lives. Hope in that we have a more successful tomorrow and community to help go through the bad and good things alike. That is why it is so gratifying to work for our members. The Central PA Chamber and it's Business & Education Association work to bring about hope to our members when they are in their lowest and also help them work together as a community whenever possible. Through our networking events and seminars, we help your business grow tremendously. These are opportunities for knowledge to be shared and connections to be made.

Another quote that has impacted me recently was given by Andy Stanley - "The next generational product almost never comes from the previous generation." As the Education Coordinator for the Central PA Chamber, I couldn't agree with this more. Each year, the students of our region are developing the next best thing and working to accomplish their goals for themselves that will ultimately impact our region in the future. Through Building Leaders for the Susquehanna Valley (BLSV), students develop their own business or "product" to see what they think would fit well in our local communities. Students take advantage of this opportunity to network and grow their relationships with many different community leaders as well while building these business plans.

Together, these quotes give the essence of what it means to work for the membership and region that we serve. Therefore, it is my hope to see many of my students truly learn the meaning of community as they work together on different projects with these community leaders. I also think there is a sense of hope in the youth themselves for our business leaders to learn from as they look for employees and strategies to help grow their businesses. The purpose of the Central PA Business & Education Association is to help connect our students with our community leaders, which is why we partner to connect on Career Fairs and job shadowing opportunities as well. Through all of these initiatives, I know that both our students and community leaders can learn from each other as they work to develop a better and brighter future for our region.

For more information on how to make these connections, or for more information about any of our programs, please, don't hesitate to contact me.

Michael

Michael Porter
Education Coordinator
mporter@centralpachamber.com

Central PA Career Fair

Wednesday, Nov. 3 @ Milton Area High School



Fun

Put your business/organization in front of more than 1,000 area students! Tell them about career/life prospects and how to prepare. Marketing opportunities, too!

Fashion

Work wear of all kinds will be modeled by students on the 28-foot catwalk! (Does your company have unique work attire we could feature?) The Fashion Show informs students and helps to eliminate gender barriers.



Free

Your participation costs nothing more than your time. Lunch is included, as well as tables and electricity (if requested). Attractive displays are encouraged - be creative!



Details and registration @ www.centralpachamber.com/events

Lunch Sponsors



The Daily Item
More for You!



La Primavera
Italiano Ristorante
& Pizzeria

Fine Italian Cuisine

Banquet Room Facilities
holds up to 160 people

Titolari: Vito & Salvatore Mazzamuto
Rt. 45 west Lewisburg, PA Telephone: (570) 523-1515



Jessica's Jottings

The kids are ready...are you?



Back-to-school season is here! For many of us, this means making sure our kids have the tools they need to be successful for another year, but do you have the necessary tools to be successful in your career? Not only is it important to make sure our next generation has the tools they need to be successful, it is also important we show them that we have the tools to be successful in our own jobs and personal lives. How does the Central PA Chamber of Commerce assist in this situation? Let me show you. Notebooks, pens, pencils, folders, etc. Whether you need these tools for a student or yourself, the Chamber knows right where to send you. Why not take a trip to A+ Office Supply or give the folks at 4 the Office a call? They can help you with the small essentials to the big items like office furniture. Whether it is a small order to fill for your home office, or a bulk order to supply your whole staff and building, these folks can accommodate any job!

Need a new wardrobe or just one new outfit? We have members to help you with that as well. Visit Jordanna Adams Clothing Boutique in Lewisburg or even the Tack Room in Vicksburg. These fine folks will make sure you find exactly what you need and help you look your best while conquering the world! If you have kids, trust me, they will love these places, too!

Learn, Learn, Learn! Just like we tell our kids to learn something every day, we should apply this to ourselves as well. Go to www.centralpachamber.com/events and sign up for a Seminar & Training Series class. We host and provide a variety of topics that will help you grow as a person and as a business! Multiple members help us deliver these trainings, from Angela Hummel Consulting to Susquehanna Computer Innovations. You only have something to gain by learning new skills. This is just a small jump start to prepare you for each and every day of your career. With our worlds constantly shifting right now, it is important to know where to get the tools to help you succeed. The Central PA Chamber of Commerce is here to remind you that we have the resources and will assist in any way we can to make sure you do! Be sure to check out our web site for links to fellow members' information, events to help you grow your mind and business, and many more tools that will help you accomplish your goals!

Jessica Williams
Finance & Membership Director
jwilliams@centralpachamber.com

Thank you!



Thanks to our friends at ClearView Asset Protection, we have a new vacuum to keep our offices and meeting rooms looking great! We were in need of an upgrade, so the surprise is really appreciated! Learn more about ClearView Asset Protection at www.clearviewassetprotection.com and find them on Facebook!

*Comprehensive
Crime Victim
Services Center*

transitions

SAFER FAMILIES. SAFER COMMUNITIES.

24-Hour Crisis Hotline
800-850-7948

Sales & Service

- Portable Fire Extinguishers
- Emergency Lighting
- Backflow Water Testing
- Automatic Fire Suppression Systems
- AED
- Fixed Gas Detection Systems
- Rescue Equipment
- Portable Gas Detection
- Fire Equipment
- Breathing Air Compressors
- SCBA
- Training Classes

**Susquehanna
Fire Equipment Co.**
www.susquehannafire.com

2122 Main Street
P O Box 209
Dewart, Pa 17730

54 Robinwood Ave
Lewistown, Pa 17044

800-822-2105

GSVUW announces Online Workforce Guide

SUNBURY – The Greater Susquehanna Valley United Way recently announced the launch of the Online Workforce Guide, which is an accessible, convenient resource for teens and young adults.

The page can be found at www.gsvuw.org/workforce-guide.

The comprehensive digital packet leads teens through a variety of options available in the region for early college programming, opportunities to earn credit toward college, and entry level workforce experience in specified fields. Options to explore include: technical schools, workforce preparatory programs, healthcare internships, access to PA CareerLink, and much more. The guide details program overviews, tuition costs, benefits of enrollment and contacts for more information. Most opportunities are located within Snyder, Union and Northumberland counties, targeting those 16-24 years of age. For those in need of professional clothing, the United Way is running the Career Closet that has men's and women's professional attire. From 10 a.m. to 1 p.m. on Mondays and Wednesdays, walk-ins are wel-

come to stop in and pick out clothing for interviews and employment opportunities. Appointments to visit Career Closet can be made by calling the United Way at 570-988-0993.

Programming for teens and young adults remains a high priority and area of impact for the United Way. The online guide bridges all sectors of the region: parents, students, local colleges, school districts, career centers and those looking to further their education. The guide seeks to equip young adults with the tools they need for success by providing them with the awareness and knowledge of continuing their education.

Vicky Kramer, a Career Counselor at YES to the Future, said "The Greater Susquehanna Valley United Way has captured the essence of a 'one stop shop' for youth interested in workforce development programs by compiling all local workforce resources in one location. The convenience and ease of accessibility cater to the youth population and fulfills their needs in just one click, providing more opportunities to capture and engage that population."



Pictured, from left: are Donna Socia, administrative assistant, and Katrina Mouery, co-executive director of the Sunbury YMCA, procuring a shipment of non-perishable, pantry staples to support community people in need. The Food Pantry will hold distributions twice a month at the Y. Anyone interested should call ahead to 570-286-5636.

YMCA sees community need

SUNBURY - The Sunbury YMCA, in conjunction with Geisinger, is now offering non-perishable food boxes twice a month at the Sunbury YMCA facility on 4th Street.

The Food Pantry distribution is held on the first and third Wednesday of each month from 4 to 6 p.m. at the Sunbury Y, located at 1150 N. 4th St. in the city. This is a drive-thru event, and anyone interested can proceed to the east side of the building and pick up a box at the Degenstein Youth Center entrance.

Pre-registration is required and can be done by calling the Sunbury Y at 570-286-5636. When picking up a box, community members need to present proof of residency either in the form of a valid driver's license or recent utility bill.

Co-Branch Director Katrina Mouery is thrilled to be able to offer this program.

"Our community has a significant amount of food insecurity, and the Y wants to help with this need," she said. "I know it's going to make a big difference for many families."

Mouery added the bi-weekly boxes are slightly different each time, but mostly consist of non-perishable, pantry staples such as cereal, pasta, juice, soup and other canned goods.

The YMCA is one of the nation's leading non-profits strengthening communities through youth development, healthy living and social responsibility. Across the U.S., 2,700 Ys engage 22 million men, women and children – regardless of age, income or background – to nurture the potential of children and teens, improve the nation's health and well-being, and provide opportunities to give back and support neighbors. Anchored in more than 10,000 communities, the Y has the long-standing relationships and physical presence not just to promise, but to deliver, lasting personal and social change.

BETTER TOGETHER



Plume
Whole-Home
Wi-Fi System



SERVICE ELECTRIC
CABLEVISION

secv.com/internet • 800.522.2389



To advertise in
It's Your Business,
call 570-742-7341
or e-mail

jshaffer@centralpachamber.com

BY THE NUMBERS...

*As of press time

Of survey cards received after Leadercast 2021, **94** percent would be interested in attending again.

The Smith and Ross rooms at the Chamber have been used by members **60** times so far this year.

The Chamber has conducted **17** ribbon cutting ceremonies through the first eight months of 2021.

Join us at these upcoming events!

BREAKFAST BRIEFING

7:30 to 9 a.m. Friday, Sept. 10 @
the Central PA Chamber of Commerce,
30 Lawton Lane, Milton.

Free to Attend - **Registration is Required**

Sponsored by:



PATCHMASTER™
THE DRYWALL REPAIR SPECIALISTS

CENTRAL PA
CHAMBER OF COMMERCE

welcomes

State Rep. Lynda Schlegel Culver



7:30 to 9 a.m. Friday, Sept. 17 @ Country Cupboard, Lewisburg

Admission: \$17

Register @ www.centralpachamber.com/events

Premier Sponsor:



TPS™
Thermal Product Solutions

CENTRAL PA CHAMBER OF COMMERCE **INSIDE JOBS**

11 a.m. to 1 p.m. Thursday, Sept. 23
@ Thermal Product Solutions (TPS)
2821 Old Route 15, New Columbia

Featuring:



- No open-toed shoes or high heels permitted
- Safety glasses required (provided or bring your own)
- Refreshments provided

Inside Jobs offers members a chance to tour facilities of fellow businesses/organizations.
Find tour details and register @ www.centralpachamber.com/events.

CENTRAL PA
CHAMBER OF COMMERCE

Save the Date!

Annual Meeting

11:30 a.m. to 1:30 p.m. Thursday, Sept. 30, 2021
@ The Silver Moon Banquet Hall, Lewisburg
(Feast of Flavor Catering!)

Registration required @
www.centralpachamber.com/events

Meal/Venue Sponsor: **service1st**
Friends you can bank on.

TRB
T-ROSS BROTHERS
CONSTRUCTION INC.

First Impressions matter. From the facade to the front door, reception area to the breakroom, your building should be a reflection of your business.
Considering a renovation or new space?
Our Design-Build team is ready to take on your next project.

**We don't just construct buildings.
WE BUILD BUSINESSES.**

Building for the Future

COMMERCIAL | INDUSTRIAL | DESIGN-BUILD |
CONSTRUCTION MANAGEMENT

www.trossbrothers.com | 570-524-6411



BEND-FAB
STANDING SEAM METAL ROOFING
A DIVISION OF T-ROSS BROTHERS CONSTRUCTION

Superior Quality. Unmatched Versatility. Rugged Durability.

www.bend-fab.com
570.522.0042