

Raised up, pg. 3

RAISING
the Board
Practice. Act. Apply. Connect.





Board of Directors

Eric McDowell - Chairman The Coup Agency	Ron Mackley - 1st Vice Chair iHeartMedia - Williamsport/Shamokin
Lennea Brown - 2nd Vice Chair RiverWoods Senior Living Community	Cheryl Rheppard - Treasurer USG
Philip Campbell Lackawanna College - Sunbury Center	Beth George Meadowbrook Christian School
Alison Hall The UPS Store	Joel Harris The Salvation Army - Milton
Andrew Hertzler XW Construction	Rob Jones Milton Public Library
Lauren McDonald The Wealth Factory	Chris Pinchak Heaven's Best Carpet Cleaning
Todd Ross T-Ross Brothers Construction	Ellen Ruby Lewisburg Downtown Partnership
Adam Wolfe Pivot Physical Therapy	E. Terry Baldwin - Solicitor Baldwin & Baldwin

Staff

Tea Jay Aikey - President & CEO tjaikey@centralpachamber.com
Jeff Shaffer - Communication Director jshaffer@centralpachamber.com
Michael Porter - Education Coordinator mporter@centralpachamber.com
Jessica Williams - Finance & Membership Director jwilliams@centralpachamber.com

The Inside Scoop

You don't know what you don't know. But, you can learn!

Our Raising the Board program recently graduated five individuals that will do a lot of good for their non-profit organizations of choice. I'm confident they all would have did well regardless, but we may have expedited the process. Non-profits need great board members now, so why wait? Read our cover story for more, and if you've been considering our "RtB" class, please, contact. Your favorite non-profit would be very grateful.

Well, it's time to refocus and reenergize for a new year. No, we're not staring off 2021 like we did 2020. There will be lasting changes. How have you adapted and overcome? If you're unsure, come listen to some local CEOs who know what it took to succeed this past year. On Dec. 9, we host the special Seminar & Training Series class "Strength to Persevere". Learn more about it on page 11.

It's been a trying year both personally and professionally for many, but what a joyous change of pace it was for the Central PA Chamber staff and a number of our members. We took part in a Drive-Thru Veterans Appreciation event organized by some of our elected officials, celebrating our brave servicemen and servicewomen. To see what was happening, turn to page 14.

Welcome, welcome, welcome! There are six new members to check out in this month's issue. Turn to page 4. And, in this month's Member Spotlight, on page 5, are Camp Mount Luther and VNA. Check out the virtual Central PA Career Fair that was held in early November on page 16, and see what's going on this holiday season starting on page 6.

Enjoy the issue!



Jeff Shaffer, Editor
Communication Director
jshaffer@centralpachamber.com

It's Your Business Deadlines

January Issue

News/Ads Dec. 11 -- Flyer Inserts Dec. 14

Interested in advertising in this publication?
Contact Jeff at jshaffer@centralpachamber.com or
call 570-742-7341

Find FREE copies of *It's Your Business* at these
Chamber member locations (availability may vary):

Lewisburg

Country Cupboard ■ Lewisburg Borough ■ Lewisburg Hotel
Lewisburg Pharmacy ■ McCann School of Business & Technology

Mifflinburg

A+ Office Outlet ■ Forest House Hotel

Milton

Baldwin & Baldwin ■ Central Vision Eyecare
Milton Public Library ■ Pinpoint Federal Credit Union

Northumberland

RE/MAX River Valley Realty ■ W and S Distributors

Sunbury

City of Sunbury Office ■ Eclipse Craft Brewing

Watson town

Watson Inn



Ann Hilliard - RE/MAX Bridges

Coldwell Banker Penn One Real Estate ■ Davis, Davis & Kaar

Decal Dynasty ■ Evangelical Community Hospital

Green Ridge Graphics ■ Heritage Springs Memory Care

Hosterman Photography & Design ■ iHeartMedia

Interaction Dynamics Group ■ Jersey Shore State Bank

La Primavera Italiano Ristorante & Pizzeria ■ Lawton Insurance Agency

Lewisburg Pharmacy ■ LIVIC Civil ■ Mifflinburg Bank & Trust

Milton Savings Bank ■ North Central Sight Services

North Shore Railroad ■ On Fire Promotions

PenTeleData ■ PPL Electric Utilities

Practical Business Solutions ■ Riverwoods Senior Living Community

Safeguard Business Systems ■ Service 1st Federal Credit Union

Service Electric Cablevision/SECV8 ■ Seven Mountains Media

Stahl Sheaffer Engineering ■ Susquehanna Fire Equipment Company

Susquehanna Valley Limousine ■ T-Ross Brothers Construction

The Daily Item ■ The Standard-Journal ■ The Wealth Factory

Unique Inspirations Limited ■ Watson town Dental ■ XW Construction

The President's Club is an exclusive sponsorship program created to prominently recognize companies that contribute to the Central PA Chamber over and above their annual membership investment. For more information, call 570-742-7341.



Above, Raising the Board Mentor Tina Nail, of Nailed It Business Services, conducts an exercise with the class during the 'Meeting Protocols' topic. On the cover: In front is: Wendy Weaver of Weaver Wireless Consultants; Second row, from left: Shirley Brough of Buffalo Valley Recreation Authority and Airneezee Page of Community Connection Williamsport; Back: Lenaire Ahlum of Susquehanna Valley Community Education Project and Skyler Herb of Bear Rental. Together, they completed the four-week course, making them more confident and skilled non-profit board members. (Thank you to Wendy Weaver for the great 'social distancing' picture idea!)

'RtB' graduates five

MILTON - An additional half dozen or more non-profit organizations will be better served, following the most recent Raising the Board (RtB) graduation.

RtB, a program of the Central PA Chamber of Commerce, concluded its fall session on Nov. 11, graduating five current or future non-profit board members. Over the course of four weeks, they learned about the topics most important to succeeding in their roles, which not only benefits them but the organizations they care so much about.

Since the beginning of 2019, RtB has graduated 34 individuals, both Central PA Chamber members and non-members alike. This program is open to the general public.

RtB was completely developed in-house by both staff and Chamber members, focusing on the key topics important to non-profit leaders. The topics are broken down into subject areas, which is called the "PAAC" Model - Practice, Act, Apply and Connect.

RAISING
the Board
Practice.Act.Apply.Connect.

Topics range from strategic planning and culture to financial essentials and social media use. The course content was written by Subject Matter Experts (SMEs), and it's presented by "mentors" with additional support from panelists.

Thank you to our class mentors and/or panelists! They are: Lauren McDonald, The Wealth Factory; Rob Jones, The Milton Public Library; Tina Nail, Nailed It Business Services; and Loni Briner, North Shore Railroad.

This round of RtB was held in the evening. The next set of classes is slated for the daytime in the spring.

In addition, RtB plans to make another exciting announcement in early 2021 - stay tuned!

Learn more about Raising the Board now by visiting www.centralpachamber.com/rtb. Want to be the first to know the next class dates? E-mail Program Director Jeff Shaffer at jshaffer@centralpachamber.com.



Quality Collision Repairs on
All Domestic & Foreign Cars & Trucks
Alignment Specialists • State Inspection
Towing & Rollback Service

47 Apple Street • Milton, PA 17847
Phone: (570) 742-9627

Davis, Davis & Kaar

Attorneys at Law

*Wills & Estate Planning * Real Estate*
*Family Law * Business Law * Personal Injuries *

37 N. Arch Street, Milton, PA
P.O. Box 319

Phone: 570-742-8777 Fax: 570-742-6155

New Members

Fowler Diesel Service LLC
758 Longacre Road
Mount Pleasant Mills, PA 17853
717-481-3355

8001diesel@gmail.com
Robert Fowler - Owner
<https://www.facebook.com/Fowler-Diesel-Service-108096337639743/>

Commercial truck and trailer, coach and bus maintenance, repair, parts, towing, sales.

The Sholley Insurance Agency Inc. - Selinsgrove
108 N. Market St.
Selinsgrove, PA 17870
570-523-3251

mtroup@sholleyagency.com
Meaghan Troup - Marketing Director
<https://sholleyagency.com>

The Sholley Agency is a family-owned, independent insurance agency serving the Central Susquehanna Valley since 1985. We specialize in all lines of coverage, including: commercial insurance, group health insurance, personal insurance, life insurance and much more. We strive to provide personalized service, customized coverage and competitive prices to our valued clients.

Muncy Bank & Trust Company - Montgomery
2190 State Route 54
Montgomery, PA 17752
570-547-0123

nikki.stepp@muncybank.com
Nikki Stepp - Office Manager
<https://www.muncybank.com>

The Muncy Bank & Trust Company was established in 1893 and serves customers through their retail banking, commercial banking, trust and investments services divisions. Muncy Bank Community offices are located in: Muncy, Hughesville, Clarkstown, Montoursville, Dewart, Avis, Linden, and Montgomery.

S.U.N. Virtual Mall
418 Hazel St.
New Berlin, PA 17855
877-858-9010
anewyorkguy@yahoo.com
Art Lieberman - President

web site coming soon!

S.U.N. Mall is a virtual shopping center run with e-Commerce software. It will rent to people in the Snyder, Union and Northumberland counties and, eventually to Lycoming County also. Since it will be on the Internet, it will be available as a shopping center to anyone online. The stores will have "regular hours" that they are open, but shoppers can access the stores 24/7/365. The business is slated to open April 2021.

Caring Communities for AIDS - Bloomsburg
2201 Fifth Street Hollow Road 1
Bloomsburg, PA 17815
570-899-1298

ckupchik@caringcommunitiespa.org
Christopher Kupchik - CEO
<http://caringcommunitiespa.org>

We provide HIV testing and support services as well as regular HIV treatment. Further, we offer STD/STI screenings and treatment at our Bloomsburg location. Telehealth appointments also available via this office.

KVS Trade Gateway, LLC
71 W. Water St.
Hughesville, PA 17737
570-312-0479

imports@kvstradegateway.com
Nicole Wettlaufer - President
<https://kvstradegateway.com>

KVS Trade Gateway is an importing business located in Hughesville, dedicated to enhancing trade performance between the U.S. and North African markets by importing Mediterranean goods to the United States. KVS Trade Gateway was created to share the culture and love of owner Cherif Ammar-Khodja's native region, with not only his friends and family in the States but the entire U.S. market. The Mediterranean and the nearby mountainous regions of North Africa boast flavorful, natural, simple foods that are traditional to their history. From traditional Berber fare of couscous and flat bread, to Tunisian olive oil and harissa, the cuisine of North Africa is packed full of spice and flavor.

Find the latest member news on our Facebook page and at www.centralpachamber.com.

SOLD

Don't worry we've done this a million times

RE/MAX
BRIDGES

633 N. Derr Dr.
Lewisburg, PA 17837
570-768-4792

RE/MAX
RIVER VALLEY REALTY

166 Eighth St.
Northumberland, PA 17857
570-473-8888

RE/MAX
BRIDGES

210 Main St.
Watson, PA 17777
570-538-2582

Membership Renewals

(As of Nov. 16, 2020)

American Drug and Alcohol
Diagnostics LLC
Beiters Inc
Brookpark Pet Supply
Contrast Communications
Country Cupboard
Cricket Wireless at One-Stop
Communications
Diane Weller Coaching
DogWatch of East
Central PA, LLC
First Commonwealth Bank
- Downtown Lewisburg
First Commonwealth Bank
- Lewisburg Weis
First Commonwealth Bank
- Milton
GAF Roofing

K. Barton Reichard, Jr.
Lavonne C Poteet
Lewisburg Pharmacy
Lon's Auto Body Inc.
- Mifflinburg
Lon's Auto Body Inc.
- Vicksburg
McNerney, Page,
Vanderlin & Hall
Padgett Business Services
Travel Leaders - Lewisburg
Verizon Wireless - Russell
Cellular - Danville
Verizon Wireless - Russell
Cellular - Mifflinburg
Weaver's Tire Service, Inc.
Workforce Development at
Pennsylvania College of
Technology



Chad Hershberger, Executive Director

chad@campmountluther.org

(570) 922-1587

355 Mt. Luther Lane, Mifflinburg

What makes your organization unique?

We create memories that last! Through our summer program, events, and our location, we allow participants to connect with others, nature and God.

How do you market your business?

Through local churches, newspaper, radio, and social media. Our best marketing is word of mouth!

What is your Mission Statement?

A year-round ministry providing resources and experiences in faith formation, worship, recreation, and intentional Christian community for all ages.

How many people do you employ?

About 25

Advice to those who own a business?

Don't forget to think about ways you might be able to partner with non-profits.

Finish this sentence – "On a day off I..."

Like to spend time with family, read and be outside.

Words to live by?

Be on the lookout for the beauty in each moment.

What are the top 3 company priorities you focus on?

- Engaging children, youth, adults and fam-

ilies in faith formation.

- Providing a quality site for outdoor education.

- Being a resource for the community.

What are the characteristics you look for in employees?

Dedication to our mission, putting others above themselves, sense of humor.

What philanthropic causes does your organization support?

We have done fundraisers with our campers for world hunger.

James White, LPN Community Liaison

jwhite@vnahs.com

(570) 875-7486

www.vnahs.com



What makes your business unique?

VNA Health System is the oldest Home Health Agency in Central PA. We started in 1913 in Shamokin. We are also one of the last remaining home health agencies that is non-profit. The Lewisburg Home Health office has been part of VNA Health System since 2010.

How do you market your business?

Our marketing is done through our Community Liaisons who promote the business through face-to-face marketing to physician offices, nursing homes, personal care homes, senior high rises, e-mails, health fairs and our community services, which include blood pressure screenings, community health se-

ries and flu clinics.

What is your Mission Statement?

To provide quality, cost-effective home health and related services in our service territory, to all persons or families, regardless of their ability to pay.

How many does your business employ?

Lewisburg Home Health employees 20-25 people.

Advice to those who own a business?

Always display courtesy, integrity, honesty, and respect.

What are the top 3 company priorities you focus on?

- Superb patient care – always a step above

- Community services – health and wellness

- Customer satisfaction – going the extra mile

What are the characteristics you look for in employees?

Caring, supportive, honest, loving and dependable.

**Want to appear in the
Member Spotlight?**

**E-mail Jessica Williams at
jwilliams@centralpachamber.com
for details!**



DECAL APPLICATION & REMOVAL

Fleet & Truck Markings,
Custom Striping, Labels, Magnetic Signs,
Contractor Job Site Signs, Posters,
Window & Wall Graphics, Building Letters

A Quality Service

decaldynasty.net • 17355 Old Turnpike Road (Rt 45), Millmont, PA 17845



www.BHSHodrickRealty.com

BERKSHIRE HATHAWAY | Hodrick Realty
HomeServices

1100 West Market Street
Lewisburg, PA 17837
570-523-1000

1070 Bloom Road
Danville, PA 17821
570-275-7696

What's Happening

Sleigh Dash for Heroes

Virtual 5K- \$25

December 4th noon until December 7th noon

All kids need heroes. Abused kids need superheroes. Be a hero, register now at

www.susquehannavalleycasa.com

If you have any questions, please email SuperHero5k@susquehannavalleycasa.com



www.susquehannavalleycasa.com



A special thank you to our main event sponsor, Miele Manufacturing- Pennsylvania Skill.



COME JOIN US AT THE FOLLOWING EVENTS

Every Day – We have a clothing and shoes ONLY bin at the puppet home as a fundraiser. It is a HandUp Foundation bin. It is located behind the puppet home in the back alley.

Miss Curly's Right Hand Club – Fundraiser for a monthly subscription of \$15 or more to help pay for our monthly utilities and insurances. Go to: hiskingdomkidz.com.networkforgood/projects/95011-2020-giving

Virtual Programming – Kingdom Kidz is currently doing all programs virtually on Facebook each night at 7 p.m. Join in and see what new adventures God is sending us on.

Matching Fund Campaign – Kingdom Kidz is looking to match funds recently received to help recoup losses due to the shut down of programs due to COVID-19. We would like to thank the community for your grace and generosity during these difficult times. May God richly bless you for blessing Kingdom Kidz.

Amazon Smile - You can help us while shopping! Go to [Smile.Amazon.com](https://www.amazon.com), click on Kingdom Kidz, and we will receive a donation from Amazon Smile. No extra monies taken from you.

Kingdom Kidz is looking for volunteers who are willing to assist with the sound, lighting and media aspects of our programs. We will train. Clearances are a requirement. MUST HAVE A HEART TO SERVE AND MINISTER TO OTHERS.

Quality Family Programming

www.hiskingdomkidz.org e-mail: puppets@hiskingdomkidz.org

Follow us on Facebook 570-838-3133



American Red Cross

The need is constant.
The gratification is instant.
Give blood.™

redcrossblood.org | 1-800-RED CROSS

Blood Drive

Central PA Chamber of Commerce

Smith Room – 30 Lawton Lane - Milton

December 17th, 2020

10:00 AM – 3:00 PM

Call 1-800-Red Cross (1-800-733-2767) or visit redcrossblood.org and enter: PAChamber to schedule an appointment

A BVRA HOLIDAY EVENT

HOLIDAY PET PAWRADE + FIRESIDE WITH SANTA

Festively dress your pet for a parade around the Warming House then join us by the fire for crafts, music, hot cocoa and visits with Santa!

\$10 per family

DEC. 12 • 1PM
WARMING HOUSE • 205 ST. LAWRENCE ST.

TICKETS AT BVREC.ORG OR CALL 570-524-4774



Seminar & Training Series

Strength to Persevere Leadership Symposium

9:00 a.m. to 12:30 p.m. Wednesday, Dec. 9

Central PA Chamber of Commerce or

Online via GoToWebinar

Cost: \$40 In-person (includes lunch) or
\$50 Online

Register: www.centralpachamber.com/events

2020 has certainly proven to be a weird time both personally and professionally. While many are adapting to the current environment it certainly has put a strain on leaders, teams and organizations in unexpected ways. Some businesses are surviving well while others are struggling. Regardless of which situation you find in your business, we appreciate that you are being stretched, challenged and impacted.

Now is the time to look forward!! In this half-day leadership symposium, you will explore ideas for thriving in uncertainty, hear from your peers about how they are navigating this time and prepare to emerge stronger in 2021.

Join our outstanding session team for a time of reflection, renewal and re-energizing.



Presented by:
Kevin Sensenig, Ph.D., RODP
Interaction Dynamics Group

CEO PANELISTS



Tea Jay Aikey
Central PA Chamber
of Commerce



Colleen Fritz
Heritage Springs
Memory Care



Samuel Haulman
Service Electric
Cablevision



Lauren McDonald
The Wealth Factory



Todd Ross
T-Ross Brothers
Construction, LLC

Service 1st continues support for 'Going Gold'

DANVILLE - During September, a number of local businesses, organizations and communities joined together to "Go Gold," raising awareness about pediatric cancer and \$6,500 to support the ThinkBIG Pediatric Cancer Fund (ThinkBIG). Due to the COVID-19 pandemic, the Going Gold 2020 kick-off event and fundraisers were held virtually this year.

Nearly 15,500 children in the U.S. are diagnosed with cancer every year. ThinkBIG is dedicated to minimizing the stress families battling pediatric cancer experience, by providing financial support for everyday cost of living expenses and unpaid medical bills. Since 2014, this organization has allocated over \$715,000 to help local families; over \$190,000 in 2019 alone.

"While we look forward to the day when we can come together again in-person to help raise awareness, the support the Going Gold virtual events received was overwhelming," said Bill Lavage, President/CEO, Service 1st Federal Credit Union. "Thank you for joining us and supporting this year's fundraisers."

In addition to an online T-shirt sale and raffle, Marley's Brewery & Grille, Bloomsburg, and Old Forge Brewing Company, Danville, collaborated on this year's Gold Dust Pale Ale, donating \$1 per pint sold throughout September. Jackass Brewing Company in Lewisburg donated \$1 per 16 oz. of "Isn't that Peachy" Peach & Ginger Sour to benefit ThinkBIG as well.

To date, "Going Gold" has raised over \$66,500. For more information, call Service 1st FCU at 800.562.6049.

Date	Event	Location	Time	Cost
12/3/20	Identifying Cobot Applications	Webinar	12 to 1 p.m.	Free
12/8/20	Improving Food & Beverage Inspection with Automated Machine Vision	Webinar	1:30 to 2:30 p.m.	Free
12/9/20	USMCA - What Has Changed & What Do I Need To Do To Comply	Webinar	9 to 10:30 a.m.	Free

Lauri Moon
Manager, Training & Outreach
570-329-3200 ext 8085
www.imcpa.com/events

S B D C
PENNSYLVANIA

Small Business Development Center
Bucknell University

570-577-1249
www.bucknell.edu/sbdc

Date	Event	Location	Time	Cost
12/9/20	1 Million Cups Susquehanna Valley Entrepreneurship Event	Online	9 a.m. to 10 a.m.	Free

Have you dreamed of being your own boss for many years but don't know where to start? Do you ask questions like:
*"How do I turn my good idea into a successful business?"... "What kind of forms and licenses do I need?"...
 "Where can I find financing?"... "Where is the best place to open my business?"...
 "What is a business plan and how do I prepare one?"... Start with the Bucknell SBDC!*

Virtual performance of 'A Christmas Carol'

LEWISBURG - The Weis Center for the Performing Arts at Bucknell University will host a virtual holiday performance of Manual Cinema's "A Christmas Carol" at 8 p.m. Saturday, Dec. 5, at 4 p.m. Sunday, Dec. 13, and again at 8 p.m. on Thursday, Dec. 17.

The runtime for the performance is one hour and is suggested for ages 5 and older.

The performance is sponsored, in part, by Martha and Alan Barrick and Coldwell Banker Penn One Real Estate.

In this world premiere online event created for audiences of all ages, interdisciplinary performance collective Manual Cinema takes on Charles Dickens' holiday classic with a visually inventive adaptation made to broadcast directly to your home.

Performed live in Chicago and presented by a live stream, Manual Cinema's "A Christmas Carol" will be told with hundreds of paper puppets, miniatures, silhouettes, and a live original score in an imaginative re-invention of a cherished holiday tradition.

An avowed holiday skeptic, Aunt Trudy has been recruited to channel her late husband Joe's famous Christmas cheer. From the isolation of her studio apartment, she reconstructs his annual Christmas Carol puppet show – over a Zoom call while the family celebrates Christmas Eve under lockdown. But as Trudy becomes more absorbed in her own version of the story, the puppets take on a life of their own, and the family's call transforms into a stunning cinematic adaptation of Dickens' classic ghost story.

Kathryn Maguet, Executive Director of the Weis Center, said "The Weis Center is excited to share a new and entirely virtual performance by the brilliant and innovative Chicago theater company, Manual Cinema. Central PA audiences may remember last year's stunning Frankenstein which was presented last fall at the Weis Center. A Christmas Carol promises to delight and awe!"

Tickets are \$20 per household and can be purchased at www.Bucknell.edu/BoxOffice or by calling 570-570-1000.

Ticket purchasers will receive a livestream link 24 hours prior to the performance. Please, consider testing the link prior to showtime.

Purchase tickets early as ticket sales will conclude 30 minutes prior to each performance's show time.

While online and phone call orders are preferred, tickets are also available in person at the Weis Center vestibule weekdays 10 a.m. to 4 p.m. Facial coverings are required and only one party at a time is allowed in the vestibule.



Manuel Cinema's 'A Christmas Carol' will feature hundreds of paper puppets, miniatures, silhouettes and a live, original score.

For more information about this performance, visit <http://go.bucknell.edu/WeisCenterHoliday>.

In the coming weeks, the Weis Center will announce details about a virtual spring 2021 season that will include half a dozen livestreamed performances including classical, modern dance, world dance and music and a family-friendly performance.

"The pandemic has created unique challenges for the performing arts field and has forced cancellations across the country," Maguet said. "However, we remain dedicated to bringing thoughtful, timely and relevant work to our community in accessible ways that inspire us all to keep creating."

"While we miss engaging with you in person, we continue to feel energized through sharing the work of extraordinary and exceptional performing artists. We look forward to gathering again when it is safe and thank you for your ongoing support."

For more information, visit www.Bucknell.edu/WeisCenter and find the Weis Center on Instagram, Facebook, Twitter or YouTube.

CONNECT WITH US!



Internet • TV • Home Phone
HDTV • DVR • On Demand • TV Everywhere

SERVICE ELECTRIC
CABLEVISION

secv.com • 800.522.2389



**NORTH CENTRAL
SIGHT SERVICES
INC.**

**NEW COSTARS MEMBER
NUMBER- 351544**

★★★ AVAILABLE PRODUCTS ★★★

Liquid Hand Sanitizer	1-5 cases	6-15 cases	16+ cases
16.9 Spray (8/case)	\$58.32	\$55.92	\$53.92
32 oz Pump (12/case)	\$130.68	\$125.88	\$119.88
1 Gallon w/ Cap(2/case)	\$67.18	\$63.98	\$59.98
55 Gallon Drum w/ Pump (1)	\$1413	(2-4) \$1359	(5+) 1299

**CALL US NOW! (570-323-9401 Ext. 155 or 129
or email sales@ncsight.org**

Proceeds provide programs, services, and employment that help people who are blind or visually impaired live independently and for the prevention of blindness.

Help US Help YOU Battle COVID-19

COSTARS ★★★★★
Pennsylvania Department of General Services



From left: Chris Peifer of Susquehanna Valley Limousine and Micah Miner of National Beef received the 'Pink Whisk' award for raising the most dollars at the Virtual Cookin' Men event in October. The funds raised from the event support Evangelical Community Hospital's Center for Breast Health. Despite restrictions and limitations related to COVID-19, the event in its 10th year still managed to raise more than \$38,000, helping those underinsured and uninsured.

Cookin' up funds

LEWISBURG - Evangelical Community Hospital's annual Cookin' Men event, centered around food and gathering, was impacted by the COVID-19 pandemic this October. The event, in its 10th year, raises vital funds for patients of the region who because of being underinsured or uninsured struggle to pay for much needed annual breast cancer screenings at the Thyra M. Humphreys Center for Breast Health.

"We knew out of an abundance of caution with relation to the pandemic we could not hold the event the same as we had always done," said Donna Schuck, Associate Vice President/Chief Development Officer at Evangelical. "But we also knew these funds serve as a vital resource for our patients so we tasked ourselves with rethinking the way it could happen. Thanks to the continued support of so many businesses and individuals, the new format raised over \$38,000 for the Center." From Oct. 19 through Oct. 30, participants were invited to visit the Cookin' Men web site and vote for their favorite chef with their donations. The chef with the highest amount of dollars raised was deemed "Top Chef". The winner, with \$6,725 as their final tally, was Chris Peifer of Susquehanna Valley Limousine and Micah Miner of National Beef. They were presented with the coveted "Pink Whisk" award for their efforts, maintaining the title two years in a row. In second and third place, respectively, were Timm Moyer and Ric Jones - MoJo Active, Inc. (\$3,105) and Dale Moyer - Evangelical Community Hospital (\$1,835). In total, the chefs raised \$18,701.

In addition, to capture the excitement surrounding the enjoyment of delicious dishes, the highest donor for each chef won that chef's dish, which will be delivered to the winner's home at a mutually agreed upon day and time.

"We are so grateful that we could have a successful event and overcome the challenges of the pandemic," said Schuck. "From our generous business sponsors, to the creativity of the chefs in creating their dish and inviting friends and supporters to vote for them, the community rallied for the Center for Breast Health."

For more information about the Center for Breast Health and ways to support a variety of Evangelical's programs and services, visit www.EvanHospital.com.

Pictures with Santa



Stop by Brookpark Pet Supply, 400 Farley Circle, Lewisburg between 12 and 4 p.m. Saturday, Dec. 12 and have your pet's picture taken with Santa Claus! Call 570-412-1500 or e-mail arthurspetpantry@gmail.com to schedule your time. The cost is \$5, and you receive the picture before you leave. All proceeds support Arthur's Pet Pantry so they can continue to help feed pets in times of need. Learn more at <https://arthurspetpantry.wixsite.com/arthurspetpantry>.

Smart & Creative for over 35 years!

The professional team at AdOne Advertising & Design has been providing our customers with creative solutions and award-winning designs for over 35 years. Let us help you find the perfect way to promote your company with competitive pricing and fast turn times.

AdOne
advertising & design



570-286-1111
mypromotionalneeds.com



Time with Tea Jay

Before checking out...

The end of 2020 is quickly approaching, and I believe many of you will agree when I say that most folks checked out of this year at least a month ago already.

We've been feverishly preparing for 2021, and we still have some great things scheduled to occur before rounding out the arduous year.

But, looking ahead, membership continues to be on the rise and retention is strong, too. And, I see a new membership record in the first quarter of the new year!

Our annual Board of Directors election has concluded and those elected will be ratified at this month's board meeting.

It's always exciting to see who our new directors will be!

The 2021 Directory is slated to feature members who not only survived 2020 but even found a way to thrive during the ongoing pandemic. Do you have a story to share? Let us know.

Speaking of surviving and thriving - Have you yet registered for the "Strength to Persevere Leadership Symposium" scheduled on Dec. 9 at the Central PA Chamber? (See the next page for details.) Seating is limited, so we are also offering a webinar option. This is a half-day leadership symposium where you will explore ideas for thriving in uncertainty. You will also hear from some of your peers about how they are navigating and preparing to emerge stronger in 2021. There will be four highly respected and successful CEOs, and myself, on a panel that will be led to discuss a time of reflection, renewal and re-energizing.

Our 2021 Men & Women of Business Calendar will be available this month, too. There are many newly featured members in this record-breaking profit project! Be sure to stop by and pick up your copy when you see the announcement that they are available.

Have you submitted a Why Us yet? Don't know what I am referring to? Call me now!

Need last minute ideas for holiday employee and/or customer gifts? Click "Membership Directory" under the Membership tab on our web site, www.centralpachamber.com, for great ideas. There are so many outstanding member vendors to choose from.

Looking for a place to eat or order your holiday meal from? Again, visit our web site.

We still have a few more Breakfast Briefings scheduled for 2020. Registration is required at www.centralpachamber.com/events.

We also have ready 2021 sponsorship opportunities, and the intent form can be found on the homepage of our web site.

Many of these opportunities are limited and will be spoken for before you know it - Act fast!

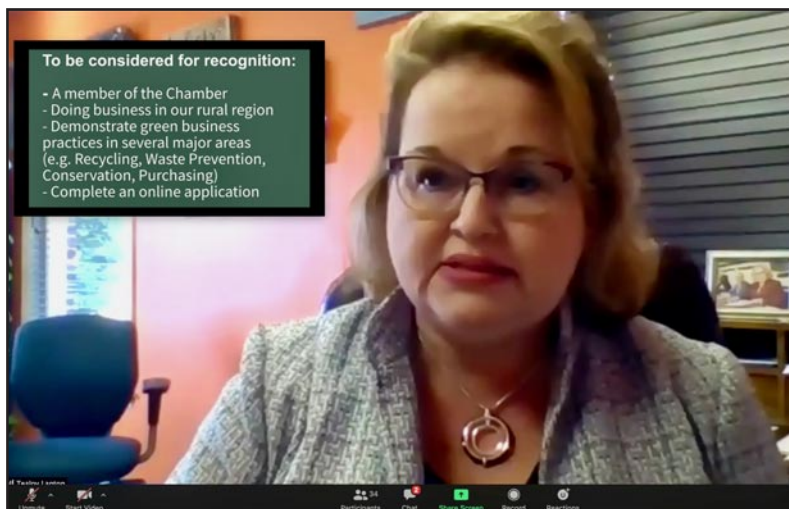
The President's Club in 2021 is still open enrollment through the end of January. If you need details, please, contact me. Know that the team and I are looking forward to serving and promoting you our Members in 2021 and beyond! We are here to offer business solutions and take great pride in doing so.

Our Business is Your Business!



Tea Jay Aikey
President & CEO

tjaikey@centralpachamber.com



Central PA Chamber of Commerce President & CEO Tea Jay Aikey spoke to an international audience in October about the chamber's Green Business Recognition Program. She and other leaders from across the globe presented their sustainably programs that have benefited their chambers and members during the U.S. Green Chamber of Commerce's 'Chambers for Sustainability Webinar' on Zoom. It was open to chambers, their members as well as the public. The Central PA Chamber's Green Business Recognition Program has been recognizing members that put forth 'green' efforts since 2013. It was created to showcase the environmental efforts of the region, with the goal of encouraging green business practices on a broader scale. Central PA Chamber members can apply for the Green Business Recognition designation at any time by clicking 'Green Business Recognition' under the Membership tab at www.centralpachamber.com.

WELCOME TO YOUR LOCAL SOURCE FOR BANKING

We know local markets, we make local decisions,
and we'll find an account that works for you.

milton
SAVINGS BANK

Member FDIC



CHECKING, SAVINGS & LENDING SOLUTIONS

CALL 570-742-8541 OR VISIT US TO GET STARTED

80 BROADWAY STREET | MILTON, PA 17847 | WWW.MILTONSAVINGSBANK.COM

'Strength to Perservere'

MILTON - Do you have the right mindset heading into 2021?

For many business/organization leaders, this year has caused a greater strain than any other year in recent memory.

Do you know what it takes to continue through the hard times? It's the "Strength to Perservere".

"The stress and strain of 2020 is reducing the resilience of many leaders," said Dr. Kevin Sensenig of Interaction Dynamics Group, which regularly works with leaders on assessments, coaching, facilitation and workshops. "Many tell me they are feeling alone and believing that nothing will change, or at least not change fast enough.

"We have learned that people will endure significant struggles, if they believe the struggle is helping them develop into the person/leader they want to be." Sensenig, and a team of CEO panelists, will be at the Central PA Chamber from 9 to 12:30 p.m. Wednesday, Dec. 9 to reinforce the resilience of area leaders and provide tools for being a leader who helps keep the aspirational goals alive in others.

"It can connect the dots to how this particular 2020 struggle can lead to positive developments for your team, your customers and your organization"

This Seminar & Training Series half-day leadership symposium will feature five notable CEOs from the region. They include: Colleen Fritz of Heritage Springs Memory Care, Samuel Haulman of Service Electric Cablevision, Lauren McDonald of The Wealth Factory, Todd Ross of T-Ross Brothers Construcion, and the Central PA Chamber's



Dr. Kevin Sensenig Tea Jay Aikey



Colleen Fritz Samuel Haulman



Lauren McDonald Todd Ross

CENTRAL PA BUSINESS & EDUCATION ASSOCIATION Seminar & Training Series

"Strength to Perservere Leadership Symposium"

9 a.m. to 12:30 p.m.

Wednesday, Dec. 9

@ the Central PA Chamber,
30 Lawton Lane, Milton

Register @

www.centralpachamber.com/events

own Tea Jay Aikey.

"As a CEO with just two and a half years of experience in a leadership role, I have learned a lot about myself and my abilities to tackle challenges head on," Aikey said. "I want to expand on that ability by joining some outstanding CEOs in the region to learn what they can offer as well as sharing what I have done.

"We have a choice to either sit idle and fail or move forward regardless of how hard the challenges may be."

To register for the "Strength to Persevere Leadership Symposium", visit www.centralpachamber.com/events.

The cost is \$40 to attend in-person, which includes lunch, or \$50 to attend online. Instructions will be given on how to take part via the online service GoToWebinar.

WHY US?

What our members are saying...

"...YOU GET TO BUILD
RELATIONSHIPS AND
BUILD BONDS..."

- Philip Campbell, Lackawanna College Sunbury Center

CENTRAL PA
CHAMBER OF COMMERCE

LIVE

HIGH SCHOOL SPORTS
AND MORE

High School Sports and More Exclusively on
Service Electric Cablevision Channel 508 HD or 8 SD.

SECV8

Check secv8.com for a complete schedule!

Members Recognized

Innovative Manufacturers' Center (IMC)

WILLIAMSPORT - On Nov. 2, IMC's Lauri Moon, Manager of Training and Outreach, celebrated her 30th anniversary with the non-profit headquartered in Williamsport.

During these 30 years, Lauri has enjoyed many successes working in and partnering with the economic development and manufacturing communities of Central PA. As Manager, Training & Outreach for IMC, Lauri oversees client trainings, from two-hour informational briefings to multi-day certification programs. She oversees center marketing and other outreach activities that support IMC's mission of promoting growth and innovation in Central PA manufacturing.

Lauri is often project manager on many of IMC's special initiatives, serves as coordinator for the Williamsport/Lycoming Keystone Innovation Zone (WLKIZ) and is co-manager of the Central Susquehanna "What's So Cool About Manufacturing?" program.

Lauri is a member of the Greater Lycoming Habitat for Humanity Board of Directors and ReStore Committee, a member of the Williamsport/Lycoming Chamber of Commerce's Leadership Lycoming Curriculum Committee and is active in several other local organizations.



Lauri Moon

Angela Hummel Consulting

NORTHUMBERLAND - Wendy Johnson, World-wide Association of Business Coaches (WABC) Founder and President/CEO, announced that Angela Hummel of Angela Hummel Consulting LLC has earned the designation Certified Business Coach (CBC).

The CBC designation, and the training leading to it, are built around a coaching-specific curriculum that is current, rigorous and based on thoroughly researched business coaching competencies.

CBC signifies Hummel has gone beyond general coach training to build the specialized competencies and skills of a practitioner business coach. Hummel first earned her Registered Corporate Coach designation through the same organization in 2018 and added this new, advanced level designation to better serve her coaching and consulting clients.

WABC is the first global professional association representing the business coaching industry. Since its inception in 1997, WABC has dedicated itself to raising the profile of business coaching.

Angela Hummel is the President/Owner of Angela Hummel Consulting LLC, which has a primary focus on organization and leadership development, training and organizational coaching. Hummel has also met the rigorous testing and certification standards for two senior-level Human Resources credentials: Society for Human Resource Management-Senior Certified Professional and the HR Credentialing Institute's Senior Professional in Human Resources. She also earned her Certified Professional in Talent Development and is certified to administer and interpret both DiSC and Hogan assessments for her clients.

Founded in 2019, Angela Hummel Consulting LLC is a leadership consultancy firm based in Central Pennsylvania. The company offers a wide range of training, organizational and leadership development and organizational coaching services. For more information or to explore services, visit www.angelahummel.com.



Angela Hummel

Central PA Chamber of Commerce

MILTON - Tea Jay Aikey, the Central PA Chamber's President & CEO, was named alongside 39 other women in the Women in Business's "Women Making a Difference" recognition program.

For the past nine years, Women in Business has been proud to recognize those women in central Pennsylvania whose intelligence, drive, determination and dedication have led to business success and community involvement.

The women showcased this year were selected from many nominations sent in by local business executives, community leaders and readers of the publication. The nominations were submitted to the St. Francis University Business Development Center for the final selection of candidates.

Women in Business thanks the selection committee at St. Francis University for once again lending their expertise to the process of selecting the talented women to be featured. Their dedication in identifying these exceptional honorees is greatly appreciated.

During these difficult times, it is important to remember that lives are filled with exceptional people who are truly making a difference in the work place and their communities.

Tea Jay has been with the Central PA Chamber since 2011, and became CEO in late 2017.

In the time she has been the CEO, the organization has achieved some major accomplishments, including obtaining its 500th member at any one time, the largest the membership has been in its 115-year history.

She's been involved with the Young Women's Futures Symposium, Leadercast Live, Toastmasters International, Salvation Army Advisory Board, Federal Prison Workforce Re-Entry, and Special Olympics.



Tea Jay Aikey

Nature's Medicines - Selinsgrove

SELINGSGROVE - Nature's Medicines, in Selinsgrove, recently implemented an employee of the month program.

According to General Manager Chenelle Harriman, it's based off of attendance, daily demeanor and feedback from customers.

Recently selected were Anthony Hamilton, head of security; Ivana Iluveras, receptionist; and Shuntill Snyder, assistant manager.



Anthony Hamilton

Ivana Iluveras

Shuntill Snyder

Mifflinburg Bank & Trust

MIFFLINBURG - Mifflinburg Bank & Trust recently welcomed Thomas Crissinger, Jr. as senior vice president and senior loan officer.

He is responsible for overseeing the bank's commercial and industrial loan relationships and guiding the bank's lending team. As a member of senior management, he will assist in directing the company's strategic goals.

Crissinger brings over 25 years of commercial lending experience. He earned his bachelor's degree in accounting from Bloomsburg University. He also holds diplomas from both the Central Atlantic School of Commercial Lending and the ABA Graduate School of Commercial Lending.

Crissinger is a board member of local community organizations, including the Penn Valley Airport Authority and the Greater Susquehanna Business Development Council. He is also part of the leadership team for Wesley United Methodist Church in Selinsgrove.

Crissinger was born and raised outside of Sunbury, and is a graduate of the Shikellamy School District. He and his wife, Kelly, reside in Winfield and have three sons – Colby, Ethan and Brady.

Evangelical Community Hospital

LEWISBURG - Evangelical Community Hospital has announced reappointments to its board of directors. The board of directors, made up of members of the community and medical staff, serve to guide the community hospital in meeting the healthcare needs of the areas the hospital serves.

Re-elected for a three-year term for the Class of 2023 were: Timothy Apple, Lewisburg; Roger Haddon Jr., President/CEO, Sunbury Broadcasting Corporation; Jeffrey Kapsar, President/CEO, Mifflinburg Bank & Trust; and David Zelechowski, MD, Internal Medicine of Evangelical-Lewisburg as the Medical Representative. Apple continues as chair of the board, with J. Donald Steele Jr. serving as vice chair.

Kathryn Giorgini, DO, will continue to serve as medical staff president for the hospital, while Kenneth Jusko, DO, has been named medical staff vice president. Additional medical staff representatives in addition to Dr. Zelechowski are Shawn McGlaughlin, MD, and Christopher Motto, MD.

Corporate officers of the board remain as Kendra Aucker, president; James A. Stopper, treasurer; and William Anderson III, corporate secretary.

In other news, Evangelical is pleased to welcome a new primary care physician, Matthew Wolcott, MD, to Family Medicine of Evangelical. Dr. Wolcott serves patients in both the Middleburg and Mifflinburg practices.

As a primary care physician, Dr. Wolcott specializes in the diseases and treatment of all family members of all ages—children and adults.

Dr. Wolcott received his Doctor of Allopathic Medicine from Rosalind Franklin University Medical School, North Chicago, Ill. In addition, Dr. Wolcott holds a Bachelor of Science Degree from George Mason University, a Master of Biomedical Sciences from Rosalind Franklin University Medical School, and a Master of Healthcare Administration and Management from Rosalind Franklin University Medical School. He completed his combined Internal Medicine and Pediatrics Residency at Geisinger Medical Center.

Prior to coming to Evangelical, Dr. Wolcott served as a primary care physician for pediatric and adult patients, including geriatric, at Geisinger Health System: Berwick Primary Care.

To make an appointment with Dr. Wolcott, call Family Medicine of Evangelical-Middleburg at 570-837-6163 or Family Medicine of Evangelical-Mifflinburg at 570-966-1122.

And, Aimee Noviello, RN, obstetric nurse at Evangelical Community Hospital's The Family Place, was presented the DAISY Award in late October.

The award is presented to a deserving nurse who exemplifies clinical expertise and compassionate care and is recognized as a role model in the nursing community.

Noviello was surrounded by her coworkers, as well as hospital and

nursing leadership, as she was presented with the award. She was nominated for the award by Kymberly Browne, LPN, Family Medicine of Evangelical, who experienced care under Noviello during the birthing process of her son. In the nomination, Browne said, "Aimee went above and beyond during my induction, laboring process and postpartum care. She always checked on me frequently to make sure I was doing okay, encouraged me, told me I was doing a great job, and made sure I was not in pain and healing after delivery."

Noviello, has been an obstetrics nurse at The Family Place for a decade. In her time working at Evangelical, she has assisted in the delivery of countless babies and provided the support needed to mothers as they go through the labor and delivery process.

The DAISY Foundation was established in 1999 in California by the family of J. Patrick Barnes, who died at the age of 33 from complications of an auto-immune disease. During his eight-week hospital stay, his family was impressed by the care and compassion his nurses provided, not only to him but to everyone in the family. They created the DAISY Award in his memory to recognize those nurses who make a big difference in the lives of so many people.

Nominations for the DAISY award can be made by patients, patient family members, colleagues, and providers. If an Evangelical Community Hospital nurse has displayed extraordinary clinical expertise and compassion, visit www.daisynomination.org/ECH and fill out a nomination form.



Aimee Noviello


Kingdom Kidz Inc.

WATSONTOWN - Kingdom Kidz Inc. has received a correspondence from GuideStar by Candid that they have completed required question fields requested of them as a non-profit and have demonstrated their commitment to non-profit transparency. Therefore, they have been awarded the Bronze Seal Star (basic information about the non-profit organization), Silver Seal Star (financial records available to the public) and the Gold Seal Star (highlights the organization's programs, projects, goals, strategies, capabilities, indicators, and progress).

The staff is currently working on the question fields for the final transparency seal star, Platinum, which will demonstrate their value with metrics showing their progress and results. GuideStar was one of the first central sources of information on US non-profits and is the world's largest source of information about non-profit organizations. It was founded in Williamsburg, Va. in September 1992 and received tax-exempt status in 1996, the same year the company began posting non-profit organizations' financial reports to the Internet. GuideStar also serves to verify that a recipient organization is established and that donated funds go where the donor intended. For more information concerning Kingdom Kidz, call the office at 570-838-3133 or visit their web site at www.hiskingdomkidz.org.



Dr. Matthew Wolcott



www.susquehannafire.com

Susquehanna Fire Equipment Co.

2122 Main Street
P O Box 209
Dewart, Pa 17730

- Portable Fire Extinguishers
- Emergency Lighting
- Backflow Water Testing
- Automatic Fire Suppression Systems
- AED
- Fixed Gas Detection Systems

- Rescue Equipment
- Portable Gas Detection
- Fire Equipment
- Breathing Air Compressors
- SCBA
- Training Classes

800-822-2105

Veterans Appreciation



The Central PA Chamber staff and several of its members participated in the 'Drive-Thru Veterans Appreciation Event' on Nov. 9 at the Susquehanna Valley Mall, organized by the offices of state Reps. Lynda Schlegel Culver and David Rowe, state Sen. John Gordner and Congressman Fred Keller. Close to 200 veterans made their way through a parade line as they were cheered on and thanked for their service and given several goodie bag items and mementos. From top left, moving clockwise, Michael Porter, Jessica Williams and Tea Jay Aikey of the Central PA Chamber cheer on the vets. Jeff Shaffer of the Chamber escorted Chamber volunteer Jim King, a Vietnam War veteran, through the parade line. Jordan Fetzer of Brookpark Pet Supply displays his gratitude along the parade route. A view from the busy parade line. And, Rep. Culver is interviewed about the event on WKOK before its started. Find more pictures from this event on the Chamber's Facebook page!



Anne Harshbarger of Belleville creates craft videos for Virtual CML while being recorded by Tori Callahan Geiger of Bloomsburg. Despite the pandemic, Camp Mount Luther made the most of summer camp this year.

A summer like no other

MIFFLINBURG - Camp Mount Luther held a summer camping season, but due to the pandemic, it was like none other in the camp's history.

Since traditional summer camp was cancelled, the camp engaged in some creative ways to still have camp activities despite not being together on-site.

Committed to providing some type of camp experience, 12 returning staffers were hired for three weeks to do leadership training, service work and develop a virtual camp. Three recorded Zoom worships were posted online prior to the staff's arrival on July 15. Then, Virtual CML launched on July 28, which the staff developed the two weeks prior. It was full of Facebook Live events, pre-

recorded videos, and activities to do at home. See more at www.campmountluther.org/coronavirus.

On Aug. 2, staff welcomed friends for three events. Former senior high campers reunited in the afternoon where they played frisbee golf, had take-out spaghetti dinner and took part in a outdoor worship service.

This year's theme was "From Generation to Generation." Campers explored the stories of familiar Bible characters and their responses to God's call and promised faithfulness in their lives. They saw how the enduring love instilled in the promise to Abraham and Sarah continues through Old Testament characters, to Jesus, to the early church, and on to them.

Guest Column

Hang up on scammers

Utility scammers never take a day off.

That's why we want to help you stop them at every turn. One of the best ways to help do that is to arm you with information on their tactics. Forewarned is forearmed.

A common thread among scammers is pressure. It's a red flag.

Scammers often threaten to shut off your service unless you pay them immediately. PPL would never do business like that.

If someone calls you or comes to your door with this kind of an ultimatum about your electric service:

- **Slow Down.** Take your time. Scammers often want you to act fast.

- **Verify.** Scammers can spoof phone numbers, trick you with emails, pose as real employees or even use COVID-19 information to bait you.

- **Stop before you act.** Utilities never demand payment by prepaid cards, Bitcoin or other methods.

Call PPL at 1-800-342-5775 if anything seems even slightly odd about the situa-

tion you're facing. Check out our scam awareness information at

pplweb.com/scams.

Americans lose millions of dollars to utility scams each year. We don't want you to lose one penny.

The Federal Trade Commission offers this additional advice:

- Thank the caller for the information. Then firmly tell them you will contact your utility directly.

- Even if the caller insists you have a past due bill or your services will be shut off, never give banking information over the phone unless you place the call to a number you know is legitimate.

- Tell your family and friends about the scam so they can protect themselves. If you got a scam call, chances are others in your community probably did too. Spread the word.

As your electric utility, our job goes beyond safely and reliably delivering your power. It's also about having your back. Let's work together to kick scams to the curb.

- Tracie Witter, Regional Affairs Director
PPL Electric Utilities
tlwitter@pplweb.com



When President Donald Trump visited the Williamsport Regional Airport for a campaign rally this fall, ClearView Asset Protection was requested by the U.S. Secret Service to assist in the security detail with its Smart Tower systems. Clearview provided surveillance systems and monitoring for the big event, strategically placing the Smart Towers in and around the airport. The integration of the system into the command centers allowed federal, state and local police departments to monitor the area even during the nighttime hours. For reasons of security, pictured is a Smart Tower at another location.

faxing mailboxing storing packing
printing boxing freighting copying
direct-mailing delivering brochuring
designing flyerings shredding
brochuring receivings supplying
storing packing postcarding

Every ing for small business.
And, of course, shipping.

The UPS Store

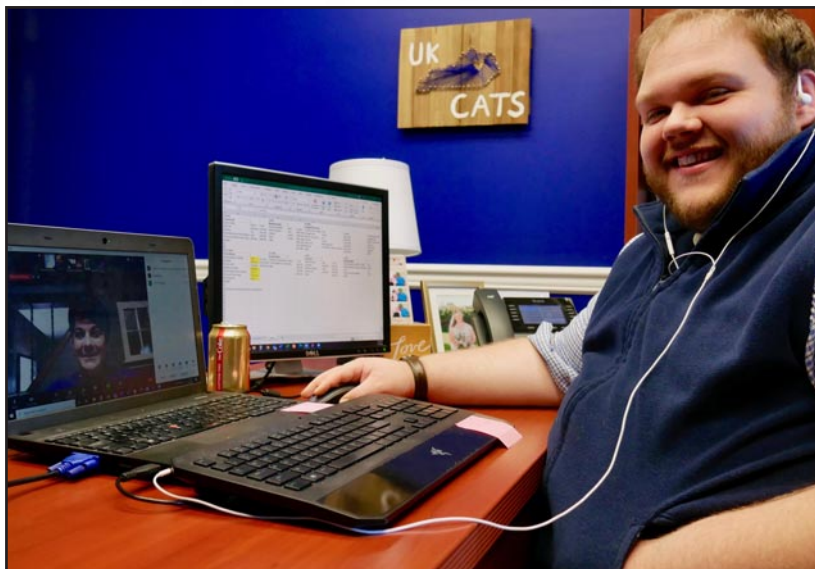
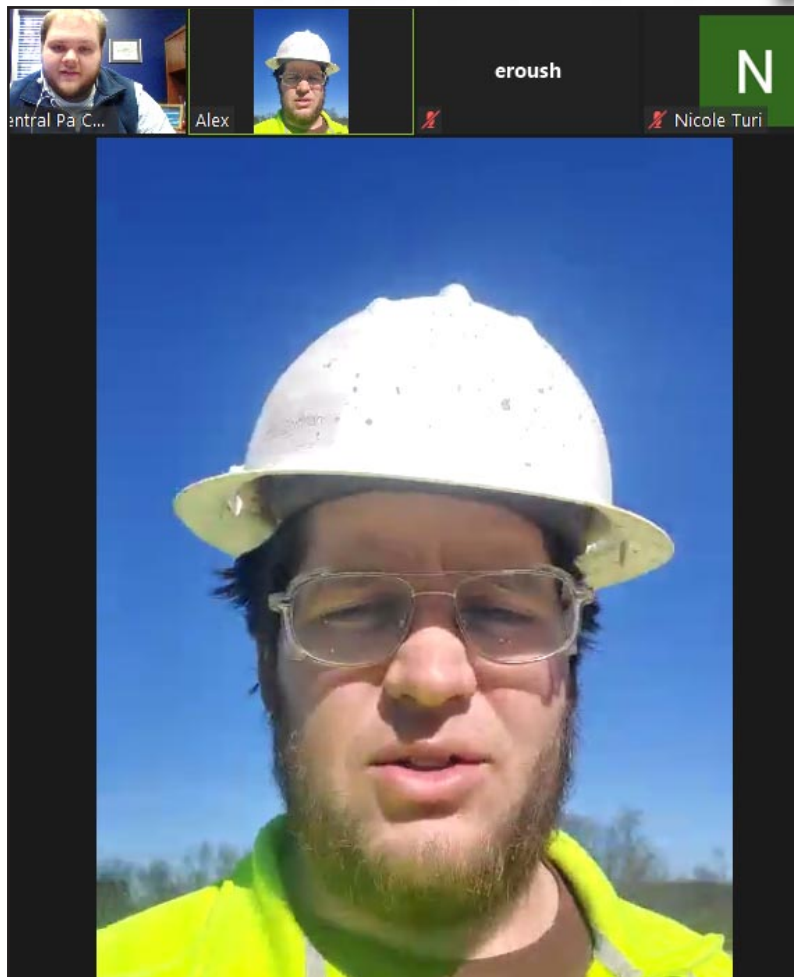


Penn House Commons
325 N 10th St, Ste 400
Lewisburg, PA 17837

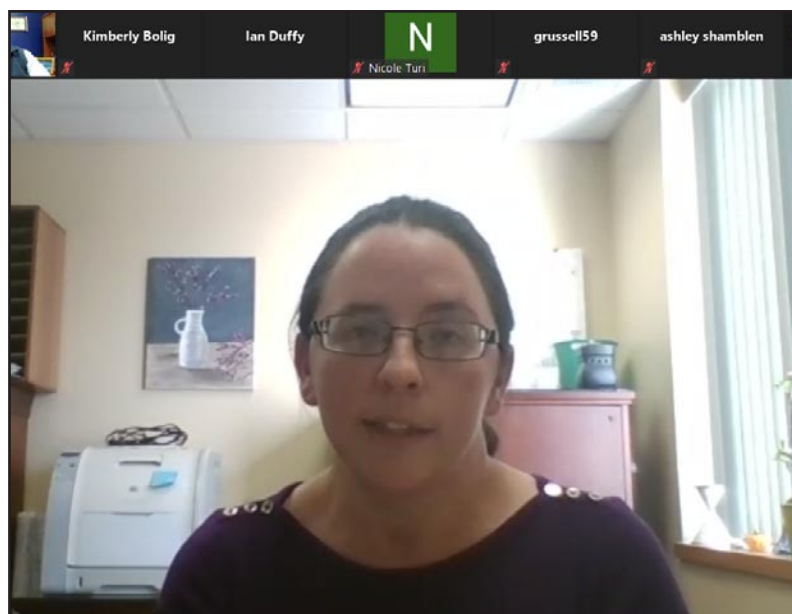
570.523.2611 Tel
store5918@theupsstore.com
theupsstore.com/5918

Business & Education

Careers explored online



The Central PA Career Fair, organized by the Central PA Chamber's Central PA Business & Education Association, was held virtually on Wednesday, Nov. 4. It featured seven different 'career clusters' throughout the day, and it was made available to 35 school districts within the Central PA region. Approximately 30 businesses and organizations were represented. This long-standing event is typically held in-person at the Milton Area High School, but the format was changed because of the COVID-19 Pandemic. Central PA Chamber members that presented included: Edward Jones - Shamokin Dam, Foundation for Free Enterprise Education (FFEE), Greater Susquehanna Valley YMCA - Milton, LEER Factory Outlet, McCann School of Business & Technology, Milton Regional Sewer Authority (MRSA), Nottingham Village Senior Living Community, Pinpoint Federal Credit Union, Service 1st Federal Credit Union, The Wealth Factory, T-Ross Brothers Construction, Tony's Custom Tailor Shop, United States Gypsum (USG), WVIA Public Media and Zartman Construction. Thank you to the presenters and all that participated. Each session is available for students to watch on the Central PA Chamber's YouTube Channel. The Central PA Career Fair was sponsored by the Central Susquehanna Intermediate Unit, The Daily Item and Thermo Fisher Scientific. Above, moving clockwise: Michael Porter, the Chamber's Education Coordinator, welcomes in guest speakers throughout the day. Genie Bausinger of MRSA presents during the STEM/STEAM segment. Dan Myers of Edward Jones talks to students during the financial cluster. And, Alex Zartman of Zartman Construction walks a job site while sharing his passion for the construction field.



New scholarship

BERWICK - Established in memory of a life dedicated to serving the community and bringing joy to all who knew her, the Central Susquehanna Community Foundation announces the creation of the Linda McNeal Scholarship Fund under the Warrior Run Education Foundation.

McNeal was retired from the Warrior Run School District, where she served as the business manager. Known as a vibrant and joyful woman, she enjoyed supporting her community and the people around her in any way possible.

Family and friends knew that creating a scholarship fund was the perfect way to honor her memory and passion after her passing in November. The Linda McNeal Scholarship Fund will provide an annual scholarship to a Warrior Run graduating senior

who is pursuing a certification or degree at a trade school. Special consideration will be given to students who have gained confidence and motivation to pursue a fulfilling career path through the encouragement of a teacher or mentor.

"Our hearts grieve at the passing of Linda. Her work at Warrior Run, beginning in the high school library and culminating in all areas of the business office, endeared her to students, staff, administrators, and community residents," wrote Sarah Kowalski, WREF. Contributions can be made to the Linda McNeal Scholarship Fund online at www.csgiving.org, or mail to the Central Susquehanna Community Foundation, Attn: Linda McNeal Scholarship Fund, 725 West Front Street, Berwick, PA 18603.



Thank you to everyone who supported the Central PA Business & Education Association's recent Mr. Sticky's Fundraiser! Nearly 350 sticky buns were sold, netting "B&E" more than \$500. How sweet it is!

CENTRAL PA BUSINESS & EDUCATION ASSOCIATION Seminar & Training Series

How to Deliver a Great Elevator Speech

9 to 11 a.m. Wednesday, February 3 @

Central PA Chamber of Commerce, 30 Lawton Lane, Milton

Cost: \$5 for Members/ \$10 for Non-Members

Register: www.centralpachamber.com/events

Presented by:

CENTRAL PA
CHAMBER OF COMMERCE

Michael's Minutes

Thank you for all the help



As the year comes to a close, now is a great opportunity to show my thanks for all the support we get from the Central PA Chamber membership.

Without the support of everyone involved with our programs, we would not have been able to host so many great events throughout the year, especially during the pandemic.

The Central PA Career Fair was held virtually for the first time. While there were many challenges and adaptations that needed to be made for the event, it was very successful! The businesses were able to make a lot of great connections with local students. In addition to that, students learned about the many different qualifications, education requirements, and qualities and attributes that employers are looking for when hiring new employees. The best improvement on this event is the ability for school districts across the area to have access to these recorded discussions for their students at any point throughout the year. They can all be found on our Central PA Chamber YouTube channel. This will be essential as schools continue to have issues with visitations their buildings.

Building Leaders for the Susquehanna Valley (BLSV) met this past month as well and learned about the importance of diversity and understanding how different personalities work together. Dr. Kim Bolig of Bloomsburg University STEM spoke with students about the Myers Briggs Analysis and provided each of them with their results. Students will use these to work more cohesively throughout the BLSV program on different projects throughout the school year. Soon, students will be learning about some of the great non-profits we have in our area and how they can become involved.

An upcoming event I would like everyone to join us for is our Fall Leadership Symposium on Dec. 9. This is a larger than normal Seminar & Training Series event as we will have two great seminars and a CEO Panel discussion all in one event. There are multiple ways to participate and this would not be possible without the help of Dr. Kevin Sensenig of Interaction Dynamics Group, as well as our CEO Panelists: Tea Jay Aikey, Central PA Chamber; Colleen Fritz, Heritage Springs Memory Care; Samuel Haulman, Service Electric Cablevision; Lauren McDonald, The Wealth Factory; and Todd Ross, T-Ross Brothers Construction. We have plans to host many more great seminars in 2021. Make sure to stay in touch with us to learn more!

Find the latest information at www.centralpachamber.com/events.

Michael

Michael Porter
Education Coordinator
mporter@centralpachamber.com



La Primavera Italiano Ristorante & Pizzeria

Fine Italian Cuisine

*Banquet Room Facilities
holds up to 160 people*

Titolari: Vito & Salvatore Mazzamuto
Rt. 45 west Lewisburg, PA Telephone: (570) 523-1515



Jessica's Jottings

Thinking ahead



Hello and welcome to December! We made it! If you are like me, you thought 2020 was never going to end. Well, we are in the home stretch and although there has been a lot of negatives this year, it is always in your best interest to focus on the positives.

It warms my heart to see so many people appreciating the little things in life and finding ways to thrive through this year. The Central PA Chamber of Commerce wants you to remember how you made it through 2020, but don't forget to prepare and be ready to tackle 2021!

Don't be apprehensive about scheduling celebratory events next year! As we move into 2021, events may still be structured differently, but don't let this stop you from celebrating your successes. Schedule a ribbon cutting, and we can help make this a safe and fun event while still getting you the exposure you want/need. With our ribbon cuttings you will get coverage before and after the event! This will be done in numerous ways, including through social media and right here in It's Your Business. Whether you can invite everyone, or keep it private, there is still a way to make sure your success is celebrated.

Take advantage of learning opportunities. Zoom and other online programs are becoming more popular and easier to navigate these days. With this, businesses/organizations are realizing there are different ways to get their message out to the public. Although nothing can replace the importance of in-person networking, having this option to connect with others is better than nothing. Here at the Chamber, we are working with our members to offer their services in-person and online. I encourage you to take the time to review our Seminar & Training Series events coming up next year. It's so important to continue to grow in your development as a business, organization and leader.

So, while it may still look bleak at times, just remember, there are many resources here to help. Whether that be friends, family and, yes, your Central PA Chamber of Commerce, we are here to help you realize how much you can accomplish even with government guidelines to follow.

Above are just a few ideas for your business to take advantage of, but there are many more we have to offer you. Let the Central PA Chamber of Commerce help move your business/organization into 2021 with confidence, positivity and hope.

Have a great holiday season and see you next year!

Jessica Williams
Finance & Membership Director
jwilliams@centralpachamber.com

Breakfast Briefing



On Oct. 30, Yogi at Shangri-La sponsored a Breakfast Briefing in the Smith Room at the Central PA Chamber. Instead of highlighting features of the local campground and newer amenities, Managers Tom and Dez Schulz discussed with the guests the importance of having the 'right' customers for your business. By taking a closer look at this during the pandemic, it allowed them to boost profit significantly. There was great conversation that followed and additional thought for everyone to take back to their businesses and organizations. The Central PA Chamber has three Breakfast Briefings scheduled for December, giving members and non-members alike additional opportunities to network and meet new potential clients, customers and partners. If unfamiliar with Breakfast Briefings, everyone attending is encouraged to give and 'Elevator Speech', in addition to hearing from the sponsors and learning more about Central PA Chamber benefits and upcoming events. Register at www.centralpachamber.com/events.

Comprehensive
Crime Victim
Services Center

transitions

SAFER FAMILIES. SAFER COMMUNITIES.

24-Hour Crisis Hotline
800-850-7948

A&A Construction And Services

Adam Wagner

(P) 570-204-9239 / (C) 570-989-1244
adam@aaconstructionandservices.com

www.aaconstructionandservices.com

Drywall / Painting / Home Repairs



Fully Insured - HIC#PA-155437

Miller family plaque unveiled



A commemorative plaque to recognize the Miller family's generosity, passion and vision in creating The Miller Center for Recreation and Wellness was recently unveiled. Located inside the center's main lobby, the plaque acknowledges the family's gift of the center to the community to enhance health and wellness.

Pictured, from left, are: Kendra Aucker, President/CEO, Evangelical Community Hospital; Kelly Miller Barrick with sons Will and Sam (back row); Dale and Joan Miller, Matt and Beth Miller with son Bobby and daughter Grace (up front), and Matt Walsh, Executive Vice President and Chief Operating Officer, Geisinger. Not pictured are Elena Barrick, daughter of Kelly Miller Barrick, and Max and Maddie Miller, children of Matt and Beth Miller.

No cost heating unit repair

LEWISBURG - SEDA-Council of Governments (SEDA-COG) offers a crisis program to residents who qualify for fuel assistance, the Low Income Home Energy Assistance Program (LIHEAP).

The program repairs a malfunctioning heating unit at no cost.

Call your county assistance office if there is a need:

Columbia: 570-387-4232

Juniata: 717-436-2158

Mifflin: 717-242-6095

Montour: 1-866-410-2093

Perry: 717-582-5038

Snyder: 570-372-1721

Union: 570-524-2201

The county assistance office will forward the completed referral to SEDA-COG to assign to a subcontractor.

For more information, call 570-522-7219.

Crisis Income Eligibility Guidelines; Family size:

1 - \$19,140; 2 - \$25,860;

3 - \$32,580; 4 - \$39,300;

5 - \$46,020; 6 - \$52,740;

7 - \$59,460; 8 - \$66,180.

Guest Column

Compliance Guidance

No matter what the future holds, business owners know that group health insurance regulations may change again sometime next year.

But in the meantime, employers can rely on insurance brokerage firms to help guide them through the maze of federal and state regulations imposed by the Affordable Care Act (ACA), the Employee Retirement Income Security Act (ERISA), and other laws.

Our job is to ease the burden of business owners so that instead of worrying about compliance with health insurance rules, they can focus on their organizations' success.

Compliance Analysis and Documents

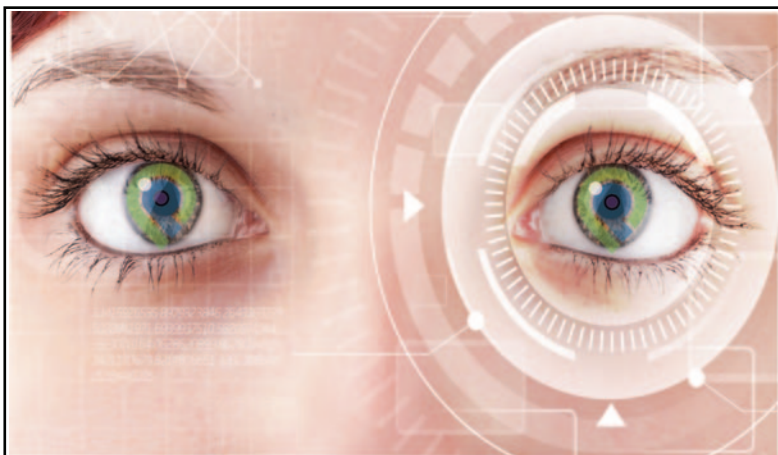
Swift Kennedy helps companies analyze their benefit plans for compliance with the ACA and ERISA in order to help them avoid time-consuming audits and stiff penalties for violations of these laws.

For example, businesses that are plan administrators are required by federal law to maintain and distribute Wrap Summary Plan Descriptions (SPDs), which wrap around the companies' certificates of insurance and benefit plan booklets. They must also administer their plans in accordance with a written Plan Document, which they are required to send to plan participants and beneficiaries upon request.

To help with compliance, Swift Kennedy generates these documents for clients and provides information on how and when to send them to plan participants. The agency also generates government-mandated Benefit Notices and Distribution Guidelines for clients.

What happens when regulations change? We inform clients about changes and give them guidance on how to comply with the new rules.

- Jerry Calistri, President & CEO,
Swift Kennedy & Associates
jerry@swiftkennedy.com



Your Vision for

Let Pinpoint Show You the Way to Financial Success Throughout the New Year and Beyond!

Pinpoint FEDERAL CREDIT UNION
Your Financial GPS.



Main Office
603 Center Street,
Milton, PA,
17847-2443

P: 570-742-3903 F: 570-742-0389

www.pinpointfcu.org

Lewisburg Office
at the McCann School of Business
7495 Westbranch Hwy,
Lewisburg, PA 17837

To advertise in *It's Your Business*,
call 570-742-7341
or e-mail jshaffer@centralpachamber.com



Find the latest COVID-19 news and information @
www.centralpachamber.com/covid-19

Join Us at these Upcoming Events!

All events are tentatively scheduled and may change depending on the COVID-19 situation

CENTRAL PA BUSINESS & EDUCATION ASSOCIATION Seminar & Training Series

Strength to Persevere Leadership Symposium

9 a.m. to 12:30 p.m. Wednesday, Dec. 9 @

Central PA Chamber of Commerce or Online via GoToWebinar

Cost: **\$40 In-person (includes lunch)** or **\$50 Online**

Register: www.centralpachamber.com/events

Presented by:



Featuring CEO Panelists:

Tea Jay Aikey, Colleen Fritz, Sam Haulman, Lauren McDonald, and Todd Ross

CENTRAL PA BUSINESS & EDUCATION ASSOCIATION Seminar & Training Series

Streamlining Your Digital Expenses & Subscriptions

9 to 11 a.m. Wednesday, December 16 @

Central PA Chamber of Commerce 30 Lawton Lane, Milton

Cost: **\$50 Members/ \$55 Non-Members**

Register: www.centralpachamber.com/events

Presented by:



Women Working Collaboratively, LLC
"Quality work requires it to be PROBLEM!"

BREAKFAST BRIEFING

7:30 to 9 a.m. Friday, Dec. 11 @
the Central PA Chamber of Commerce,
30 Lawton Lane, Milton.

Free to Attend - **Registration is Required**

Sponsored by:



BREAKFAST BRIEFING

7:30 to 9 a.m. Friday, Dec. 18 @
the Central PA Chamber of Commerce,
30 Lawton Lane, Milton.

Free to Attend - **Registration is Required**

Sponsored by:



Your Financial GPS.



TRB
T-ROSS BROTHERS
CONSTRUCTION INC.

First Impressions matter. From the facade to the front door, reception area to the breakroom, your building should be a reflection of your business. Considering a renovation or new space? Our Design-Build team is ready to take on your next project.

We don't just construct buildings. WE BUILD BUSINESSES.

Building for the Future

COMMERCIAL | INDUSTRIAL | DESIGN-BUILD | CONSTRUCTION MANAGEMENT
www.trossbrothers.com | 570-524-6411

BEND-FAB
STANDING SEAM METAL ROOFING
A DIVISION OF T-ROSS BROTHERS CONSTRUCTION

Superior Quality. Unmatched Versatility. Rugged Durability.

www.bend-fab.com
570.522.0042

shop.ncsight.com



We offer a wide variety of quality products!

Office Supplies • Furniture • Food Service • Janitorial & Sanitation • Technology

COMPARE & *SAVE!*



\$10.41 / PK

Compare and Save

\$16.49 Officedepot.com

\$16.49 OfficeMax.com

\$15.80 Staples.com

\$17.80 Granger.com

\$10.44 Amazon Business



\$2.29 / EA

Compare and Save

\$8.49 Amazon.com

\$4.00 Amazon Business

NORTH CENTRAL SIGHT SERVICES INC.

This Holiday Season, Shop with a Purpose

Proceeds provide programs, services & employment that help people who are blind or visually impaired live independently.



Follow Us!
@ncsight





North Central Sight Services, Inc. now offers USA made **Hand Sanitizer!** Available in liquid or gel in a variety of difference sizes. Proceeds provide services and employment that help people who are blind or visually impaired live independently and for the prevention of blindness.

FIGHT COVID-19, SUPPORT LOCAL

HAND SANITIZER

LIQUID - 80% Alcohol		Price Per Case			
Item Number	Description	Single Bottle	1-5 Cases	6-15 Cases	16+ Cases
6000.307000	8 oz Bottle with Sprayer (24/case)	\$ 4.89	\$ 112.56	\$ 107.76	\$ 102.96
6000.303000	16.9 oz Bottle with Sprayer (8/Case)	\$ 7.59	\$ 58.32	\$ 55.92	\$ 53.92
6000.304000	32 oz Bottle with Pump (12/Case)	\$ 11.39	\$ 130.68	\$ 125.88	\$ 119.88
6000.305000	Gallon Reg Cap (2/case)	\$ 34.69	\$ 67.18	\$ 63.98	\$ 59.98

		Price Per Unit			
Item Number	Description	1 Drum	2-4 Drums	5+ Drums	
6000.306000	55 Gallon Drum w/Pump	\$ 1,413	\$ 1,359	\$ 1,299	

GEL - 65% Alcohol		Price Per Unit			
Item Number	Description	Single Bottles	1-5 Cases	6-15 Cases	16+ Cases
6000.308000	8 oz Bottle with Pump (24/case)	\$ 5.49	\$ 124.56	\$ 119.76	\$ 114.96
6000.309000	16.9 oz Bottle with Pump	\$ 8.79	\$ 67.92	\$ 63.92	\$ 61.52
6000.310000	32 oz Bottle with Pump (12/Case)	\$ 13.49	\$ 155.88	\$ 149.88	\$ 143.88
6000.311000	Gallon Reg cap (2/case)	\$ 43.19	\$ 82.98	\$ 79.98	\$ 75.98

		Price Per Unit			
Item Number	Description	1 Drum	2-4 Drums	5+ Drums	
6000.312000	55 Gallon Drum w/Pump	\$ 1,849.00	\$ 1,799.00	\$ 1,699.00	

To purchase: Call (866) 320-2580 or Email sales@ncsight.org.

Pick-up is available through our walk-in Shredding Entrance.

Free Delivery within 50 miles of Williamsport.

Shipping is available at additional cost.