

It's YOUR BUSINESS

www.centralpachamber.com

Volume 5, Issue 7 - July 2020

CENTRAL PA
CHAMBER OF COMMERCE

Going 'green', pg. 3



'We're all essential', pg. 10



Board of Directors

Eric McDowell - Chairman The Coup Agency	Ron Mackley - 1st Vice Chair iHeartMedia - Williamsport/Shamokin
Lennea Brown - 2nd Vice Chair RiverWoods Senior Living Community	Cheryl Rheppard - Treasurer USG
Philip Campbell Lackawanna College - Sunbury Center	Beth George Meadowbrook Christian School
Alison Hall The UPS Store	Joel Harris The Salvation Army - Milton
Andrew Hertzler XW Construction	Rob Jones Milton Public Library
Lauren McDonald The Wealth Factory	Chris Pinchak Heaven's Best Carpet Cleaning
Todd Ross T-Ross Brothers Construction	Ellen Ruby Lewisburg Downtown Partnership
Adam Wolfe Pivot Physical Therapy	E. Terry Baldwin - Solicitor Baldwin & Baldwin

Staff

Tea Jay Aikey - President & CEO tjaikey@centralpachamber.com
Jeff Shaffer - Communication Director jshaffer@centralpachamber.com
Michael Porter - Education Coordinator mporter@centralpachamber.com
Jessica Williams - Finance & Membership Director jwilliams@centralpachamber.com

The Inside Scoop



The green light - when driving, it brings us a sense of relief that we can move ahead. I don't think anyone is excited to see a yellow or red light.

While "green" doesn't necessarily mean "green", according to state officials, it should be taken as a sign that we're returning to normalcy. Will there be some lasting changes - probably. If you think about other large-scale events, it has happened (e.g. 9/11). Here at the Chamber, we're thrilled to be moving forward, and we're sure many of you are, too. For a lot of people, there livelihoods have been on the line as many things just sat in limbo. Well, it's about time to move forward, however you deem appropriate.

We have ramped up production, especially when it comes to the events so many of you appreciate.

It's amazing how year-after-year, our Breakfast Briefings continue to be "sell outs". Do people just love our cooking that much?

No, we know it's about the connections you make. And despite how many times you attend, a new connection is waiting. Will it be a customer or client, or even a new business partner? Catch up on all things related on the next page.

Also in our cover story is the return of Seminar & Training Series classes.

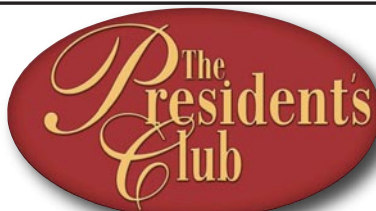
If you believe in learning, you know there is no end to it. In fact, you may have realized how much more you need to know as the pandemic seemingly winds down. We're working on that. We want as many businesses and organizations as possible to be prepared if something like this happens again.

Do you have expertise already? Please, share it. We're so much stronger together.

This edition of IYB also includes the regular features you enjoy, plus even some comeback stories and ways members continue to strive and thrive with the uncertainties of life around them.

Enjoy the issue!

Jeff Shaffer, Editor
Communication Director
jshaffer@centralpachamber.com



Ann Hilliard - RE/MAX Bridges
Coldwell Banker Penn One Real Estate ■ Davis, Davis & Kaar
Decal Dynasty ■ Evangelical Community Hospital
Green Ridge Graphics ■ Heritage Springs Memory Care
Hosterman Photography & Design ■ iHeartMedia
Interaction Dynamics Group ■ Jersey Shore State Bank
La Primavera Italiano Ristorante & Pizzeria ■ Lawton Insurance Agency
Lewisburg Pharmacy ■ LIVIC Civil ■ Mifflinburg Bank & Trust
Milton Savings Bank ■ North Central Sight Services
North Shore Railroad ■ On Fire Promotions
PenTeleData ■ PPL Electric Utilities
Practical Business Solutions ■ Riverwoods Senior Living Community
Safeguard Business Systems ■ Service 1st Federal Credit Union
Service Electric Cablevision/SECV8 ■ Seven Mountains Media
Stahl Sheaffer Engineering ■ Susquehanna Fire Equipment Company
Susquehanna Valley Limousine ■ T-Ross Brothers Construction
The Daily Item ■ The Standard-Journal ■ The Wealth Factory
Unique Inspirations Limited ■ Watsontown Dental ■ XW Construction

The President's Club is an exclusive sponsorship program created to prominently recognize companies that contribute to the Central PA Chamber over and above their annual membership investment. For more information, call 570-742-7341.

It's Your Business Deadlines

August Issue
News/Ads July 17 -- Insert Flyers July 22

Interested in advertising in this publication?
Contact Jeff at jshaffer@centralpachamber.com or call 570-742-7341

Find FREE copies of *It's Your Business* at these Chamber member locations:

Lewisburg

Country Cupboard ■ Lewisburg Borough ■ Lewisburg Hotel
Lewisburg Pharmacy ■ McCann School of Business & Technology

Mifflinburg

A+ Office Outlet

Milton

Baldwin & Baldwin ■ Central Vision Eyecare ■ D & S Event Center
Milton Public Library ■ Pinpoint Federal Credit Union

Watsontown

Watson Inn ■ Watsontown Dental, PC

Sunbury

City of Sunbury Office ■ Sunbury Revitalization ■ The Dip-In

Going 'green'

MILTON - Last month, about two-thirds of Pennsylvania's counties entered Gov. Tom Wolf's "Green Phase", which includes a large majority of the Central PA Chamber membership.

It was a cause for celebration in the Central PA region, following months of turmoil in the personal and professional lives of many.

While this "green" isn't the equivalent of stepping on the gas pedal at a stop light, it continues to be a step in the right direction to normalcy. It has allowed many Central PA Chamber members to reopen their doors and livelihoods, and a chance to rebuild what they work so hard at to accomplish.

As always, the Central PA Chamber of Commerce is ready to help. While some popular events were canceled or put on hiatus, the Chamber plans to rebound - three-fold in some instances - to the benefit of the members.

Normally, the Chamber hosts about a half dozen Breakfast Briefings over the course of a year, plus a few occasional off-site partnerships.

As of this time, the Chamber is committed to at least 12 Breakfast Briefings between July and the end of the year.

The events have proven time and again, a breakfast with your neighbors can reap major benefits.



Breakfast Briefings are returning in a big way for the second half of 2020. In all, there are 12 scheduled between this month and the end of the year. If interested in being a sponsor, you better hurry! Call Jessica Williams at 570-742-7341.

History has shown people need each other to press on. It can take many forms, from basic encouragement to all-in partnerships. This and anything in between can start over a cup of coffee and breakfast at the Central PA Chamber. We hope to see you! Register for the free Breakfast Briefings at www.centralpachamber.com/events.

Both members and non-members are welcome.

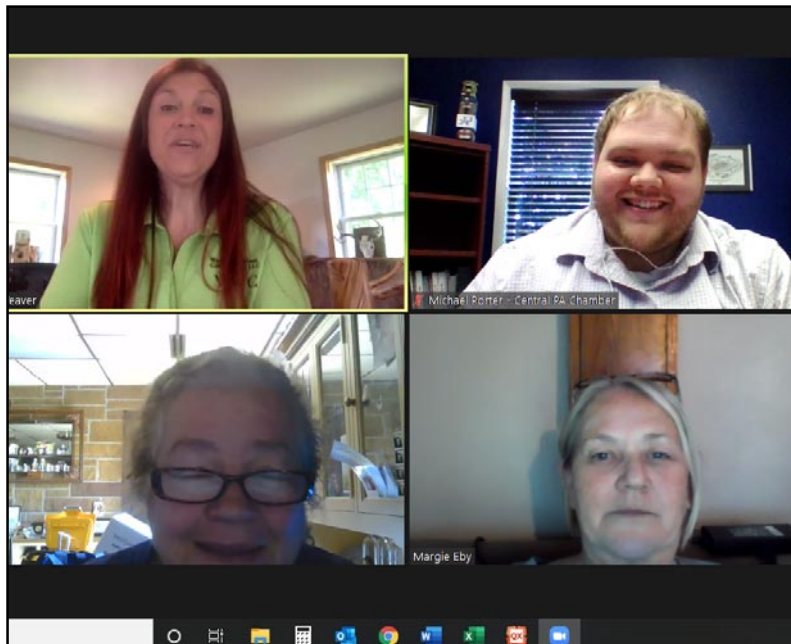
This is a chance to meet approximately 30 other business-minded individuals. The probability is very high that you'll meet someone who you will enjoy doing business with.

All Breakfast Briefings are sponsored by Central PA Chamber members, who help open the events by talking about their business or organization and how they can assist you. Interested in sponsoring a Breakfast Briefing? There are only a couple of opportunities remaining! Contact Jessica Williams, Finance & Membership Director, at 570-742-7341 or e-mail jwilliams@centralpachamber.com, if interested.

Sponsor portions are followed by "elevator pitches" by everyone in the room, giving them a quick introduction to all who attend. At the end of the event, which runs from 7:30 to 9 a.m. on designated Fridays, many people excitedly make their way around the room, exchanging salutations and business cards.

Before that, the Central PA Chamber staff make introductions and discuss other forthcoming events and opportunities.

In addition, the popular Seminar & Training Series, where the Chamber partners with members to educate fellow members on important topics, is returning in full force.



We're also seeing a return of Seminar & Training Series classes as the pandemic seemingly winds down in PA. On June 17, Wendy Weaver of Weaver Wireless Consultants (top left) hosted a webinar to discuss the 'Benefits of Cloud Services', a valuable tool to understand whether you're working from home or not. Interested in being a S&T presenter? Call Michael Porter at 570-742-7341. See upcoming classes in this issue of IYB and at www.centralpachamber.com/events.

See "Green" (on page 11)



Quality Collision Repairs on
All Domestic & Foreign Cars & Trucks
Alignment Specialists • State Inspection
Towing & Rollback Service

47 Apple Street • Milton, PA 17847
Phone: (570) 742-9627

Davis, Davis & Kaar

Attorneys at Law

*Wills & Estate Planning * Real Estate *
*Family Law * Business Law * Personal Injuries *

37 N. Arch Street, Milton, PA
P.O. Box 319

Phone: 570-742-8777 Fax: 570-742-6155

New Members

Nature's Medicines

1420 North Susquehanna Trail
Selinsgrove, PA 17870
570-828-3999

chenelleh@naturesmedicines.com

Chenelle Harriman - General Manager

www.naturesmedicines.com

Nature's Medicines is a licensed, non-profit, award-winning medical marijuana dispensary known for our high standards of safety, purity, consistency and sustainability. Offering an impressive selection of premium dry leaf, vape pens, concentrates, oils, topical ointments and edible treats, we strive to put your well-being at the forefront of everything we do.

Our Nature's Medicines staff is proud to be part of the Selinsgrove community. We are welcoming, compassionate and highly-trained to guide you to the products and methods best suited to your personal needs.

As advocates of holistic wellness and self-care, Nature's Medicines is dedicated to enhancing your life naturally through the therapeutic benefits of cannabis.

IT Data Consultants

132 South Second Street
Sunbury, PA 17801
570-286-9922

jason@controlpaper.com

Jason Harris - CEO

www.controlpaper.com

From data creation to end of data life management, we are here to assist you. Remote office technology services along with longterm information storage solutions.

Bloomsburg Neighbors / Lewisburg Living

1204 Grandview Road
Bloomsburg, PA 17815
570-380-0630

kwillis@bestversionmedia.com

Ken Willis - Publisher

https://www.facebook.com/pg/Bloomsburg-Neighbors-Best-Version-Media-386970465492603/

Bloomsburg Neighbors & Lewisburg Living are personalized and exclusive magazines with locally-based content. We bring people together by providing a high-quality, full-color publication that reflects the integrity and pride of the local communities we serve. We help build close-knit communities by producing magazines that are delivered monthly to specifically-targeted homeowners across our local area and give business owners a uniquely effective branding campaign experience.

Membership Renewals

(As of June 15, 2020)

Camelot Inspections
Caring Communities for AIDS
Central Vision Eyecare
- Lewisburg
Central Vision Eyecare
- Milton
CSP Office Equipment
Company
Fulton Bank - Lewisburg
Gregory Katherman
Griffith Development
Heritage Printing & Design
Jersey Mike's Subs
- Lewisburg
Kevin's Garage
Keystone Advertising
Specialties
Keystone Sporting Arms
MaxWorx (A Division of Hope

Enterprises, Inc.)
Mid-State Mechanical
Contractors
Mostly Mutts
Nesco Resource (DePasquale
Staffing Services)
Roupp Funeral Home
Ruby Ribbon
Sugar Creative Agency
Sunsational Family
Campground
Tastefully Simple
The Graphic Hive
The Little Sportsman Shop
Villager Realty, Inc. of
Lewisburg
W & L Nissan
W & L Subaru
Watson Dental
Weis Center for the
Performing Arts

**Do you like
discounts on
products
and services?**

Visit

www.centralpachamber.com

and click on

**"Member-to-Member
Discounts" under the
"Membership" tab.**

**Want to offer a discount to fellow
Central PA Chamber members?**

E-mail jshaffer@centralpachamber.com.

**CONNECT
WITH US!**



Internet • TV • Home Phone
HDTV • DVR • On Demand • TV Everywhere

SERVICE ELECTRIC
CABLEVISION

secv.com • 800.522.2389





Chris Herbster, PT

(570) 768-4562

cherbster@phoenixrehab.com

159 AJK Blvd., Lewisburg

What makes your business unique?

We cater directly to each individual according to their needs, and we try to keep a light atmosphere and have fun while doing serious work. We also work well with injured workers in order to get them back to their jobs safely and quickly.

How do you market your business?

Mainly through social media as well as word of mouth and grassroots type outreach. We contact and maintain relationships with area physicians' offices as

well as area businesses relating to injured employees.

How many does your business employ?

Three

Finish this sentence – "On a day off I..." Get caught up around my home and spend time outdoors.

Words to live by?

Put your faith in Jesus and don't worry. Treat everyone with kindness and be quick to listen and slow to speak.

What are your top 3 company priorities?

Treating people right, with integrity and always listen generously.

What are the characteristics you look for in employees?

Dependability, adaptability and a grounded personality.

What philanthropic causes does your business support?

Soles 4 Souls and Feeding America.

Lauren McDonald, CEO

(570) 971-4016

laurenm@twfplan.com

25 S. 4th St., Lewisburg

**THE WEALTH FACTORY****What makes your business unique?**

The Wealth Factory is unique because it provides holistic focus on our customers lives. Their goals and dreams count for more than the size of their investments.

How do you market your business?

We market our business through referrals, and build our reputations by how we perform for our clients and our community.

What is your Mission Statement?

To assist each prospect in defining their needs in financial terms and finding the best resources to help them meet those needs.

How many does your business employ?

Just two.

Advice to those who own a business?

Create a strategic plan with timelines and benchmarks. And, don't be afraid to ask for advice and assistance along the way.

Finish this sentence – "On a day off I..." Gain perspective by spending quality time with my family.

Words to live by?

Pursue excellence for its own sake.

What are your top 3 company priorities?

1. Expertise
2. Resources
3. Quality measurements

What are the characteristics you look for in employees?

Integrity, ambition and a sense of humor.

What philanthropic causes does your business support?

The Central PA Chamber of Commerce, Central PA Business & Education Association, Lewisburg Arts Council, Clinton County Arts Council, YMCA, Lycoming College.

Want to appear in the Member Spotlight?

E-mail Jessica Williams at
jwilliams@centralpachamber.com
for details!



DECAL APPLICATION & REMOVAL

Fleet & Truck Markings,
Custom Striping, Labels, Magnetic Signs,
Contractor Job Site Signs, Posters,
Window & Wall Graphics, Building Letters

A Quality Service

decaldynasty.net • 17355 Old Turnpike Road (Rt 45), Millmont, PA 17845



www.BHSHodrickRealty.com

BERKSHIRE HATHAWAY | Hodrick Realty
HomeServices

1100 West Market Street
Lewisburg, PA 17837
570-523-1000

1070 Bloom Road
Danville, PA 17821
570-275-7696

What's Happening



downtown
BINGO
Lewisburg

SHOP AND WIN
JUNE 6 - JULY 12, 2020

TO PRINT YOUR CARDS GO TO:
WWW.LEWISBURGPA.COM/BINGO2020




SRI postpones events

SUNBURY - Several changes have been made to the Sunbury's Revitalization, Inc. events calendar.

"A large portion of what we do at Sunbury's Revitalization, Inc. is community events. While we have been working from home, we have continued planning these events are moving forward as best we can."

The annual Susquehanna River Clean Up Committee has decided to postpone its event until the fall. Anyone interested in taking part should look for updates on the SRI Facebook page.

The summer movie series that takes place at the Riverfront Park in the city is currently "on hold". SRI is confident that its dedicated group of volunteers can move quickly to organize

when the situation improves further.

The popular Sunbury Sandwich Stroll is being postponed until sometime in the early fall. There is a Facebook event page that will keep those interested up-to-date.

The Brews on Lake Augusta Wine & Beer Festival has also been postponed, and the location will change. "Brews" will now be held on Dec. 12 indoors at The Albright Center for the Arts. Details will be shared on Facebook and www.sunburyrevitalization.org as they become available.

And, as you may have heard, the decision was made to cancel the annual River Festival. Planning takes a considerable amount of time. In fact, planning will begin in January for next year's River Festival.

BREAKFAST BRIEFING

7:30 to 9 a.m. Friday, Aug. 7 @
the Central PA Chamber of Commerce,
30 Lawton Lane, Milton.

Free to Attend - **Registration is Required**

Sponsored by:



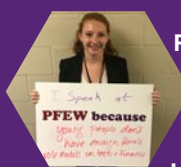
THE WEALTH FACTORY

**FOUNDATION FOR
FREE
ENTERPRISE
EDUCATION**
excellence in learning

Speaker Series

Explore Our FREE Virtual Opportunities!
http://www.pfew.org/speaker_series.php

Browse Our Video Collection of Postsecondary Preparation and Career Exploration Resources



Explore A Variety of Careers!
Find Tips From Industry Professionals!
Get Advice From the Experts!
Build A Mentor Relationship!
Learn Real World Skills!
Help Yourself Hit The Ground Running!



Join LIVE Zoom Webinars Every Thursday @ 8pm!

CENTRAL PA CHAMBER OF COMMERCE INSIDE JOBS

12 p.m. Wednesday, Sept. 23

@ Yogi at Shangri-La

670 Hidden Paradise Road, Milton

Featuring:



- Take a Fall Hayride and see the Halloween Trail
- Wear shoes appropriate for an easy hiking trail
- Lunch provided (RSVP required)

Inside Jobs offers members a chance to tour facilities of fellow businesses/organizations.
Find tour details and register @ www.centralpachamber.com/events.

BREAKFAST BRIEFING

7:30 to 9 a.m. Friday, Sept. 4 @
the Central PA Chamber of Commerce,
30 Lawton Lane, Milton.

Free to Attend - **Registration is Required**

Sponsored by:

**BLOOMSBURG
NEIGHBORS**

& Lewisburg Living

Find the latest Seminar & Training
class information @
www.centralpachamber.com/events

Community yard sale

WILLIAMSPORT - West Branch School is hosting a community yard sale in July.

It will be held from 8 a.m. to 2 p.m. on Friday and Saturday, July 17 & 18 at West Branch School, 755 Moore Ave., Williamsport. Items for sale will include: children's clothes, toys, household items, books, electronics and much more. All money raised will benefit the school.

West Branch School's Little Red Schoolhouse is located in the Newberry section of Williamsport.

With its unique style and homey atmosphere, WBS has a charm like no other school in the area. Classes are facilitated in a "one room schoolhouse" setting, where all learning levels and ages mix together to enhance learning opportunities and the overall school community.

For more information, visit www.westbranchschool.org.

Legislative Breakfast

7:30 to 9 a.m. Friday, Sept. 18 @
Country Cupboard, Lewisburg

Topic: Local Issues

Admission: \$15 - Registration is Required

Premier Sponsor:



Susquehanna Valley
Community Education Project

Facilitating the establishment of a Susquehanna Valley Community College

**Need something
someone else has?**

**Let's help
each other!**

**Have something that
someone else needs?**

CENTRAL PA
CHAMBER OF COMMERCE

For more information, visit us on Facebook!

Date	Event	Location	Time	Cost
7/16/20	Funding for Energy Efficiency Equipment Upgrades	Webinar	12 to 1 p.m.	Free
7/29/20	Pennsylvania Tax Credits Information Session	IMC, 1127 W. 4th St., Williamsport	11:30 a.m. to 1:30 p.m.	Free
8/11/20	North Central PA Energy Efficiency Roundtable	Toftrees, One Country Club Lane, State College	8 a.m. to 2 p.m.	Free

IMC INNOVATIVE MANUFACTURERS' CENTER

Lauri Moon
Manager, Training & Outreach
570-329-3200 ext 8085
www.imcpa.com/events

S B D C
PENNSYLVANIA

**Small Business
Development Center**
Bucknell University

570-577-1249
www.bucknell.edu/sbdc

Date	Event	Location	Time	Cost
7/15/20	Rep. Lynda Culver Presents: Business Startup Basics	Webinar	10 a.m. to 12 p.m.	Free
<p>Have you dreamed of being your own boss for many years but don't know where to start? Do you ask questions like: "How do I turn my good idea into a successful business?"..."What kind of forms and licenses do I need?"..."Where can I find financing?"..."Where is the best place to open my business?"..."What is a business plan and how do I prepare one?"</p> <p>The first step to starting a successful new venture is to contact the Small Business Development Center at Bucknell University!</p>				

SEDA-COG YOUR GRANT ONE STOP SHOP



WHY SEDA-COG?

- \$120 BILLION SECURED
- 1,000+ PROJECTS
- 34 YEARS
- 12 DEDICATED STAFF

WE GET PROJECTS FUNDED & DELIVERED

We secure grants and deliver projects with our full suite of grant services.

APPLICATION

We write & secure grants for you!

COMPLIANCE

We know the in's and out's of each step & make it easy for you!

ADMINISTRATION

We work the project A-Z from application through project close-out!

RACP

Redevelopment Assistance Capital Program (RACP):

Funding for large construction projects that create jobs and enhance the economy.

GRANTS WE SECURE

- RACP
- Community Development Block Grant (CDBG)
- Emergency Solutions Grant (ESG)
- Economic Development Administration (EDA)
- H2O & Small Water & Stream
- DCNR (C2P2)

570-524-4491

201 Furnace Road, Lewisburg

www.seda-cog.org

Evan Golf Classic

LEWISBURG - Evangelical Community Hospital will host its 34th Annual Golf Classic Event on Friday, Aug. 14 at the Susquehanna Valley Country Club in Selinsgrove.

The scramble format event has morning and afternoon shot-gun starts available at 8 a.m. and 1:30 p.m. Entry fee for each golfer is \$125 and includes: green fees, golf cart, refreshments on the course and meals. In light of the COVID-19 pandemic, some aspects of this event are subject to change.

The Golf Classic event raises funds for life-sustaining treatments performed by the trained paramedics and emergency medical technicians of Evangelical Regional Mobile Medical Services (ERMMS). These emergency responders also provide vital patient information to Emergency Department personnel before the patient arrives at the ED doors.

This year's event features on-the-course contests and a chance to win 2020 Ford Escape from Selinsgrove Ford with a hole-in-one on the course. Quandel Construction is the main Golf Classic Event Sponsor. Other sponsorship opportunities are available for those looking to support ERMMS. Awards to the top three teams in the morning and afternoon will be announced after all golfers have returned their score cards.

"Over the years, this annual event has raised nearly \$1,037,000," said Donna Schuck, Associate Vice President/Chief Development Officer at Evangelical. "We are extremely grateful to the sponsors, participants, and donors whose contributions make the tournament a great success. This event is about more than just a day on the golf course, it's about providing necessary funds to support lifesaving services."

ERMMS staff answer over 12,000 calls per year with 50 percent of those being medical emergencies, 40 percent being trauma, and 10 percent classified as other. All ERMMS paramedics are nationally registered and cover territories in: Lewisburg, Watsontown, Mifflinburg, White Deer Township, Milton, Middleburg, New Columbia and the surrounding areas.

This year has proven even more challenging for emergency response staff who are activated to assist in triaging and caring for patients before arriving to the Hospital. The COVID-19 pandemic saw an increased amount of calls, with higher sensitivity to the spread of infectious disease. Even greater precautions were in place for each and every call and the need for personal protective and specialized equipment to keep both staff and patients safe increased at an alarming rate.

Nick Klose, Clinical Director of ERMMS said, "I couldn't be prouder of how the ERMMS staff have stepped up to provide the best possible care of patients during the COVID-19 response. They continue to serve with the greatest amount of compassion during very difficult times. Dollars at this event enable the Hospital to provide the equipment and medical supply tools our EMTs and paramedics need to save lives." For more information on registration, sponsorships, and to be part of the 34th Annual Evangelical Golf Classic, call 570-522-4850 or e-mail fundraising@evanhospital.com.

ERMMS is a non-profit organization that works with community ambulance agencies to supplement their needs in a meaningful way. ERMMS provides the equipment and experts needed to either fully administer or supplement existing emergency response programs so that communities of the area have mobile medical services available to them in time of a healthcare emergency.

Giving Closet

DONATIONS ARE NEEDED!

**New and unused personal care
and food items including:**

- toothpaste
- deodorant
- soap
- tissues
- diapers
- non-perishable food items



The Giving Closet is open for any RiverWoods staff member in need. Donations can be dropped off at the Adams Center reception desk.
Clothing or furniture items will not be accepted.

Let Your Life Shine...Brighter Together!
RIVER WOODS
an Albright Care Services Retirement Living Community

BREAKFAST BRIEFING

7:30 to 9 a.m. Friday, Aug. 14 @
the Central PA Chamber of Commerce,
30 Lawton Lane, Milton.

Free to Attend - **Registration is Required**

Sponsored by: **RE/MAX**
Outstanding Agents
Outstanding Results®



2nd ANNUAL GOLF OUTING



Details @ www.dwellorphancare.org

**Sunday, Sept. 20, 2020
1:00 p.m. – 5:00 p.m.**

**White Deer Golf Complex
Montgomery, PA 17752**

Lewisburg Lodge No. 96 Independent Order of Odd Fellows



Since 1844
New Columbia, PA

Seeking donations of Victorian / early 1900's
household furnishings



Please help us furnish our beautiful 1870
lodge with authentic Victorian furniture,
household goods, silverware, china, crystal, etc.

The Lodge may be rented by the public for events
to help us raise funds for those in need and programs we support.
Perfect location for weddings, corporate events, dinner parties, etc.
All donations are tax deductible.

For donation information or to rent this beautiful and historic
property for your next event:

info@iooflewisburg.org or (570) 541-3494
www.iooflewisburg.org

Smart & Creative for over 35 years!

The professional team at AdOne Advertising & Design
has been providing our customers with creative solutions
and award-winning designs for over 35 years. Let us help
you find the perfect way to promote your company
with competitive pricing and fast turn times.

AdOne
advertising & design



570-286-1111
mypromotionalneeds.com



Time with Tea Jay

Feelings coming out of the pandemic

The old phrase "You don't know what you have until it is gone" comes to mind so much lately.

Being away from you, our members, and the team (board directors, committee members, staff and volunteers) was very hard for me personally.

I often refer to the Central PA Chamber of Commerce as a "family". Please, know that I do not make that statement lightly. You are my family!

As I write this, we're officially open to you at our Milton office. While we kept in touch the nearly three months working off site, we were apart, and it was such a rush to be back together again at the office. I call it my "second home."

In June, we had our first on site board of directors meeting since before the pandemic, and to see the smiles on everyone's faces to be together again was very invigorating. There is no doubt that your Chamber truly believes in the value you have and is totally invested in "Helping Our Region Grow."

There are silver linings in everything and that includes the COVID-19 pandemic. A member recently shared a story with me about a longtime customer. While she was forced to close her business, and unable to provide service, the customer still mailed her a check for the payment of the service they would have received each month during the closure. Stories like these continue to reinforce what wonderful people we are fortunate to have living and working in our region.

During the pandemic, there were certain labels put on businesses, employers and employees alike. In my personal opinion, it caused unintentional and an unnecessary divide among co-workers, friends, family and beyond.

I struggled with the terms "unessential" and "essential" being used to describe people's livelihoods. I felt the need to make a difference for those who were feeling unappreciated as they were labeled "non-essential" as well as those who were feeling a bit above themselves as they were now deemed "essential". I connected with a member to see if I could have bracelets custom made to rectify these terms in my own way. With the input of the team, I was able to nail down a phrase – "We're all essential".

The bracelets are now in my possession, and if you would like to proudly wear one, please, let me know.

Also, take some time and reflect on your silver linings from the experiences you've endured related to COVID-19. They could be personal or professional.

I know it is easy to recall the frustration and hardships, but you should focus on the positives.

You'll be surprised how it will help you thrive as an essential member of my family!



Tea Jay

Tea Jay Aikey
President & CEO

tjaikey@centralpachamber.com

'We're all essential'



Tea Jay Aikey, Central PA Chamber President & CEO, recently presented 'We're all essential' bracelets to members of the Chamber's Executive Committee. From left, are: Ron Mackley, First Vice Chair, iHeartMedia - Williamsport/Shamokin; Cheryl Rheppard, Treasurer, USG; and Eric McDowell, Board Chairman, The Coup Agency. If interested in having your own bracelet, contact Tea Jay at tjaikey@centralpachamber.com, or stop by the office at 30 Lawton Lane, Milton.

WELCOME TO YOUR LOCAL SOURCE FOR BANKING

We know local markets, we make local decisions,
and we'll find an account that works for you.

milton
SAVINGS BANK

Member FDIC



CHECKING, SAVINGS & LENDING SOLUTIONS

CALL 570-742-8541 OR VISIT US TO GET STARTED

80 BROADWAY STREET | MILTON, PA 17847 | WWW.MILTONSAVINGSBANK.COM

"Green" (from page 3)

There is no shortage of ideas, however, the Chamber staff is always interested to know what topics may be of interest to you as a member. Always seeking to be "the preferred resource center," the Chamber wants to know about what you need.

Have a topic suggestion for an S&T class? Contact Michael Porter, Education Coordinator, at mporter@centralpachamber.com or 570-742-7341.

Many events in the next couple of months can be found in this issue, but for the most up-to-date information, visit www.centralpachamber.com/events. Here you can find more details and register.

BREAKFAST BRIEFINGS

**Open to all local businesses
and organizations
(registration required)**

All Breakfast Briefings held from
7:30 to 9 a.m. on the following Fridays
@ the Central PA Chamber of Commerce,
30 Lawton Lane, Milton

July 24 Sponsor: XW Construction
Aug. 7 Sponsor: The Wealth Factory
Aug. 14 Sponsor: Ann Hilliard - RE/MAX Bridges
Sept. 4 Sponsor: Bloomsburg Neighbors/Lewisburg Living
Sept. 25 Sponsor: Welch Performance Consulting
Oct. 2 Sponsor: Designer Homes of PA
Oct. 16 Sponsor: The UPS Store - Lewisburg
Oct. 30 Sponsor: Yogi at Shangri-La
Nov. 20 Sponsor: Meixell Diehl Insurance
Dec. 4 *Call 570-742-7341 for availability
Dec. 11 Sponsor: Raceway Mobile Storage
Dec. 18 *Call 570-742-7341 for availability



Learn more and register @ www.centralpachamber.com/events

We are offering **FREE** confidential discussions on
strategies and options for members with
concerns about financial viability after COVID-19.



THE WEALTH FACTORY

25 S 4th St, Lewisburg PA 17837

1-888-347-2080

twfteam@twfplan.com

Securities and advisory services offered through LPL Financial.
Member FINRA/SIPC.



What do you do when you go 'green'? You go out to celebrate. On June 12, when the Central PA Chamber's home county of Northumberland entered the green phase, as well as Union and Columbia counties locally, the Chamber staff enjoyed a meal out at longtime member Ciro's in Watsontown. Thanks for a great meal! From left, are: Jeff Shaffer, Communication Director; Jessica Williams, Finance & Membership Director; Michael Porter, Education Coordinator; and Tea Jay Aikey, President & CEO

Looking to hire or even be hired?

**JOB
OPENINGS**

Visit
www.centralpachamber.com
and click on
"Job Opportunities" under the
"Economic Development" tab.

**Want to post a job your business or
organization has available?
E-mail jshaffer@centralpachamber.com.**

Members Recognized

Central PA Chamber of Commerce

MILTON - Tea Jay Aikey, President & CEO of the Central PA Chamber of Commerce, has applied to be a Fellow in the 2020-21 Class of The Appalachian Leadership Institute.

The Appalachian Leadership Institute is a comprehensive leadership and economic development training opportunity for people who live and/or work in Appalachia and are passionate about helping their communities thrive.

The Appalachian Leadership Institute is limited to 40 Fellows annually, drawn from Appalachia's public, private and non-profit sectors. They will participate in an extensive training curriculum developed by the Appalachian Regional Commission (ARC) in partnership with the University of Tennessee, Knoxville; The Howard H. Baker Jr. Center for Public Policy; Tuskegee University; and Collective Impact.

According to ARC, Appalachia is a 205,000-square-mile region that follows the spine of the Appalachian Mountains from southern New York to northern Mississippi. It includes all of West Virginia and parts of 12 other states: Alabama, Georgia, Kentucky, Maryland, Mississippi, New York, North Carolina, Ohio, Pennsylvania, South Carolina, Tennessee and Virginia.

The all-inclusive, nine-month program runs from October – July and includes skill-building seminars, best practice reviews, and field visits during six separate sessions across the region and followed by a capstone graduation event held in Washington, D.C. Fellows are chosen via a competitive application process and each class will include representatives from each of the thirteen states in the ARC footprint to reflect the region's diverse economic development challenges, opportunities and strategies.

"As one of my letters of recommendation stated perfectly, the additional skills and experiences I can access at the institute will enhance my 'toolkit' as I lead our region to continued smart growth and prosperity for years to come," Aikey said.

Over the past two years, the Central PA Chamber and its Milton Area Industrial Development Association (MAIDA) worked fervently to support a project providing tax incentives for businesses and manufacturers to relocate in Northumberland County, providing jobs and broadening the tax base.

"We coordinated with three local taxing bodies to support the Keystone Opportunity Zone," Aikey said. "The acquisition of the KOZ status was key to getting occupancy of a 120,000-square-foot manufacturing site that was vacant for more than 10 years. This project alone will create or retain over 60 positions and ensure an investment of \$6.5 million in the Milton Industrial Park.

"It's my hope inclusion in The Appalachian Leadership Institute will allow me, and ultimately the Central PA region, to expand on our most recent successes."

Coldwell Banker Penn One Real Estate

LEWISBURG - Several sales associates/representatives of Coldwell Banker Penn One Real Estate in Lewisburg recently received recognition for their business successes.

Douglas Wertz earned membership in the company's International President's Premier. This award represents the top one percent of all sales associates/representatives worldwide in the Coldwell Banker system qualified for this distinguished



Tea Jay Aikey

award. Brett Barrick and Lise Barrick both qualified to join the company's International President's Circle. This prestigious recognition has been

awarded to the top five percent of all sales associates/representatives worldwide in the Coldwell Banker system. Jodie Bryant and Peggy Bouton earned membership in the company's International Diamond Society, a level achieved by only the top ten percent of all sales associates/representatives worldwide in the Coldwell Banker system.

And, Mark J. O'Brien has been honored as a member of the company's International Sterling Society. This membership was awarded to the top fifteen percent of all sales associates/representatives worldwide in the Coldwell Banker system.



Brett Barrick



Lise Barrick



Jodie Bryant



Peg Bouton



Mark J. O'Brien

Herbert, Rowland & Grubic (HRG)

LEWISBURG - Herbert, Rowland & Grubic, Inc. (HRG) is pleased to announce that Allen Snyder has joined the firm as chief financial officer.

He will serve as Bruce Yerger's successor, who announced his plans to retire later this year.

"We've worked extremely hard over the past several years to improve our revenues and profitability while maintaining our commitment to high quality client service" Yerger said. "I am confident that Allen will lead HRG to continued growth and profitability, and I'm excited to work by his side to help him get started."

Snyder brings more than 25 years of experience in accounting and finance to the position. He most recently served as the interim chief financial officer, senior vice president, and controller at Sports Information Group, a digital publishing company based in New York City.

Company president Jason Fralick is excited for the fresh perspective Snyder will bring as someone whose experience extends beyond the architecture, engineering, and construction industry.

"Bruce helped HRG build a solid foundation for success through strong business fundamentals and an employee-ownership culture that prioritizes business and financial stewardship across the company," he said. "I'm excited about the opportunities Allen brings to HRG, and I believe he is the right person to continue the modernization and growth-focused initiatives outlined in our strategic plan. "We're grateful Bruce is willing to support Allen as he assimilates to our organization, learns our processes, and develops relationships with our employee-owners. Allen's vision will be part of a bright future for HRG, and that future wouldn't be possible without the leadership and mentorship Bruce has provided the company and our leadership team over the past 11 years."



Allen Snyder



Douglas Wertz

Evangelical Community Hospital

LEWISBURG - Urgent Care of Evangelical, located at West Branch Medical Center, 7095 West Branch Highway, Lewisburg, has been recertified by the Urgent Care Association of America, which distinguishes it as an urgent care center that meets all criteria needed to deliver high-quality care.

Urgent Care of Evangelical provides patients with walk-in, extended hour medical attention with licensed providers for a large scope of medical conditions.

The healthcare environment is constantly changing, and it is becoming more and more important for patients to understand their treatment options.

Urgent care is a convenient and viable option for medical conditions that cannot wait for a scheduled appointment with a primary care physician. Medical issues such as strep throat, complications of colds, rashes, unexpected cuts, burns, sprains or minor fractures are just a few of the conditions where urgent care should be considered. Urgent Care of Evangelical is equipped with x-ray, laboratory services, and a licensed provider is always available to perform minor procedures like splinting and suturing.

Urgent care fills the gap between primary care and hospital emergency rooms, offering increased convenience and cost savings. With its recertification, Urgent Care of Evangelical and the Urgent Care Association of America demonstrate their commitment toward providing patients with access to appropriate levels of care when needed.

Urgent Care of Evangelical is open from 8 a.m. to 8 p.m., seven days a week. For more information, visit www.evanhospital.com/urgentcare.

In other news, Evangelical has welcomed several advanced practitioners to its family of services.

Advanced practitioners are a group of medical professionals that include physician assistants and advanced practice registered nurses, who have higher levels of training and certifications, allowing them to care for patients in a variety of care settings.

Advanced practitioners joining or moving within the Evangelical Community Hospital family of practices are:

- Rachel Carr, Certified Physician Assistant—Heart and Vascular Center of Evangelical;
- Holly Kifer, Certified Nurse Midwife—OB/GYN of Evangelical;
- Kaity McCaffery, Certified Physician Assistant—Hospitalist Group, Evangelical Community Hospital;
- Brian Nungesser, Certified Registered Nurse Anesthetist—Anesthesiology of Evangelical;
- Ashlynn Rice, Certified Physician Assistant—Nocturnist/General Surgery, Evangelical Community Hospital;
- John Stoltzfus, Certified Physician Assistant—Family Medicine of Evangelical – Mifflinburg.

RiverWoods Senior Living Community

LEWISBURG - A World War II veteran from RiverWoods Senior Living Community celebrated his 102nd birthday on June 4.

Due to restrictions at the nursing care center, Carl Phillips celebrated his birthday indoors, but had several visitors outside the window to his room. The first visit was the color guard from American Legion Post 182, along with Richard Chalmers, the American Legion Post Commander for the 18th District in Pennsylvania. Next up were five members of the Lewisburg Area High School Marching Band, who played a patriotic tune saluting Phillips.



Carl Phillips

See "Members Recognized" (on page 19)

Membership Liaison Spotlight



Tina Nail, Owner

Nailed It Business Services

tnail@naileditbusinessservices.com

Why are you a Membership Liaison?

I wanted to be a Membership Liaison because as passionate as the staff is about Central PA Chamber of Commerce, the perspective of a current member is more powerful. After all, there is no better spokesperson for an organization or business than a customer.

What is your favorite member benefit and why?

My favorite benefit is networking. There are so many businesses in our community that I never knew existed. The networking events have given me the opportunity to learn from people I wouldn't have otherwise connected with.

What other activities do you involve yourself with?

I am proud to be a part of the Raising the Board program. I think it is sorely needed and an incredible value. I am also a full-time caregiver for an Alzheimer's patient, and I am actively involved with Haven-to-Home Canine Rescue and SUN P.E.T.S.

How do you feel about the Central PA Chamber overall?

Honestly, the referral program gave my business its start, so it means a lot to me. Becoming a member is one of the best decisions I made during my first year of business. I also love that there is an active campaign to groom the next generation of business owners through job shadowing, career fairs and more.

What do you most want new members/prospects to know about the Central PA Chamber?

You should know that the staff at the Central PA Chamber of Commerce wants you to succeed. They will reach out to you with opportunities. They will answer questions, make referrals, and actively seek to get you involved with Chamber activities. It's not just because it benefits the Chamber, but because it will benefit you.

Working with the Central PA Chamber's Engagement Team, Membership Liaisons are available to discuss the benefits of Central PA Chamber membership with any interested member or non-member.

Learn more about benefits @

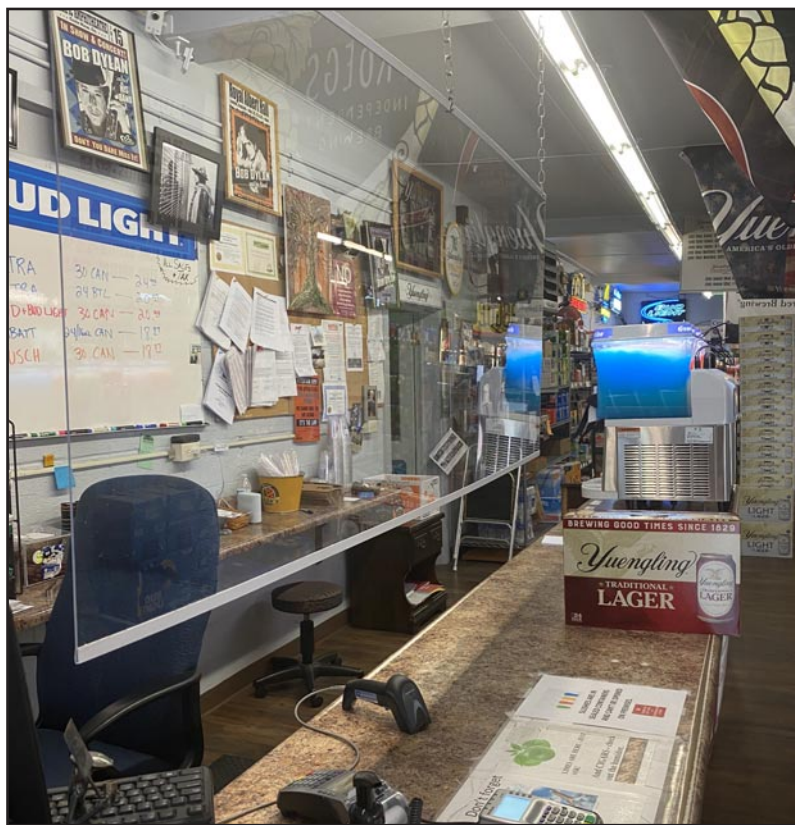
www.centralpachamber.com/membership/benefits.



2122 Main Street
P O Box 209
Dewart, Pa 17730

- Portable Fire Extinguishers
- Emergency Lighting
- Backflow Water Testing
- Automatic Fire Suppression Systems
- AED
- Fixed Gas Detection Systems
- Rescue Equipment
- Portable Gas Detection
- Fire Equipment
- Breathing Air Compressors
- SCBA
- Training Classes

800-822-2105



An example of a 'sneeze guard' installed by T-Ross Brothers Construction at W and S Distributors, near Northumberland.

T-Ross continues growth

MONTANDON - T-Ross Brothers Construction has generated a variety of new business despite the current economy due to COVID-19.

Businesses that have remained open, and others re-opening, are needing protection against outside contamination for their employees and customers. New projects have included the installation of protection panels, or sneeze guards, for local restaurants and retail stores, quarantine doors for medical offices and senior living facilities and much more.

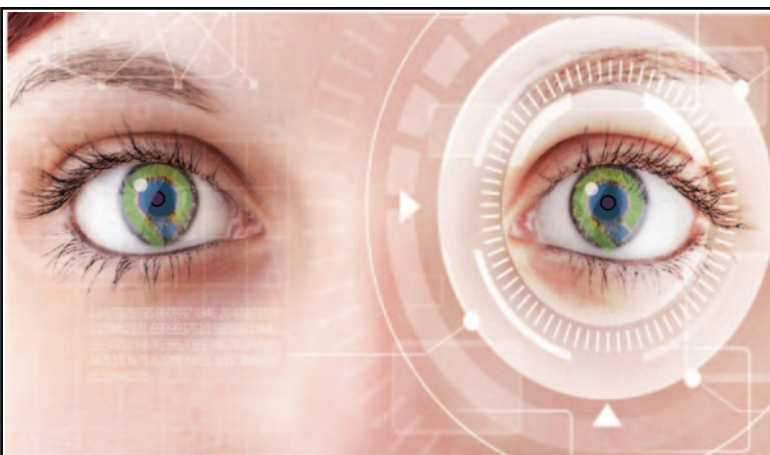
At the start of the COVID shut-downs, TRB could only maintain work at a handful of job sites. However, after submitting various clearances and adhering to very specific guidelines, TRB was able to

quickly get back to work. Their growth also included several new employees and they are continuing to hire, as of press time.

"COVID-19 has created very uncertain times for not only Americans but all individuals worldwide," said Todd Ross, President and CEO. "I am very grateful and feel extremely fortunate that the pandemic did not affect T-Ross Brothers as it did many other businesses. Our hardworking staff has quickly adjusted to the necessary changes on job sites and at our office to ensure safety for not only our employees but the customers we serve." As of May 1, T-Ross Brothers has been working at full capacity on all projects, following all guidelines and maintaining the welfare of all employees.



A new eatery in Beaver Springs has a colorful new look, thanks to Middle Creek Signs. The owners of J'Amy's Summer Chill & 522 Grill contacted MCS for logo development. It was designed with the funky, retro feel that they wanted and soon had a whole list of places to use it. From then on, all graphics were designed with matching fonts, colors and shapes. Over a few months, MCS produced and installed their main sign/message board, trailer graphics, menu boards, parking signs and table tops. MCS says branding, such as this, is key to a professional and well-structured look, proven to give customers confidence in your company.



Your Vision for
Let Pinpoint Show You the Way
to Financial Success Throughout
the New Year and Beyond!



Pinpoint
FEDERAL CREDIT UNION
Your Financial GPS.

Main Office
603 Center Street,
Milton, PA,
17847-2443
P: 570-742-3903 F: 570-742-0389
www.pinpointfcu.org

Lewisburg Office
at the McCann School of Business
7495 Westbranch Hwy,
Lewisburg, PA 17837

SOLD

Don't worry we've done this a million times

RE/MAX
BRIDGES

633 N. Derr Dr.
Lewisburg, PA 17837
570-768-4792

RE/MAX
RIVER VALLEY REALTY

166 Eighth St.
Northumberland, PA 17857
570-473-8888

Funds available to residents

LEWISBURG - SEDA-COG (Council of Governments) has announced funding opportunities available to area residents.

From now through August, residents in Columbia, Juniata, Mifflin, Montour, Perry, Snyder and Union counties may qualify to have their heating unit repaired or replaced, thanks to CARES Act funds.

It is called the LIHEAP (Low Income Home Energy Assistance Program) Recovery Crisis Program.

Mandy Fox, chief of SEDA-COG's Weatherization program, said the timing is crucial for many families.

"This is a benefit to those who may have lost their jobs or substantial income due to the pandemic and may not have qualified when the regular Cold Weather Crisis program closed," Fox said.

The \$159,000 CARES funds awarded to SEDA-COG is to repair or replace heating units.

For those whose heat source is malfunctioning, they should call their county assistance office, which will forward the completed referral to SEDA-COG to assign to a subcontractor.

SEDA-COG and its subcontractors will follow Centers for Disease and Control and Prevention (CDC) guidelines and use the proper Personal Protection Equipment (PPE) during home visits. SEDA-COG asks those who have been sick, have symptoms, or have been in contact with someone diagnosed with COVID-19 that they reschedule their appointments.

County assistance offices can be reached at - Columbia: 570-387-4200; Juniata: 717-436-2158; Mifflin: 717-248-6746; Montour:

570-275-7430; Perry: 1-800-991-1929; Snyder: 570-374-8126; Union: 570-524-2201.

For more information on the recovery program, call Christine Bohart at 570-522-7219. And, in other news, housing rehabilitation grants were awarded to Milton Borough, Montour County, South Williamsport Borough and the City of Sunbury.

Each is receiving \$500,000 for no-cost home repairs for eligible residents. Residents may be eligible for up to \$65,000 in repairs to their homes, dependent upon local rehabilitation guidelines. The waitlists are currently full since the potential grant awards were publicized last year when the applications were submitted in September.

Work is expected to begin this fall.

The funds are from the U.S. Housing and Urban Development's HOME program and were recently awarded to the communities by the state Department of Community and Economic Development.

Teri Provost, director of SEDA-COG's Housing Rehabilitation program, spoke of the value of the program.

"When we partner with communities on these efforts, it helps the homeowner, it maintains the communities' tax base, and it increases property values," she said.

Eligible repairs include: structural, roofing, plumbing, electrical, heating/furnace, window replacement, radon and lead-based paint mitigation, and energy-related improvements. Also included are modifications for mobility-impaired residents. There is no cost to homeowners who maintain home residency over a five-year period from the date of signing.

SEDA-COG oversees the entire process for

the homeowner.

"We make the project easy on the homeowner by managing it from start to finish, including obtaining the contractor," Provost said.

Interested homeowners who want to be on the waitlist for future grant opportunities may call SEDA-COG's Stacy Anderson at 800-326-9310.

CPACC supports protecting employers, healthcare

HARRISBURG - The Central PA Chamber joined 80 other chambers across the state in support of a letter sent to state and federal lawmakers, urging support for providing the employer and healthcare communities with temporary safe harbor from unwarranted lawsuits, while still holding bad actors accountable.

There's worry that there will be unwarranted lawsuits alleging exposure to COVID-19 on a company's premises or through their activities or products. Claims would be difficult to prove or disprove. Many businesses are already compromised financially, and could even be put out of business with settlements or litigation.

"For the foreseeable future, employers will be subject to strict workplace health requirements and those who take necessary precautions to protect customers and employees should proceed with confidence...", the letter from the PA Chamber of Business & Industry continued.

LIVE

HIGH SCHOOL SPORTS AND MORE

High School Sports and More Exclusively on
Service Electric Cablevision Channel 508 HD or 8 SD.



Check secv8.com for a complete schedule!

faxing mailboxing storing packing
printing boxing freighting copying
direct-mailing delivering brochuring
designing flyerings shredding
brochuring receivings supplying
storing packing postcarding

Every ing for small business.
And, of course, shipping.

The UPS Store



Penn House Commons
325 N 10th St, Ste 400
Lewisburg, PA 17837

570.523.2611 Tel
store5918@theupsstore.com
theupsstore.com/5918

Business & Education

Congratulations, graduates!



The Central PA Chamber of Commerce and its Central PA Business & Education Association congratulate all recent area graduates, including members: Lewisburg Area High School, Meadowbrook Christian School, Milton Area High School and Warrior Run High School. We know graduation wasn't what you imagined, but we're glad to see you were able to make the most of it! Above, at left, Eric Baker, Milton's Class Valedictorian, receives his diploma at the school's outdoor ceremony. Photo by Hosterman Photography & Design. At right, students at Meadowbrook Christian School are cheered on by a parade of supporters outside of the school.

19th Annual "B&E" Golf Tournament

Friday, August 21

Bucknell Golf Club, Lewisburg

Master Sponsor:



For details/register: www.centralpachamber.com/events
 For sponsorship opportunities: mporter@centralpachamber.com

Introducing...



Mr. & Mrs. Michael Porter, Jr., who were married on May 23 at Beaver Run Mennonite Church, Limestoneville, before a small group of family and friends. Michael is the son of Michael Sr. and Tracey Porter of Ashland, Ky. The former Leslie Kate McManus is the daughter of Mike and Lisa McManus of Limestoneville. The newlyweds adhered to the COVID-19 guidelines for their special day, and a second wedding and much larger celebration with family and friends is planned for late August. Congratulations, Michael and Leslie! Your Central PA Chamber family is very happy for you both!

Photo by: Alexis Brooke Photography

Scholarship winners

MIFFLINBURG - Mifflinburg Bank & Trust Company announced their annual scholarship award winners.

They are Caitlin Harro of Selinsgrove Area High School, Matthew Reber of Mifflinburg Area High School and Gabrielle Markunas of Lewisburg Area High School. Each student will receive \$1,000 per year for four years.

Harro plans to attend Susquehanna University and major in accounting. Reber also plans to attend Susquehanna University with a major in international business. Markunas plans to major in

business, organizations and management at Gettysburg College.

Mifflinburg Bank & Trust has been offering its scholarship program since 2017.

Scholarship winners must have a minimum GPA of 2.8 and plan to attend a two- or four-year accredited college for a business-related degree.

They must have a record of volunteerism in non-school sponsored activities in the community and participation in extracurricular school activities.

Michael's Minutes

Another school year complete

Although it wasn't as we imagined, it was wonderful getting to see so many of our local high school seniors have their graduation ceremonies in honor of their hard work and determination, especially through the recent pandemic. Along with graduation is a time of celebration, and we are so excited to be able to celebrate the students that participated in our programs.

This marks an ending for some, but it also marks the beginning of another school year. For us, it's another amazing year to help impact our region by working with amazing local students! We have already sent out applications for next year's Building Leaders for the Susquehanna Valley (BLSV) students, to be chosen by their local school districts. In addition, we're planning for students to participate in our fall Central PA Career Fair in November!

As we prepare for all our programs to start up in the fall, we are slated to have our 19th Annual Business & Education Association Golf Tournament on Aug. 21 at Bucknell Golf Club, Lewisburg. If you would be interested in golfing, sponsoring or volunteering at the event, please, e-mail me. The Master Sponsor is T-Ross Brothers Construction.

That same day, we will be holding our 5th Annual Golf Ball Drop! This event is for all you non-golfers out there that still want to support local students and have a chance to win some cash. Tickets for the event are \$10 each and give you a chance to win a portion of the money raised from this event. We will drop the numbered golf balls from a crane and the three closest to the hole win. To purchase a ticket and support our local students, please, visit www.centralpachamber.com/events. The Golf Ball Drop is sponsored by Service 1st Federal Credit Union.

School Counts! will be another program starting up in the fall for "B&E". We will be encouraging students sign up to show their dedication to attendance, hard work, a positive attitude and effort through this program. If you value these skills in an employee, please, consider signing up to be a School Counts! Employer. When a student proves they have achieved this credential, it may allow them to have an advantage in the hiring process at many businesses throughout the region. If you would like to learn more about this program, visit www.centralpachamber.com/school-counts.

There are so many ways to get involved and show our support for our local students, especially after pulling through the pandemic. If you would like to help support these students through any of our programs, don't hesitate to reach out to me.

Michael

Michael Porter
Education Coordinator
mporter@centralpachamber.com



La Primavera
Italiano Ristorante
& Pizzeria

Fine Italian Cuisine

Banquet Room Facilities
holds up to 160 people

Titolari: Vito & Salvatore Mazzamuto
Rt. 45 west Lewisburg, PA Telephone: (570) 523-1515



Jessica's Jottings

What is a Chamber for?

A Chamber of Commerce - what does it do and how does it help?

Almost every community has access to a Chamber of Commerce, but many community members have no idea what they are. This is a serious issue because many people are missing a great resource to help with their businesses, organizations and their everyday needs. Although every Chamber is different in the way it conducts itself, I would like to take the time to educate you on what the Central PA Chamber of Commerce is and how we offer help to our members.

Two years ago, I applied for a job with the Central PA Chamber, and honestly, I did not know how involved a Chamber gets with the community and how it helps. Now, I wonder how people still don't know about Chambers!

Let's start with resources. Many people automatically go to Google to look up businesses for services they may need. Instead of spending time sorting through pages of information on Google, why not go directly to the Central PA Chamber of Commerce web site? Here you will see a directory of businesses in the area ranging from accommodations to utilities. What's even better is that we offer our members a chance to display their web site and social media links, physical address, e-mail address, phone number and a primary contact. This way, the community members have many reliable ways of connecting with the business or organization. Our listings are always updated because that is one of our jobs here at the Chamber, to make sure our members' information is accurate, legit and up-to-date.

Presence in the community is another great aspect to the Chamber. We are here to help our communities grow and thrive. In order to achieve this, we believe in having a strong connection with our local downtown organizations. This can be as simple as attending events in the community, to helping with the selling of buildings and land so businesses can grow in our areas. The Central PA Chamber also holds events that help community members and businesses network and learn together. Some examples are: Breakfast Briefings, ribbon cuttings, Legislative Breakfasts and Seminar & Training Series classes.

I could go on, but what I will do is implore you to take the time and read this entire magazine and check out our web site www.centralpachamber.com to learn more about our Chamber and our members! If you have questions, comments or concerns, feel free to reach out to us or stop by the office. We are always here to offer a listening ear and help you with your business and organizational needs.



Jessica Williams
Finance & Membership Director
williams@centralpachamber.com



Enhanced virtual benefits platform

WILLIAMSPORT - Swift Kennedy & Associates, an insurance brokerage firm, is now offering an enhanced virtual employee benefits platform to help employers, human resources/benefits staff, and employees face the challenges of the current fast-paced, ever-changing business environment.

"The reason we're offering these enhanced virtual services is that we believe employee benefits are personal and understand that the current business environment has created many new challenges for purchasing and renewing plan offerings, day-to-day administration, employee engagement, and education of new hires," said Jerry Calistri, Swift Kennedy's President and CEO.

This digital platform will give business owners the option of virtual face-to-face meetings with benefit specialists to review and discuss insurance options, strategies and renewals in the comfort of their own office. It will also provide decision makers with online benefit administration, virtual open enrollment meetings, group outreach opportunities, employee education and day-to-day support.

In addition, this communications portal will offer employee engagement, individualized employee enrollments, Benefits App for benefit communication and ID cards. Employees will also have access to a virtual benefit support team that is available via phone, web chat or video conference to review and discuss benefit-related items. Swift Kennedy, which is offering its clients this service for free, will also remain available for employer on site meetings when clients request them.

"We believe that going virtual should be an integral part of any employer's group benefit planning, because modernizing this aspect of their business will allow them to keep up with the many important changes now happening in health insurance and benefits administration," Calistri said.

Swift Kennedy, which specializes in group employee benefits, individual plans, and senior policies, helps businesses find affordable employee benefit plans, including: medical, dental, vision, life, disability and alternative funding options. This full-service agency offers all health insurance carriers in PA and has offices in Williamsport, State College, DuBois, Wilkes-Barre and Virginia Beach.

Comprehensive
Crime Victim
Services Center

transitions

SAFER FAMILIES. SAFER COMMUNITIES.

24-Hour Crisis Hotline
800-850-7948

Stop & visit
anytime
between
7:30 - 9 a.m.
the first
Monday of
every month
@ 30 Lawton
Lane, Milton.

Membership
Mondays

CENTRAL PA
CHAMBER OF COMMERCE

Have a cup of
coffee and
learn more
about the
benefits of
Central PA
Chamber
membership!

To register, visit www.centralpachamber.com/events

"Members Recognized" (from page 13)

Congressman Fred Keller was also in attendance and presented a proclamation to Phillips for his years of service in World War II. Several members of Phillips family were also on hand for the celebration.

Phillips was born in Wesleyville and married Jeannie Phillips, who passed away in 2017. He has four children: Jan Henry of Vermont, Jack Phillips of New York, Myrton Phillips of Florida and Carla Shreck of Watsonstown, who is deceased. Phillips also has multiple grandchildren and great grandchildren, many of whom visited on his birthday.

Phillips was a "Sea Bee" in the Navy during World War II, which was the Construction Battalion, serving in the 115th Naval Battalion. He spent time in New Guinea and the Philippines. After the war, Phillips worked as an RV repairman until his retirement. He has lived at RiverWoods since May 2015.

Phillips enjoys Bible study, virtual prayer meetings, listening to music and looking at hundreds of photos he has in picture albums on his computer. He has been enjoying Zoom calls with his two sons and daughter and their families while visitation is restricted due to COVID-19 concerns.

"I don't really feel that old. I slow down a bit every year, but I don't feel 102," Phillips said.

When asked what his secret was to a long life, he said, "The Lord has more to do with my life than I may realize. I worship him. Other than that, I don't know why I have lived this long, but I feel good and enjoy my life."

VIA Public Media

PITTSTON – The Board of Directors of VIA Public Media, which operates WVIA, the PBS and NPR affiliate for Northeastern and North Central Pennsylvania, has announced that Carla McCabe is the organization's new President and CEO.

McCabe, who currently serves as Chief Operating Officer of KCPT in Kansas City, Mo., will take over leadership of VIA Public Media on July 13.

"Our five-month national search attracted an impressive array of candidates," said Peter Frieder, Vice Chair, who headed the search committee. "But our search committee and the entire board reached the conclusion that Carla, who has proven herself to be a rising star in public media, is the best person to lead WVIA into the future."

McCabe has extensive experience in public media and television production. Her areas of responsibility included overseeing the annual operating budget, serving as senior advisor to the President/CEO and managing all aspects of television, radio, digital, education and marketing.

"I am excited for this opportunity to join the talented team at VIA Public Media," said McCabe. "The need and importance of public media in our communities continues to grow, especially in light of recent events. I look forward to impacting the lives of our neighbors in this region by ensuring this service remains relevant and effective."



Carla McCabe

**When: Held immediately
before the 19th Annual
B&E Golf Tournament
Friday, August 21 @
Bucknell Golf Club**



Golf

Ball Drop!

Sponsor:  **service1st®**

Federal Credit Union | Friends you can bank on.



**Charles
Moscariello
won \$840!**

**Tickets/Info: Central PA Chamber of Commerce,
30 Lawton Lane, Milton
or www.centralpachamber.com**

CENTRAL PA
CHAMBER OF COMMERCE



Find the latest COVID-19 news and information @
www.centralpachamber.com/covid-19

Join Us at these Upcoming Events!

All events are tentatively scheduled and may change depending on the COVID-19 situation

Celebrating their new office! Refreshments provided!

Ribbon Cutting

Astro Village
LISTING SERVICE



2 p.m. Wednesday, July 8 @ 418 Main St. (Route 45), Montandon

CENTRAL PA

BUSINESS & EDUCATION ASSOCIATION

Seminar & Training Series

Webinar: How Money Works (3 Parts)
12 to 1 p.m. Saturday, July 11, 18, and 25 @
ZOOM Link to be sent the morning of the event
Cost: \$20 for Members/\$25 for Non-members
Register: www.centralpachamber.com/events

Presented by:



WEALTHWAVE™

BREAKFAST BRIEFING

7:30 to 9 a.m. Friday, July 24 @
the Central PA Chamber of Commerce,
30 Lawton Lane, Milton.

Free to Attend - **Registration is Required**

Sponsored by:



CENTRAL PA


CHAMBER OF COMMERCE

INSIDE JOBS

Featuring:

10 a.m. Tuesday, Aug. 4
@ former Santander location
109 Main St., Watsonstown

- Tour the available 7,200 s.f. building (approx. 1 hour)
- Coffee and donuts
- Coordinated by the Borough of Watsonstown



Located in downtown Watsonstown

Inside Jobs offers members a chance to tour facilities of fellow businesses/organizations.
Find tour details and register @ www.centralpachamber.com/events.



First Impressions matter. From the facade to the front door, reception area to the breakroom, your building should be a reflection of your business. Considering a renovation or new space? Our Design-Build team is ready to take on your next project.

We don't just construct buildings. WE BUILD BUSINESSES.

Building for the Future

COMMERCIAL | INDUSTRIAL | DESIGN-BUILD | CONSTRUCTION MANAGEMENT

www.trossbrothers.com | 570-524-6411





BEND-FAB
STANDING SEAM METAL ROOFING
A DIVISION OF T-ROSS BROTHERS CONSTRUCTION

Superior Quality. Unmatched Versatility. Rugged Durability.

www.bend-fab.com
570.522.0042

WHY YOU?

Why record a

WHY US?

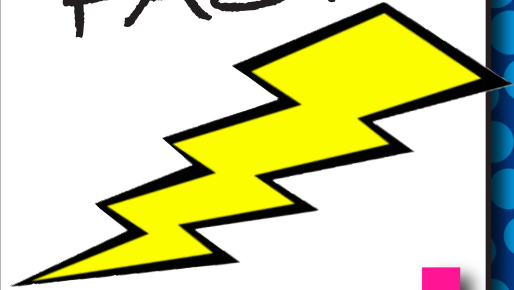
video
testimonial?

It's...

FREE!

It's...

FAST!



Be FEATURED on...

facebook

You Tube

centralpachamber.com



Get
NOTICED!

Be
HEARD!



(even as Chamber hold music)



So, WHY NOT record
a

WHY US?

video today?

Details:
centralpachamber.com/why-us

CENTRALPA
CHAMBER OF COMMERCE