

It's YOUR BUSINESS

www.centralpachamber.com

Volume 5, Issue 2 - February 2020

Will it be you?

pg. 3

Board reorganization, pg. 10



CENTRAL PA

CHAMBER OF COMMERCE

Board of Directors

Eric McDowell - Chairman

The Coup Agency

Lennea Brown - 2nd Vice Chair

RiverWoods Senior Living Community

Philip Campbell

Lackawanna College - Sunbury Center

Alison Hall

The UPS Store

Andrew Hertzler

XW Construction

Lauren McDonald

The Wealth Factory

Todd Ross

T-Ross Brothers Construction

Adam Wolfe

Pivot Physical Therapy

Ron Mackley - 1st Vice Chair

iHeartMedia - Williamsport/Shamokin

Cheryl Rheppard - Treasurer

USG

Beth George

Meadowbrook Christian School

Joel Harris

The Salvation Army - Milton

Rob Jones

Milton Public Library

Chris Pinchak

Heaven's Best Carpet Cleaning

Ellen Ruby

Lewisburg Downtown Partnership

E. Terry Baldwin - Solicitor

Baldwin & Baldwin

Staff

Tea Jay Aikey - President & CEO

tjaikey@centralpachamber.com

Jeff Shaffer - Communication Director

jshaffer@centralpachamber.com

Michael Porter - Education Coordinator

mporter@centralpachamber.com

Jessica Williams - Finance & Membership Director

jwilliams@centralpachamber.com



Ann Hilliard - RE/MAX Bridges

Coldwell Banker Penn One Real Estate ■ Davis, Davis & Kaar

Decal Dynasty ■ Evangelical Community Hospital

Green Ridge Graphics ■ Heritage Springs Memory Care

Hosterman Photography & Design ■ iHeartMedia

Interaction Dynamics Group ■ Jersey Shore State Bank

La Primavera Italiano Ristorante & Pizzeria ■ Lawton Insurance Agency

Lewisburg Pharmacy ■ LIVIC Civil ■ Mifflinburg Bank & Trust

Milton Savings Bank ■ North Central Sight Services

North Shore Railroad ■ On Fire Promotions

Paparazzi by Tracy ■ PenTeleData ■ PPL Electric Utilities

Practical Business Solutions ■ Riverwoods Senior Living Community

Safeguard Business Systems ■ Service 1st Federal Credit Union

Service Electric Cablevision/SECV8 ■ Seven Mountains Media

Stahl Sheaffer Engineering ■ Susquehanna Fire Equipment Company

Susquehanna Valley Limousine ■ T-Ross Brothers Construction

The Daily Item ■ The Standard-Journal

The Wealth Factory ■ Watsontown Dental

The President's Club is an exclusive sponsorship program created to prominently recognize companies that contribute to the Central PA Chamber over and above their annual membership investment. For more information, call 570-742-7341.

The Inside Scoop

There is a lot of excitement on the horizon! Our biggest event of the year is at the other end of the month, and as always, it is something that should be marked on your calendar.

For anyone who has attended our Annual Meeting, you know it is different from year-to-year. And, we're always looking for ways to make it even better!

We have help this year, since we're celebrating a special milestone of 115 years of service. Be prepared to see pictures from yesteryear, and perhaps, younger versions of yourselves on the big screen!

We're proud to say that so many of you have made a big and lasting impact on the Central PA Chamber of Commerce. This organization does not exist without the support of its members, people who offer up their time, talents and treasures. Often it's a combination of these things. For another year, we will honor a few individuals and/or businesses that have made an impact on their Central PA Chamber, as well as the greater community. It is very difficult for the Chamber staff to pick just four. If you were not selected this year, let it be motivation to have another great year! Your efforts do not go unrecognized, and your time will come.

As a staff, we simply love the fact that nothing about the award portion is rehearsed, beyond us going over our speeches. Outside of us and our awards maker, no one knows who will receive the award until the moment it is announced. So, will it be you? If it is, you better be ready!

There is much more to check out beyond our page 3 feature story, including the reorganization of the Chamber's board of directors (page 10) and who will be our guest speaker at the Legislative Breakfast also this month (page 11). If you're a part of an American business, you won't want to miss it.

We welcome several new members starting on page 4, and pull out a few current members to highlight on page 5.

The following few pages will remind you how busy our members are staying during the winter doldrums, and find out who has been celebrating with ribbon cuttings on page 14.

Enjoy the issue!



Jeff Shaffer, Editor
Communication Director

jshaffer@centralpachamber.com

It's Your Business Deadlines

March Issue

News/Ads Feb. 14 -- Insert Flyers Feb. 19

Interested in advertising in this publication?
Contact Jeff at jshaffer@centralpachamber.com or
call 570-742-7341

Find FREE copies of *It's Your Business* at these
Chamber member locations:

Lewisburg

Country Cupboard ■ Lewisburg Borough ■ Lewisburg Hotel
Lewisburg Pharmacy ■ McCann School of Business & Technology

Mifflinburg

A+ Office Outlet

Milton

Central Vision Eyecare ■ D & S Event Center
Milton Public Library ■ Pinpoint Federal Credit Union

Watsontown

Watson Inn ■ Watsontown Dental, PC

Sunbury

Sunbury Revitalization ■ The Dip-In

Will it be you?

MILTON - At the end of this month, four Central PA Chamber members will be recognized for the positive impact they have made on the Central PA Chamber and community. Will you be one of them?

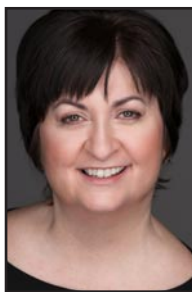
Who receives the award each year is a well guarded secret, so you better make sure that you are registered for the Annual Meeting on Feb. 27, just in case you've been tapped for this year!

As you can imagine, numerous members are making tremendous impacts. It's never easy for the Chamber staff as they make nominations individually and then narrow down the list to a final four recipients. Both individuals and entire businesses/organizations have been recognized in the past. This is the seventh year the Central PA Chamber will be presenting the award.

It all happens during the Annual Meeting, from 11:30 a.m. to 1:30 p.m. Thursday, Feb. 27 at the Silver Moon Banquet Hall, Lewisburg.

Once again this year, it will be a buffet-style meal featuring several food stations by Feast of Flavor Catering. The Meal/Venue Sponsor is Service 1st Federal Credit Union. The Keynote Speaker is fellow Chamber member Diane Weller, founder & principal of Diane Weller Coaching. In addition, we'll be celebrating the 115th Anniversary of the Central PA Chamber, which officially happens on May 19. There will be a commemorative keepsake for everyone who attends.

Register for the Annual Meeting now at www.centralpachamber.com/events.



Diane Weller



The 2019 recipients of the Chamber Impact Award. From left: Brad Lawton, Lawton Insurance Agency; Tracy Boyer, Safeguard Business Systems; Brett Hosterman, Hosterman Photography & Design; and Kevin Mertz, The Standard Journal.



Pictured is your 2020 Central PA Chamber of Commerce Board of Directors. They met in January for a mini-retreat and reorganizational meeting where new officers were elected. See who was named to the Executive Committee on page 10. In front, from left, are: Joel Harris, The Salvation Army - Milton; Ellen Ruby, Lewisburg Downtown Partnership; Lennea Brown, RiverWoods Senior Living Community; Lauren McDonald, The Wealth Factory; Adam Wolfe, Pivot Physical Therapy; Beth George, Meadowbrook Christian School; Rob Jones, Milton Public Library. Back: Andrew Hertzler, XW Construction; Chris Pinchak, Heaven's Best Carpet Cleaning; Eric McDowell, The Coup Agency; Cheryl Rheppard, USG; Ron Mackley, iHeartMedia - Williamsport/Shamokin; Philip Campbell, Lackawanna College - Sunbury Center; Alison Hall, The UPS Store. Missing from the photo: Todd Ross, T-Ross Brothers Construction.



Quality Collision Repairs on
All Domestic & Foreign Cars & Trucks
Alignment Specialists • State Inspection
Towing & Rollback Service

47 Apple Street • Milton, PA 17847
Phone: (570) 742-9627

Davis, Davis & Kaar

Attorneys at Law

*Wills & Estate Planning * Real Estate*
*Family Law * Business Law * Personal Injuries *

37 N. Arch Street, Milton, PA
P.O. Box 319

Phone: 570-742-8777 Fax: 570-742-6155

New Members

Designer Homes of PA
 279 North 8th Street
 Mifflinburg, PA 17844
 570-966-6244
alicem@ritz-craft.com
Alice Meeth - Sales
www.designerhomesofpa.com

Designer Homes is a builder of Ritz-Craft modular homes, which we sell to retail customers. We sell the entire package of the home, including: the preparation of the build site, transport of that home to the customer's site, the building process, the interior and exterior finish and, upon completion, we hand the customer the keys to their brand new custom modular home.

Dwell Orphan Care
 1157 Market Street
 Williamsport, PA 17701
 814-330-6804
dwellorphancares@gmail.com
Jennifer Lake - Executive Director
www.dwellorphancares.org

We exist to support foster and adoptive families in Lycoming County, PA and beyond, so that children have a safe, loving, forever home in which to dwell. Our mailing address is: 117 Lincoln Avenue, Williamsport, PA 17701.

Jeremiah K. Smith
 P.O. Box 484
 Lewisburg, PA 17837
 717-710-6088
JeremiahSmith@appreciationfinancial.com
Jeremiah K. Smith - Retirement Account/Life Insurance Specialist
www.linkedin.com/in/jeremiah-k-smith-8a44a782/
Our mission is to help our clients and their families achieve peace of mind and financial prosperity. Our philosophy is to provide each client with the best products available at the most competitive rates. We represent the top regional and national companies for: Life Insurance, Retirement Plans, Fixed Indexed Annuities, Fixed Annuities, Mortgage Protection, and Final Expense.

Welch Performance Consulting
 16 Kile Drive
 Bloomsburg, PA 17815
 814-574-7082
tina.welch@welchperformanceconsulting.com
Tina Welch - Founder
www.welchperformanceconsulting.com
WPC HR helps make great workplaces! We provide human resources, consulting, organization development assessments, management consulting, leadership development and training services to small and mid-sized businesses throughout Central PA, helping them create great workplaces!

Herring, Roll & Solomon P.C. - Danville
 700 Bloom Road, Suite 101
 Danville, PA 17821
 570-286-5895
csolomon@ptd.net
Courtney Solomon - CPA
www.herringandroll.com

Herring, Roll & Solomon was founded Nov. 1, 1980 when Randy Herring and Bill Roll formed an accounting partnership. Prior to that, they had worked for a small CPA firm in Lewisburg, PA. Bill and Randy located a former residence at 41 South Fifth Street in Sunbury and converted the residence into an office. The pair of them started slowly until they hired a part-time employee in 1983. The firms core services consist of tax accounting and auditing services, primarily in a five-county area. In January 2010, the firm brought Courtney Solomon in as an owner. In addition to the three CPAs, the firm employs two additional accounting staff, a paraprofessional and an administrative assistant.

Citizens & Northern Bank - Muncy
 3461 State Route 405 Hwy
 Muncy, PA 17756
 570-546-2753
lindag@cnbankpa.com
Linda Gordner - Regional Mortgage Loan Officer
www.cnbankpa.com

A community bank serving NY and PA, ten counties and surrounding areas. Chemung and Steuben (NY), Cameron, Bradford, Bucks, Lycoming, McKean, Potter, Sullivan and Tioga.

See "New Members" & "Member Renewals" (on page 8)

ThermoFisher SCIENTIFIC



Consider a career with us

Our mission is to enable our customers to make the world **healthier, cleaner and safer**. We help our customers accelerate life sciences research, improve patient diagnostics, and deliver medicines to market.

Starting wage now \$15/hour!

Search for Millersburg, PA at jobs.thermofisher.com

163 Research Lane Millersburg, PA 17061 (717) 692-2104

Directory Corrections

Oops! There were a couple of misprints in the 2020 Chamber Directory. We apologize for the errors! Please, cut out the listings below and add them to your copy of the directory.

Lewisburg Sunset Rotary Club
 PO Box 371
 Lewisburg, PA 17837
 570-490-0261
www.sunsetrotary.com

Heritage Printing & Design, LLC
 229 East Chestnut Street
 Mifflinburg, PA 17844
 570-966-1120
 F: 570-966-1130
www.heritageprinter.com



Erin Threet, P.E./Assistant Vice President

ethreet@hrg-inc.com

(570) 524-6744

www.hrg-inc.com

What makes your business unique?

Our team and their commitment! Everyone is a true team player focused on shared success – for HRG, for our clients, and for their communities. Whatever someone needs, they are willing to help.

What is your Mission Statement?

HRG strives to be a full-service partner with our clients to create premier communities. We help them plan, design, fund, and build the infrastructure they need to support great living spaces, economic growth, and happiness. This includes roads, bridges, parks, water and wastewater

treatment systems, homes, schools, and businesses of every shape and size.

How many does your business employ?

Our Lewisburg office has 12 team members, but we have 248 employee-owners across our organization that are available to support local projects.

Finish this sentence – “On a day off I...”

“... typically spend time with my family and friends.”

Words to live by?

Always be genuine and work hard, the rest will generally fall into place.

What characteristics do you look for in employees?

Skills are important, but they can be taught. We look for people who are hard-working, great at collaboration, committed to service and community development, forward-thinking, creative, and striving for excellence and growth.

What philanthropic causes does your business support?

HRG has donated more than \$275,000 to the United Way over the past 20 years, and we sponsor a variety of community events. Locally, we also participate in PennDOT's Adopt A Highway program.

Alana Jajko, Director of Communications and Outreach

info@susquehannagreenway.org

(570) 478-0178

www.susquehannagreenway.org

What makes your organization unique?

The Susquehanna Greenway Partnership is a network of public and private partnerships from across the state who are dedicated to fulfilling the vision of a connected Susquehanna Greenway on a local and regional scale.

Our vision is to create a Greenway that builds connections along the Susquehanna River, inspires people to engage with the outdoors, and transforms communities into places where people want to live, work, and explore. Once complete, the Susquehanna Greenway will be the largest Greenway in Pennsylvania allowing residents and visitors to walk, bike, or paddle from town to town.

How do you market your business?

Facilitating connections is at the center of our

work. Our staff works to connect people to the Susquehanna Greenway in a variety of ways, including print and online media, social media campaigns, and in-person/community outreach. SGP and our network of volunteers attend community events throughout the year, as well as host our own sponsored events to help residents and visitors discover the Greenway in their region. Perhaps one of our most far-reaching initiatives is our annual photo contest, which provides a unique way for people to connect with the Greenway through a camera lens. The winners are then showcased in locations across the Greenway in a traveling gallery each year, which provides a touchpoint for our vast geography.



What is your Mission Statement?

Our mission is to grow the Greenway by connecting communities, promoting active healthy living, and facilitating collaborative partnerships along the Susquehanna River.

Words to live by?

“Everyone must believe in something. I believe I’ll go canoeing.” - Henry David Thoreau

What are the top 3 company priorities you focus on?

SGP has three main program areas: Trails, Education & Outreach, and River Towns.



A QUALITY SERVICE
email: decallady@windstream.net

www.decaldynasty.net

17355 Old Turnpike Road (Route 45)
Millmont, PA 17845

Decal Application and Removal
Fleet & Truck Markings . Custom Striping
Labels . Magnetic Signs . Contractor Job Site Signs
Posters . Window & Wall Graphics . Building Letters & Labels



www.BHSHodrickRealty.com

BERKSHIRE HATHAWAY | Hodrick Realty
HomeServices

1100 West Market Street
Lewisburg, PA 17837
570-523-1000

1070 Bloom Road
Danville, PA 17821
570-275-7696

What's Happening

**Saturday
February 8, 2020**

11th Annual



Main Event Sponsor



Co-Host



5K Walk/Run Race Start at the Historic Campus Theater
413 Market Street, Lewisburg

Registration Opens 8 AM

Race Start 9:30 AM

Commemorative Frosty 5K Clothing Item available for purchase

Benefiting: *Girls on the Run *Local Community Projects *Bucknell University BACES: Students to Dominican Republic providing community assistance, service projects, medical outreach & more!

Pre Register & Save: www.active.com/orgs/lewisburg-sunset-rotary

Susquehanna Human Resource Management Association

Upcoming Meeting

RSVPs are required

**Feb. 18 - How Can HR Support Continuous
Improvement (CI) Efforts In Organizations**

SHRMA Members - \$11

Non-members and Guests - \$17

Includes breakfast buffet

Networking & Breakfast at 7:30 a.m. and Meeting is from
7:50 to 9 a.m.

**Meetings are held on the 3rd Tuesday of the month at the Country
Cupboard, Lewisburg, and are for Human Resources
Professionals. Register @ <https://shrma.shrm.org/events>.
Learn more @ <https://shrma.shrm.org>.**

Find the latest Seminar & Training
class information @
www.centralpachamber.com/events

BVRA 6TH ANNUAL GALA

Flannel & Frost

BVRA 6TH ANNUAL GALA
FEBRUARY 8, 2020, 6-10PM
THE CELLARS AT BROOKPARK

WWW.BVREC.ORG 570.524.4774

SAVE THE DATE!

Leadercast  live

**2020 POSITIVE
DISRUPTION**

Thursday, May 7
@ Bucknell University

Registration & Sponsorship Opportunities
@ www.centralpachamber.com/events



**18th Annual Milton
Rotary Club
Casino Night**



Saturday, March 28, 2020
Watson Inn, 100 Main Street,
Watsonstown
7 - 11 PM

Tickets: \$15 in advance / \$20 at the door
Includes: 100,000 crazy cash, appetizers and one door
prize ticket



**All proceeds benefit the Milton Rotary Club and
the Ronald McDonald House of Danville**



**American
Red Cross**

The need is constant.
The gratification is instant.
Give blood.™

redcrossblood.org | 1-800-RED CROSS

Blood Drive Central PA Chamber of Commerce

Smith Room – 30 Lawton Lane - Milton

March 6th, 2020

10:00 AM – 3:00 PM

Call 1-800-Red Cross (1-800-733-2767) or visit redcrossblood.org and enter:
PACHAMBER to schedule an appointment

© 2010 The American National Red Cross, Mid-America #0215 Oct. 2010

**For the latest information on upcoming events...
Visit us on Facebook!**



Date	Seminar	Location	Time	Cost
2/5/20	Opportunities for PA Exporters in Australian Market - Taking Your Business Down Under	Webinar	3 to 4 p.m.	Free
3/18/20	Lean Manufacturing Level One Certification	Center for Business & Workforce Development 1127 W. 4th St., Williamsport	8 a.m. to 4:30 p.m.	\$1,495
3/18/20	Lean Manufacturing Level One Certification	TBD, State College	8:30 a.m. to 5 p.m.	\$1,495



Lauri Moon
Manager, Training &
Outreach
570-329-3200 ext 8085
www.imcpa.com/events



**Small Business
Development Center
Bucknell University**
570-577-1249
www.bucknell.edu/sbdc

Date	Seminar/Event	Location	Time	Cost
2/18/20	Sales & Marketing: The Bread & Butter of Your Business	416 Market St., 3rd Floor, Lewisburg	11:30 a.m. to 1 p.m.	\$15
2/20/20	The First Step Pre-Business Workshop	416 Market St., 3rd Floor, Lewisburg	1 to 3 p.m.	Free
2/26/20	How to Set Up a Facebook Business Page	416 Market St., Lewisburg	10 a.m. to 12 p.m.	\$35

"New Members" (from page 4)**Staiman Recycling Corporation****201 Hepburn Street****Williamsport, PA 17701****570-323-9494****pmcginn@staimanrecycling.com****Paul McGinn - Marketing Coordinator****www.staimanrecycling.com**

Kalman and Jacob Staiman, immigrant brothers, settled in Elmira, NY. Two years later, they relocated to Williamsport, PA and recognizing the need for recycling in their new home, founded Staiman Brothers. In the beginning, the company specialized in the processing of ferrous and non-ferrous materials and wastepaper. Four generations of Staimans (the current company president is the great-grandson of Kalman) and 114 years later, this prominent recycling company is still privately held and continues to evolve. The company's current headquarters were built after a fire in 1955 destroyed the original Center Street offices. As the need for recycling has grown, so have the Staiman businesses. In 1996, Staiman Recycling Corporation was formed and in 2013 Staiman Recycling, NY was added. Today, Staiman Recycling Corporation serves the needs of the ferrous and non-ferrous recycling and process industry. Staiman Brothers, Inc. continues to serve the paper and, most recently, the Staiman Recycling NY Inc. services recyclers in New York State. Over the past century, Staiman has consistently supplied customers with quality material by processing thousands of tons of ferrous and non-ferrous metals and wastepaper each year. As in the early years, Staiman relies on a dedicated workforce to meet company goals and standards. However, modern technology is required to keep up with the demands of today's fast-paced world. Staiman utilizes various types of equipment to make quick work of what used to be a time consuming and manual labor-intensive process. Our privately-owned commercial fleet of trucks assures that pick-ups and deliveries are made in a timely manner to ensure the flow of product. From there, cranes, front-end loaders, forklifts, Bobcats/skid steers easily move materials throughout the yard to processing stations. Metal and paper materials are baled and loaded into containers quickly and efficiently. Most impressive are the shears. With two hydraulic guillotine shears, 500-ton and 1,000-ton stationed in the yard and a 1,300-ton mobile Genesis shear, steel is processed quickly for shipments to our consumers throughout the eastern United States, Canada and overseas. Our locations are in Williamsport and Hanover, PA and Elmira, NY, but our reach extends up and down the east coast and continues to expand westward. Our versatile logistics system utilizes trucks, containers, and railcars to ship by land and sea. In addition to our recycling and processing centers, we partner with business and industrial scrap generating facilities by providing reliable, cost effective recycling services. We deliver individualized scrap management programs that conserve resources and optimize recycling programs. Our brokerage division utilizes up-to-the-minute pricing, industry knowledge and our versatile logistics system to provide buyers and sellers prompt service and optimal transaction value.

Senior Helpers**39 North Fourth Street****Sunbury, PA 17801****570-495-4047****bobbi@seniorhelpers.com****Bobbi Emanuel - Owner****www.seniorhelpers.com**

Senior Helpers provides non-medical in home care to people 18 years of age and older. Our goal is to provide safety and continuum of care so that our Seniors can age in place.



Don't worry we've done this a million times



633 N. Derr Dr.
Lewisburg, PA 17837
570-768-4792



166 Eighth St.
Northumberland, PA 17857
570-473-8888

Membership Renewals

(As of Jan. 21, 2020)

Berkshire Hathaway
Homeservices
- Hodrick Realty
Borough of Milton
Brynwood Rentals - 535, Inc.
Country Comfort Alternative
Living, Inc.
Davis, Davis & Kaar
Evangelical Community
Hospital
Fairchild Brothers, Inc.
First Commonwealth Bank
- Lewisburg Downtown
First Commonwealth Bank
- Lewisburg Weis
First Commonwealth Bank
- Milton
First Community Foundation
Partnership of Pennsylvania
First National Bank
- Lewisburg
First National Bank
- Watsontown
Great Hair Day
Herring, Roll & Solomon P.C.
- Sunbury
John Yingling
Joseph S. Kowalski
La Primavera
Italiano Ristorante
Larson Design, Inc.
- Selinsgrove
Larson Design, Inc.
- Williamsport
Matt Frye - State Farm
Insurance

Milton Regional
Sewer Authority
Milton Savings Bank
Milton Steel Company
Milton Transportation, Inc.
Nailed it Business Services
Nu-Tec Tooling Co., Inc.
Pennsylvania Chamber
Insurance
PPL Electric Utilities
Robinwood Day Care
Center, Inc.
Shade Mountain Winery
- Danville
Shade Mountain Winery
- Middleburg
Susquehanna Community
Bank - Beaver Springs
Susquehanna Community
Bank - Lewisburg
Susquehanna Community
Bank - Mifflinburg
Susquehanna Community
Bank - Northumberland
Susquehanna Community
Bank - Watsontown
Susquehanna Community
Bank - West Milton
T-Ross Brothers
Construction, Inc.
The Miller Center for
Recreation and Wellness
Union County Housing
Authority
Warrior Run School District
Weichert Realtors Premier
WorkForce Temps - Milton
WorkForce Temps - Sunbury

Looking to hire or even be hired?

**JOB
OPENINGS**

Visit

www.centralpachamber.com

and click on

**"Job Opportunities" under the
"Economic Development" tab.**



PennState Extension

You're invited to attend:

ServSafe®



The **ServSafe®** Food Safety Program is for individuals who are serving as managers or are in a supervisory role requiring certification. Upon successful completion, participants will receive the **ServSafe®** Food Protection Manager Certificate.

We hope you can join us!

When

Mon., Mar. 16, 2020 (9:00 AM - 4:00 PM)

Mon., Mar. 23, 2020 (9:00 AM - 11:30 AM)*

*Exam to begin at 12:30 PM.

Where

Penn State Extension Northumberland County
443 Plum Creek Rd., Sunbury, Pennsylvania, 17801

Register here:

<https://extension.psu.edu/servsafe>

Registration Deadline: Monday, March 9, 2020

Roadway safety classes

LEWISBURG - Coming off of a successful year for the Local Technical Assistance Program, SEDA-Council of Governments (SEDA-COG) has announced several upcoming roadway safety and maintenance training courses.

The courses are through a joint effort with PennDOT. More than 220 people benefited from the courses in 2019.

LTAP classes currently scheduled for early 2020 include:

Work Zone (Temporary) Traffic Control

8 a.m. to 12 p.m. March 3 at State College Borough Maintenance Garage, 330 S. Osmond St., State College AND 8 a.m. to 12 p.m. April 9 at Patton Township Building, 100 Patton Plaza, State College.

Asphalt Roads

8 a.m. to 12 p.m. March 10 at Ferguson Township Building, 3147 Research Drive, State College.

Liquid Bituminous Seal Coat

8 a.m. to 12 p.m. March 11 at Boggs Township Community Building, 1290 Runville Road, Bellefonte.

For more information, contact Steve Herman: 570-524-4491 or sherman@sed-cog.org.



Martha Barrick, Principal of Coldwell Banker Penn One Real Estate, Lewisburg, hosted the annual holiday appreciation party in December, their largest fundraiser. She was able to present funds to the Eastern Union County Supplemental Food Program and 40 additional non-profit organizations as a result of contributions of friends of Coldwell Banker. From left, are: Coldwell Banker's Linda Treese; Mark J. O'Brien; Barrick; Cindy Farmer of the food bank; Jodie Bryant; Barbara Diehl; and Doug Wertz. December was a busy month for agents and staff at Coldwell Banker. Throughout the fall months, they collected toys to support the food bank's toy drive to assure that every child gets a toy for Christmas. To further support the bank and toy drive, they offered hot chocolate during Lewisburg's Late Night Shopper program, gratefully accepting donations and held a staff luncheon where the staff and agents bring toys that are then donated. Members of CBPO help prepare for the distribution the day prior and the day of gifting toys and books. The goal is to provide each child two toys and a couple of books. In addition, they sponsored the free holiday movie at the Campus Theatre with their own Alan Barrick, as the elf assisting Mr. and Mrs. Santa Claus and collecting canned goods for the food bank.

**Smart & Creative
for over 35 years!**

The professional team at AdOne Advertising & Design has been providing our customers with creative solutions and award-winning designs for over 35 years. Let us help you find the perfect way to promote your company with competitive pricing and fast turn times.

AdOne
advertising & design



570-286-1111
mypromotionalneeds.com



Time with Tea Jay

Ask yourself, 'Why Us?'

We're already in February! By the end of this month, we will have announced, honored and surprised the four Chamber Impact Award recipients for 2020. They have already been selected by the time you read this.

The Chamber Impact Award selection process literally takes months as the love we have for our members and the love our members have for one another and the region is absolutely incredible.

A few years ago, we had an "I Love My Chamber" marketing campaign. This past summer, we kicked off a "Why Us?" marketing campaign. The initiative was to have members recognize and share why they are members of the Central PA Chamber of Commerce. It is a 15-second video of the member(s) introducing themselves, their business/organization and then why they choose to be a part of the Central PA Chamber of Commerce.

The "Why Us?" portion is different for each submission, and it's remarkable to hear the many differences as to why businesses/organizations choose to be a part of the Central PA Chamber.

We feature the "Why Us?" videos each Wednesday on YouTube and Facebook (#whyuswednesday). The audio from those same videos are then shared with iHeartMedia - Williamsport/Shamokin and Seven Mountains Media and broadcast over their radio stations. And, it doesn't stop there! We are in talks with getting the videos featured on local TV, too. All videos can also be easily found on our web site at www.centralpachamber.com/why-us/.

So, do me a favor and think about it. Why is your business/organization a member of the Central PA Chamber of Commerce? Now think about this - When was the last time you received free marketing? That is what I thought. So, have you submitted your "Why Us" video yet? Let me guess, you don't believe you have the adequate equipment to record your video. Do you have a smartphone with a video camera? If so, that is all you need to get started! Do you think you aren't able to record your own video? That's no problem either! Just reach out to our Communication Director Jeff Shaffer, and he would be happy to setup a time to record your video at our location or possibly yours.

I am just so in awe of the responses we've received in the "Why Us?" videos. I typically do not see or hear the content until they are released on a "Why Us?" Wednesday. I've had some that made me laugh, some that really made me smile and even one that made me cry. I encourage you, take the time and see what others have recorded already.

I am honored that you allow my team and I to serve your business/organization, and I look forward to seeing your "Why Us?" video soon!

Tea Jay Aikey
President & CEO

tjaikey@centralpachamber.com



Board reorganization

MILTON - New officers were elected at the Central PA Chamber's Board of Directors meeting in January.

The new year welcomed new members to the board, and it was time for reorganization.

Elected as Chairman was Eric McDowell of The Coup Agency, who was recently served as 1st Vice Chair. Joining the Executive Committee for the first time were Ron Mackley of iHeartMedia - Williamsport/Shamokin as 1st Vice Chair, and Leanna Brown of RiverWoods Senior Living Community was named 2nd Vice Chair.

Cheryl Rheppard remains board treasurer for another year. In other news, Lauren McDonald of The Wealth Factory was appointed to the board to fill the unexpired term of Diane Elliott, who resigned shortly after she was elected by the membership this past fall. Elliott, who was working for First National Bank, accepted a new job position with Northumberland National Bank and was unable to fulfill the responsibilities of a board member.



Eric McDowell



Ron Mackley



Lennea Brown



Cheryl Rheppard



Lauren McDonald

WELCOME TO YOUR LOCAL SOURCE FOR BANKING

We know local markets, we make local decisions,
and we'll find an account that works for you.

milton
SAVINGS BANK

Member FDIC



CHECKING, SAVINGS & LENDING SOLUTIONS

CALL 570-742-8541 OR VISIT US TO GET STARTED

80 BROADWAY STREET | MILTON, PA 17847 | WWW.MILTONSAVINGSBANK.COM

800-822-2105

2122 Main Street
PO Box 208
Dewart, PA 17730

COSTARS

Susquehanna Fire Equipment Co.

Sales & Service

- Fire Extinguishers
- Emergency Lighting
- Backflow Water Testing
- Automatic Fire Suppression Systems
- Training Classes
- AED
- Rescue Equipment
- Portable Gas Detection
- Fire Equipment
- Breathing Air Compressors
- SCBA
- Fixed Gas Detection Systems



Legislative Breakfast speaker announced

LEWISBURG - Chamber members wanting to keep up on the latest federal news concerning business will want to attend the Joint Legislative Breakfast slated for later this month.

Ryan Gleason, Manager of Congressional and Public Affairs at the U.S. Chamber of Commerce's Great Lakes Regional Office, will be the guest speaker on Friday, Feb. 21 at the Country Cupboard in Lewisburg.

Gleason's speech is themed, "The State of American Business and Where We Are Going."

He will review the last legislative session in 2019, the current state of American business, legislation in the upcoming session (e.g. infrastructure, immigration, climate change, drug pricing, higher education and government spending) and the political landscape in 2020. Some topics could be limited or excluded based on time.

The Joint Legislative Breakfast is being sponsored by Milton Savings Bank. Guests are invited to take part in a breakfast buffet, starting at 7 a.m., with the speaking portion starting at 8. The cost is \$15 and you can register at www.centralpachamber.com/events.

To achieve the U.S. Chamber's public policy goals, Gleason cultivates and maintains legislative, political, media and grassroots resources throughout Illinois, Indiana, Kentucky, Michigan, Ohio, and Pennsylvania.

He helps lead the U.S. Chamber's efforts to strengthen its relationships with Members of Congress through member businesses, associations, and local and state chambers of commerce across the region.

Before joining the U.S. Chamber in October 2019, Gleason spent five years working in Washington, D.C. He first started working in federal affairs for Illinois Governor Bruce Rauner and representing Illinois at the federal level. Most recently, Ryan worked at a government affairs firm advising clients on financial services, taxation, and tech issues. He originally got his start working in the Illinois House of Representatives.

Meanwhile, Gleason has worked on a number of local, state, and federal campaigns, including two successful gubernatorial campaigns in Illinois and Missouri in 2014 and 2016, respectively. Ryan is a graduate from the University of Illinois at Urbana-Champaign, double-majoring in Economics and Political Science. Aside from his time in Washington, D.C., he has been a lifelong resident of Illinois and currently resides in Chicago.



Ryan Gleason, Manager of Congressional and Public Affairs at the U.S. Chamber's Great Lakes Regional Office, will be the guest speaker at the Joint Legislative Breakfast on Friday, Feb. 21 at the Country Cupboard.



SEDA-COG Joint Rail Authority (JRA), owner of six short line railroads in Central Pennsylvania is investing \$3,750 for 2020 to support efforts of Focus Central Pennsylvania to promote the region to attract new corporate investment and jobs. Pictured in the check presentation are, from left: John Showers, SEDA-COG JRA Chairman; Lauren Bryson, Focus Executive Director; Jennifer Wakeman, Focus Vice Chair; and Jeff Stover, SEDA-COG JRA Board Member.

WHY US?

What our members are saying...

"PROMOTES REGION"

"VALUE FOR MONEY"

CENTRALPA
CHAMBER OF COMMERCE

*Based on 2018 member survey findings

LIVE

HIGH SCHOOL SPORTS AND MORE

High School Sports and More Exclusively on
Service Electric Cablevision Channel 508 HD or 8 SD.

SECV8

Check secv8.com for a complete schedule!

Members Recognized

SEDA-Council of Governments (SEDA-COG)

LEWISBURG - The SEDA-COG board of directors recently voted to hire the new executive director John A. Brown.

Brown was the founder/CEO of John Brown Leadership Solutions LLC and previously held the elected position of Northampton County Executive, where he managed a \$400 million budget and 2,200 employees. Prior, he served as the mayor for the Borough of Bangor.

Brown will begin transitioning into his new role, under the direction of current executive director Bill Seigel. Brown will serve as sequent executive director until Seigel retires on March 13.

Seigel has worked at SEDA-COG for 39 years.

"I am excited about the future of SEDA-COG under John's leadership. He is an achievement-oriented manager with extensive experience in both large and small municipal governments as well as the private sector," Seigel said.

Brown has a vast background in management, finance, and an ability to develop high-performance organizations. He has been recognized for successfully leading initiatives that foster multi-municipal and public-private cooperation.

"I look forward to working with the talented staff at SEDA-COG and building and forging new relationships with counties, federal, state and local officials, local businesses and residents, to improve our 11-county region," Brown said.

SEDA-COG is a community and economic development agency in Lewisburg and is one of seven Local Development Districts in Pennsylvania. SEDA-COG enhances the quality of life and economic advantage for residents and businesses in 11 central Pennsylvania counties through its vital partnerships and initiatives.

Herbert, Rowland & Grubic (HRG)

LEWISBURG - Nichole Mendinsky of Hebert, Rowland & Grubic (HRG) has become a member of the American Institute of Certified Planners. This organization is the only nationwide association to verify planners' qualifications. In order to be recognized as an AICP, planners must meet education and experience requirements and pass a rigorous exam.

Mendinsky has 12 years of experience planning and designing community spaces such as parks and recreation facilities, plazas, courtyard, and institutional campuses. She is passionate about bringing people from diverse backgrounds together to support a common vision for the betterment of a community, and she is particularly skilled at public engagement, facilitation, sustainable design, and revitalization initiatives.

Mendinsky is also passionate about continually expanding her skillset to provide the best possible service to her clients.

In addition to her membership in the American Institute of Certified Planners, she is a registered landscape architect, certified parks and recreation professional, and LEED accredited professional.

HRG's Assistant Vice President Erin Threet said, "Nikki's work ethic and commitment to planning and design are unsurpassed. She fully embodies HRG's dedication to the highest levels of professionalism, and we are glad to have her on our team to support our clients."

In addition, Mendinsky has been promoted to practice area leader of the land development service group at HRG. She will be responsible for the group's vision and strategy, staff development, project delivery, client management, and sales.

One of her primary tasks will be increasing the firm's presence in the community revitalization and institutional development markets, with a specific emphasis on the higher education, healthcare and senior living



John A. Brown



Nichole Mendinsky

sectors.

"HRG works to make the places we live feel like home by enhancing safety, promoting health and wellness, connecting people and places, and promoting strong economies," said President Jason Fralick. "Community and institutional development are natural extensions of the work we've been doing for more than 50 years, and Nichole is the perfect person to grow our presence in these markets. She has a passion for community and a unique blend of skills in planning, site design and landscape architecture."

Coldwell Banker Penn One Real Estate

LEWISBURG - Martha Barrick, broker/owner of Coldwell Banker Penn One Real Estate, has announced the office's monthly awards for the month of December.

The awards for most sales and listings for December went to Doug Wertz.

"Doug is the perfect example of the dedication we have here at Coldwell Banker Penn One. He makes the most of your home buying or selling experience," Barrick said.



Doug Wertz

Evangelical Community Hospital

LEWISBURG - Daphyne Ressler, was named Director of Medical Ambulatory Surgery and Endoscopy at Evangelical Community Hospital. She began her duties in December.

In this role, Ressler is responsible for the overall operations, leadership, planning, direction and management of the Ambulatory Surgical Center and Evangelical Community Hospital's Endoscopy Center.

Ressler received her diploma in nursing from Geisinger School of Nursing in conjunction with Penn State University and went on to receive her Bachelor of Science in Nursing Degree from Chamberlain University in conjunction with DeVry University. She is currently enrolled and pursuing her Master of Science Nursing Degree, Nurse Executive Leadership track, from Chamberlain University with graduation slated for this month. She is a Construction Infection Control Training Institute Certified Healthcare Manager (CCHM) with special training in all levels of management geared to optimal infection prevention and reducing infection risk.

A member of the Evangelical family of employees since 1997, Ressler brings with her over 20 years of clinical nurse experience and three years of management experience to the new role. Prior to her promotion, she served as the Evangelical Ambulatory Surgical Center Nursing Surgical Services Manager.

In other news, Evangelical has welcomed several advanced practitioners to its family of services.

Advanced practitioners are a group of medical professionals that include physician assistants and advanced practice registered nurses, who have higher levels of training and certifications, allowing them to care for patients in a variety of care settings.

Advanced practitioners joining or moving within the Evangelical family of practices are:

- Jonathan Bastian, Certified Physician Assistant—Palliative Medicine of Evangelical, who started last month
- Mara Carpenter, Certified Registered Nurse Anesthetist—Anesthesiology of Evangelical, who started in December
- Linda Hunter, Certified Physician Assistant—Urgent Care of Evangelical, who started last month
- Myrle Newcomer, Certified Physician Assistant—Evangelical Community Hospital Emergency Group, who started in September



Daphyne Ressler

- Heather Pyle, Certified Physician Assistant—Urgent Care of Evangelical, who started last month
 - Jillian Rogers, Certified Physician Assistant—Family Medicine of Evangelical – Lewisburg, who started in September
 - Laurie Treaster, Certified Physician Assistant—Urgent Care of Evangelical, who started in December
 - Brittany Tremblay, Certified Registered Nurse Practitioner – Endocrinology of Evangelical, who started last month
- And, Evangelical Regional Mobile Medical Services (ERMMS) last year received the Pennsylvania CARES Award.

The award acknowledges the agency's dedication to collecting out-of-hospital cardiac arrest (OHCA) data for quality improvement purposes. ERMMS is one of 145 EMS agencies across the Commonwealth honored by Pennsylvania CARES.

Each year, more than 350,000 people in the United States experience an out-of-hospital cardiac arrest. By participating in Pennsylvania CARES, Evangelical through ERMMS demonstrates commitment to saving lives by strengthening the links in the OHCA chain of survival. Pennsylvania CARES is a statewide partner of the Cardiac Arrest Registry to Enhance Survival (CARES), a national cardiac arrest registry that allows communities to measure bystander and 911 response, including information about bystander CPR and AED application, telephone CPR, and EMS response. Using this information, EMS agencies can discover promising practices and implement new programs to improve emergency care for patients in their communities, and participation in a national registry is recommended by the Institute of Medicine. "We are proud to be named as a recipient of the Pennsylvania CARES Award," said Nick Klose, Clinical Director of ERMMS. "As emergency responders, we have the unique opportunity to bring medical care to patients outside of the hospital setting. It is a priority for us, to not only provide excellent care, but to also capture and report data that can assist all Pennsylvania hospitals and their emergency response personnel in creating better response systems focused on the patient that can ultimately aid in increasing survival."



At 5:09 a.m. on Jan. 1, WKOK 1070 AM's News Director, Matt Catrillo, and his wife, Lisa, of Northumberland, made the news instead of reporting it. The couple's first child, Luke Joseph Catrillo, received the honor of being the first baby of 2020 born at Evangelical Community Hospital, Lewisburg. The couple chose to not know the gender before his arrival and delivered Luke naturally after 11 hours of labor. Born at Evangelical's The Family Place, Luke weighed in at 5 pounds, 11 ounces, and was 18 inches long. Originally due on Jan. 18, Luke decided to arrive early, and was delivered by Angela Cassel, Certified Nurse Midwife with OB/GYN of Evangelical and the staff of The Family Place. Luke is the first grandchild for both sides of the family. Matt, Lisa, and baby Luke were presented with a special New Year's baby basket filled with gifts by The Standard-Journal newspaper, Evangelical and other local advertisers and vendors. The basket included baby essentials and gift certificates to get him off to a good start.

Chamber Blood Drive



At the Central PA Chamber of Commerce's most recent blood drive on Dec. 23, a total of 19 units of blood were collected from donors. Pictured is one of the donors, Tom Schulz of Yogi at Shangri-La, giving a thumbs up! The next blood drive at the Central PA Chamber will be on Friday, March 6. See page 7 for information on how to register. The need for blood is high, and in a short amount of time, you can help save as many as three lives with your donation!

Do you like discounts on products and services?

Visit
www.centralpachamber.com
 and click on
"Member-to-Member Discounts" under the
"Membership" tab.

Want to offer a discount to fellow Central PA Chamber members?
E-mail jshaffer@centralpachamber.com.

Ribbon Cuttings



It's official! Evangelical Community Hospital, Geisinger, the Greater Susquehanna Valley YMCA and The Miller Center held a ribbon cutting ceremony in December announcing the official start of their joint venture, aimed to improve health and wellness across the region! A larger, public celebration will take place sometime this year, according to organizers. Cutting the ribbon is Bonnie McDowell, CEO of the Greater Susquehanna Valley YMCA, the organization that will be running operations at the Lewisburg YMCA at the Miller Center. She is joined by, from left: Sue Greene, Chair of the Greater Susquehanna Valley Chamber of Commerce Board of Directors; Jim Mathias, representing The Miller Center for Recreation and Wellness; Tea Jay Aikey, President & CEO of the Central PA Chamber of Commerce; McDowell; Matthew M. Walsh, Executive VP, COO Clinical Enterprise at Geisinger; and Kendra Aucker, President and CEO of Evangelical Community Hospital. Learn more about the Lewisburg YMCA at the Miller Center at www.millercenterlewisburg.com. Find more pictures from the ribbon cutting on the Central PA Chamber's Facebook page!

Congratulations to the Milton Public Library, which capped its recent renovations of the Carriage House with a ribbon cutting ceremony on Jan. 21. Officials say the building next to the library will be able to host a variety of events in the future. Renovations were completed by T-Ross Brothers Construction. With the help of donors, matching grant funding was secured through the USDA. The Carriage House will be available to rent. The first floor can hold close to 50 people. Preparing to cut the ribbon is Jed Stalker, Director of The Milton Public Library. From left, are: Tea Jay Aikey, Central PA Chamber President & CEO; Rachel Yoder, Amy DeHart and Elaine Pfeil, library board members; state Sen. John Gordner; Joe Moralez, board vice president; Congressman Fred Keller; Rob Jones, board president; Stalker; Steve Weikel, foreman for T-Ross Brothers Construction; Michelle Musser, USDA; Barrett Cortright, carpenter for T-Ross Brothers; Borough of Milton Mayor Ed Nelson; and Bob Garrett, Greater Susquehanna Valley President & CEO. Learn more about the library at www.miltonpalibrary.org. Find more pictures from the ribbon cutting on the Central PA Chamber's Facebook page!



Evangelical Gala a 'Midsummer Night's Dream'

LEWISBURG—The 2020 Evangelical Gala will be held on Saturday, March 7 at Bucknell University's Elaine Langone Center.

The gala begins with a 6 p.m. beer and wine cocktail hour and a silent auction, followed by dinner and dancing to music provided by Body & Soul, out of Albany, N.Y. The eight-piece high energy party band specializes in Top 40, Rock, R&B and Motown party tunes.

Proceeds from this year's Gala, including ticket sales, auction, sponsorships, and donations will support the Enhancing the Evangelical Experience campaign. The campaign includes growing the Hospital through its valuable efforts including the Thyra M. Humphreys Center for Breast Health, Hospice of Evangelical, The Family Place, Community Health and Wellness, and direct charity care. A portion of the funds will also

serve to fund the Hospital's most ambitious building project in its history – PRIME (Patient Room Improvement, Modernization, and Enhancement).

Tickets are \$150 per person and are now on sale. The menu for the evening includes a choice of braised beef short rib with cherry reduction; pan seared trout with tomato, artichoke, and olive pan sauce; or quinoa stuffed eggplant rollatini with red wine tomato sauce and wilted greens. A delectable table of desserts top off the meal.

The silent auction will be powered by OneCause, creator of the mobile bidding system BidPal, again this year. Guests are encouraged to bring their smartphones to bid on fantastic items including trips, memorabilia and fun dining experiences. Two of this year's featured items include a four-night stay in a South Bethany, Del., beach

home and an Italian dinner for six prepared in the winner's home by Isabella Restaurant's Domenico Napoli.

Auction items will be added as they become available prior to the event and everyone, attendees and non-attendees alike, are invited to browse and bid using the online system. Pregala, community members are invited to take part in a London getaway raffle. Tickets for this four-night stay for two at an upscale London hotel are on sale now for \$50 each and can be purchased from a gala committee member or by calling 570-522-4850. Only 250 tickets are being sold for a chance to win this prize, which will be announced at the event and the winner need not be present to win.

For more information, call 522-4850 and visit www.evanhospital.com/gala.

INSIDE JOBS



Central PA Chamber staff and members had a fun afternoon on Jan. 7 touring Hoopla's Xtreme in Shamokin Dam, learning about the fun and relaxing activities they have for kids of all ages and adults! At left is Becky Smith, co-owner, talking about the many ways people spend their time at Hoopla's Xtreme. Next to her, from left, are: Brandy Margel, PA CareerLink; Ginny Forbes, Jersey Shore State Bank; Ron Mackley, iHeartMedia - Williamsport/Shamokin; Michael Porter, Central PA Chamber Education Coordinator; and Tea Jay Aikey, Central PA Chamber President & CEO. Learn more at www.hooplas.com. Find more pictures on the Central PA Chamber Facebook page!



Central PA Chamber staff and members spent a part of the morning on Jan. 16 at MaxWorx (A division of Hope Enterprises, Inc.) for the latest Inside Jobs Tour. MaxWorx is a service-based company that provides quality products by utilizing an integrated workforce. MaxWorx strives to be an employee-centric company, focusing on employee welfare, by hiring and accommodating their abilities to provide a truly equal opportunity environment. Their goal is to enhance the lives of people with disabilities while continuing to provide long term employment opportunities. Interested in having your business work with MaxWorx? Call 272-202-4435. On the tour, from left: Jeff Shaffer, Central PA Chamber Communication Director; Jessica Williams, Central PA Chamber Finance & Membership Director; Jason Smith, Director of MaxWorx; Tina Beach, Production Manager of MaxWorx; Jack Emery, Susquehanna Community Bank; and Tea Jay Aikey, Central PA Chamber President & CEO.

Donations accepted in memory of 'Cat Mayor'

MIFFLINBURG - Arthur's Pet Pantry, a local non-profit named after a neighborhood cat that would make his way around the Borough of Mifflinburg almost a decade ago, is seeking donations to continue its mission of providing supplemental pet food to owners' pets who might otherwise not be able to afford it, helping pets stay in their homes as opposed to winding up at a shelter.

Food donation boxes can be found in several local communities, including: West End Library, Laureilton; VetIQ Petcare, BZ Motors and Silvermoon Flea Market (in the door by the restaurant), Lewisburg; Hometown Eatery, OIP, The Tac Room, Airy Acres Soy Scents, Mifflinburg; Tropicana Tan-A-Rama, YMCA and Rebecca O'Outlet, Milton; Creative Styles by Tiffany, New Berlin; Furry Friends Animal Hospital and W&L Subaru, Northumberland; Companion Animal Hospital, Sunbury Motor's Kia, Selinsgrove; Sunbury Animal House, Beiter's Sunbury Market House, Sunbury; Rene's Barber Shop, Susquehanna Trail Animal Hospital, Watson-town.

There are two distribution sites, currently, including: at Mazeppa's Manna, 3200 Johnson Mill Road, Lewisburg, from 10 a.m. to noon on the third Wednesday of every month, and at Trinity United Methodist Church, 300 Sixth St., Northumberland, from 9 to 11 a.m. on the third Saturday or every month. Photo ID and proof of living in the Shikellamy School District is required.

You can learn more and the latest information on the Arthur's Pet Pantry Facebook page and at www.arthurspetpantry.wixsite.com/arthurspetpantry.

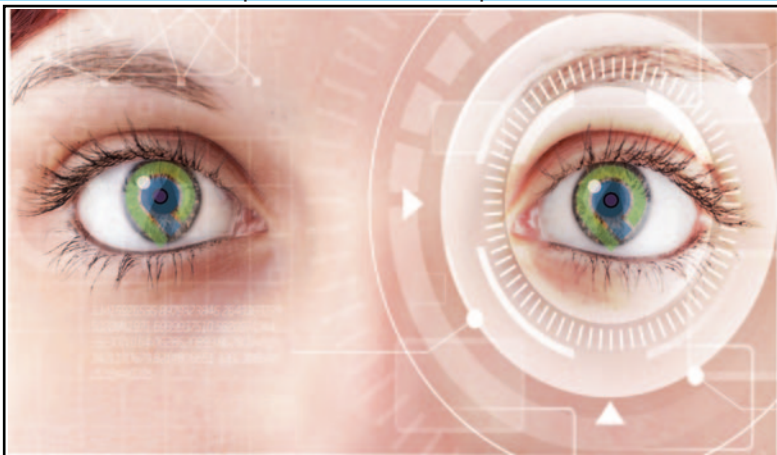
The non-profit also maintains a "wish list" on Amazon.

We are always in need of volunteers to help. It ranges from bagging the food for distribution, walking in a parade or attending an event and helping to sell merchandise. If interested, message the Facebook page. You may also e-mail arthurspetpantry@gmail.com or call 570-412-1500.

The pantry was founded in 2011 by Cindy McEvoy and in 2014, when McEvoy stepped down, it was taken over by Abigail Erdley. It is currently being run by her mother Sue Straub, family and friends.

At one time, an abandoned but personable cat showed up in Mifflinburg. Initially named "Crippled", he became a neighborhood cat. He became such a town character that he was dubbed Sir Arthur and became known as the "Cat Mayor of Mifflinburg." Arthur passed away in 2011.

McEvoy asked her friends what could they do to help pets before they wind up in the shelter system? The answer was to help families having financial difficulties to feed their pets. So, in 2011 the pet food bank was born.



Your Vision for

Let Pinpoint Show You the Way to Financial Success Throughout the New Year and Beyond!



Pinpoint
FEDERAL CREDIT UNION
Your Financial GPS.

Main Office
603 Center Street,
Milton, PA,
17847-2443

Lewisburg Office
at the McCann School of Business
7495 Westbranch Hwy,
Lewisburg, PA 17837

P: 570-742-3903 F: 570-742-0389

www.pinpointfcu.org

Business & Education

The ins and outs of business



In January, Building Leaders for the Susquehanna Valley (BLSV) students learned about the finer points of what it takes to become an entrepreneur. In groups, they formed fictitious businesses and will present their plans for marketing, management and more before 'sharks' in March. Thank you to the Central PA Chamber members and other professionals that assisted with this day! Above, Ray Haden of the Wilkes University Small Business Development Center presents the steps necessary to build a successful business plan to the BLSV students of District 2. At right, pictured from left, are: Darren Dershem, Lewisburg Area High School; Jordan Fetzer, owner of DogWatch of East Central PA and Brookpark Pet Supply; Jade Swartz and Alyssa Hoffman, Warrior Run High School. Jordan helped these students develop their business plan for their mock pet care business.



St. Patrick's Lottery Bingo

FRIDAY, MARCH 13

REGISTRATION
4:30 PM

GAMES START
6 PM

Pre-Sale Tickets \$25
At the Door \$30

Buy Tickets ahead of time at:
www.centralpachamber.com/events

Win your "pot-of-gold" and raise money for the Central PA Business & Education Association, providing career exploration and leadership training for area students!

D & S Event Center
5170 State Route 405
Milton, PA 17847

Work Ethic...It mattered then, and it matters now.

→ Attendance & Punctuality

Attitude & Effort

Respect

Be a School counts! Employer.



www.centralpachamber.com



Allen Norton, Workforce Development Executive with the Pennsylvania Chamber of Business and Industry, recently met with Michael Porter, Education Coordinator for the Central PA Chamber, to learn more about the various programs our Central PA Business & Education Association undertakes. If you're unfamiliar with 'B&E', visit www.centralpachamber.com and click on "Business & Education". You can also contact Porter at 570-742-7341 or mporter@centralpachamber.com.

Michael's Minutes

Moving fast in the new year!



The Central PA Business & Education Association is as busy as ever as we look beyond winter and into spring! We have been working heavily with the students of our Building Leaders for the Susquehanna Valley program to help them develop their small business plans to be presented later during our March meeting. (See photos on page 16.)

Looking into the spring, we are starting with a great fundraiser to help with all our programs for the year. Please, join us on March 13 for a St. Patrick's Day themed Lottery Bingo at D&S Event Center, Milton. (See flyer on page 16.) We need people to play the game, volunteer with the event and give monetary donations to help supply the lottery ticket prizes. All proceeds from this event will be used to promote our Business & Education Association programming.

In April, our Building Leaders for the Susquehanna Valley program will be having its graduation ceremonies. This year, we anticipate graduating more than 30 students from 12 different school districts! Applications for the following school year will be handed out shortly after graduation as we look forward to having a great impact on rising high school juniors. We will also be having a Wendy's Dine-to-Donate Fundraiser on April 27 to help support BLSV and many of our other programs.

On May 20, we will be having our annual Spring Career Awareness Fair at James F. Baugher Elementary School in Milton.

This event is a "touch-a-truck" career fair, so if you are in a career that has some pretty cool equipment (e.g. trucks, tractors, trailers), please, feel free to share these with our local 3rd, 4th and 5th grade students. If you don't have anything that would be "touch-a-truck" worthy, we still have plenty of careers to represent inside the school, too. The goal of this fair is to bring awareness to our students of the types of careers they can dream to achieve as they grow older.

Finally, on June 26, we will be having our largest fundraisers of the year - our Business & Education Golf Tournament and Golf Ball Drop! held at Bucknell Golf Club, Lewisburg. Please, consider sponsoring, playing in a team, and/or volunteering your time to help us to achieve another successful year for this event and our Business & Education Association.

Anyone who would like to know more on how to get involved in our programs, donate their time, or provide funding for our programs and students, please, don't hesitate to reach out to me.

Michael Porter
Education Coordinator
mporter@centralpachamber.com

CENTRAL PA BUSINESS & EDUCATION ASSOCIATION Seminar & Training Series

Food Safety is Everybody's Business (Non-Profit Training)

9 to 11 a.m. Friday, Feb. 7 @

Central PA Chamber of Commerce, 30 Lawton Lane, Milton

Cost: **NO FEE**

Register: www.centralpachamber.com/events

Presented by:



pennsylvania
DEPARTMENT OF AGRICULTURE

CENTRAL PA BUSINESS & EDUCATION ASSOCIATION Seminar & Training Series

LinkedIn: What Your Profile Says About You

9:30 to 11 a.m. Tuesday, Feb. 11 @

Central PA Chamber of Commerce, 30 Lawton Lane, Milton

Cost: **\$20 for Members/\$25 for Non-members**

Register: www.centralpachamber.com/events

Presented by:

**DIANE
WELLER**
COACHING
AWARENESS. CHOICE. CHANGE.



La Primavera Italiano Ristorante & Pizzeria

Fine Italian Cuisine

*Banquet Room Facilities
holds up to 160 people*

Titolari: Vito & Salvatore Mazzamuto
Rt. 45 west Lewisburg, PA Telephone: (570) 523-1515



Jessica's Jottings

Is everything correct?

Happy February to all Central PA Chamber members and readers of It's Your Business! We are getting ready for our Annual Meeting, which includes us celebrating 115 years of service! Make sure to register for this event and be sure to pick up a copy of the 2020 Directory, which showcases the history of the Central PA Chamber of Commerce.

Speaking of the directory, have you recently checked your member listing on our web site? These listings should be checked at least twice per year to ensure the correct information about your business is being seen and shared. Important items to check are business/organization name, phone number, address (mailing and physical) and primary contact. Visit www.centralpachamber.com to check your listing, and if changes need to be made be sure to contact me! After checking your listing, take the time to check any other places that have your information (e.g. google) to make sure your information is coming up correctly when people search. Nothing frustrates potential clients and customers more than not being able to find the correct contact information.

Next, after checking your digital listings, it is time to check the written items. These include business cards, brochures, flyers, etc. Check with your employees to see where all of these items are located and when was the last time they were updated or removed. Did you know here at the Central PA Chamber we have a hallway dedicated to our members' business cards and brochures? If not, you are missing out on a significant marketing opportunity as well as one of your major benefits. We have daily visitors at the Chamber that take information from this hallway. If you do not know if your items are here, please, feel free to contact me. I will let you know what we have or don't have. If you would like to place your items in the hallway, feel free to send them to me or stop by and drop them off. Don't let potential clients/customers walk away with outdated information!

Remember that these opportunities are part of the benefits of being a Central PA Chamber of Commerce member. As a preferred resource center, we want to make sure our members take advantage of the opportunities given to them so they may continue to succeed and grow. If you have any questions about these benefits, contact me.

I hope to see you at our Annual Meeting!



Jessica

Jessica Williams
Finance & Membership Director
jwilliams@centralpachamber.com

Supplies to soldiers

LOYALSOCK - Throughout October, Service 1st Federal Credit Union's Loyalsock Office collected supplies for the Deployed Soldiers Project.

The Deployed Soldiers Project supports deployed members of the military by sending them the essentials they need while serving. The donations collected through this initiative were accepted and distributed by members of the Blue Star Mothers Chapter 12.

Service 1st received many donations from members and the community, as well as a large donation of supplies from the American Legion Post 104 in Montoursville.

"The legion's donation to this project was overwhelming," said Mary Jo Martin, Assistant Vice President Williamsport Market, Service 1st. "The generosity of their members was greatly appreciated!"



Zartman Equipment Rental increased its crane fleet capacity with the purchase of a Grove GMK5250L, which has a capacity of up to 300 tons. This all-terrain crane features a 230-foot boom plus 69-foot jib. 'Our new crane will allow us to expand our offerings for our customers,' said Tim Clark, Vice President of Operations. 'This is the largest crane Zartman has ever owned, and we're very excited about the new opportunities it will bring.' Zartman's fleet of nine cranes ranges in capacity from 8.5 tons to 300 tons. This new crane has five outrigger positions, which allows for set up in tighter spaces. The crane also has the ability to move about a job-site while carrying the counterweights. It features up to a 50-degree jib offset, allowing for greater ability to reach over obstacles.

*Comprehensive
Crime Victim
Services Center*

transitions

SAFER FAMILIES. SAFER COMMUNITIES.

24-Hour Crisis Hotline
800-850-7948

Stop & visit
anytime
between
7:30 - 9 a.m.
the first
Monday of
every month
@ 30 Lawton
Lane, Milton.



Have a cup of
coffee and
learn more
about the
benefits of
Central PA
Chamber
membership!

To register, visit www.centralpachamber.com/events

Breakfast Briefing



Pam Burns, Branch Manager of First National Bank in Lewisburg, talks about some of the services of the bank, including small business loans and identity theft protection tips, during the most recent Breakfast Briefing in January. Eg Sigl, VP and Commercial Banking Relationship Manager and Sam Ryder, VP and Business Banker, also presented. Thank you to our sponsor! The next Breakfast Briefing, sponsored by The Graphic Hive, is coming up on March 13. Registration is required. Visit www.centralpachamber.com/events to save your seat! Everyone at the event will have the opportunity to deliver a 28-second elevator speech. Not sure what to say? Turn to the back page.

Upcoming CNA classes

LEWISBURG - RiverWoods Senior Living Community is will be hosting some upcoming Certified Nursing Assistant (CNA) training classes. The trainings are a joint partnership with Harrisburg Area Community College (HACC).

The first set of classes will be held from Feb. 24 to March 20. A second set follows from March 30 to April 24.

Those interested in attending should register at www.hacc.edu or contact Joni Bilbay at Joni.Bilbay@albrightcare.org.

As of press time, RiverWoods had openings for CNA positions.



Susquehanna Community Bank donated \$1,000 to North Central Sight Services through the Educational Improvement Tax Credit (EITC) Program. At left, Krysia Ziegler, Community Banking Officer and Michael Loeh, Assistant Vice President/Commercial Relationship Manager of SCB, present the check to Brian Patchett, President/CEO and Amy Alexander, Director of Development at NCSS. For more than 60 years, North Central Sight Services has assisted individuals who are blind or visually impaired to maximize their quality of life. They have helped prevent vision loss through their educational programs and screenings for children and adults. SCB has been making several donations to local non-profits, including \$250 to the Ronald McDonald House of Danville and \$2,500 to the Milton Panter Education Foundation. With this particular donation, the Milton Middle School was able to purchase drone equipment and items to enhance their STEM curriculum.

faxingmailboxingstoringpacking
printingboxingfreightingcopying
direct-mailingdeliveringbrochuring
designingflyeringshredding
brochuringreceivingssupplying
storingpackingpostcarding

Every **ing** for small business.
 And, of course, shipping.

The UPS Store



Penn House Commons
 325 N 10th St, Ste 400
 Lewisburg, PA 17837

570.523.2611 Tel
store5918@theupsstore.com
theupsstore.com/5918

Copyright © 2019 The UPS Store, Inc. All rights reserved. 15630121719

CONNECT WITH US!



Internet • TV • Home Phone
 HDTV • DVR • On Demand • TV Everywhere

SERVICE ELECTRIC
 CABLEVISION

secv.com • 800.522.2389



Join Us at these Upcoming Events!

Legislative Breakfast

7:30 to 9 a.m. Friday, Feb. 21 @
Country Cupboard, Lewisburg

"The State of American Business and Where We Are Going"

Speaker: Ryan Gleason, Manager of Congressional
and Public Affairs U.S. Chamber of Commerce Great Lakes Regional Office

Admission: \$15 - Registration is Required

Premier Sponsor:

MILTON
SAVINGS BANK

See you soon!

2020 Annual Meeting

11:30 a.m. to 1:30 p.m.

Thursday, Feb. 27

@ The Silver Moon Banquet Hall, Lewisburg
(feat: Feast of Flavor Catering!)

Registration required @

www.centralpachamber.com/events

Celebrating 115 years of service!

Ribbon Cutting

Open house with refreshments from 4 to 6 p.m.
at their new Lewisburg Weis location!



FIRST
Commonwealth®
Time to be first.™

CENTRAL PA
CHAMBER OF COMMERCE

4 p.m. March 5 @ 7125 West Branch Highway, Lewisburg

CENTRAL PA BUSINESS & EDUCATION ASSOCIATION **Seminar & Training Series**

How to Deliver a Great Elevator Speech

9 to 11 a.m. Friday, March 6 @

Central PA Chamber of Commerce, 30 Lawton Lane, Milton

Cost: \$5 for Members/\$10 for Non-members

Register: www.centralpachamber.com/events

Presented by:

CENTRAL PA
CHAMBER OF COMMERCE

T-Ross Brothers
CONSTRUCTION INC.

First Impressions matter. From the facade to the front door, reception area to the breakroom, your building should be a reflection of your business. Considering a renovation or new space? Our Design-Build team is ready to take on your next project.

We don't just construct buildings. WE BUILD BUSINESSES.

Building for the Future

COMMERCIAL | INDUSTRIAL | DESIGN-BUILD |
CONSTRUCTION MANAGEMENT

www.trossbrothers.com | 570-524-6411



BEND-FAB
STANDING SEAM METAL ROOFING
A DIVISION OF T-ROSS BROTHERS CONSTRUCTION

Superior Quality. Unmatched Versatility. Rugged Durability.

www.bend-fab.com
570.522.0042

CENTRAL PA

CHAMBER OF COMMERCE

ANNUAL MEETING

11:30 a.m. to 1:30 p.m. Thursday, Feb. 27
w/Feast of Flavor Catering @
The Silver Moon Banquet Hall, Lewisburg

Diane Weller

FEATURED SPEAKER



Diane Weller is the Founder & Principal of Diane Weller Coaching, a coaching and boutique writing services practice. Diane's approach is focused sharply on individuality, strengths and performance to produce life-changing results for the client and cause beneficial impact on their families and workplaces. As a contributing writer for Pink Ribbon Stories: A Celebration of Life (Miller), Diane discovered her innate power to listen, establish trust and draw out the private thoughts of breast cancer survivors and care givers about the difficult experiences they endured. This inspired her career transition into coaching and writing. Prior to launching her practice, Diane worked over 30 years in the areas of technology and people development for both profit and not-for-profit organizations.

Multiple food stations, including:

Pasta Station w/Chicken
Broiled Salmon w/Rice Pilaf
Gyro Station
Soup & Salad Bar
Desserts
Non-Alcoholic Beverages

\$33 PER PERSON

Meal/Venue Sponsor



Centerpiece Sponsor

Evangelical Community Hospital



REGISTRATION REQUIRED @ WWW.CENTRALPACHAMBER.COM/EVENTS