

2008 DEMOGRAPHIC PROFILE

Union County

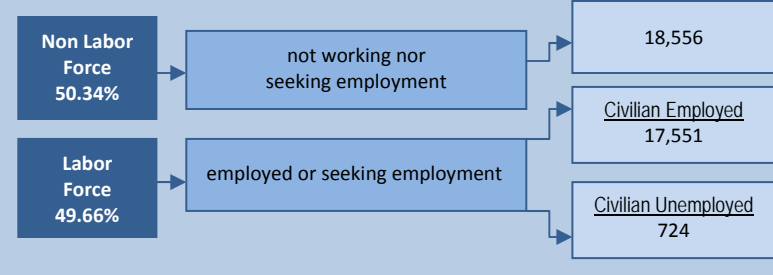
Population: 43,868

Median Age: 37

Average Household Income: \$61,414

Per Capita Income: \$22,676

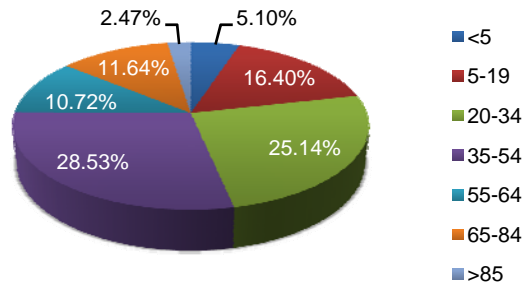
Population Age 16+



Educational Attainment

Population 25+	30,425
Less than 9th Grade	6.27%
9th to 12th No Diploma	19.63%
High School Graduate	39.46%
Some College, No Degree	12.00%
Associate Degree	4.29%
Bachelor's Degree	10.48%
Graduate or Professional Degree	7.87%
% High School Graduate +	74.11%
% Bachelor's Degree +	18.35%

Population by Age



Top Migratory Counties

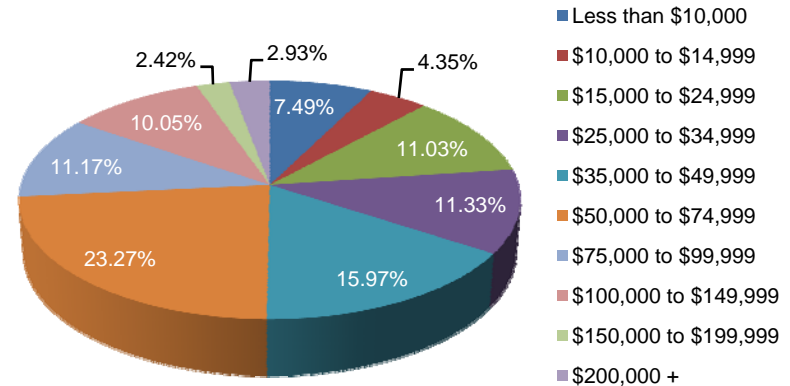
	In-Migration	Out-Migration
Northumberland, PA	514	Northumberland, PA 427
Snyder, PA	189	Snyder, PA 237
Lycoming, PA	109	Lycoming, PA 105
Lancaster, PA	33	Montour, PA 30
Dauphin, PA	32	Columbia, PA 29
Total for county	1,685	Total for county 1,572

Source: Economic Modeling Specialists, Inc., March 2009, for the 2006 time period, based on data from the Internal Revenue Service

Race and Ethnicity

American Indian or Alaska Native Population	0.16%
Asian Population	1.11%
Black Population	6.94%
Hawaiian or Pacific Islander Population	0.07%
Multi-race Population	1.44%
Other Race Population	0.38%
White Population	89.91%
Hispanic Population	4.61%
Non Hispanic Population	95.39%

Household Income



Central Pennsylvania Workforce Development Corp.
 1610 Industrial Boulevard, Suite 500 A
 Lewisburg, PA 17837
 570.522.0600 (P)
 570.522.0805 (F)